



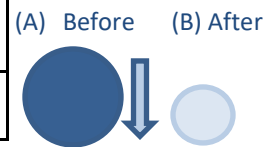
#### INTENDED USE

Richmond Dental and Medical's Soft BiteBlock™ is used to help protect the airway device (endotracheal tube or laryngeal mask airway), teeth, and tongue from being bitten when patients emerge from anesthesia. The Soft BiteBlock™ is provided non-sterile and in bulk size large, item no. 260000.

#### INSTRUCTIONS FOR USE

- Wash your hands and use approved medical gloves
- Assess patient's oral capacity and condition to ensure it is compatible with the Soft BiteBlock™
- Carefully, place the Soft BiteBlock™ between the back molars with the tongue medial
- Make sure the Soft BiteBlock™ protrudes outside the mouth and is visible
- Check to ensure the Soft BiteBlock™ is not pressed against the soft tissue, tonsils, or roof of the mouth to cause injury
- Recheck location of Soft BiteBlock™ frequently during use
- Extract Soft BiteBlock™ when no longer needed
- For single patient use only

Item #	(A) Soft BiteBlock™ Size (Before compression testing)	Bulk Packaging	Wet* (B) Compressed Dia. (mm)	Dry** (B) Compressed Dia. (mm)
260000	Large: 4" (101.6 mm) x 3/4" (19.05 mm)	10/band; 12 bands per box	5	7



\*Wet Compression testing was done on water saturated samples at 600 Newton's/135 pounds' force pressure

\*\*Dry Compression testing at 600 Newton's/135 pounds' force pressure

#### WARNING AND PRECAUTIONS

This device should only be used by CRNAs, Anesthesiology Technicians, Anesthesiologists, and other persons having adequate training and familiarity with intubation techniques.

When placing the Soft BiteBlock™ into the patient's mouth, care should be exercised to avoid placing fingers between the bite block and patient's teeth.

The Soft BiteBlock™ is not designed to be reprocessed or reused, and therefore cannot verify that reprocessing can clean and/or sterilize or maintain the structural integrity of the device to ensure patient safety.

#### PRODUCT DISPOSAL

After use, this product may be a potential biohazard. Handle and dispose of in accordance with accepted medical practice and applicable local, state, and federal laws and regulations.

