



# Silhouette™

LOW PROFILE NASAL MASK

Patent Pending

**Change your view of nitrous oxide.**



[www.porterinstrument.com/silhouette](http://www.porterinstrument.com/silhouette)

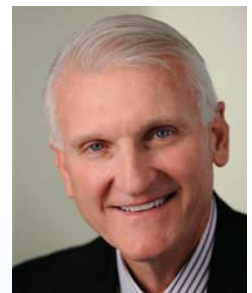
**PORTER**  
*The Trusted Name In Nitrous*



*SILHOUETTE Low Profile Nitrous Oxide Mask*

## Designed By A Dentist To Make Nitrous Oxide Easier To Use

SILHOUETTE is the brainchild of Robert Guyette, D.M.D., M.D., an Oral and Maxillofacial Surgeon in Phoenix, AZ. Dr. Guyette recognized that the available nitrous oxide masks made it difficult to access the oral cavity during dental procedures and were oftentimes uncomfortable for his patients. His extensive research led to an ingenious solution; an anatomic, low profile, lightweight mask that fits comfortably over the patient's nose providing excellent access to all areas of the patient's mouth.



*Dr. Robert Guyette,  
M.D., D.M.D.*

## Description

SILHOUETTE is a single patient use nasal mask and breathing circuit designed with lightweight tubing and a comfortable and conforming mask.

## Features And Benefits

SILHOUETTE's unique design offers many advantages over traditional nasal hoods, including:

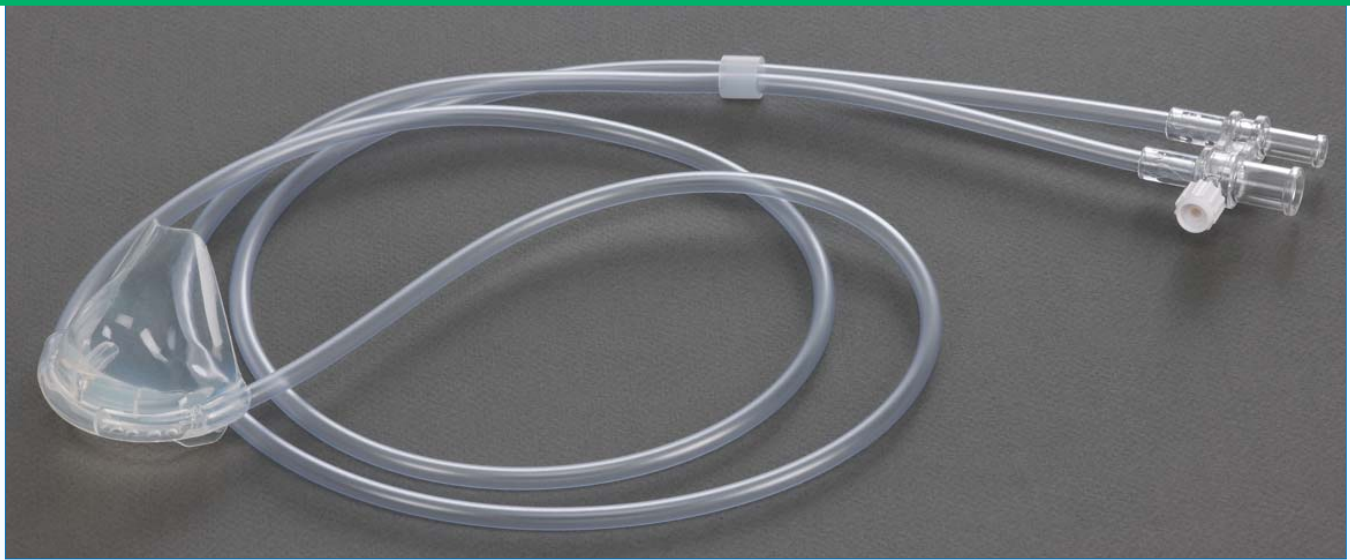
- Unobstructed access to the oral cavity
- A more predictable nitrous experience
- Enhanced scavenging efficiency for reduced N<sub>2</sub>O exposure
- Adhesive strip secures mask in place
- Disposable mask/circuit for improved infection control
- Four sizes for a perfect fit on all patients
- Easily retrofits to most flowmeters



*Traditional nasal mask*



*SILHOUETTE nasal mask*



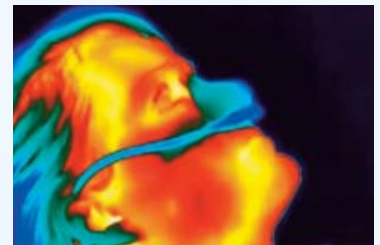
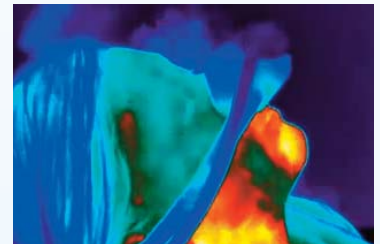
*SILHOUETTE Single Patient Use Nasal Mask and Breathing Circuit*

## A Comfortable Fit For All Patients



*The Silhouette mask is available in 4 sizes: Peds, Adult Small, Medium and Large resulting in a perfect fit for all of your patients.*

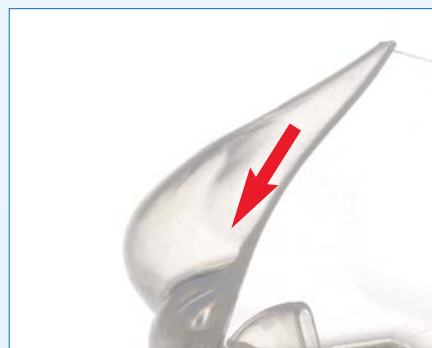
## Scavenging Efficiency



*Visit Porter's website to view infrared imaging videos demonstrating scavenging efficiency.*



*Adhesive strip secures mask in place.*



*Specially engineered nasal cannula for patient comfort and effective N2O delivery.*



*Capnography Luer Lock on every circuit for convenient sample line connection.*

**VISIT OUR WEBSITE FOR INFORMATION ON HOW TO ORDER, VIDEOS, PHOTOS AND FAQs.**  
**[WWW.PORTERINSTRUMENT.COM/SILHOUETTE](http://WWW.PORTERINSTRUMENT.COM/SILHOUETTE)**



## How To Get Started

It's quick and easy to start using SILHOUETTE nitrous oxide nasal masks in your dental practice. SILHOUETTE can easily be retrofitted to any ADA accepted flowmeter.

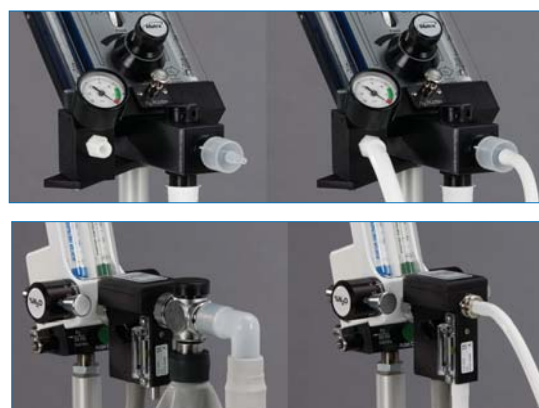
*SILHOUETTE is only available through authorized Porter dental dealers.*

## SILHOUETTE PART NUMBERS

PART	DESCRIPTION
SIL-CONN-KIT	Flowmeter Connection Kit ( <b>order one for each flowmeter</b> ) Includes: Cannula Adapter Breathing Bag Cap, 6.5' Fresh Gas / Vacuum Tubing, 4 Color Coded Sizer Masks, and Clip
SIL-VAR-4X3	Variety 12 Pack: 3 Silhouette Masks of each size - Pediatric, Adult Small, Medium, Large
SIL-PEDO-12	Pediatric 12 Pack: 12 Pediatric Silhouette Masks
SIL-SM-12	Adult Small 12 Pack: 12 Adult Small Silhouette Masks
SIL-MED-12	Medium 12 Pack: 12 Medium Silhouette Masks
SIL-LG-12	Large 12 Pack: 12 Large Silhouette Masks
SIL-START-PK	Silhouette Starter Pack: 3 Masks (one each: Pediatric, Adult Small, and Medium), Cannula Adapter, Breathing Bag Cap, and 6.5' Fresh Gas / Vacuum Tubing
SILSTARTPKPD	Silhouette Pedito Starter Pack: 3 Circuits (2 Pediatric, 1 Small), Cannula Adapter, Breathing Bag Cap, and 6.5' Fresh Gas / Vacuum Tubing
SIL-SIZERS-4	Silhouette Sizer Masks - Color Coded - 1 For Each Size



*SILHOUETTE Color Coded Sizer Masks*



*Easily retrofit your flowmeter's inefficient breathing circuit and nasal hood with SILHOUETTE.*

## Contact Porter Instrument For More Information or Assistance:

Phone: 215-723-4000 Email: [Dental@parker.com](mailto:Dental@parker.com)



[www.porterinstrument.com/silhouette](http://www.porterinstrument.com/silhouette)