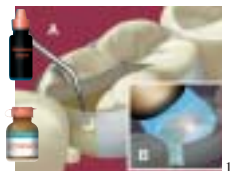


Vitrebond™ Light Cure Glass Ionomer Liner/Base Adper™ Adhesive Systems Filtek™ Z250 Universal Restorative Sof-Lex™ Discs, Strips and Finishing Brush

Prepare tooth and isolate.

Apply liner/base if desired:

- Mix a level scoop of Vitrebond powder and a drop of Vitrebond liquid on a mixing pad.
- Apply a thin layer of the liner/base to dentin surfaces using a ball applicator.
- Light-cure for 30 seconds.



Adhesive Placement:

- Apply adhesive following directions for 3M™ ESPE™ Adper™ adhesive of choice.



Place Restorative:

- Place Filtek Z250 Restorative in increments.
- Light-cure each increment. (Reference Light-Cure chart for thickness and cure time.)



Finish and Polish:

- Finish occlusal surface using a Sof-Lex Finishing Brush.
- Finish proximal surfaces with Sof-Lex Extra Thin Discs and Strips.



Vitrebond™ Light Cure Glass Ionomer Liner/Base
Adper™ Adhesive Systems
Filtek™ Z250 Universal Restorative
Sof-Lex™ Discs, Strips and Finishing Brush



Check occlusion:

- Check lateral and centric occlusion.
- Adjust if necessary.