



MORE INVENTIVE LESS INVASIVE

IT'S TIME FOR

 **ACTEON**

MINIMALLY
INVASIVE
SOLUTIONS

2019 Product Catalog

US & Canada

UPDATED 8/1/19

 **ACTEON**
North America



TABLE OF CONTENTS

ACTEON IMAGING

| | |
|---------------------------|----|
| Intraoral Radiology | 4 |
| Extraoral Radiology | 14 |
| Intraoral Cameras | 22 |

ACTEON EQUIPMENT

| | |
|---------------------|----|
| Ultrasonics | 26 |
| Air Polisher | 45 |
| Surgery | 50 |
| Curing Lights | 66 |

ACTEON PHARMA

| | |
|--|----|
| Gingival Retraction | 69 |
| Hemostasis & Tissue Regeneration | 70 |
| Hygiene | 71 |

ACTEON INTEGRATED

| | |
|-------------------------|----|
| Ultrasonics | 72 |
| Curing Lights | 77 |
| Intraoral Cameras | 79 |

INTRAORAL RADIOLOGY

Wall-mounted units

X-MINDTM

unity

X-MINDTM UNITY

X-MINDTM Unity is pre-wired for the integration of the SOPIX² digital sensor. Delivered with a long cone in standard version.

X-MINDTM UNITY - MOBILE STAND W0800140

X-MIND Unity Mobile Stand (XMU NOT INCLUDED)

X-MINDTM UNITY - TOP MOUNTING

XMU TOP 40 SHORT CONE

HXMU-TS

DC Tube Head, Scissor Arm, Timer, 2 Stud Wall Mount, Short Cone, Top Mount Extender Arm - 16"

XMU TOP 80 SHORT CONE

HXMU-TM

DC Tube Head, Scissor Arm, Timer, 2 Stud Wall Mount, Short Cone, Top Mount Extender Arm - 31"

XMU TOP 110 SHORT CONE

HXMU-TL

DC Tube Head, Scissor Arm, Timer, 2 Stud Wall Mount, Short Cone, Top Mount Extender Arm - 43"



X-MIND™ UNITY - BOTTOM MOUNTING

XMU BOTT 40 SHORT CONE

HXMU-BS

DC Tube Head, Scissor Arm, Timer, 2 Stud Wall Mount, Short Cone, Bottom Mount
Extender Arm - 16"

XMU BOTT 80 SHORT CONE

HXMU-BM

DC Tube Head, Scissor Arm, Timer, 2 Stud Wall Mount, Short Cone, Bottom Mount
Extender Arm - 31"

XMU BOTT 110 SHORT CONE

HXMU-BL

DC Tube Head, Scissor Arm, Timer, 2 Stud Wall Mount, Short Cone, Bottom Mount
Extender Arm - 43"

Digital X-ray Systems to integrate into X-MIND™ Unity

CMOS sensor with optic fiber of 1.5 million of pixels (size 1) or 2.21 millions of pixels (size 2), theoretical resolution of 25 pl/mm, actual resolution > 12 pl/mm, 3.70m cable. Includes ACE technology (Automatic Control Exposure).

Delivered with a sensor holder, 10 sensor sheaths, and SOPRO Imaging Software.

SOPIX® INSIDE SENSOR SIZE 1

S 802 6500

SOPIX (SIZE 1) DIGITAL SENSOR - DIRECT USB2

SOPIX® INSIDE SENSOR SIZE 2

S 802 6501

SOPIX (SIZE 2) DIGITAL SENSOR - DIRECT USB2



X-MIND UNITY ACCESSORIES



X-MIND™ Unity short cone
W0800018
SHORT CONE: 8" Ø60 (20cm)



X-MIND™ Unity long cone
W0800019
LONG CONE: 12" Ø60 (31cm)



X-MIND™ Unity short square cone
W0800020
Square SHORT CONE: 8" Ø60 (20cm)



X-MIND™ Unity remote exposure switch
W0800021
REMOTE EXPOSURE SWITCH



WALLPLATE for X-MIND™ Unity installation
SSWALLPLATE
Single Stud Wallplate



XMU EXTERNAL LIGHT 115V
W0800034

PSPIX²

PSPIX^{®2}

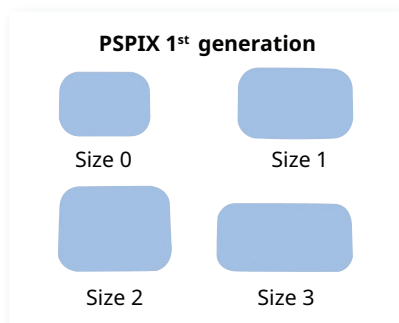
S 702 0011

Digital imaging plate system

Includes 4 imaging plates (2 x size 1, 2 x size 2), 200 bag & cover for imaging plate (100 x size 1, 100 x size 2), an imaging plate storage box, 1 stylus for touchscreen, 1 power supply 100-240 VAC, 1 Ethernet cable, SOPRO Imaging software and its license, and a Mac and its license.



STANDARD IMAGING PLATE



| | PSPIX² Set of 2 | PSPIX 1st generation Set of 2 |
|--------------------|-----------------------------------|---|
| Size 0 (22 x 35mm) | 990215 | 700178 |
| Size 1 (24 x 40mm) | 990216 | 700179 |
| Size 2 (31 x 41mm) | 990217 | 700180 |
| Size 3 (27 x 54mm) | 990218 | 700181 |

INTRAORAL RADIOLOGY

Accessories

IDOT™ IMAGING PLATE

Numbered plate for better identification.



Size 0

Size 1

Size 2

Size 3

| | PSPIX ² | PSPIX 1 st generation <u>set of 6</u> |
|--------------------|--------------------|--|
| Size 0 (22 x 35mm) | | 700182 |
| Size 1 (24 x 40mm) | | 700183 |
| Size 2 (31 x 41mm) | | 700184 |
| Size 3 (27 x 54mm) | | 700185 |

PROTECTIVE BAG FOR IMAGING PLATE



Size 0

Size 1

Size 2

Size 3

| | PSPIX ² <u>set of 250</u> | PSPIX 1 st generation <u>set of 250</u> |
|--------|---|---|
| Size 0 | 700342L | 700342L |
| Size 1 | 700343L | 700343L |
| Size 2 | 700344L | 700344L |
| Size 3 | 700345L | 700345L |

BAG & COVER FOR IMAGING PLATE with integrated cardboard envelope



| | PSPIX² set of 300 | PSPIX 1st generation set of 250 |
|--------|-----------------------------|--|
| Size 0 | 700546 | 700338L |
| Size 1 | 700547 | 700339L |
| Size 2 | 700548 | 700340L |
| Size 3 | 700549 | 700341L |

PSPIX² ACCESSORIES



Bag & cover for imaging plate start up kit
700550
(set of 100 pieces of size 1 and 100 pieces of size 2)



Imaging plate storage box
990219
(delivered without imaging plates)



Stylus for PSPIX² touchscreen
005132



Cleaning plate for PSPIX²
990243

INTRAORAL RADIOLOGY

Accessories



Autoclavable Insertion Guide

608019

Autoclavable insertion guide (Top) for imaging plates

Autoclavable Receptacle

608018

Autoclavable receptacle (Bottom) for imaging plates



Size 4 kit for PSPIX²

990250

1 plastic SUPPORT size 4, 100 protective bags size 4, 3 imaging plates size 3, 1 quick set-up, 1 quick start

Plastic Support Size 4

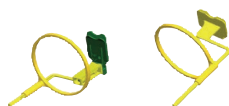
990251

Plastic case for 3 size 3 plates

BAGS&COVERS S4 - 100

700644

Bag and cover for imaging plates size 4 (set of 100)



PSPIX Positioning Set - Bitewing

700195

Includes five positioning holders with ring for bitewing and one centring devices.



PSPIX Positioning Set - Anterior & Posterior

700196

Includes two positioning holders with ring for anterior teeth, two positioning holders with ring for posterior teeth and two centering devices.



SOPROTABS

700406

Adhesive foam tab
(500 pieces in a single pasteboard)



Imaging Plate Storage Box - Gen 1

700194

(delivered without imaging plates)



SOPIX²

CMOS sensor with optic fiber of 1.5 million of pixels (size 1) or 2.21 millions of pixels (size 2), theoretical resolution of 25 pl/mm, actual resolution > 18 pl/mm, 3.70m cable. Includes ACE technology (Automatic Control Exposure). Delivered with a sensor holder, 10 sensor sheaths, the ACTEON® Imaging Suite (AIS) software.

SOPIX^{®2} (SIZE 2) DIGITAL SENSOR

S 802 0005

SOPIX² Direct USB2 - comes w/ one sensor holder

SOPIX^{®2} (SIZE 1) DIGITAL SENSOR

S 802 0006

SOPIX² (SIZE 1) DIGITAL SENSOR - DIRECT USB2 - COMES W/ ONE SENSOR HOLDER

ACCESSORIES



Positioning set for SOPIX²/SOPIX series sensors 700042

SOPIX² Positioning Set (5 sets with positioning Ring for: BW, Ant, Post, Endo Ant, Endo Post)



Sopix²/ Sopix sensor holder 926039

Size 1 or Size 2



Sheaths for Sopix²/Sopix

(500 pieces in a single pasteboard)

for size 1 SOPIX² series sensors

403026

for size 2 SOPIX² series sensors

403027



SOPRO TABS

700406

Adhesive foam tab

(500 pieces in a single pasteboard)



Sensor Holder Combo Kit

ACT-459-1+2

Size 1&2 Combo kit - includes 1 Ring & rod system, 4 size 1 bite blocks, 4 size 2 bite blocks (1 each size Anterior, Posterior, Vertical and Horizontal Bitewings)

Sensor Holder Size 2 Kit

ACT-459-2

Size 2 kit - includes 1 Ring & rod system, 8 size 2 bite blocks (2 each: Anterior, Posterior, Vertical and Horizontal Bitewings)

Sensor Holder Size 1 Kit

ACT-459-1

Size 1 Kit (includes 1 Ring & rod system, 8 size 1 bite blocks: 2 each: Anterior, Posterior, Vertical and Horizontal Bitewings)

Sensor Holder Bite Blocks Size 2

ACT-462

16 pack of bite blocks size 2 (4 each: Anterior, Posterior, Vertical and Horizontal Bitewings)

Sensor Holder Bite Blocks Size 1

ACT-461

16 pack of bite blocks size 1 (4 each: Anterior, Posterior, Vertical and Horizontal Bitewings)

**Sensors, ring and rod not included*



3 pack of bite blocks size 1 Anterior ACT-001

3 pack of bite blocks size 2 Anterior ACT-049

**Sensors, ring and rod not included*



3 pack of bite blocks size 1 Posterior ACT-018

3 pack of bite blocks size 2 Posterior ACT-056

**Sensors, ring and rod not included*



3 pack of bite blocks size 1 Horizontal Bitewing ACT-025

3 pack of bite blocks size 2 Horizontal Bitewing ACT-063

3 pack of bite blocks size 1 Vertical Bitewing ACT-032

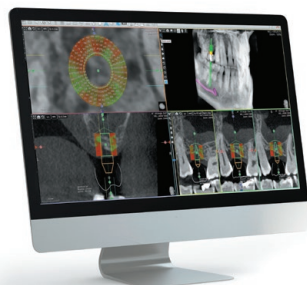
3 pack of bite blocks size 2 Vertical Bitewing ACT-070

**Sensors, ring and rod not included*

EXTRAORAL RADIOLOGY

X-MIND® Trium - Upgradeable 3 in 1

X MIND trium



3D imaging system

- Easily upgradeable
- Superior 3D image processing with SHARP and STAR
- Patented Ceph collimation
- Large selection of F.O.V : Ø40x40, 60x60, 80x80 and 110x80

14
ACTEON IMAGING

X-MIND™ TRIUM PAN

Control panel on the right
Control panel on the left

W0900001
W0900007



- OrthoPantomograph (OPG), 115-220 V, With One CMOS Pan 2D sensor for panoramic imaging
- Adult and Child Panoramic programs
 - Improved Orthogonality
 - TMJ section
 - Maxillary Sinus exam

ACTEON® Imaging Suite Software, for visualisation and analysis of 2D acquisitions.

Installation and user e-manuals, 2 years standard warranty.

Not included: Workstation PC and monitor, light.



X-MIND® Trium is a class 3R laser product per IEC 60825-1:2007. Avoid direct eye exposure to laser radiation. Viewing the laser output with magnifying optical instruments (for example, surgical microscope and binocular glasses) may pose an eye hazard and thus the user should not direct the beam into an area where such instruments are likely to be used.

EXTRAORAL RADIOLOGY

X-MIND® Trium - Upgradeable 3 in 1

X-MIND™ TRIUM PAN (CEPH READY) UPGRADES

X-MIND Trium Pan Ceph Ready Upgrade Ceph right (*no sensor included*)
X-MIND Trium Pan Ceph Ready Upgrade Ceph left (*no sensor included*)

W0900001
W0900007

X-MIND™ TRIUM PAN (3D READY)

Control panel on the right
Control panel on the left

W0900225
W0900226

UPGRADE 3D

X-MIND Trium Pan 3D Ready Upgrade 3D

W0900227

UPGRADES CEPH

X-MIND Trium Pan 3D Ready Upgrade Ceph right (*1 sensor Ceph 2D included*)
X-MIND Trium Pan 3D Ready Upgrade Ceph left (*1 sensor Ceph 2D included*)

W0900018
W0900019

*Specific restrictions apply for 11 x 8cm FOV in Ontario, Canada. Contact ACTEON North America for more information.



EXTRAORAL RADIOLOGY

X-MIND® Trium - Upgradeable 3 in 1



X-MIND™ TRIUM PAN CEPH

CEPH left (control panel on the right)
CEPH right (control panel on the left)
CEPH right (control panel on the right)
CEPH left (control panel on the left)

W0900003
W0900009
W0900230
W0900232



OrthoPantomograph (OPG), 115-220V, with one CMOS Ceph 2D sensor used for panoramic imaging and cephalometry.

- Adult and Child Panoramic programs
- Improved Orthogonality
- TMJ section
- Maxillary Sinus exam
- Cephalometric exam

ACTEON® Imaging Suite (AIS) Software, for visualisation and analysis of 2D acquisitions. Installation and user e-manuals, 2 years standard warranty.

Not included: Workstation PC and monitor, light.

EXTRAORAL RADIOLOGY

X-MIND® Trium - Upgradeable 3 in 1



X-MIND™ TRIUM PAN 3D

Control panel on the right

W0900004

Control panel on the left

W0900010

OrthoPantomograph (OPG), 115-220V, with one CMOS Ceph 2D sensor used for panoramic imaging and one Flat Panel Detector for CBCT.

- Adult and Child Panoramic programs
- Improved Orthogonality
- TMJ section
- Maxillary Sinus exam
- CBCT FOV Ø40x40, Ø60x60, Ø80x80, Ø110x80

Workstation PC with standard monitor.

Software preinstalled.

ACTEON® Imaging Suite (AIS) Software, for visualisation and analysis of 2D and 3D acquisitions and treatment planning. Includes five licenses for 3D app, the 3D viewer and implant planning application.

Installation and user e-manuals, 2 years standard warranty.

Not included: light.

UPGRADES

X-MIND™ Trium Pan 3D Upgrade Ceph right (1 2D Ceph sensor included)

W0900018

X-MIND™ Trium Pan 3D Upgrade Ceph left (1 2D Ceph sensor included)

W0900019

*Specific restrictions apply for 11 x 8cm FOV in Ontario, Canada. Contact ACTEON North America for more information.

EXTRAORAL RADIOLOGY

X-MIND® Trium - Upgradeable 3 in 1

X-MIND™ TRIUM PAN CEPH 3D



CEPH left (control panel on the right)
CEPH right (control panel on the left)
CEPH right (control panel on the right)
CEPH left (control panel on the left)

W0900006
W0900012
W0900231
W0900233

18
ACTEON IMAGING



OrthoPantomograph (OPG), 115-220V, with one CMOS Ceph 2D sensor used for panoramic imaging and cephalometry and one Flat Panel Detector for CBCT.

- Adult and Child Panoramic programs
- Improved Orthogonality
- TMJ section
- Maxillary Sinus exam
- Cephalometry exam
- CBCT FOV Ø40x40, Ø60x60, Ø80x80, Ø110x80

Workstation PC with standard monitor. Software preinstalled.

ACTEON® Imaging Suite (AIS) Software, for visualisation and analysis of 2D and 3D acquisitions and treatment planning. Includes five licenses for 3D app, the 3D viewer and implant planning application.

Installation and user e-manuals, 2 years standard warranty.

Not included: light.

*Specific restrictions apply for 11 x 8cm FOV in Ontario, Canada. Contact ACTEON North America for more information.



ACTEON® IMAGING SUITE

| | |
|--|-----------------|
| AIS 3D APP STANDARD 1 dongle license | W1000014 |
| AIS 3D APP BASIC 1 electronic license | W1000012 |
| AIS 3D APP BASIC 5 electronic licenses | W1000013 |
| AIS 3D APP STANDARD 5 dongle licenses | W1000015 |
| AIS 3D APP PREMIUM 1 dongle license | W1000016 |
| AIS 3D APP PREMIUM 5 dongle licenses | W1000017 |
| AIS DICOM PACKAGE license (DICOM print license NOT included) | W0900153 |
| DICOM print license | 39800751 |

ACCESSORIES

| | |
|-------------------------------------|------------------|
| Trium POWER CONDITIONER 8A, 120V | 61084-03R |
| Trium 2D ACQUISITION PC AND MONITOR | W0900246 |
| Trium 2D ACQUISITION PC USA | W0911246 |

EXTRAORAL RADIOLOGY

Accessories

Pan 2D sensor for OrthoPantomograph (OPG)
(to add a second 2D sensor or for replacement) **W0900036**

Ceph 2D sensor for OrthoPantomograph (OPG) and cephalometry
(for replacement) **W0900037**

3D sensor **W0900038**
Plan captor for 3D OrthoPantomograph (OPG) (for replacement)

115V Light **29701225.CW**
Reports X-Rays emission during acquisition

230V Light **29701226.CW**
Reports X-Rays emission during acquisition

PC workstation (no monitor) **W0900040**
Windows 7, 64 bits. Nvidia Graphic card.
Not included: network card, monitor, AIS 3D App

PC workstation with network card and dongle key (no monitor) **W0900042**
Windows 7, 64 bits. Nvidia Graphic card. 1 Gbit Ethernet Network card. 3D reconstruction
dongle. Not included: monitor, AIS 3D App.

24" PC Monitor **W0900141**

Remote trigger & 15m cable **W0900091**

Ears protections X-MIND Trium **W0900110**
only for arms Ceph

XMT CHIN REST, BITE BLOCK, TMJ **W0900080**

XMT SLIDING BITE BLOCKS (10pcs) **W0900080**

Bite protections X-MIND Trium (500 pcs) **W0900142**



X-MIND Trium Self Standing Base **W0900236**



X-MIND™ PRIME 2D PAN

XMP 2D WALL 110-120V
W1200002V

X-MIND® Prime is a smart space-saving solution, providing high-technology capabilities and simplicity of use. This ingenious unit offers all essential diagnostic tools in a cost effective package.

X-MIND® Prime offers a full set of panoramic exams tailored to meet all your clinical applications. It provides all the panoramic exams required for general dentistry: dental panoramic, temporomandibular joints, sinuses.

X-MIND™ PRIME 3D CBCT/PAN

XMP 3D WALL 110-120V + WS + MONITOR
+ 5 licenses for AIS 3D app
W1200006V

X-MIND® Prime is a complete imaging solution combining panoramic and 3D X-rays, from general examination to specific treatment planning.

X-MIND® Prime 3D offers a multitude of acquisition programs thanks to its multiple FOV (50x50mm, 85x50mm, and 85x93mm). Once you select the region of interest of the examination, the settings and dose are automatically adjusted.

X-MIND™ PRIME COLUMN

Column for X-MIND® Prime for when mounting to the wall is not possible
W1200101V

*X-MIND® Prime is currently unavailable in Canada



SOPROCARE

Patented SOPRO® innovation using fluorescence and selective chromatic amplification technologies.

SOPROCARE® instantly highlights plaque, gingival inflammation and caries even in their early stages.

- Light (78 g)
- 4 pre-set selections (extraoral, intraoral, CARE, macro)
- Lighting by LED : four white - three blue
- Freezing by sensitive touch "SOPROTouch®"



SOPROCARE® Handpiece

S 950 0002

Delivered with four SOPROTIPS, a handpiece holder, SOPRO Imaging software and its license. Needs to be used with a docking station.

SOPROLIFE

Patented SOPRO® innovation using fluorescence technologies.

SOPROLIFE® Detects caries on occlusal and interproximal surfaces, helping to achieve minimally invasive treatments.

- Light (78 g)
- 4 pre-set selections (extraoral, intraoral, LIFE, macro)
- Lighting by LED : 4 whites (Daylight mode) or 4 blues (diagnostic or traitement mode)
- Freezing by sensitive touch "SOPROTouch®"



SOPROLIFE® Handpiece

S 900 0002

Delivered with four SOPROTIPS, a SOPROLIFE® handpiece holder, SOPRO Imaging software and its license. Needs to be used with a docking station.

SOPRO 717

SOPRO 717 First reveals micro-cracks, micro-lesions, infiltrations – all that human vision can not see alone.

- Light (75 g)
- 3 pre-selections (extraoral, intraoral, macro)
- Lighting by LED (x8)
- Freezing by sensitive touch “SOPROTouch®”



SOPRO® 717 FIRST Handpiece

S 717 0101

Delivered with a SOPRO® 717 First handpiece holder, SOPRO Imaging software and its license. Needs to be used with a docking station.

SOPRO 617

- Very light (55 g)
- Freezing by sensitive touch “SOPROTouch®”
- No focus adjustment
- Lighting by LED (x8)
- Non-inverted image
- 105° angle of view



SOPRO® 617 Handpiece

S 617 0002

Delivered with a SOPRO® 617 handpiece holder, SOPRO Imaging software and its license. Needs to be used with a docking station

INTRAORAL CAMERAS

Docking Stations

DOCKING STATIONS



Mini dock USB 2.0
Docking station USB2.0

S 717 1600

Including one 2.5 meters linking cable and one 0.8 meter repeater cable

Dock M-USB-Light Grey **S 717 1036**
BUILT-IN DOCKING STATION WITH MEMORY: Features Analog and USB 2.0 Outputs for Dental Unit - LIGHT GREY colored tubing - One built-in docking station with Image Memory, one 21 foot linking cable with LIGHT GREY color tubing, one S-Video Cable, one Composite



Linking cable 8ft **922050**
With connector on both sides
SOPROLIFE®/SOPRO® 717/SOPRO® 617

Linking cable 15ft **922051**
With connector on both sides
SOPROLIFE®/SOPRO® 717/SOPRO® 617

FOOTSWITCHES



Foot Pedal for M-USB Dock

009002



USB Foot Pedal

009009

SHEATHS



Sheaths for SOPROLIFE®, SOPROCARE® or SOPRO® 717 First
500 sheaths per box

403017

Sheaths for SOPRO® 617
500 sheaths per box

403023

Sheaths for SOPRO® 595
500 sheaths per box

SOPRO HC5

HANDPIECE HOLDERS



Handpiece holder for SOPROLIFE®, SOPROCARE®, SOPRO® 717 First, SOPRO® 617 and SOPRO® 595
Only for unsheathed linking cables.

926063

ACCESSORIES



SOPROTIPS for SOPROLIFE® and SOPROCARE®
Protection tip against light.
Sterilization by autoclave.
(Set of 4 pieces)

990135

NEWTRON

BOOSTER



NEWTRON® BOOSTER

US F60216

CANADA F60206

NEWTRON unit delivered with NEWTRON Handpiece, US power Supply

NEWTRON® BOOSTER WITH INTRO TIP KIT

US F60211

CANADA F60201

NEWTRON unit delivered with NEWTRON Handpiece, intro kit (#1, 10Z, H3 tips, three color coded torque wrenches, autoclavable plastic box), and US power Supply

NEWTRON

P5 B. LED



NEWTRON® P5 B.LED

US F61116

CANADA F61106

NEWTRON P5 B.LED unit delivered with NEWTRON Slim B.LED Handpiece with white LED ring, US power Supply

NEWTRON® P5 B.LED WITH INTRO KIT

US F61117

CANADA F61107

NEWTRON P5 B.LED delivered with NEWTRON Slim B.LED Handpiece with white LED ring, intro kit (#1, 10Z, H3 tips, three color coded torque wrenches, autoclavable plastic box), and US power Supply

Class IIa medical devices (GMED) - CE 0459

NEWTRON

P5XS B. LED



28
ACTEON EQUIPMENT

NEWTRON® P5 XS B.LED

US F62118

CANADA F62106

NEWTRON P5 XS B.LED unit delivered with NEWTRON Slim B.LED Handpiece with white LED ring, intro kit, US power Supply

NEWTRON® P5 XS B.LED WITH INTRO KIT

US F62117

CANADA F62107

NEWTRON P5 XS B.LED delivered with NEWTRON Slim B.LED Handpiece with white LED ring, intro kit (#1, 10Z, H3 tips, three blue color coded torque wrenches, autoclavable plastic box), and US power Supply

Class IIa medical devices (GMED) - CE 0459

ACCESSORIES



NEWTRON® handpiece **F12281**
Autoclavable Handpiece: GII 2-Tone (Grey)
NEWTRON OEM



Nose for NEWTRON® handpiece **E12681**



NEWTRON® SLIM B.LED handpiece **F12900**
NEWTRON Slim B.LED Handpiece with blue LED ring; Compatible with NEWTRON B.LED and NEWTRON XS B.LED devices for use with FLAG fluorescent liquid assistance guide

*F.L.A.G. is currently unavailable in Canada



NEWTRON® SLIM B.LED handpiece **F12905**
NEWTRON Slim B.LED Handpiece with white LED ring for NEWTRON B.LED, XS B.LED



NEWTRON® SLIM handpiece **F12901**
without LED
For NEWTRON® Booster sold before 2016



Nose for NEWTRON® SLIM and NEWTRON® SLIM B.LED handpieces **E12904**



NEWTRON® SLIM B.LED blue LED ring **F62201**
Blue LED Ring for NEWTRON Slim B.LED handpiece (to illuminate FLAG - not available in Canada)



NEWTRON® SLIM B.LED white LED ring **F12915**
White LED Ring for NEWTRON Slim B.LED Handpiece

Light Guide **E12903**
LED Light Guide for NEWTRON Slim B.LED Handpiece

ULTRASONICS

Ultrasonic Accessories



300ml tank

F62004



500ml tank

F62005



F.L.A.G.™ for B.LED **F62209**

FLAG 5, 1.5 ML vials. Fluorescent liquid assistance guide adheres to plaque and is illuminated by the blue light of the NEWTRON Slim B.LED handpiece. Not available in Canada.

F.L.A.G.™ for B.LED **F62207**

FLAG 100 ML bottle. Fluorescent liquid assistance guide adheres to plaque and is illuminated by the blue light of the NEWTRON Slim B.LED handpiece. Not available in Canada.

F.L.A.G.™ Package **F62206**

FLAG Package 100 ML bottle with Blue LED ring. Fluorescent liquid assistance guide adheres to plaque and is illuminated by the blue light of the NEWTRON Slim B.LED.

*F.L.A.G. is currently unavailable in Canada



Large O-Ring for Handpiece

E15019

Small O-Ring for Handpiece

E15052

O-Ring Kit

E15121

for P Max XS and P5 NEWTRON XS Irrigation Tanks

Medium O-Ring

E15002

Black Medium O-ring 9 x 1 for NEWTRON Slim and NEWTRON Slim B.LED Handpiece

O-Ring with Tool

F12304

Handpiece 3 gasket O-rings and tool

Water Filter, Complete

F10386

Replacement water filter cartridge

F10389



NEWTRON® LED handpiece

F12609

Autoclavable LED Handpiece for P Max XS, P5 LED, P5 XS LED, SP NEWTRON LED and Piezotome 2 / Implant Center 2



Light Ring

F12605

For NEWTRON® LED handpiece

Light Guide

E12674

Light guide for the NEWTRON® LED Handpiece

WRENCHES

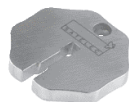


NEWTRON® wrench
Blue color coded torque wrench

F81322

IMPORTANT

The NEWTRON® wrench is used with surgical endodontics tips: AS3D, AS6D, AS9D, ASLD, ASRD, S12-70D, P14D, P15LD and P15RD. For other tips with yellow ring, the universal wrench (Ref. F00406) is recommended.



Universal wrench

F00406



Blue Plastic Color Coded Wrench

F81302



Orange Plastic Color Coded Wrench

F81303



Black Plastic Color Coded Wrench

F81305

BOXES

**Autoclavable plastic box (round)****F12351**

Clear Cover GII (Empty) Autoclavable Box - Holds four tips total - Requires round torque wrenches to hold the tips (not included)

**Autoclavable box****F12350**

Clear Cover GII (Empty) Autoclavable Box - Holds four tips total - Requires Satelec plastic wrenches to hold the tips (not included)

**Autoclavable box****F00143**

Metal Blue Autoclavable Box - Holds 6 tips (not included)

ULTRASONICS

Dental tips

scaling

Scaling



N°1
F00246
Universal



N°2
F00247
High power



N°3
F00248
Removing stains



10P
F00253
Supra and subgingival < 3mm



10X
F00359
Interproximal



10Z
F00254
Subgingival



N°1S
F00245
Supra and subgingival

periodontics

Curettes & debridement



H1
F00366
Anterior teeth, diamond-coated



H2L
F00367
Premolars & molars, left-angled



H2R
F00368
Premolars & molars, right-angled



H3
F00369
Anterior teeth, curette



H4L
F00114
Premolars & molars, left-angled



H4R
F00115
Premolars & molars, right-angled

perioFine

Periofine



PFU
F02170
Universal



PFL
F02171
Left-angled



PFR
F02172
Right-angled

implantProtect

Pure Titanium

Peri-implantitis treatment



IP1
F02121
Implant
abutments
and wide
threads



IP2L
F02122
Medium implant
threads,
left-angled



IP2R
F02123
Medium implant
threads,
right-angled



IP3L
F02124
Narrow implant threads,
left-angled



IP3R
F02125
Narrow implant threads,
right-angled

periomaintenance

BDR

Periodontal maintenance (BDR)



TK1-1S
F01001
Short probe



TK1-1L
F01004
Long probe



TK2-1L
F02162
Premolars & molars,
left-angled



TK2-1R
F02161
Premolars & molars,
right-angled

perioSoft

implant maintenance



PH1 (x4)
F00702
Anterior teeth



PH2L (x4)
F00705
Premolars &
molars,
left-angled



PH2R (x4)
F00706
Premolars &
molars,
right-angled

perioPrecision

PerioPrecision



P2L
F00090
Narrow pockets
debridement,
left-angled



P2R
F00091
Narrow pockets
debridement,
right-angled

ULTRASONICS

Dental tips

endodontics



Endodontics - Irrigation



K10-21 (x4)
F43710
Ø 0.1/length 21mm



K10-25 (x4)
F43712
Ø 0.1/length 25mm



K15-21 (x4)
F43715
Ø 0.15/length 21mm



K15-25 (x4)
F43717
Ø 0.15/length 25mm



K25-21 (x4)
F43725
Ø 0.25/length 21mm



K25-25 (x4)
F43727
Ø 0.25/length 25mm



K30-21 (x4)
F43730
Ø 0.3/length 21mm



K30-25 (x4)
F43732
Ø 0.3/length 25mm

irrisafe



Passive Ultrasonic Irrigation



IRR 20-21 (x4)
F43807
Ø 0.2mm
length 21mm



IRR 20-25 (x4)
F43808
Ø 0.2mm
length 25mm



IRR 25-21 (x4)
F43805
Ø 0.25mm
length 21mm



IRR 25-25 (x4)
F43806
Ø 0.25mm
length 25mm

endosurgery



Apical surgery



P14D
F00106
Universel



P15LD
F00107
Left-angled



P15RD
F00108
Right-angled



S12-70D
F00118
70°
Universal

endodontics



Retreatment



ET40
F88012
Length 40mm



ET40D
F88014
Length 40mm,
diamond-coated



ET20D
F88013
Length 20mm,
diamond-coated



SO4
F88009
Gutta Percha condenser

endosuccess

Retreatment



Retreatment



ET18D
F88017
Cavity access finishing



ETBD
F88020
Exploration



ET25S
F88021
Short Ti-Nb tip



ET25
F88018
Ti-Nb tip



ET25L
F88022
Long Ti-Nb tip

endosuccess

Apical Surgery



Apical surgery



AS3D
F00065
Length 3mm
Universal



AS6D
F00079
Length 6mm



AS9D
F00067
Length 9mm



ASLD
F00080
Length 3mm,
left-angled (premolars)



ASRD
F00081
Length 3mm,
right-angled (premolars)

endosuccess

Canal Access Prep



Canal Access Prep



CAP1
F88181
Cavity
preparation



CAP2
F88182
Canal
localization



CAP3
F88183
Canal opening

ULTRASONICS

Dental tips

perfectmargin Rounded



Prosthetic finishing (rounded)



PM1
F02250
Preparation of
the dentin



PM2
F02251
Preparation/
finishing



PM3
F02252
Finishing



PM4
F02253
Corono-radicular preparation, conical,
diamond-coated 46µm

perfectmargin Veneers



Ceramic veneers finishing



PMV1
F02021
Diamond-coated
ball



PMV2
F02022
Diamond-coated
external spoon



PMV3
F02023
Diamond-coated
internal spoon



PMV4
F02024
Smooth external
spoon



PMV5
F02025
Smooth internal
spoon



PMV6
F02026
Smooth ball

perfectmargin Shoulder



Prosthetic finishing (shoulder)



PMS1
F02254
Preparation of
the dentin



PMS2
F02255
Preparation/
finishing



PMS3
F02256
Finishing

ex**cavus**

Excavation



EX1

F02040

Occlusal surface



EX2

F02041

Proximal surface



EX3

F02042

Distal surface



EX-R

F02043

45° angled to the right



EX-L

F02044

45° angled to the left

Prosthesis



C20

F00113

Inlay/onlay condensation



5AE

F00249

Loosening with spray

ULTRASONICS

Tip kits



scaling

Scaling kit

F00900

Tips - #1, #2, 10X, 10Z with 4 torque Wrenches and Autoclavable Box

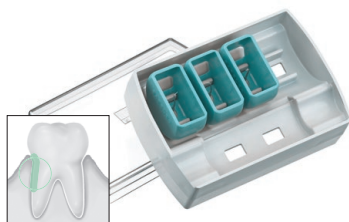


NEWTRON

NEWTRON Intro Kit

F00932

Tips - #1, 10Z, H3, three torque wrenches and Autoclavable Box



perioPrecision

Perio Precision kit

F00939

Tips - TK1- 1S, P2L, P2R, 3 Wrenches and Autoclavable Box



perioDontics

Perio kit

F00902

Tips - H3, H4L, H4R with 3 torque wrenches and



perio*maintenance*

BDR

Bio-Film Disruption Kit

F00904

Tips - TK1- 1S /TK1- 1L / TK2- 1R / TK2- 1L with 4 Wrenches and Autoclavable Box



implant*Protect*

Pure Titanium

Implant Protect kit

F02120

Tips - IP1, IP2L, IP2R, IP3L, IP3R with universal wrench and Autoclavable stand



perio*dontics*

Perio Soft Kit

F00906

Tips - 4 pk PH1, 4 pk PH2L, 4 pk PH2R with 3 Black Wrenches and Autoclavable Box. Only available until supplies last.



excavus

Excavus® kit

F00739

Tips - EX1, EX2, EX3, EXR, EXL with 1 Universal Wrench and Autoclavable Stand

ULTRASONICS

Tip kits



endosuccess
Retreatment

Endo Success™ Retreatment kit

F00737



ET18D, ETBD, ET20, ET25S, ET25 and ETPR with 1
Universal Wrench and Autoclavable Stand



endosuccess
Canal Access Prep

Endo Success™ Canal Access Prep kit

F88180



CAP1, CAP2, CAP3 with universal wrench and
Autoclavable stand



endosuccess
Apical Surgery

Endo Success™ Apical Surgery kit

F00069



AS3D, AS6D, AS9D, ASLD, ASRD Tips with 1 Universal
Wrench and Autoclavable Stand



Perfect Margin® Rounded kit

F00738

Tips - PM1, PM2, PM3, PM4 with 1 Universal Wrench and Autoclavable Stand



Perfect Margin® Shoulder kit

F00736

Tips - PMS1, PMS2, PMS3, PM4 with 1 Universal Wrench and Autoclavable Stand



Perfect Margin® Veneers kit

F02020

Tips - PMV1, PMV2, PMV3, PMV4, PMV5, PMV6 with universal wrench and Autoclavable stand

ULTRASONICS

Tip kits

44

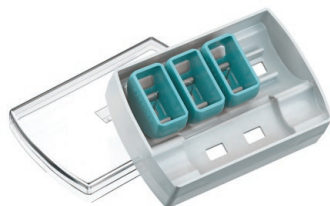
ACTEON EQUIPMENT



Retro Kit

F00910

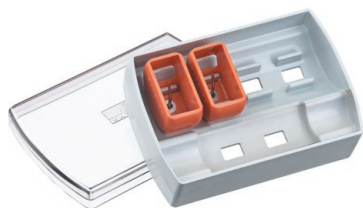
Tips - S12-70D, AS6D, ASLD, ASRD with 4 Wrenches and Autoclavable Box



Micro Retro Kit

F00912

Tips - P14D, P15LD, P15RD with 3 Wrenches and Autoclavable Box



Loosening Kit

F00914

Tips - 5AE with one Orange Wrench and Autoclavable Box



Box Reactor Kit

F00276

5AE tip with Universal Wrench and Reactor Handpiece

AIR N GO

EASY



45

ACTEON EQUIPMENT

AIR-N-GO® easy

The new generation of dual purpose Air Polisher: SUPRA and PERIO

| | |
|---------------------------------------|---------------|
| AIR-N-GO® easy with KaVo* adapter | F10130 |
| AIR-N-GO® easy with Sirona* adapter | F10131 |
| AIR-N-GO® easy with W&H* adapter | F10132 |
| AIR-N-GO® easy with Bien-Air* adapter | F10133 |
| AIR-N-GO® easy with Midwest* adapter | F10135 |

Delivered with a convertible AIR-N-GO® easy handpiece, a SUPRA nozzle, 1 intro kit of 20g bags of CLASSIC powders, 1 AIR-N-GO® easy maintenance kit (replacement o-rings, syringe of silicone grease with brushes, cannula, cleaning drill).

*KaVo, Sirona, W&H, Bien-Air and Midwest are registered trademarks.

Class IIa medical devices (GMED) - CE 0459



AIR-N-GO® EASY ACCESSORIES



AIR-N-GO® easy PERIO KIT

F10120

Turns your handpiece into a Perio system to treat periodontal disease (tooth & implants) on pockets from 3 to 8mm.

Delivered with a AIR-N-GO easy nozzle and a bottle of AIR-N-GO PERIO glycine powder.

Class IIa medical devices (GMED) - CE 0459



AIR-N-GO® SUPRA nozzle

F10125

For all prophylaxis supra-gingival treatments.



AIR-N-GO® PERIO easy nozzle

F10126

Turns your handpiece into a Perio system to treat non surgical periodontal disease (tooth & implants) in pockets from 3 to 8mm.



AIR-N-GO® PERIO nozzle

F10127

Turns your handpiece into a Perio system to treat non surgical and surgical periodontal disease (tooth & implants) in pockets from 8 to 10mm.



AIR-N-GO® PERIO Maintenance nozzle

F10128

Turns your handpiece into a system adapted for periodontal maintenance in pockets until 4mm.



Air-N-Go Easy O-ring kit

F10121

Air-N-Go Easy o-ring kit: includes silicone grease syringe, (3) brushes, o-rings

POWDER - BOTTLES

Class IIa medical devices (GMED) - CE 0459



AIR-N-GO® CLASSIC powder

4 bottles (250g)

Peppermint
Lemon
Raspberry
Cola
Neutral

F10250
F10251
F10252
F10253
F10254



4 flavors AIR-N-GO® CLASSIC powder

4 bottles (250g)

F10255



AIR-N-GO® PERIO powder

3 bottles (160g)

F10270

POWDER - STICKS

Class IIa medical devices (GMED) - CE 0459



AIR-N-GO® CLASSIC powder

50 sticks (20g)

Peppermint
Lemon
Raspberry
Cola
Neutral

F10256
F10257
F10258
F10259
F10260

AIR-N-GO® ADAPTERS



KaVo* Adapter

F10240



Sirona* Adapter

F10241



W&H* Adapter

F10242



Bien-Air* Adapter

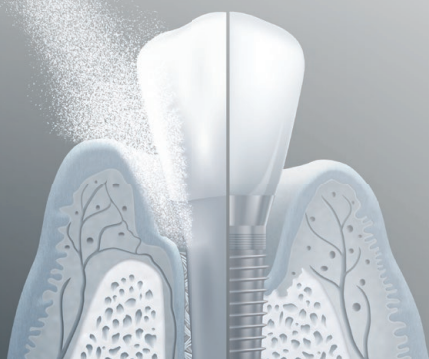
F10243



Midwest* Adapter

F10245

*KaVo, Sirona, W&H, Bien-Air and Midwest are registered trademarks



AIR-N-GO® & OTHER ACCESSORIES



AIR-N-GO® SUPRA tank

F10213



AIR-N-GO® PERIO tank

F10216



Ø0.5 mm AIR-N-GO® SUPRA probe

F10207



Ø1 mm AIR-N-GO® SUPRA probe

F10208



AIR-N-GO® PERIO probe

F10206



AIR-N-GO® o-rings kit

F10205

AIR-N-GO® Easy Front Body

E10207

Autoclavable front body for the AIR-N-GO Easy



Blue ProphyPen

F10554

Disconnectable polisher handpiece (bayonet) delivered with a 135° titanium nozzle and an autoclavable universal wrench.



White ProphyPen

F10557

Disconnectable polisher handpiece (bayonet) delivered with a 135° titanium nozzle and an autoclavable universal wrench.



Titanium nozzle 135° Ø0.7 mm

F10555

PIEZOTOME

CUBE

Ultrasonic Bone Surgery provides Less Trauma and Less Drama for :

- Atraumatic Extractions
- Bone grafting
- Sinus elevations
- Ridge Splitting
- Accelerated Orthodontics



PIEZOTOME® CUBE

US F50108
CANADA F50117

Piezotome CUBE with power cord, Piezotome CUBE handpiece, torque wrench, foot pedal, irrigation bracket, and five (5) sterile disposable irrigation lines

Class IIa medical devices (GMED) - CE 0459

NOTE

Some accessories adapted to Piezotome® 2, Piezotome® Solo, Piezotome® CUBE and ImplantCenter™ 2 are not compatible with the first generation Piezotome® and ImplantCenter™, and vice-versa

- References compatible with 1st generation devices are indicated by a blue square : ☐
- References compatible with 2nd and 3rd generation devices are indicated by a grey square ☐

PIEZOTOME® CUBE ACCESSORIES



Piezotome® CUBE LED handpiece

F12816

Autoclavable handpiece and cord with LED light ring for use with Piezotome CUBE device

Compatible with 2nd generation piezo tips → ■



Piezotome CUBE Foot pedal

F50109



Handpiece support

F50133

Autoclavable handpiece holder for Piezotome CUBE handpiece



Torque Wrench

F50150

Torque wrench for safe application of tips on the Piezotome CUBE LED handpiece



Irrigation Clip

E57353

Single Irrigation Clip for Surgical Ultrasonic and Micro Motor Devices



Irrigation Bracket

F50129

Pole for holding irrigation bag on the Piezotome CUBE

IMPLANT CENTER 2



FUNCTIONS

- I-Surge™: implantology
- Piezotome®: bone surgery
- NEWTRON®: conventional treatments (perio, endo, ...)

IMPLANT CENTER 2 LED: STARTER KIT

F27168 ■

Delivered with i-Surge LED motor, i-Surge LED motor cord, power cord, a progressive footswitch, 2 brackets, 2 handpiece holders and 2 sterilizable irrigation lines, 30 perforators, an Extraction II pack *Contra Angles not supplied

This reference does not include the PIEZOTOME 2 handpiece or tips.

IMPLANT CENTER 2 LED STARTER KIT WITH LED SURGICAL CONTRA ANGLE (20:1)

F27168-CA ■

Delivered with i-Surge LED motor, i-Surge LED motor cord, power cord, a progressive footswitch, 2 brackets, 2 handpiece holders and 2 sterilizable irrigation lines, 30 perforators, an Extraction II pack and LED Surgical Contra Angle (20:1) - Bien Air

This reference does not include the PIEZOTOME 2 handpiece or tips.

- References compatible with 1st generation devices are indicated by a blue square : ■
- References compatible with 2nd and 3rd generation devices are indicated by a grey square ■

ACCESSORIES FOR IMPLANT CENTER™



Implant Center Pedal **F27120**
Foot Pedal for use with the Implant Center ■



Implant Center 2 Foot Control **F27170**
Implant Center 2 Progressive Foot Pedal ■



ImplantCenter™ Bracket **E27113**
Irrigation for use with Implant Center 2, Piezotome Solo, Piezotome 2 ■ ■

Power Cord **E13125**
110 Volt Power Cord for Implant Center, I-Surge and Piezotome ■ ■

ACCESSORIES FOR IMPLANT CENTER™ 2 WITH LED MOTOR



I-Surge™ LED motor **F27210**
I-SURGE LED MOTOR for use with the Implant Center 2 LED only *Contra Angles not supplied ■



i-Surge™ LED Motor Cord **F27211**
Cord for use with the i-Surge LED Motor on Implant Center 2 LED only *Contra Angles not supplied ■

ACCESSORIES FOR IMPLANT CENTER™ 2 WITH NON LED MOTOR



I-Surge™ micro-motor **F27123**
I-Surge Micro-Motor (Motor Only) *Contra-Angles are not supplied For Implant Center 1 only ■ ■



I-Surge Cord **F27124**
I-Surge Micro-Cord (Cord Only)
*Contra-Angles are not supplied For Implant Center 1 only ■ ■

IMPORTANT

The handpieces are equipped with keyway systems to prevent a Piezotome® insert from being screwed onto a NEWTRON® handpiece or a classic insert (scaling, periodontics, endodontics, etc.) from being screwed onto a Piezotome® handpiece.



Piezotome® handpiece + cord **F57321**

Non-disconnectable assembly. For use with Piezotome 1 and Implant Center 1 only.



NEWTRON® Handpiece **F12281**

Autoclavable Handpiece: GII 2-Tone (Grey) NEWTRON OEM. Compatible with Piezotome 1 and Implant Center 1. Need F57305 to connect.



NEWTRON Cord to Piezotome **F57305**

Sterilizable and disconnectable cord for Piezotome® and ImplantCenter™



Piezotome® LED handpiece + cord **F12815**

Compatible with Piezotome Solo, Piezotome 2 and Implant Center 2 device



LED Ring **F12821**

Light Ring for the Piezotome 2 LED Handpiece



NEWTRON® LED handpiece **F12609**

Autoclavable LED Handpiece for Piezotome 2 / Implant Center 2. Need F12830 to connect.



NEWTRON® LED cord **F12830**

Sterilizable and disconnectable cord to connect the NEWTRON LED handpiece to the Implant Center 2 or Piezotome 2



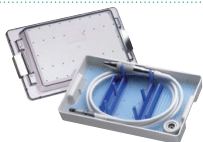
- References compatible with 1st generation devices are indicated by a blue square : ■
- References compatible with 2nd and 3rd generation devices are indicated by a grey square ■



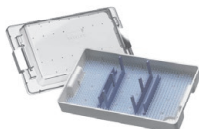
Easytorque Wrench *F57350*
Easytorque Wrench For Piezotome Tips only



Piezotome® Pack (without tips) *F87323*
Sterilization Box, Piezotome Handpiece, Piezotome Cord and Easytorque Dynamometric Wrench



Piezotome® 2 Pack (without tips) *F87523*
Sterilization Box, Piezotome LED Handpiece, Piezotome 2 Cord and Easytorque Wrench



Sterilization Box *F27156*
Piezotome (PZI, PZII) Sterilization box: can hold one handpiece with cord, 2 Tip Kits and 1 Wrench (items are not included)



Irrigation Kit (Sterile Disposable) *F57370*
Kit includes 10 sterile disposable lines and cartridge.



Irrigation Kit (Autoclavable) *F57374*
Kit includes 1 autoclavable irrigation line and 10 sterile disposable perforators. (For use with all I-Surge, Piezotome / Piezotome 2, Implant Center / Implant Center 2)



Perforators (Disposable) *F57372*
10 Disposable perforators for use with the F57374 Irrigation lines



Irrigation Clip *E57353*
Single Irrigation Clip for Surgical Ultrasonic and Micro Motor Devices



Piezotome 2 Foot Control *F57404*
Piezotome 2 Progressive Foot Pedal



Piezotome SOLO: Foot Pedal *F57504*



Piezotome Foot Pedal *E57341*
Foot Pedal for use with the Piezotome



Bracket *E27113*
Irrigation for use with Implant Center 2, Piezotome Solo, Piezotome 2



Piezotome LED Handpiece *F12815*
Piezotome 2, Piezotome Solo LED and Implant Center 2 LED Handpiece and Cord: Non-disconnectable assembly



Piezotome 2 Nose Cone *E12813*
Piezotome 2 stainless steel nose cone



LED Light Guide *E12812*
Light Guide for the Piezotome 2 LED Handpiece



Piezotome Bracket *E57325*
Bottle Holder Bracket for the Piezotome



Hook *E57348*
Irrigation Bottle Bracket Hook for Piezotome 1 only



Bone Surgery Kit

Tips - BS1, BS2L, BS2R, BS4, BS5, BS6, Autoclavable Stand for bone grafting procedures

Bone Surgery Kit
F87309



Bone Surgery-2 Kit

Tips - BS1-2, BS2L-2, BS2R-2, BS4-2, BS5-2, BS6-2, Autoclavable Stand for bone grafting procedures

Bone Surgery-2 Kit
F87509



BS1 - Straight
BS2L - Left-angled
BS2R - Right-angled

F87301
F87302 **F87502**
F87303 **F87503**



BS1S-2 Slim - Depth of cut 9mm

F87525

BS1L-2 Long - Depth of cut 15mm with universal wrench

F87527



BS1- RD - Rounded saw, 280° of active surface

F87557



BS4 BS5 BS6

F87304 **F87504**
F87305 **F87505**
F87306 **F87506**

- References compatible with 1st generation devices are indicated by a blue square ■
- References compatible with 2nd and 3rd generation devices are indicated by a grey square ■

SURGERY

Sinus Lift



Sinus Lift Kit

Tips - SL1, SL2, SL3, SL4, SL5, Autoclavable Stand
(These tips will only work with the Piezotome HP) for lateral approach sinus elevation.



Sinus Lift Kit

F87319 ■

Sinus Lift-2 Kit

F7519 ■



Sinus Lift tips

SL1
SL2
SL3
SL4
SL5

| | |
|-----------------|-----------------|
| ■ F87311 | F87511 ■ |
| ■ F87312 | F87512 ■ |
| ■ F87313 | F87513 ■ |
| ■ F87314 | F87514 ■ |
| ■ F87315 | F87515 ■ |

- References compatible with 1st generation devices are indicated by a blue square ■
- References compatible with 2nd and 3rd generation devices are indicated by a grey square ■



Intralift™ Kit

Tips - TKW1, TKW2, TKW3, TKW4, TKW5, Autoclavable Stand to perform internal sinus elevation.

Intralift™ Kit
F87336

Intralift™ 2 Kit
F87536



TKW1 TKW2 TKW3 TKW4

Intralift™ tips

TKW1 - Conical tip $\varnothing 1.35\text{mm}$ (pilot drilling)

F87331 F87531

TKW2 - Cylindrical tip $\varnothing 2.1\text{mm}$ (preliminary drilling)

F87332 F87532

TKW3 - Cylindrical tip $\varnothing 2.35\text{mm}$ (preliminary drilling)

F87333 F87533

TKW4 - Cylindrical tip $\varnothing 2.8\text{mm}$ (secondary drilling)

F87334 F87534



TKW5 - Non cutting "trumpet" tip (sinus membrane elevation)

F87335 F87535

TKW6 - Sinus membrane elevation $\varnothing 4,2\text{mm}$

F87538

SURGERY

Extraction



EXTRACTION 2 PACK

Sterilization Box, Piezotome 2 Handpiece, Piezotome 2 Cord, Extraction 2 Kit and Easytorque Wrench for atraumatic extractions

Extraction 2 Pack
F87340



Extraction Kit (1st generation)

Tips - LC1, LC190, LC2, LC2R, LC2L, Ninja, Autoclavable Stand and Universal Wrench to perform atraumatic extractions

Extraction kit
F87346

Extraction-2 Kit

Tips - LC1-2, LC1 90-2, LC2-2, LC2R-2, LC2L-2, Ninja-2, Autoclavable Stand and Universal Wrench for atraumatic extractions.

Extraction-2 Kit
F87546



Extraction tips

LC1
LC2
LC2L
LC2R

| | |
|---------------|---------------|
| F87307 | F87507 |
| F87342 | F87542 |
| F87343 | F87543 |
| F87344 | F87544 |



Ninja®

| | |
|---------------|---------------|
| F87345 | F87545 |
|---------------|---------------|



Crown Extension Kit

BS6, CE1, CE2, CE3 Tips with 1 Universal Wrench and Autoclavable Stand to perform crown lengthening procedures.

CE Kit

F87354 ■

CE 2 Kit

F87554 ■



Crown Extension tips

CE1 - Diamond-coated spherical tip
ø1.75mm

■ **F87351**

F87551 ■

CE2 - Diamond-coated spherical tip
ø1.20mm

■ **F87352**

F87552 ■

CE3 - Diamond-coated straight tip
on 5mm (laser mark placed at
3mm: biologic width)

■ **F87353**

F87553 ■



BS6

■ **F87306**

F87506 ■



Specialist Upgrade Tip Kits

Bone Surgery 2 Tip Kit, Sinus Lift 2 Tip
Kit, IntraLift 2 Tip Kit, Clinical Book
and DVD

F87521 ■

SURGERY

Crest Splitting



Crest Splitting Kit

CS1, CS2, CS3, CS4, CS5, CS6, tips
an autoclavable metal support, an
autoclavable universal wrench.

CS 2 Kit
F87567



Crest Splitting tips

CS1
CS2
CS3
CS4

F87561
F87562
F87563
F87564



CS5
CS6

F87565
F87566



Piezocision™ Kit

Delivered with PZ1, PZ2L, PZ3R, PZ3 tips, an autoclavable metal support and an autoclavable universal wrench.

F87576 ■



Piezocision™ tips

PZ1 - Anterior corticotomies.

F87571 ■

PZ2L (left oriented)
Lateral corticotomies on patient's right vestibular arch
To be used with pendulum motion

F87572 ■

PZ2R (right oriented)
Lateral corticotomies on patient's left vestibular arch
To be used with pendulum motion

F87573 ■

PZ3 - Anterior corticotomies for root proximity concerns

F87574 ■



SURGERY

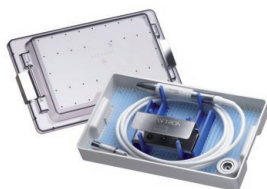
Packs and kits



Essential-2 Kit

BS1S II, BS4 II, LC2 II, SL1 II, SL2 II, SL3 II tips, an autoclavable metal support, an autoclavable universal wrench

F87528 ■



NEWTRON® PERIO PACK

Sterilization Box, NEWTRON Handpiece, NEWTRON Cord, Auto Stand, Tips H1, H2L, H2R, H3, H4L, H4R and Easytorque Wrench

NEWTRON®
Perio Pack

F87320 ■

NEWTRON®
Perio 2 LED Pack

F87520 ■

NEWTRON® RETRO PACK

Delivered with a sterilization box, an autoclavable NEWTRON® handpiece, an autoclavable NEWTRON® cord, a NEWTRON® Retro kit and a Piezotome® autoclavable wrench.

F87322 ■

NEWTRON PACK (without tips)

Sterilization Box, NEWTRON Handpiece, NEWTRON Cord and Easytorque Wrench

F87324 ■

NEWTRON 2 PACK (without tips)

Sterilization Box, NEWTRON LED Handpiece, NEWTRON LED Cord and Easytorque Wrench

F87524 ■

IMPORTANT

NEWTRON® kits are compatible with the NEWTRON® and NEWTRON® LED handpieces.



NEWTRON® Perio Kit

Tips - H1, H2L, H2R, H3, H4L, H4R,
Autoclavable Stand

F87321



NEWTRON® Implant Protect Kit

Tips IP1, IP2L, IP2R, IP3L and IP3R,
an autoclavable metal support,
an autoclavable universal wrench.

F02120



NEWTRON® Micro-Retro Kit

Tips - P14D, P15LD, P15RD with 3
Yellow Wrenches and Autoclavable
Box

F87325



NEWTRON® Retro Kit

Tips - S12-70D, AS6D, ASLD, ASRD,
Autoclavable Stand

F87326



Autoclavable Stand - NEWTRON Tips

NEWTRON- Silver Metal Autoclavable
Stand - Holds 6 tips (not included)

N88449





MINILED

SUPERCHARGED

Mini LED™ SuperCharged

F05214

2,200 mWcm2 Output, (Modes: Full, Pulse & Ramp)
Handpiece, Battery, Charger, Power Supply, Light
Guide 7.5mm, Oval Light Shield (Cordless)

Mini LED™ SuperCharged handpiece

F05217



MINILED

ORTHO 2

Mini LED™ Ortho 2

F05220

3,000 mWcm2 Output (Modes 4, 8, 16 & 32 seconds)
Handpiece, Battery, Charger, Power Supply, Light
Guide 5.5mm, Oval Light Shield (Cordless)



Mini LED™ Black

F05400

Mini LED Black handpiece, 7.5mm light guide and
light shield. Handpiece requires 3 AA batteries
(Batteries are included)



MINILED

STANDARD

Mini LED™ Standard

F02611

Modes: Full, Pulse & Ramp. Handpiece, Battery, Charger, Power Supply, Light Guide 7.5mm, Oval Light Shield (Cordless)

Wavelength: 420 - 480nm
Li-Ion battery
Handpiece: anodized aluminium

Mini LED™ Handpiece

F02530

Mini LED Handpiece for Battery operated unit

POLYMERIZATION

Accessories

For Mini LED™ SuperCharged, Mini LED™ Ortho 2



Mini LED Battery Charger Base

F02510



Mini LED Battery Lithium Ion

F02520



Power supply with US plug for Mini LED

F02544



Light Shield

F05407

Light shield for Mini LED, SuperCharged, Ortho2 & Black

Oval Light Shield

F02555

Oval Light Shield for Standard Mini LED

For Mini LED™, Mini LED™ SuperCharged, Mini LED™ Ortho 2



**Light Guide 7.5mm Opalescent -
Minimum output 1,250 mWcm2**

F02648



Light Guide, 5.5mm, Opalescent

F02652



Light Guide, 5.5mm, black

F02658



**Standard Light Guide, 7.5mm diameter
for the Mini LED Auto Focus**

F02654



**Light Guide 7.5mm Opalescent
for Mini LED Black**

F05409

PROSTHESIS & AESTHETICS

Gingival Retraction Paste

EXPASYL™



69 ACTEON PHARMA

EXPASYL INTRO KIT

Expasyl Intro Kit (Applicator Gun, 6 Capsules, 12 Applicator Tips)

294100



1 MANUAL APPLICATOR

Expasyl Applicaton Gun

260900



EXPASYL CAPSULE - 20 PACK (STANDARD) 261030

EXPASYL CAPSULE - 20 PACK (STRAWBERRY) 261001



EXPASYL APPLICATOR TIP - BOX OF 40 261040

EXPASYL APPLICATOR TIP - BOX OF 100 261005

PROPHYLAXIS & PERIODONTICS

Hemostasis and Splinting

HEMOSTASYL™ KIT



Hemostatic dressing with mechanical action

INDICATION

To be used in all cases of moderate bleeding occurring in routine dental practice (scaling, etc.)

HEMOSTASYL™ INTRO KIT - Hemostasyl Intro Kit (2 Syringes, 40 Tips) **246200**

HEMOSTASYL SYRINGE - Hemostasyl Syringe - 2 Pack **246050**

HEMOSTASYL APPLICATOR TIP - Hemostasyl Applicator Tips - Box of 40 **246100**

Hemostasyl™ Syringes: Class IIa medical device (GMED) - CE 0459

Hemostasyl™ Applicator Tips: Class I medical device - CE

*Hemostasyl™ is currently unavailable in Canada

70
ACTEON PHARMA

BIOSPLINT™



Splinting ribbons

INDICATIONS

- Stabilization of mobile teeth
- Temporary replacement of missing teeth
- Reinforcement or repairing of temporary or permanent bridges
- Maintain of inter-dental spaces

PROPERTIES

Contention

- Low thickness avoids any oral embarrassment
- May remain in place for many years
- Treatment with supercritical fluids: improves impregnation of the fibre by composite.

BIOSPLINT SPLINTING RIBBONS - REFILL

201661

BioSplint Ribbons- Refill: 8 Splinting Ribbons

Class IIa medical device (GMED) - CE 0459

*BioSplint™ is unavailable in Canada

Ris<Kontrol®



Disposable tips for air/water syringes

Classic by
Ris<Kontrol®

Box of 250 non sterile tips



White
Blue
Yellow
Green
Pink

201664
201665
201666
201667
201668

Class I medical devices - CE

Art by
Ris<Kontrol®

Box of 250 non sterile tips



White/Mint

201700

Class I medical devices - CE

RISKONTROL ADAPTERS

Adapter ADEC II - fits Riskontrol Perfect only

200195

Adapter BELMONT

200158

Adapter Dental EZ

200164

Adapter DCI - fits Riskontrol Perfect only

200152

Adapter Siemens 4000

200178

Adapter Sirona

200154

Adapter KAVO

200171

Adapter Luzzani - fits Riskontrol Perfect only

200150



MODULES



SP NEWTRON® 4K5V MODULE
with connectors (10 & 4 pin)

F55297



SP NEWTRON® 4K3, 7V MODULE

F55287

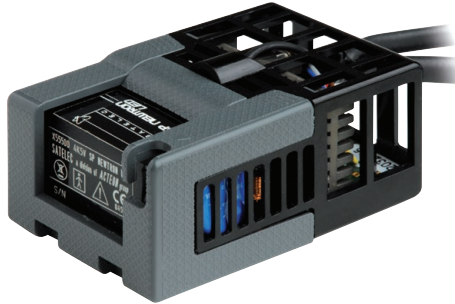
Module only. Does not contain harness adapter (available separately if needed).

PIEZO ULTRASONIC MODULE
F55292

SP NEWTRON universal w/ connector, AHP, handpiece tubing, Potentiometer. Note: Does not include Air-Electric switch or power supply. Items are available separately.

PIEZO ULTRASONIC MODULE WITH
HYGIENE TIPS
F55292S

Reference F55292 with Autoclavable Box, 3 color coded torque wrenches, Tips: #1, 10Z, H3. Note: Does not include Air-Electric switch or power supply. Items are available separately.



MODULES



**SP NEWTRON® LED MODULE
with connector**

X55508

PIEZO ULTRASONIC MODULE LED F55521

SP NEWTRON LED (Universal), w/ LED handpiece, HP tubing Potentiometer. Note: Does not include Air-Electric switch or power supply. Items are available separately.

PIEZO ULTRASONIC MODULE LED W/ HYGIENE TIPS F55521S

Reference F55521 with Autoclavable Box, three color coded torque wrenches, Tips: # 1, 10Z, H3. Note: Does not include Air-Electric switch or power supply. Items are available separately.

HANDPIECES



NEWTRON® handpiece
autoclavable, light grey/dark grey

F12281



NEWTRON® LED handpiece
autoclavable

F12609



NEWTRON® SLIM B.LED handpiece
with white LED ring

F12905

HANDPIECES ACCESSORIES



LED ring
for NEWTRON® LED handpiece

F12605



Blue LED ring
for NEWTRON® SLIM B.LED handpiece

F62201



White LED ring
or NEWTRON® SLIM B.LED handpiece

F12915



ACCESSORIES



Potentiometer *F00524*
Potentiometer with wire harness *F55213*
Potentiometer Complete *F55213K*
 Potentiometer, wire harness, knob & sticker

Potentiometer with wire harness* *F55213PC1*
 - Pelton & Crane
Potentiometer with wire harness* *F55213PC2*
 - Pelton & Crane

***Tubing reference depends on Pelton delivery head series**

Knob and Sticker for the SP NEWTRON *F00526*
 Knob and Sticker for the SP NEWTRON

TRANSFORMER 36V 2.78A+CORD
DTHPU101-36C13M
 Power supply for SP NEWTRON + Mini LED + BUILT-IN SOPRO Dock Needed for retro fitted NEWTRON, MINI LED or CAMERA OEM installation

Air Electric Switch *E00596-OEM*
 For automatic operation needed for retro fitted NEWTRON, MINI LED or CAMERA OEM installation

Water Adapter *M00100*
 Water Adapter for SP NEWTRON

Water Solenoid Kit *M00103*
 Water Solenoid Kit for installation without water block

Air Bleed Pack *M00101*
 Air Bleed Pack for SP NEWTRON

Handpiece Tubing A-dec (61") **F00184**

Handpiece Tubing A-dec GREY3 (61") **F01153**

Handpiece Tubing A-dec (81") **F00188**

Handpiece Tubing A-dec GREY3 (81") **F01154**

Handpiece Tubing LED Surf6 (61") **F00616**

Handpiece Tubing LED Surf6 (81") **F00629**

Handpiece Tubing LED Grey3 (61") **F00632**

Handpiece Tubing LED Grey3 (81") **F00633**

Handpiece Tubing - Light grey silicone **F00195**

Handpiece Tubing - Light grey silicone **F00197**
with connectors

Handpiece Tubing - Light grey silicone F00197PC1
with connectors - Pelton and Crane. Tubing reference
depends on Pelton delivery head series.

Handpiece Tubing - Light grey silicone F00197PC2
with connectors - Pelton and Crane. Tubing reference
depends on Pelton delivery head series.

Handpiece Tubing Slim LED G3 61" **F01205**

Handpiece Tubing Slim LED G3 81" **F01206**

Handpiece Tubing- Light grey silicone **F00631**
for use with SP NEWTRON LED



MINILED

OEM

Mini LED™ OEM (Built In)

Mini LED Module, Light Grey Cord, Handpiece, Light Guide 7.5mm, Protective Light Shield (Fast, Pulse & Ramp) *Note - Requires a 24 VAC Transformer.

with light grey cord

F02720

Mini LED™ OEM handpiece

F02710

MINILED

SUPERCHARGED
OEM



Mini LED™ SuperCharged OEM (Built In)

2,200 mWcm² Output, (Modes: Full, Pulse & Ramp) Handpiece, Module, Light Grey Cord, Light Guide 7.5mm, Oval Light Shield) Note - Requires a 24 VAC Transformer.

with light grey cord

F05205

Mini LED™ SuperCharged OEM handpiece

F05218



POLYMERIZATION

Modules and Cords



OEM module

F02730

TRANSFORMER 36V 2.78A+CORD DTHPU101-36C13M

Power supply for SP NEWTRON + Mini LED + BUILT-IN
SOPRO Dock Needed for retro fitted NEWTRON, MINI LED
or CAMERA OEM installation



Air Electric Switch

E00596-OEM

For automatic operation needed for retro fitted NEWTRON,
MINI LED or CAMERA OEM installation

Mini LED Handpiece Tubing OEM - light grey

F02721

**Mini LED Handpiece Tubing OEM - light grey
- Pelton & Crane**

F02721PC1

ADEC® Surf 6 cord

F02326

ADEC® 500 Gray 3 (medium grey) cord

F02327

*Adec is a registered trademark

BUILT-IN DOCKING STATIONS

Dock M-USB-Light Grey

S 717 1036

BUILT-IN DOCKING STATION WITH MEMORY:

Features Analog and USB 2.0 Outputs for Dental Unit
- LIGHT GREY colored tubing - One built-in docking station with Image Memory, one 21 foot linking cable with LIGHT GREY color tubing, one S-Video Cable, one Composite

LINKING CABLES FOR BUILT-IN DOCKING



White Linking cable 21ft

922067

FOR BUILT-IN DOCK

SOPRO camera linking cable to build into the arm of the dental unit

Grey Linking cable 21ft

922070

FOR BUILT-IN DOCK

SOPRO camera linking cable to build into the arm of the dental unit

Light Grey Linking cable 21ft

922073

FOR BUILT-IN DOCK

SOPRO camera linking cable to build into the arm of the dental unit

Light Grey Linking cable 21ft

922073PC1

Pelton & Crane FOR BUILT-IN DOCK

SOPRO camera linking cable to build into the arm of the dental unit - cable needed depends on Pelton delivery head series number.

Light Grey Linking cable 21ft

922073PC2

Pelton & Crane FOR BUILT-IN DOCK

SOPRO camera linking cable to build into the arm of the dental unit - cable needed depends on Pelton delivery head series number.

INTRAORAL CAMERAS

Linking cables



White Linking cable 21ft

922067

FOR BUILT-IN DOCK

SOPRO camera linking cable to build into the arm of the dental unit

Grey Linking cable 21ft

922070

FOR BUILT-IN DOCK

SOPRO camera linking cable to build into the arm of the dental unit

Light Grey Linking cable 21ft

922073

FOR BUILT-IN DOCK

SOPRO camera linking cable to build into the arm of the dental unit

Light Grey Linking cable 21ft

922073PC1

Pelton & Crane FOR BUILT-IN DOCK

SOPRO camera linking cable to build into the arm of the dental unit - linking cable needed depends on Pelton delivery head.

Light Grey Linking cable 21ft

922073PC2

Pelton & Crane FOR BUILT-IN DOCK

SOPRO camera linking cable to build into the arm of the dental unit - linking cable needed depends on Pelton delivery head.

SURF6 LINKING CABLE

922118

FOR DOCK MU USB w/swivel connector (7m/23ft) w/clip

SURF6 LINKING CABLE

922117

FOR DOCK MU USB w/swivel connector (2m/6ft) w/clip

GREY3 LINKING CABLE

922127

FOR DOCK MU USB w/swivel connector (7m/23ft) w/clip

GREY3 LINKING CABLE

922126

FOR DOCK MU USB w/swivel connector (2m/6ft) w/clip

SURF6 LINKING CABLE

922139

FOR DOCK U USB w/swivel connector (7m/23ft) w/clip

SURF6 LINKING CABLE

922138

FOR DOCK U USB w/swivel connector (2m/6ft) w/clip

GREY3 LINKING CABLE

922141

FOR DOCK U USB w/swivel connector (7m/23ft) w/clip

GREY3 LINKING CABLE

922140

FOR DOCK U USB w/swivel connector (2m/6ft) w/clip

INTRAORAL CAMERAS

Linking cables

**GREY LINKING CABLE 21ft****922163**

FOR BUILT-IN U USB DOCK SOPRO camera linking cable to build into the arm of the dental unit

GREY3 LINKING CABLE**922141**

FOR DOCK U USB w/swivel connector (7m/23ft) w/clip

LIGHT GREY LINKING CABLE 21ft**922143**

FOR BUILT-IN U USB DOCK

SOPRO camera linking cable to build into the arm of the dental unit

7M MU USB Linking Cable f/MidMark**922133**

7M MU USB Linking cable f/MidMark

Light Grey Linking cable 21ft**922169**

7M U USB Linking cable f/MidMark

8M USB Cable**123540**

USB CABLE 26 ft for Dock MUSB reference S 717 1001

TRANSFORMER 36V 2.78A+CORD**DTHPU101-36C13M**

Power supply for SP NEWTRON + Mini LED + BUILT-IN SOPRO Dock Needed for retro fitted NEWTRON, MINI LED or CAMERA OEM installation

Air Electric Switch**E00596-OEM**

For automatic operation needed for retro fitted NEWTRON, MINI LED or CAMERA OEM installation



RELAX. WE'VE GOT YOU COVERED

ACTEON® offers a One-Year, No-Questions-Asked Warranty on all its devices.* If anything goes wrong within the first year, we will fix it for free.**

* Excludes all consumable products including but not limited to: ultrasonic tips, wrenches, imaging plates, prophy powder, air-water syringes, curing light guides.

** ACTEON reserves the right to change this policy without notice or modify accordingly due to malicious or deliberate damage.

ACTEON North America | 124 Gaither Dr Suite 140 | Mount Laurel, NJ 08054
Technical Support: 877-4ACTEON | Company Main: 800-289-6367
info@acteonusa.com | www.acteongroup.com/us



MINIMALLY
INVASIVE
SOLUTIONS