

2015 CATALOG



Palmero Health Care

A Family Business – A Family Story

Palmero Health Care has been a player in the dental industry since 1931 when Joe Palmero became one of the industry's first independent manufacturer's representatives. Inspired to use color coding, Joe soon became known to most of the distributors east of the Mississippi, as much for his dynamic personality as for the products he sold. Eventually Joe Palmero stopped repping other company's products and developed his own product line centering around unique and inventive items. That innovative legacy continues with the company's current president, Joe's son, Ken Palmero, who has directed the company into an infection control-based enterprise.



Joe Palmero, Founder



Ken Palmero, President

Ken has built the Palmero Health Care name by being a resource for information on surface disinfectants and "Bearriers." He built and developed a great product line by creating the best products, such as those with the absolute best chemistry/delivery system available for their application.

Ken Palmero has reorganized the company's production facility, updating everything from pallet racks and product identification systems, new production/accounting software, and new customer service to computer/phone systems, incorporating the most advanced procedures in the industry. Palmero Health Care has added 40,000 square feet of warehouse space and reorganized the entire production facility. The company modernized procedures to become ISO 9001:1994 certified and later upgraded to ISO 9001:2008 certification. These are all examples of Palmero's commitment to constantly provide quality products and services to our business partners.



Palmero Health Care is a paradigm of the small mom and pop business with its roots in the dental and health care industries. The company is proud to be named by its customers as the most supportive manufacturer in the industry.

Contents

Disinfectants	3-6
DisCide ULTRA	3-4
DisCide Aerosol	5
DisAseptic XRQ	5-6
DisCide Effect	6
Miscellaneous Wipes	7-8
Bearriers™	9-12
Eyewear	13-46
Safety	14-34
Overshield	30-31
Bifocal	34-37
Dynamic Disposables	38
Bonding	39-41
Magnification Items	41-43
Illumination Accessories	43-44
Accessories	45-46
Mirrors and Accessories	47
X-Ray	48-54
X-ray Aprons	49-52
Apron Color and Pattern Guide	52
Apron Hangers	53
X-ray Accessories	54
Evacuation	55-57
Impression and Cement	58-61
Candeez™ Mixing Bowls	59
Mixing Spatulas	60
Mixing Accessories	61
Cleaners	
Maintenance Products	62-67
Topcat Cleaners	63-65
Topcat Accessories	66
Portable Power Sprayers	67
Bur Blocks	68-69
Miscellaneous	70-78
Holders	71-73
Accessories	74-77
New Products	78-79

PALMEROTM

HEALTH CARE

The Healthcare Company With A Heart



ISO 9001
QMI-SAI Global

**Palmero
Health Care
is certified
ISO 9001:2008**



**Social Media
Like us!**



AWARDS

**Best in Stratford 2011
& 2012 Manufacture
of Infection Control
Products**



Members



Proud Member

**Members of the Stratford and Valley
Chamber of Commerces and the
Bridgeport Regional Business Council**



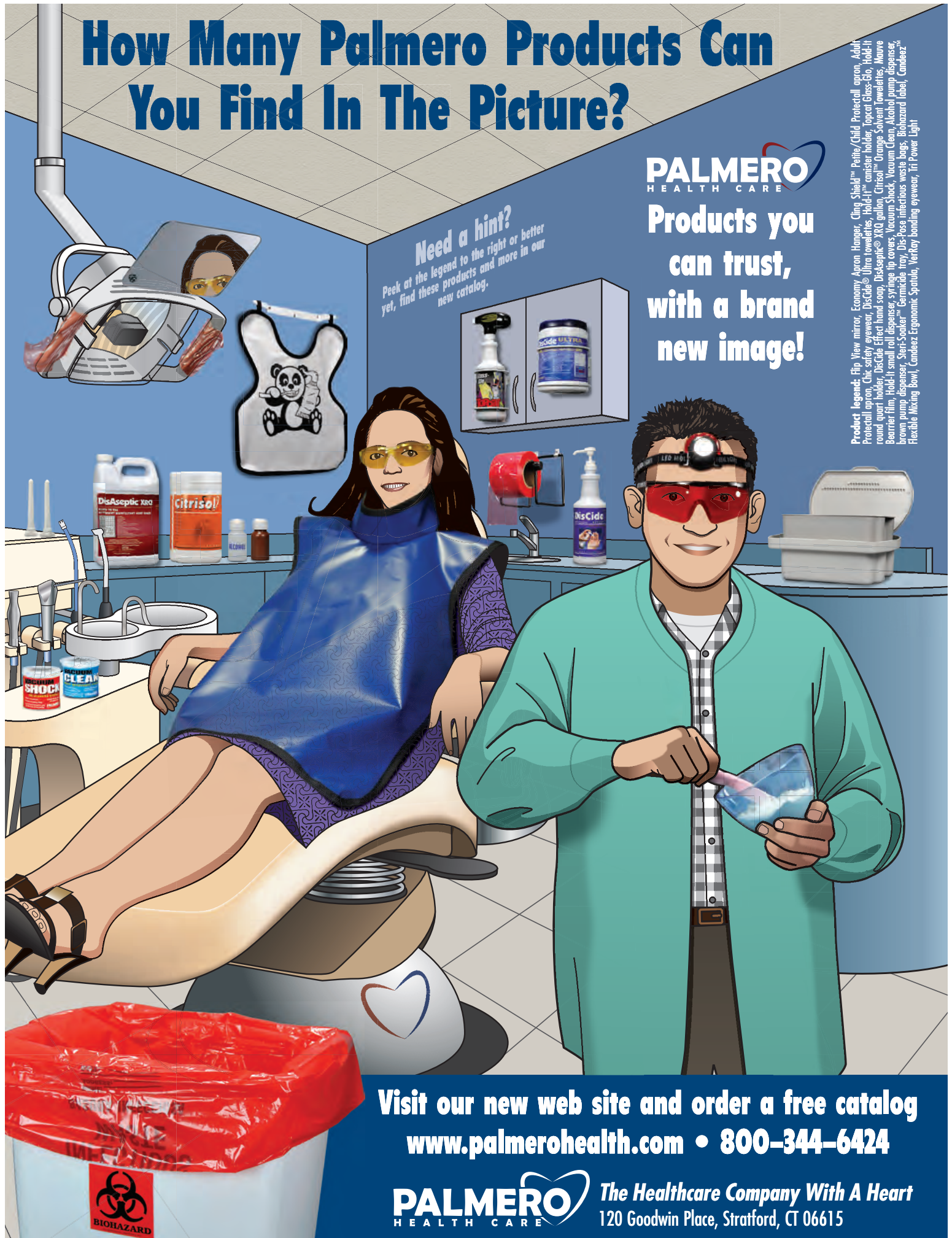
How Many Palmero Products Can You Find In The Picture?

PALMERO
HEALTH CARE

Products you
can trust,
with a brand
new image!

Need a hint?
Peek at the legend to the right or better
yet, find these products and more in our
new catalog.

Product legend: Flip View mirror, Economy Apron Hanger, Cling Shield™, Petite/Child Protection apron, Adult Protection apron, Chic safety eyewear, DisCide® Ultra towelies, Hold-It™ container holder, Topcat Glass-Glo, Hold-It round quart holder, DisCide Effect hand soap, DisSeptic® XRQ gallon, Citrisol™ Orange Solvent Towellette, Maave Barrier film, Hold-It small roll dispenser, syringe tip covers, Vacuum Shock, Vacuum Clean, Alcohol pump dispenser, brown pump dispenser, Sieri-Sooker™, Germicide tray, Dis-Pose infectious waste bags, Biohazard label, Candeez™ Flexible Mixing Bowl, Candeez Ergonomic Spatula, VerKey bonding eyewear, Iri Power Light



Visit our new web site and order a free catalog
www.palmerohealth.com • 800-344-6424

PALMERO
HEALTH CARE

The Healthcare Company With A Heart
120 Goodwin Place, Stratford, CT 06615

DisCide[®] ULTRA



KILLS MRSA IN **ONLY** ONE MINUTE

DisCide[®] - the only one-minute killer. DisCide[®] Ultra is the only one-step, hospital-use disinfectant that can kill deadly pathogens* in one minute. That's the kind of protection your patients and staff need. And that's exactly what **DisCide Ultra** delivers. **A two-minute kill is ineffective if it evaporates and is gone in 60 seconds.** If your disinfectant evaporates

in less time than it takes to kill harmful germs, people are going to get sick. Compare evaporation rates and you'll see that only **DisCide Ultra** kills harmful germs in one minute or less— long before it evaporates. It's the fastest kill time on the market. No other product even comes close. **DisCide** to save lives. Visit www.palmerohealth.com for more information.

* In laboratory tests **DisCide Ultra** killed TB, MRSA, HIV, H1N1, HBV, HBC, VRE, RSV, H3N2, influenza A, adenovirus, HSV-2, coronavirus, *Pseudomonas aeruginosa*, salmonella, staph, *E. coli*, athlete's foot, among others, **IN ONE MINUTE OR LESS.**

To order call: 1-800-344-6424

PALMERO[™]
HEALTH CARE

D I S I N F E C T A N T S

DisCide® ULTRA

*Containers / Lids are Latex Free on towelettes and liquids



DisCide ULTRA Kills all these deadly germs
Among others



MRSA



HIV



E. coli



H1N1



HBV, HBC



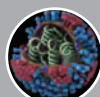
VRE



RSV



H3N2



influenza-A



HSV-2



coronavirus



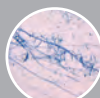
Pseudomonas aeruginosa



salmonella



staph



athlete's foot

**...IN ONE
MINUTE
OR LESS!!!**

10DIS: 60 count, 10½" x 10" towelettes

60DIS: 160 count, 6" x 6¾" towelettes
(not shown)

DisCide® ULTRA is a hospital-use, one-step, ready-to-use quaternary ammonium, high-level alcohol-based disinfectant that is laboratory-proven to kill deadly pathogens* in one minute.

This is the fastest kill time on the market. Available in towelettes and spray, **DisCide** is non-corrosive and non-staining and leaves behind a pleasant herbal scent with no unsightly residue. **DisCide** is EPA-registered and meets the disinfection requirements of OSHA's Blood-borne Pathogen Standard.

* TB, MRSA, HIV, H1N1, HBV, HBC, VRE, RSV, H3N2, influenza A, adenovirus, HSV-2, coronavirus, *Pseudomonas aeruginosa*, salmonella, staph, *E. coli*, athlete's foot fungus, among others



3565G: Gallon refill

**One-Step,
Ready-To-Use**
No mixing or
measuring!



3565Q: Quart with sprayer

Also available:
3567:
Empty quart bottle
with sprayer
(not shown)



3564: 4 oz. bottle

Please note: DisCide ULTRA gallon, quart and 4 oz. containers are not shown to scale but have been sized to give a better view of the product.



3513

DisCide® Disinfectant Aerosol Spray

An aerosol surface disinfectant and air deodorizer. Effectively kills TB, HIV, polio 1 and 2, *Staphylococcus aureus*, *Pseudomonas aeruginosa*, *Salmonella choleraesuis*, herpes 1, influenza A2, *Trichophyton mentagrophytes* and *Aspergillus Niger*, among others. Dispenses a smooth spray for even coverage with a pleasant lemon scent. Meets OSHA requirements as a hospital-grade disinfectant. EPA-registered.

3513: 15.5 oz. can



3512

DisCide® Aerosol Germicidal Foam Cleaner

A broad-spectrum hospital-use foaming pseudomonacidal and staphylocidal disinfectant. Effectively kills TB and HIV. Also a bactericidal, virucidal, germicidal and fungicidal. Prevents mold and mildew from forming and has a pleasant fresh scent. EPA-registered.

3512: 20 oz. can

DisAseptic® XRQ

DisAseptic® XRQ (formerly DisCide® V) is a cost-effective quaternary ammonium-based detergent, disinfectant, cleaner and deodorizer in a convenient quart-sized spray. Laboratory-proven to kill microorganisms on hard, inanimate, non-porous surfaces, reducing the risk of infection and cross-contamination. EPA-registered. Containers are Latex-Free



3532

DisAseptic XRQ 5 Gallon with Spigot One case contains two 2.5 gallon bottles plus spigot.



3503

DisAseptic XRQ Quart Bottle with Sprayer



3504

DisAseptic XRQ Gallon Refill

To order call: 1-800-344-6424

PALMERO™
HEALTH CARE

Empty Quart Bottle

For use with DisCide Ultra or DisAseptic XRQ spray liquid.

- 3519: Unlabeled quart bottle with sprayer
- 3508: Empty quart bottle and sprayer with DisAseptic XRQ label
- 3567: Empty quart bottle and sprayer with DisCide® Ultra label
- 3567T: Trigger-style spray head only
- 4210: Dynamic 1 Touch Quart Sprayer Head



3519: Empty Quart Bottle



3567T: Trigger-style head only



Spigot

Fits the DisAseptic XRQ 2.5 gallon bottles. Lock open handle provides regulated flow. Fits ¾" opening, 16 thread, 1" long.

3532SP: Reusable spigot



DisCide® Effect Professional Hand Asepsis Soap

Promote proper hand asepsis with this hand soap that contains PCMX, a broad-spectrum antimicrobial agent effective against germs, bacteria, yeast and fungal microorganisms. The viscous formula removes stubborn dirt, grease and transient bacteria without irritating sensitive skin. Contains aloe vera, vitamin E and a fresh almond scent to promote healthy skin and staff compliance. Containers are Latex-Free



3544: 5 Gallon refill.
One case contains two
2.5 gallon bottles



3543: Quart bottle with
pump dispenser



3542: Gallon refill



3500

DisCide® XRA Hand Sanitizing Wipes

New and improved formula that kills 99.9% of disease-causing microbes. Contains aloe and vitamin E to soothe and moisturize the skin. Fresh wintergreen fragrance leaves skin tingling. Dries in seconds to ensure staff compliance with hand asepsis guidelines. 6" x 8" towelettes

3500: 160 count canister



3538

TelAseptic™ Telephone Cleaning Wipes

TelAseptic Towelettes are perfect for use in reception areas, exam rooms, labs – virtually all healthcare settings along with public and personal phones. Contain a light fragrance for a pleasant fresh scent. 6" x 6¾" towelettes. Latex-Free Container/Lid

3538: 160 count canister



3516

Versi-Wipe™ Dry Towelettes

Versi-Wipes can be used as a dry or moist wipe. Add DisAseptic XRQ or a simple soap and water solution. Or create your own special mix to create your own custom wipes. An OSHA-compliant label with blank fill-in areas is attached so any chemical solution used with the towelettes may be written in and accurately labeled.

6" x 6¾" towelettes. Latex-Free Container/Lid

3516: 160 count canister

Refreshing™ Patient Facial Towelettes

A lightly scented facial wipe to refresh either the patient or staff after exams and procedures. Great for use in any professional, recreational or home setting for quick cleanups. Specially formulated with lanolin to moisturize skin as it cleans.

Latex-Free Container/Lid 6" x 6¾" towelettes

3515: 140 count canister



3515

ProVision Crystal Clear Optical Cleaning Wipes

Convenient wipes premoistened with anti-fog, anti-static lens cleaning and polishing solution. Cleans dirt, grease, oils and blood-borne pathogens from eyewear.

Latex-Free Container/Lid 6" x 6¾" towelettes

3534: 160 count canister



3534

Citrisol™ Orange Solvent Towelettes

New and improved!

Two-ply premoistened orange solvent towelettes with lanolin. One side abrasive to loosen dirt and grease, the other side smooth to wipe clean. Quickly removes cements, impression materials, adhesives, grease, oil, gum, tar, shoe scuffs and more from most surfaces found in the dental operator or healthcare environment.

9½" x 12" towelettes

69: 70 count canister



69

We made our Bearriers
FUN!
But with
SERIOUS protection...

B
E
A
R
R
I
E
R
S[™]

**Use Palmero
Bearriers for:**

- **Chairs**
- **Handles**
- **Instruments**
- **X-ray equipment**
- **Keyboards**
- **And more...**

To order call: 1-800-344-6424



Bearrier[™] Film

Polyethylene film with a low-tack adhesive that adheres to most operatory surfaces. Film is perforated for easy separation of sheets. Leaves no residue. Makes cleanup between patients fast and easy. Available in a variety of sizes and colors. Protects equipment from harmful chemicals by minimizing disinfection requirements. Protects staff and patients from cross-contamination. Latex-free.



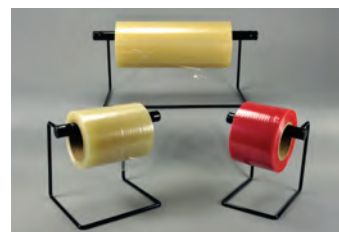
1803C, 1803B, 1803M, 1803CP, 1865, 1866, 1867

Comes in a dispensing box

Also available:
Hold-It roll
dispenser racks

4" x 6" film
(1200 sheets per roll):
1803C: Clear
1803B: Blue
1803M: Mauve
1803CP: Blue bear print

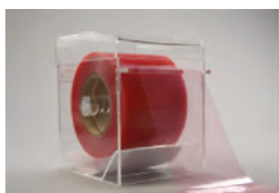
1865C: Clear - 2½" x 6"
(1200 sheets per roll)
1866C: Clear - 6" x 9"
(800 sheets per roll)
1867C: Clear - 12" x 14"
(514 sheets per roll)



See page 73 for full
product description

Dispensers

1855A: Acrylic Dispenser made of clear acrylic overall
dimensions: 5½" W x 7⅛" H x 6¼" D
Fits 4" x 6" and 2 ½" x 6" Film



1855A
(Bearrier film not included)

1855: High impact and polystyrene
Fits 4" x 6" Film



1855
(Bearrier film not included)

T-Light Handle Protectors

Fits over all "T" style handles. Easy to apply and remove.
Reduce the risk of cross-contamination when touching
the light repeatedly. Latex-free. 5¾" x 4¼". 500/box

1914

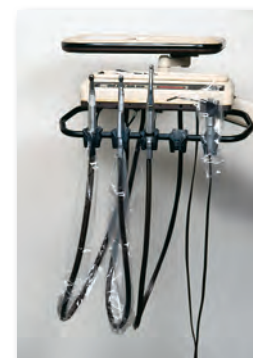


1914

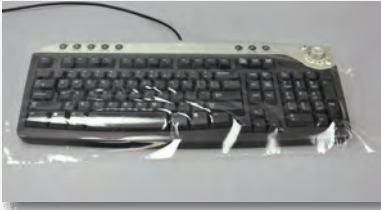
Tubing and Armrest Protectors

Keeps tubing clean and safe from contaminants. Multi-
purpose; can also be used as an arm rest protector. Roll can
be cut to required length. Available in a variety of widths to
fit over any tubing. Latex-free. 1200 feet/roll

1912: 2¼" wide
1912B: 3" wide
1913: 4" wide



1912, 1912B, 1913



1802

Keyboard Film

Plastic sheets with a light adhesive that covers virtually any keyboard. Perforated sheets for ease of use. Prevents cross-contamination. Leaves behind no residue. 800 sheets/roll. Latex-free. 9" x 19"

1802



1915A, 1970, 1971, 1915X

Digital X-Ray Sensor Protectors

Disposable plastic covers for digital x-ray sensors. Prevents cross-contamination, protecting patients and staff. Designed as a universal fit for a variety of manufacturer's equipment. Latex-free. 500/box

1915A: 2½" x 10" (size 2)

1970: 1⅜" x 8"

1971: 1⅝" x 8" (size 1)

1915X: Economy 50 pack of 1915A



1902

Full Chair Protectors

Reduce the risk of cross-contamination. Protects leather, naugahyde and vinyls from long-term use of damaging cleaners and disinfectants. Use in conjunction with our Topcat line of products (see page 62) to extend the life of your equipment. Latex-free. 39" x 84". 175/roll

1902

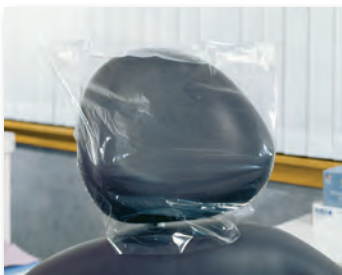


1901

Half Chair Protectors

Covers and protects chair backs, headrest areas and dentist stools. Disposable protectors are convenient and save time between patients. Minimizes the need to apply harsh cleaning chemicals to leather and naugahyde surfaces. Latex-free. 14" x 13¾" x 23". 225/roll

1901



1918A, 1918B

Headrest Protectors

Reduce the risk of cross-contamination. Meet patient expectations for cleanliness. Quick cleanup after every procedure. Latex-free. 250/box

1918A: 11½" x 3" x 8¾"

1918B: 14½" x 3" x 9"

X-Ray Head Protectors

Prevent x-ray equipment from being a source of cross-contamination. Protect equipment from chemicals, oversprays and splatters. Convenient and easy to use. Latex-free. 225/roll

1910: 15" x 26"

1910B: 23" x 28"

1920: Nomad x-ray protector, 10" x 6" x 24". 500/box



1910, 1910B, 1920

Bite BlockTM Protectors

Clear, convenient plastic barriers for use with pano x-ray and Siemens machine bite blocks. Economical way to reduce cross-contamination, eliminating the need for disinfection or sterilization. Latex-free.

1850: Pano 1" x 2". 1000/box

1850S: Siemens 1½" x 3". 500/box



1850, 1850S

Delivery System Protectors

Covers and protects your delivery system from chemicals, oversprays and splatters. Prevents cross-contamination, protecting patients and staff. Latex-free. 19" x 19". 500/box

1911A



1911A

Air/Water Syringe Protectors

Protect non-autoclavable parts from cross-contamination. Easy to apply and dispose. Provides a secure grip. 2½" x 10".

No predesigned opening. Customize to equipment

Latex-free. 500/box

1915



1915

Syringe Tip Covers

Designed to fit virtually all air/water syringes. Easily slides over the existing syringe tip. No need for conversions, modifications or adapters. Aerates water spray without restricting the pattern of air flow. Hub design provides for easy, one-handed tip rotation. Disposable after each patient for quick cleanup. Cost-effective and efficient. Latex-free.

1950: 100/bag

1949: 250/bag

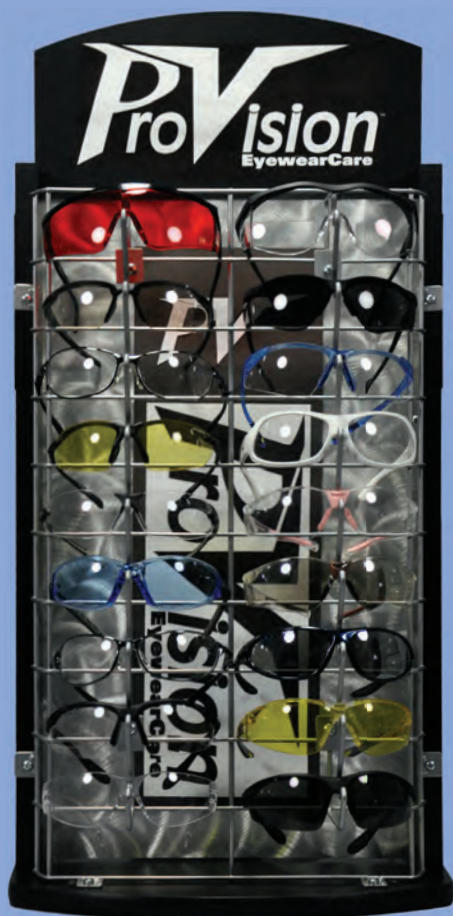


1950, 1949

Protect Your Peepers With Palmero

Eye safety doesn't have to make you look uncool.

Palmero offers an impressively wide range of **cool** eyewear including safety, bonding, disposable and magnifying styles. We also carry accessories like clip-on lights, magnifiers, lens cleaning stations and eyewear disinfecting trays.



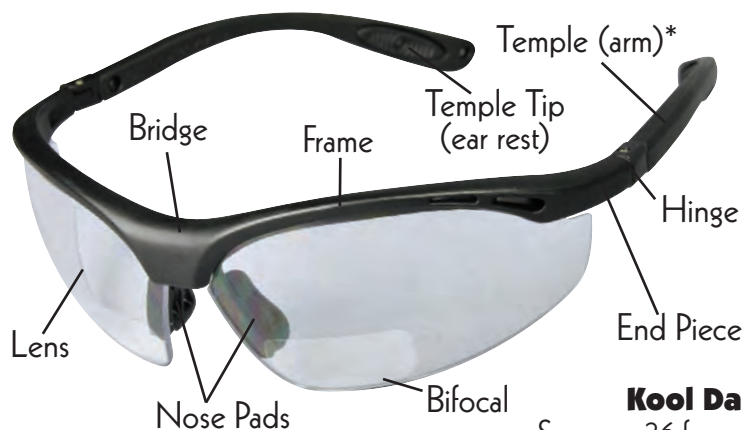
1887: Palmero eyewear display. Rotating base, metal racking and divider. Holds up to 36 pairs of eyewear. Dimensions: 14½" x 14" x 30". Two "modeling" mirrors on either side. Includes display only. Eyewear not included.

To order call: 1-800-344-6424



E
Y
E
W
E
A
R

A guide to eyewear parts and terms



Kool Daddy

See page 36 for our selection of Kool Daddy eyewear

* Palmero sells several eyewear styles. Including features such as telescoping arms (Overshield Eyewear, page 30) to adjust the proper length or ratcheting arms which can be adjusted to the angle to allow for a better fit and comfort.

PALMERO
HEALTH CARE

FB EYE™

3603



3603CB

Blocks up to 95% of UVA and UVB rays. Scratch-resistant and anti-fog coated. Polycarbonate full frame design. Non-slip TPR* nosepiece. Dual-injected non-slip TPR temples. Certified to ANSI Z87.1-2003 (high impact). Available with optional soft foam rubber insert† for added protection and a more comfortable fit.



3603W: White frame/clear lens



Featured above

3603CB: Crystal brown frame/brown lens



3603GM: Gunmetal-black tip frame/smoke lens



3603BP: Barbie pink frame/clear lens



3603IB: Black inserts (eyewear not included. Inserts are optional).



3603IG: Light grey foam rubber insert

* Thermoplastic rubber

† Foam inserts are exclusive to FB EYE eyewear and cannot be combined with other eyewear models.

SPECIAL OPS™

3563



100% visually correct lens. Blocks up to 95% of UVA and UVB rays. Polycarbonate frame design. Scratch-resistant and anti-fog coated. Certified to ANSI Z87.1-2003 (high impact). Non-slip TPR* temple tips. Non-slip TPR nosepiece.



3563WB: Woodland frame/brown lens



3563W: Woodland frame/clear lens



3563GM: Gunmetal frame/black tips/clear lens



Featured above

3563GMS: Gunmetal frame/black tips/
smoke lens

* Thermoplastic rubber

E
Y
E
W
E
A
R

To order call: 1-800-344-6424

WRAP CONS™ 3562



3562M

Dual-injected non-slip TPR* temple tips. Blocks up to 95% of UVA and UVB rays. Hard-coated for scratch resistance. Anti-fog coated. Sleek design. Certified to ANSI Z87.1-2003 (high impact).



3562W: Clear frame/white tips/clear lens



Featured above

3562M: Mocha-mocha tips/clear lens



3562BOND: Stylish, light-curing protection



3562GM: Clear frame/gunmetal tips/clear lens

* Thermoplastic rubber

ANARCHY™

3557



100% visually correct lens. Non-slip TPR* nosepiece. Lens wraps around to cover the temple area. Blocks up to 95% of UVA and UVB rays. Hard coated for scratch resistance. Anti-fog coated. Polycarbonate frame design. Dual-injected polycarbonate/TPR temples. Certified to ANSI Z87.1-2003 (high impact).



3557P: Clear frame/pink tips/clear lens



3557BLT: Clear frame/black tips/
indoor-outdoor lens



3557BL: Clear frame/black tips/clear lens



3557BB: Clear frame/baby blue tips/clear lens

* Thermoplastic rubber

To order call: 1-800-344-6424

PALMERO
HEALTH CARE

E
Y
E
W
E
A
R

ECONO WRAPS™

3601



3601G

Feather-weight, low-cost eye protection that offers a universal fit, superior optical quality and unsurpassed protection. Features a sleek, compact design. Perfect for patient and staff use. Fog-free and scratch-resistant. Blocks up to 95% of UVA and UVB rays. Meets the new ANSI Z87.1-2003 standard. Polycarbonate plastic.



3601G: Grey frame/lens
(featured above)



3601C: Clear frame/lens



3601CB:
10-pack
dispenser
with clear
eyewear

MINI ECONO WRAPS™

3607

Same styling as our Econo Wrap eyewear except with a narrower width for children and adults with smaller faces. Blocks up to 95% of UVA and UVB rays. Meets the new ANSI Z87.1-2003 standard for safety eyewear.



3607C: Clear frame/lens



3607G: Grey frame/lens

VECTOR™

3587



Lightweight and durable metal frame. Wraparound design for total comfort. Spring-hinged temples (arms). Available with black frames in anti-fog coated clear lens or indoor-outdoor scratch-resistant coated lens. Blocks up to 95% of UVA and UVB rays.



3587BL: Black frame/indoor-outdoor lens



3587: Black frame/clear lens
(featured above)



* Eyewear is compatible
with magnifying
Spectacle Loupes.

see page 41 for Magnifying options



E
Y
E
W
E
A
R

WRAPTURE™

3024



3024GM

100% visually correct lens. Blocks over 95% of UVA and UVB rays. Hard-coated for scratch resistance. Anti-fog coated. Frameless design featuring non-slip TPR* temples tips and vented TPR nosepiece.



3024P: Barbie pink frame/clear lens



3024GM: Gunmetal frame/clear lens



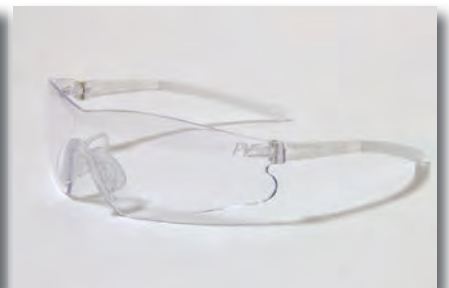
3024CB: Crystal brown frame/clear lens



3024BOND: Light-curing bonding eyewear



3024BL: Crystal black frame/clear lens



3024C: Clear frame/clear lens

* Thermoplastic rubber

APOLLO™

3585



Classic sport design and exceptional optical clarity. Anti-fog coated and scratch-resistant polycarbonate lenses. Over 95% UVA and UVB protection to 385nm. Certified ANSI Z87.1-2003 (high impact).



3585: Black frame/clear lens



3585BL: Black frame/grey lens



3585S: Silver frame/silver mirror lens

E
Y
E
W
E
A
R

To order call: 1-800-344-6424

PALMERO™
HEALTH CARE

SPHERE-X WRAP™



This “EXTREME” eyewear features one of the boldest designs to ever hit the healthcare market. The temples (arms) adjust to four different lengths and the dual lens construction allows for the best possible peripheral vision available. Fog-free and scratch-resistant. Blocks up to 95% of UVA and UVB rays. Meets the new ANSI Z87.1-2003 standard for safety eyewear.



3707: Black frame/clear lens



3708: Platinum frame/clear lens

MINIWRAP™

While Supplies Last

A scaled-down version of a popular style, made to provide a much better fit for children or adults with smaller facial features. Adjustable temples and a universal nose bridge add to the comfort of this superb eyewear. Blocks up to 95% of UVA and UVB rays. Meets the new ANSI Z87.1-2003 standard for safety eyewear.



3705P: Pink frame/clear lens

END-FOG

3556



3556R

A cost-effective solution to your protective eyewear needs. Extra anti-fog coating sets End-Fog apart from other economy eyewear. Features a secure snug fit and optically correct, crystal-clear lenses for those special procedures. Blocks up to 95% of UVA and UVB rays. Meets the new ANSI Z87.1-2003 standard for safety eyewear.



3556B: Blue frame/clear lens



3556C: Clear frame/clear lens



Featured above

3556R: Red frame/clear lens



3556P: Purple frame/clear lens

E
Y
E
W
E
A
R

To order call: 1-800-344-6424

VENUS™ 3580



Designed to provide a fashionable look for women requiring safety eyewear. Features a square, classy sophisticated frame. Available in white frame/clear lens or black frame/grey lens. Anti-fog coated polycarbonate lenses. Over 95% UVA and UVB protection. Certified ANSI Z87.1-2003 (high impact) and CSA Z94.3-2007.



Featured above

3580BL: Black frame/grey lens

CHIC™

3760



3760AG

Designed to fit smaller, more narrow facial structure. Mono-lens construction with wraparound lens. Colorful rubber tipped temples and a soft rubber nose bridge. Blocks up to 95% of UVA and UVB rays.

E
Y
E
W
E
A
R



3760CP: Clear frame/pink tips/clear lens



3760IOW: Clear frame/white tips/
indoor-outdoor lens



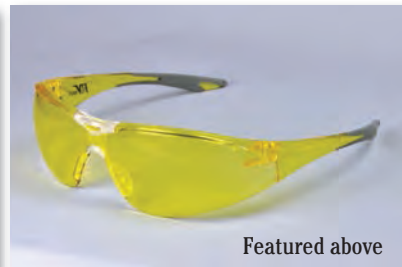
3760CG: Clear frame/green tips/
clear lens



3760CW: Clear frame/white tips/clear lens



3760IOP: Clear frame/pink tips/
indoor-outdoor lens



Featured above

3760AG: Amber frame/grey tips/amber lens

To order call: 1-800-344-6424

PALMERO™
HEALTH CARE

DIABLOS™ 3575SM



3575SM:
Smoke and black frame/
clear lens

Soft, secure fit nosepiece and ear tips. Special titanium lens coating enhances optical comfort. Over 95% UVA and UVB protection. Certified ANSI Z87.1-2003 and CSA Z94.3-2007.

FLARE™ 3750

Sleek, comfortable and economical. Lightweight frame fits against the nose and ears with soft rubber pads. Stylish color temples add flair. Polycarbonate lenses offer great coverage but won't crowd eyelashes, with over 95% UVA and UVB protection. Soft rubber nose bridge and temple tips. Anti-fog coated lens. Complies with ANSI Z87.1-2003.



3750GY: Grey lens/yellow tips



3750IOB: Indoor-outdoor lens/
burgundy tips



3750CB: Clear lens/blue tips

PREDATOR™

3586



Sleek, protective design. Spring-hinged temples. Soft tip temple and nosepiece add increased comfort. Over 95% UVA and UVB protection. Certified ANSI Z87.1-2003 (high impact).



3586ESP: Blue marble frame/espresso lens



3586MIR: Blue marble frame/
silver mirror lens

SHADOWS™

3576PL

Compact, ultra-lightweight frame for extended wear. Universal gel nose bridge for total comfort. Ratcheting temples* to fit all faces. 9.5 base curve lens. High-impact, scratch-resistant polycarbonate lenses. Over 95% UVA and UVB protection. Certified ANSI Z87.1-2003 (high impact).



3576PL: Black frame/platinum trim/clear lens

* Adjusts the angle of the temples (arms) for more comfort and a better fit.

E
Y
E
W
E
A
R

To order call: 1-800-344-6424

CONTOUR WRAPS™



3550

Offering style, comfort and adjustability at an extremely affordable price. A lightweight polycarbonate frame and telescoping arms ensure a great fit. Fog-free and scratch-resistant. Safety and style have a new name... Contour Wrap eyewear! Blocks up to 95% of UVA and UVB rays. Meets the new ANSI Z87.1-2003 standard for safety eyewear. Not polarized.



Featured above

3550: Black-grey frame/ice blue lens



3552: Black frame/grey lens



3553: Black frame/clear lens

SEE-BREEZ

EYEWEAR



3561BL

Ultra-lightweight frames with sculpted dual lenses and telescoping arms ensure that these are the most comfortable fitting eyewear you will ever experience. **They are also great for children or adults with smaller faces.** Completely fog-free (even with a mask on), scratch-resistant and adjustable. Blocks up to 95% of UVA and UVB rays. Meets the new ANSI Z87.1-2003 standard for safety eyewear.



3560BL: Black frame/clear lens



3560B: Blue frame/clear lens



3560R: Replacement lens/clear



Featured above

3561BL: Black frame/grey lens



3560PL: Platinum frame/clear lens



3561R: Replacement lens/grey

To order call: 1-800-344-6424



EYESAVERS™



18S

Economical, durable “no-frills” eye protection that features an ultra-light frame. Blocks up to 95% of UVA and UVB rays. Meets the new ANSI Z87.1-2003 standard for safety. Impact-resistant polycarbonate lenses. Hinged temples allow for convenient storage when not in use.



19S: All yellow, 3S: All grey,
18S: All green, 17S: All clear



1869: Eyewear Disinfecting Tray
with EyeSavers Eyewear*

1869B: Eyewear Disinfecting
Tray without eyewear

(Fog Free)

*1869: This system contains four pairs of clear EyeSavers, two holding racks and a clear plastic tub with a lid. It may also be used as a storage container for eyewear while not in use. Manufacturer recommends DisAseptic® XRQ (see page 5) for eyewear decontamination. Holding rack dimensions: 7¼" x 9" x 3"

Racks and eyewear fit inside plastic tub for disinfectant bath. Use one holding rack for immersion into disinfectant bath and the other for drying. Rotate eyewear in and out of the disinfectant bath throughout the day to maintain proper disinfection levels and keep eyewear ready for use.



1968: 10-Pack
Dispenser

(see page 46)
for details

VERSI OVERSHIELDS 3743



3743:
Lightly-tinted grey frame/
black tips/clear lens

This frame is designed to be less bulky than traditional frames. Versatile. Can fit over prescription glasses but can also be worn as stand-alone safety eyewear. Equipped with small side windows and soft rubber temples. Clear, hard-coated polycarbonate lens. Blocks up to 95% of UVA and UVB rays.

OVERSHIELD™ EYEWEAR

3602



3602

Specially designed to wear over prescription eyewear, OverShield's impact-resistant, one-piece polycarbonate lens with integral sideshields wraps around for a wide field of vision and complete protection. Telescoping and ratcheting arms* ensure a great fit no matter what size your prescription frames. Lightweight and comfortable. Blocks up to 95% of UVA and UVB rays. Meets the new ANSI Z87.1-2003 standard for safety eyewear.



Featured above

3602: Black frame/clear lens



3602BOND: Black frame/bond lens

* Adjusts the angle of the temples (arms) for more comfort and a better fit.

OASIS™

3570

Attractive over-the-glass style. Fits over most prescription eyewear. High-impact polycarbonate lenses with built-in side shield. Anti-fog coated lens. Blocks up to 95% of UVA and UVB rays. Certified ANSI Z87.1-2003 (high impact) and CSA Z94.3-2007.



3570C: Clear frame/clear lens



3570BOND: Oasis bonding eyewear/
reddish-orange lens*

* Filters over 95% of blue and UV light.

E
Y
E
W
E
A
R

VERRAY EYEWEAR



Contemporary 21st century technology is cleverly incorporated into this classically stylish eyewear! VerRay offers all the features you would expect in safety eyewear. Totally fog-free (even with a mask on), scratch-resistant, ultra-lightweight, comfortable and fully adjustable (lens pivots and arms telescope). Quality and style combined at an extremely economical price. Blocks up to 95% of UVA and UVB rays. Meets the new ANSI Z87.1-2003 standard for safety eyewear.

**While
Supplies
Last**

Discontinued



3558: Black frame/grey lens



3554O: Orange frame/clear lens



3554G: Gold frame/clear lens



3555RC: Replacement lens/clear



Featured above

3554R: Red frame/clear lens



3558R: Replacement lens/grey

TECH SPECS™ Safety and Bifocal



This eyewear has exceptional styling in a lightweight design that provides excellent protection and comfort. “Hugs” the face with its CONTOURED design and rubberized (non-latex) attachments on the nosepiece and ear rests. Fog-free and scratch-resistant. Blocks up to 95% of UVA and UVB rays. Meets the new ANSI Z87.1-2003 standard for safety eyewear.



3710C: Grey frame/clear lens



3711C: Blue frame/clear lens



Featured above

3710G: Grey frame/grey lens



3712: Grey frame/bonding UV protective lens



3720: Bifocal series: Grey frame/clear lens

- 3720A: 1.0 diopter
- 3720B: 1.5 diopter
- 3720C: 2.0 diopter
- 3720D: 2.5 diopter
- 3720E: 3.0 diopter

Diopter*	Focal length
1.0	39"
1.5	26"
2.0	20"
2.5	16"
3.0	13"

*See glossary

To order call: 1-800-344-6424



E
Y
E
W
E
A
R

BAD DOGS™ Safety and Bifocal



3622

Wraparound lens provides an uninterrupted peripheral view while providing ultimate protection. Featherweight, fog-free and scratch-resistant. Blocks up to 95% of UVA and UVB rays. Meets the new ANSI Z87.1-2003 standard for safety eyewear. Polycarbonate lens and temples are impact-resistant but not unbreakable.



3620: Clear frame/clear lens



3623: Yellow frame/yellow lens



3621: Clear frame/indoor-outdoor lens



3620BOND B: Bonding bifocal/1.5 diopter*
3620BOND C: Bonding bifocal/2.0 diopter*
3620BOND D: Bonding bifocal/2.5 diopter*



Featured above

3622: Grey frame/grey lens



3620B: Bifocal, clear frame/clear lens/1.5 diopter
3620C: Bifocal, clear frame/clear lens/2.0 diopter
3620D: Bifocal, clear frame/clear lens/2.5 diopter

GEMINI™ Bifocal

3721



Allows for comfortable viewing of the smallest detail. No interference with long-distance viewing. Wraparound lens offers a close and comfortable fit. Integrated rubber bridge, temple tip and nose bridge. Lightweight, low-profile design for all-day wearing. Anti-fog coated lens. Blocks up to 95% of UVA and UVB rays. Meets the ANSI Z87.1-2003 standard for safety eyewear.



Grey frame/burgundy tip/ grey lens

Available:

3721GB: 1.5 diopter
3721GC: 2.0 diopter
3721GD: 2.5 diopter



Featured above

Grey frame/burgundy tip/clear lens

Available:

3721CB: 1.5 diopter
3721CC: 2.0 diopter
3721CD: 2.5 diopter

PROVISION Bifocal

3701

Totally fog-free (even with a mask on) dual curvature mono-lens with integrated side shields, scratch-resistant, ultra-lightweight, comfortable and fully adjustable (lens pivots and arms telescope). Quality and style combined at an extremely economical price. Blocks up to 95% of UVA and UVB rays. Meets the new ANSI Z87.1-2003 standard for safety eyewear. Black frame/clear lens.



3701A: 1.0 diopter

Available:

3701A: 1.0 diopter
3701B: 1.5 diopter
3701C: 2.0 diopter
3701D: 2.5 diopter
3701E: 3.0 diopter

To order call: 1-800-344-6424

KOOL DADDY™ Bifocal



3746B

Combines a protective safety glass with the magnification you need by molding a bifocal directly into the polycarbonate lens. Lightweight nylon frame, high-tech vented rubber nosepiece and cushioned non-slip temple pads make this eyewear extremely comfortable. Fog-free and scratch-resistant. Each pair of Kool Daddy's comes with a slip-on neoprene protective sleeve with a heavy-duty belt clip.* Meets the new ANSI Z87.1-2003 standard. Grey and indoor-outdoor lens eyewear provides up to 95% UVA and UVB protection.



3740A: Black frame/clear lens/1.0 diopter
3740B: Black frame/clear lens/1.5 diopter
3740C: Black frame/clear lens/2.0 diopter
3740D: Black frame/clear lens/2.5 diopter
3740E: Black frame/clear lens/3.0 diopter



3745B: Black frame/grey lens/1.5 diopter
3745C: Black frame/grey lens/2.0 diopter
3745D: Black frame/grey lens/2.5 diopter



*Kool Daddy slip-on neoprene protective sleeve and belt clip.



Featured above

Black frame/indoor-outdoor lens:
3746B: 1.5 diopter
3746C: 2.0 diopter
3746D: 2.5 diopter

COOL WRAPS™ Bifocal

3730



Detail of bifocal lens

Available in:
 3730A: 1.0 diopter
 3730B: 1.5 diopter
 3730C: 2.0 diopter
 3730D: 2.5 diopter
 3730E: 3.0 diopter

The “coolest” magnifying eyewear you will ever own! Simple, lightweight design is the ultimate in comfort and wearability. The unique wraparound design also makes them perfect for people with smaller framed faces. Fog-free and scratch-resistant. Blocks up to 95% of UVA and UVB rays. Meets the new ANSI Z87.1-2003 standard. Clear frame/lens.

SPORTIN Bifocal

3731

Great style and comfortable to wear with exceptional coverage and protection. Soft rubber nose bridge and temple inserts. Blocks up to 95% of UVA and UVB rays. Complies with ANSI Z87.1-2003 (Z87+). Bronze-color frame/clear lens.



Available in:
 3731A: 1.0 diopter
 3731B: 1.5 diopter
 3731C: 2.0 diopter
 3731D: 2.5 diopter
 3731E: 3.0 diopter

E
Y
E
W
E
A
R

To order call: 1-800-344-6424

DYNAMIC DISPOSABLES™

3900

Dynamic Disposables™

Latex-free/Assorted colors

Convenient, cost-effective alternative eye protection. OSHA blood-borne pathogen standard compliance. Fog-free, anti-glare, anti-static and optically clear. Reusable frames reduce costs. Economical and easy to use. Can be worn over prescription eyewear.

3900: Office Pack - 10 frames, 20 clear lenses and 1 cord

Also available:

3901: Replacement frames - 10 pack

3902: Replacement lens clear - 100 pack

3903: Replacement lens clear - 25 pack

3904: Eyewear cords - 5 pack

3905: Replacement lens grey - 25 pack

3905B: Replacement lens grey - 100 pack

3906: Replacement lens bonding - 10 pack

3906B: Replacement lens bonding - 100 pack

3908: Value pack - 25 black frames, 100 clear lenses and 5 cords



3900 series



*Lens snap on to frame

3901

Stickeeز™

Latex-free

Unique eyewear providing instant, press-on splash protection. A medical-grade adhesive sticks to temple areas comfortably or can be used as a protective covering on safety or prescription eyewear. Light, thin and fog-free. Inexpensive and disposable for frequent changes. Can be custom-cut with scissors for a better fit. Reduces exposure to bacteria and blood-borne pathogens.

3911: 25 pack

3911A: 50 pack



3911, 3911A

Face Shields

Disposable, lightweight face shields offer complete facial coverage that protects the eyes, nose and mouth from aerosols, sprays and splatters. Full face shield covers below the chin, approximately 8" in length. Half face shields covers to below the nose, approximately 6" in length. With a snug fitting, soft elastic band and a foam forehead band, the shield offers the ultimate in comfort. Latex-free.

1964: Disposable full face shields - 24/box

1966: Disposable half face shields - 24/box



1964, 1966

BONDING EYEWEAR



Bond Wrapture™

Impact- and stress-resistant material. Comfortable lightweight design and rubberized nosepiece. Durable, scratch-resistant, filters over 95% of blue and UV light. Fog-free. Meets the ANSI Z87.1-2003 standard for safety eyewear.

3024BOND



3600

Bonding Wraps™

Extremely comfortable, lightweight, durable and economical eyewear with sleek styling and a close fit for maximum protection from blue, UVA and UVB light frequencies. Meets the ANSI Z87.1-2003 standard for safety eyewear.

3600



3906: 10-pack replacement lenses

3906B: 100-pack replacement lenses



3901

Dynamic Disposable™

Bonding Frames and Lenses

Frames are ergonomically engineered to fit flush to the forehead and wrap around the head for a secure fit. Will not slide off. Can be worn over prescription glasses. OSHA-compliant. Clinically proven protection from blue light frequencies used in dental bonding and bleaching procedures.

3901: 10-pack frames



3602CLIPON

Clipon Bond

Have all the protective features of our other bonding eyewear. Clip onto your existing eyewear. Filters over 95% of blue, UVA and UVB light. Meets the ANSI Z87.1-2003 standard for safety eyewear.

3602CLIPON



3562BOND

Bond WrapCons™

100% visually correct lens. Filters over 95% of blue, UVA and UVB light. Scratch-resistant and anti-fog coated. Modern, free-flowing design. Dual-injected non-slip TPR temple tips. Meets the ANSI Z87.1-2003 standard for safety eyewear.

3562BOND



3570BOND

Bond Oasis™

Attractive over-the-glasses style with high-impact, scratch-resistant polycarbonate lenses and built-in side shields that fits over most prescription eyewear. Filters over 95% of blue, UVA and UVB light. Meets the ANSI Z87.1-2003 standard for safety eyewear.

3570BOND

E
Y
E
W
E
A
R

To order call: 1-800-344-6424



BONDING EYEWEAR

Econo Bonding

One piece plastic lens design with detached side shields. Optically correct, non-distorting and lightweight while providing a secure fit. Filters over 95% of blue, UVA and UVB light. Perfect for use as overglasses. Impact- and stress-resistant material. Meets the ANSI Z87.1-2003 standard for safety eyewear.

1100



1100

Bond Bad Dogs™

Lightweight, low-profile design provides frameless, wraparound comfort. Filters over 95% of blue, UVA and UVB light. High-impact, anti-fog coated polycarbonate lenses. Meets ANSI Z87.1-2003 (high impact) and CSA Z94.3-2007 standards.

3620BOND B: 1.5 diopter

3620BOND C: 2.0 diopter

3620BOND D: 2.5 diopter



3620BOND B, C, D

Specs™ Bonding

Durable, stylish and constructed of an impact- and stress-resistant material. Scratch-resistant and fog free. Filters over 95% of blue, UVA and UVB light. Extremely comfortable to wear with a lightweight design and rubberized nosepiece.

Meets the ANSI Z87.1-2003 standard for safety eyewear.

3712



3712

Bond OverBond™

Same style as the clear Overshield Eyewear but with an orange lens that filters out up to 95% of blue, UVA and UVB light. Can be used over prescription eyewear. Constructed of an impact- and stress-resistant material. Meets the ANSI Z87.1-2003 standard. (See page 31 for full Overshield product description.)

3602BOND



3602BOND

Bonding Lens Shield

3" diameter

Easily adapts to most pistol or wand type VLCs (visible light cure) to help protect eyes from the harmful blue light used in curing and bleaching procedures. Constructed of an unbreakable polycarbonate with a protection of 530nm.

125



125

LASER EYEWEAR



3588DA

DIODE ALEXANDRITE MODEL, SILVER AND BLACK FRAMES WITH GREEN POLYCARBONATE FILTER LENS. Optical Density >5+ FROM 800-980nm; VISIBLE LIGHT TRANSMISSION 50%. Meets ANSI Z87-1 AND Z136.1 Standard for laser protection. Rubber nose pad and rubberized temple bars provides comfortable grip while the wrap around design ensures that your eyes are protected. Comes in eyewear case with lanyard.



3589YG

DIODE MODEL, BLACK AND YELLOW WRAP STYLE FRAMES WITH YELLOW/GREEN POLYCARBONATE FILTER LENS. Optical Density >5+ FROM 800-830nm; VISIBLE LIGHT TRANSMISSION 68%. Meets ANSI Z87-1 AND Z136.1 Standard for laser protection. Rubber nose pad and foam pad insert along brow provides comfortable fit while the wrap around design ensures that your eyes are protected. Comes in eyewear case with lanyard.



3590YG

DIODE MODEL, BLACK UNIFIT WRAP STYLE FRAMES WITH YELLOW/GREEN POLYCARBONATE FILTER LENS. Optical Density >5+ FROM 800-830nm; VISIBLE LIGHT TRANSMISSION 68%. Meets ANSI Z87-1 AND Z136.1 Standard for laser protection. Rubber nose pad and lightweight uniframe nylon frame with the wrap around design ensures that your eyes are protected. Comes in eyewear case with lanyard.

MAGNIFICATION ITEMS

Magnifying Headband Loupes

Adjustable, lightweight foam-cushioned headband. Plastic scratch-resistant lens attached. Lens swings up when not needed. Can be used with or without glasses.

Headband Loupes are available in the following models:

ED2: 20" focal range/1.5 X	ED5: 8" focal range/2.25 X
ED3: 14" focal range/1.75 X	ED7: 6" focal range/2.75 X



ED2, ED3, ED5, ED7

Magnifying Spectacle Loupes

Clips onto a variety of eyeglasses. Optically correct with a lightweight lens holding arm. Swings easily up or down. Recommend using Eyewear 3587 (page 19) for compatibility.

Spectacle Loupes are available in the following models:

712: 20" focal range/1.5 X	715: 8" focal range/2.25 X
713: 14" focal range/1.75 X	717: 6" focal range/2.75 X



712, 713, 715, 717

Magni-Focuser

Focus on objects without interference from extraneous light. Adjustable headband. Plastic scratch-resistant lens.

Magni-Focusers are available in the following models:

103: 14" focal range/1.75 X	107: 6" focal range/2.75 X
105: 8" focal range/2.25 X	



103, 105, 107

E
Y
E
W
E
A
R

MAGNIFICATION ITEMS

Attach-A-Mag (Large)

A lighted, fully-adjustable, flexible arm "hands-free" magnifier. Can clamp to most surfaces for convenient hands-free use. Large 2X power lens for sharp, distortion-free view. 4X power spot lens for viewing even the finest details with ease. Three super bright LED lights for use in low-light conditions. Attaches to table, desk or counter edge via screw-type clamp built into base. Clamp fits a thickness of 2" or less.

Package includes 4.5v DC adapter. Can also use 3 AAA batteries (not included). Dimensions: 24" x 4" x 2"

4150



4150

Attach-A-Mag (Small)

A fully adjustable "hands-free," clip-on, rimless magnifier. Includes an interchangeable magnetic base. Large 2X power lens gives you a sharp, distortion-free view of the finest details with ease. Perfect for all work, hobbies and crafts! Soft pouch case included. Attaches to table, desk or counter edge via a clip built into base. Clip can fit a thickness of 2" or less.

4160



4160

Illuminator Rim-Free Magnifier

2X power "designer" magnifier. Built-in LED illumination. Ergonomically designed handle for the ultimate in comfort and viewing convenience. Rimless crystal-clear acrylic lens for a sharp distortion-free view. Bright white LED illumination allows viewing in the dark. The soft pouch (included) protects the lens when not in use. Dimensions: 8" x 3½" x 1". Batteries: Button cell (included)

4170



4170

Magni-Dome

3X power pre-focused polished acrylic ball loupe.

Transparent base that permits ambient light to illuminate the subject for bright, clear viewing. Great for x-rays, coins, stamps, photography and miniatures.

Soft pouch case included. Dimensions: 2¼" x 2" x 1½"

4180



4180

MAGNIFICATION ITEMS



4190

Magni-Visor

"Hands-free," 2X magnifier with an additional 3X, built-in, flip-down lens. Adjustable headband. Perfect for all hobbies and crafts!

Dimensions: 8" x 6½" x 2½"

4190

ILLUMINATION ACCESSORIES



4006, 4007

4000

Bryte-Syte™ Headlights

Aims a bright, white LED light whenever you need it. Made of a flexible, yet durable polypropylene material and has a strong clip to grip whatever surface you attach it to, including eyewear. Perfect for any application in which a little sight assistance is needed.

4000: A stand-alone, wireless unit providing 20+ hours of use and 17 lumens of low-power light with each new battery. Includes a 3-volt CR2032 lithium coin battery. This unit also has optional filters available (purchased separately, see below).

4002: Filter: blue/green curing (for use with 4000)

4004: Filter: red/amber curing (for use with 4000)



4002: Blue/green curing filter*



4004: Red/amber curing filter*

*4002 and 4004 filters prevents the strong LED light from accelerating the cure speed of "light curable" materials. For use with 4000.

4006: Provides 20+ hours of use and 30 lumens of high-power light with each new set of batteries. Package includes 3 AAA batteries. Available in clip-on style. Wires and battery pack permanently attached.

4007: (not shown) Provides a cool, bright, white, high-power light when a small, focused beam is needed. Includes 3 AA batteries, Velcro strap to secure cord to the frame of your eyewear and optional adhesive-backed clip to secure battery pack to belt. Similar to 4006 but can disconnect from battery pack.

E
Y
E
W
E
A
R

ILLUMINATION

ProVision Cliquelights

Convenient LED lights attach easily to eyewear frames. Compact and lightweight for comfortable fit. Rotates 360° for more precision. Equivalent brightness 40w, high brightness LED 6000 mcd.† On/off button increases battery life. Contents: 2 LED attachable lights plus 2 additional sets of button cell batteries included.

3640



3640
Eyewear not included



High Power Headband Headlight

No lengthy wires, no bulbs, no plugs. Just bright, white LED light whenever you need it. Crown and lateral headbands are adjustable for a comfortable fit. Cushions on front are genuine leather with snaps for easy cleaning. Provides 20+ hours of use and 30 lumens of light with each new set of batteries.

Includes 3 AAA batteries

4008



Bryte-Syte Clip-On Ear Light

The Ear Light easily slips over the ear for hands-free lighting. The rotating light and earpiece can then be positioned wherever needed. LED light lasts over 100,000 hours and runs on two button cell batteries (included). Battery set lasts 12 hours and produces 17 lumens of light.

4015



4015



EYEWEAR ACCESSORIES



3913
(eyewear not included)

Economy Eyewear Cords

Eliminate lost time searching for misplaced eyewear. Allows eyewear to hang conveniently around neck when not in use. Made from a flexible plastic material which holds eyewear securely. Cords will break away if pulled forcefully to prevent injury. Economical and disposable.

3913: 10 cords/package 24" length cord



3904
(eyewear not included)

Dynamic Disposable Eyewear Cords

Eliminate lost time searching for misplaced eyewear. Allows eyewear to hang conveniently around neck when not in use. Classic string style. Holds eyewear securely.

3904: 5 cords/package 24" length cord



3610, 3611, 3612
(eyewear not included)

Side Shields

Easily add much needed protection to your existing prescription eyewear. Just attach shields to the arms of your frame and your glasses become safety eyewear. Impact-resistant but not unbreakable (will not protect against severe impact hazards or chemical splash). Quick and easy to apply on virtually any frame.

- 3610: Screw-on shields
- 3611: Slip-on rigid plastic shields
- 3612: Slip-on flexible plastic shields



3535

Lens Cleaning Station

Designed to be easily accessible for cleaning eyewear, the lens cleaning station can be placed on a table, desk or counter or mounted on the wall (hardware not included). Contains an 8 oz. pump spray bottle of the specially formulated liquid identical to the optical cleaning wipes. The station also contains 600 optical equipment dry wipes. 7¾" x 8" x 5"

3535

E
Y
E
W
E
A
R

10-Pack Clear Eyewear Dispenser

10 pairs of the economical, durable, clear eyewear in a convenient wall-mountable dispenser (hardware not included).

1968: Eyesavers 10 pack with dispenser (see more Eyesavers eyewear on page 30)

3601CB: Econo-Wrap 10 pack with dispenser (see more Econo-Wrap eyewear on page 18)



1968



3601CB

Eyewear Stand

The perfect accessory to help protect and keep your eyewear close at hand. Made of clear, sturdy plexiglass to hold up to 6 pairs of eyewear on a 14" vertical bar. Base is 5" sq. Includes 6 clips for holding eyewear.

1870



1870
(eyewear not included)

ProVision Crystal Clear Optical Cleaning Wipes

Convenient wipes premoistened with anti-fog, anti-static lens cleaning and polishing solution. Cleans dirt, grease, oils and blood-borne pathogens from eyewear. 160 count canister. 6" x 6¾" wipes.

3534



3534

Eyewear Disinfecting Tray

Contains four pairs of clear EyeSavers eyewear, two white holding racks (one for immersion into disinfectant, one for drying), and one tub with lid. It may also be used as a storage container for eyewear while not in use. Manufacturer recommends the use of DisAseptic® XRQ for eyewear decontamination. 7¼" x 9" x 3"

1869

Also available:

1869B: Includes everything described in 1869 except eyewear.

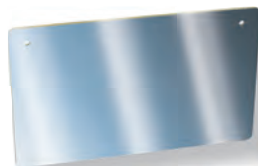


1869: Eyewear Disinfecting Tray with EyeSavers Eyewear (see page 30)

1869B: Eyewear Disinfecting Tray without eyewear

Flip View Mirrors

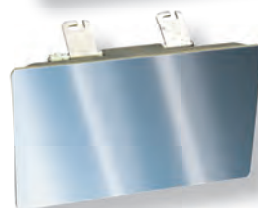
Unbreakable mirror can be easily mounted to a wide variety of dental operatory light systems. Our superior mirror pivots to best viewing angle and will not block the light or obstruct vision during procedures. Can also pivot to display the final results to the patient. Easily cleaned and disinfected to meet OSHA standards. We recommend ProVision Crystal Clear wipes (page 46) and the ProVision Lens Cleaning Station (page 45) for quick cleaning touch-ups. For added protection, use Glass-Glo (page 64).



499R:
Replacement
mirror only



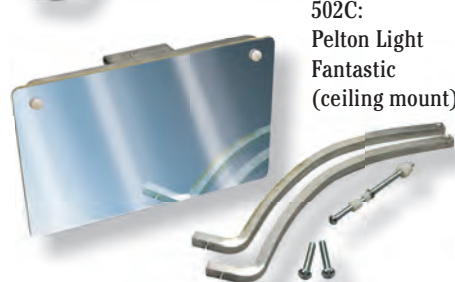
499RU:
Replacement
mirror only
for Universal



500:
Pelton Light
Fantastic I



501P:
Pelton Light
Fantastic II
(post mount)



502C:
Pelton Light
Fantastic
(ceiling mount)



504:
Healthco Aristocrat,
Celebrity and X-calibur



503C:
A-dec Cascade
(1993 or later),
Performa, Radius
and Midmark



503A:
A-dec (November
1987 - 1993)



514:
Belmont No. 046 (unit mount)
Belmont No. 047 (ceiling mount)
Belmont No. 048 (track mount)
Belmont No. 049 (power wall mount)



518: Schein Marus (chrome handles)

Disposable Mouth Mirrors

Clear, distortion-free mirrors and an ergonomic handle with cheek-retracting strength. Ultra-thin reflecting surface for enhanced imaging. Ideal for high-volume offices where interim sterilization is not practical. $\frac{7}{8}$ " diameter.



93

93: 72/box

Hand Mirror

Double-sided hand mirror. A standard mirror on one side and a 2X magnifying mirror on the flip side for close-up viewing. The handle is made of a clear, durable plastic. 5" diameter.



45

45: 1 hand mirror (large)

To order call: 1-800-344-6424

Keep your patients smiling.



Cling-Shield™ X-Ray Aprons

Palmero isn't satisfied simply keeping patients safe during x-rays. We want them happy and calm. That's why we make our aprons by hand in a wide range of cheerful, calming colors and styles. And they are FDA-approved!

Our patented Cling-Shield™ uses medical-grade, textured vinyl backing that clings in place ensuring coverage by preventing slippage.

Each apron is made in the United States and is individually handcrafted. Our aprons are strong and durable, yet also flexible and comfortable for daily use.

Vinyl aprons can be cleaned and disinfected with DisCide® Ultra Disinfecting Towelettes or sprays (page 4) and will not deteriorate or fade.

For proper storage we recommend using our apron hangers (page 53).

Available Silk Screen
Facings Designs



27BEAR



27TOOTH



27HAPPYFACE



27

CLING SHIELD™

Petite/Child Protectall Apron

Neck collar permanently attached. Covers from thyroid to below the gonadal area. Sized for petite adults or children. Velcro clasp on neck collar. Loops attached for easy hanging and storage. 20" x 20"

Product No.	Type	Weight
27	Dental .3mm	4 lbs.
27M	Medical .5mm	7 lbs.
27U	Unleaded	3 lbs.

Also available: Silk Screen Facings: 27BEAR (prints black on white vinyl), 27TOOTH (prints blue on white vinyl). For Medical Silk Screen Facings use Product No. "27MBEAR" or "27MTOOTH." For unleaded style, use Product No. "27UBEAR" or "27UTOOTH." *Available in all colors and Silk Screen Facings. See page 52.



24

CLING SHIELD™

Adult Protectall Apron

Neck collar permanently attached. Covers from thyroid to below the gonadal area. Velcro clasp on neck collar. Loops attached for easy hanging and storage. 22¼" x 25½"

Product No.	Type	Weight
24	Dental .3mm	6 lbs.
24M	Medical .5mm	12 lbs.
24U	Unleaded	5 lbs.

*Available in all colors and Silk Screen Facings. See page 52.



20

CLING SHIELD™ Adult Patient Apron

Covers from over the shoulders to below the gonadal area. Loops attached for easy hanging and storage. 22¼" x 24¼"

Product No.	Type	Weight
20	Dental .3mm	5 lbs.
20M	Medical .5mm	8 lbs.
20U	Unleaded	4 lbs.

*Available in all colors and Silk Screen Facings. See page 52.



22

CLING SHIELD™

Petite/Child Patient Apron

Covers from over shoulders to below the gonadal area. Loops attached for easy hanging and storage. 20" x 19½"

Product No.	Type	Weight
22	Dental .3mm	4 lbs.
22M	Medical .5mm	7 lbs.
22U	Unleaded	3 lbs.

*Available in all colors and Silk Screen Facings. See page 52.

X - R A Y A P R O N S

CLING SHIELD™ Lap Apron

Covers pelvic and gonadal area. Extra long straps can be tied in the front or back. 24" x 18½"

Product No.	Type	Weight
35L	Dental .3mm	4 lbs.
35LM	Medical .5mm	4.5 lbs.
35LU	Unleaded	2.5 lbs.

*Available in all colors. See page 52. Not available in Silk Screen Facings.



35L

CLING SHIELD™

Pano-Adult Dual Apron

Covers in front from shoulders to below gonadal area. Back is the same length as front. Velcro clasp at shoulder. 22½" x 26½"

Product No.	Type	Weight
26	Dental .3mm	10 lbs.
26M	Medical .5mm	15 lbs.
26U	Unleaded	8 lbs.

*Available in all colors and Silk Screen Facings. See page 52.



26

CLING SHIELD™

Pano-Petite/Child Dual Apron

Covers in front from shoulders to below gonadal area. Back is the same length as front. Velcro clasp at shoulder. 19⅞" x 19½"

Product No.	Type	Weight
26C	Dental .3mm	9 lbs.
26CM	Medical .5mm	11 lbs.
26CU	Unleaded	7.5 lbs.

*Available in all colors and Silk Screen Facings. See page 52.



26C

CLING SHIELD™

Pano ¾ Deluxe Dual Apron

Covers from shoulders to below gonadal area. Back covers from shoulders to mid-lumbar area. Velcro closing for easy size adjustment. 22½" x 30"

Product No.	Type	Weight
23	Dental .3mm	9 lbs.
23M	Medical .5mm	11 lbs.
23U	Unleaded	7.5 lbs.

*Available in all colors. See page 52. Not available in Silk Screen Facings.



23





29

CLING SHIELD™ Pano-Cape Apron

Lays over the shoulders, partially down the front and back with Velcro closure on either front or back. Loops attached for easy hanging and storage. 23½" x 7½"

Product No.	Type	Weight
29	Dental .3mm	4 lbs.
29M	Medical .5mm	4.5 lbs.
29U	Unleaded	2.5 lbs.

*Available in all colors. See page 52. Not available in Silk Screen Facings.



29S

CLING SHIELD™ Pano-Stole Apron

Lays over the shoulders to mid-thorax area in front. Back attaches with crisscross Velcro fasteners for easy size adjustment. 30" x 12½"

Product No.	Type	Weight
29S	Dental .3mm	4 lbs.
29SM	Medical .5mm	4.5 lbs.
29SU	Unleaded	2.5 lbs.

*Available in all colors. See page 52. Not available in Silk Screen Facings.



25



25C: Cling Shield
Petite/Child
Neck Collar*
17" x 4"

CLING SHIELD™ Neck Collar

For the protection of the thyroid area. Velcro closing. One size fits all. Use in conjunction with Adult Patient Apron (page 49). 22⅝" x 4¼". Not available in Silk Screen Facings.

Product No.	Type	Weight
25	Dental .3mm	1 lb.
25M	Medical .5mm	1.5 lbs.
25U	Unleaded	9 oz.
25C	Child Dental .3mm	1 lb.
25CM	Child Medical .5mm	1.5 lbs.
25CU	Child Unleaded	9 oz.

*Available in all colors. See page 52. Not available in Silk Screen Facings but can be ordered with a blue & white stripe.

*For children or petite adults. Order C Version:



21

CLING SHIELD™ Tech Apron

Covers and protects technician from shoulders to below the knees. Ties behind neck and waist straps wrap around the back and tie in front of tech's waist. 23⅞" x 35"

Product No.	Type	Weight
21	Dental .3mm	7 lbs.
21M	Medical .5mm	12 lbs.
21U	Unleaded	6 lbs.

*Available in all colors. See page 52. Not available in Silk Screen Facings.

CLING SHIELD™ Coat

Full-length frontal protection. Wraps around back over shoulder blades. Ties at upper and lower back. 23" x 37½". Back is 10" x 17¾"

Product No.	Type	Weight
34	Dental .3mm	8 lbs.
34M	Medical .5mm	12 lbs.
34U	Unleaded	7 lbs.

Available in all colors. See below. Not available in Silk Screen Facings.

34

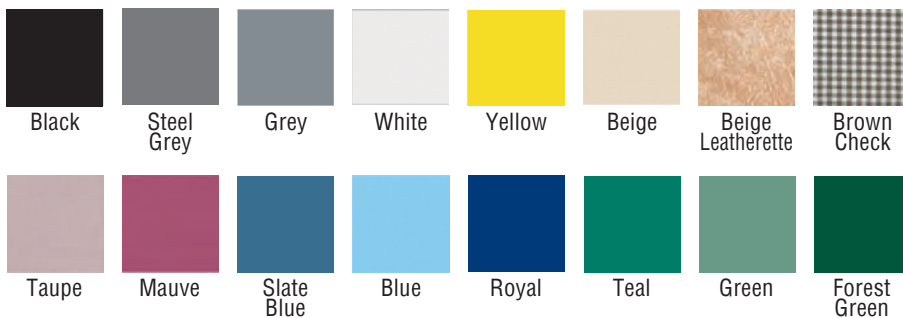


PLEASE NOTE: All sizes and weights may vary slightly. Approximate measurements are from neck to bottom of apron. All styles are available with vinyl or nylon facings. Custom sizes and designs are also available - please inquire. **NYLON APRONS, IMPRINTED APRONS OR CUSTOM APRONS ARE AVAILABLE ON A NO RETURN BASIS ONLY.**

A 20% restocking fee will be applied to all returns. We will not accept returns of any apron after 9 months, except for disposal.

Vinyl Colors

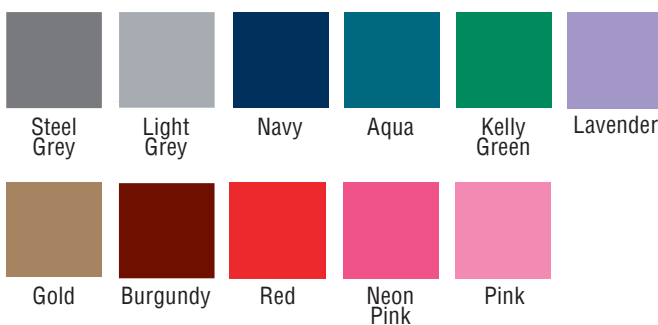
For best results, we recommend that **vinyl aprons only** be cleaned and disinfected with DisCide® Ultra Disinfecting Towelettes or sprays (page 4). We do not recommend the use of any other product.



Vinyl and textured backing is Latex-free

Tough Nylon Colors

Nylon aprons are recommended for non-surgical procedures only. Back side can be cleaned and disinfected but cleaning the front may cause stains.



Please note:
Colors may vary due to differences in fabric lots.

Ordering Instructions: All x-ray protective apparel is available in the colors shown above. When ordering protective x-ray aprons in one of the available colors, simply add the color name to the Product No. without adding any spaces.

Example: To order a medical Cling Shield Adult Protectall in yellow, the complete Product No. would be "24MYELLOW." Two-word colors would follow the same rule. To order the dental Cling Shield Adult Patient Apron in slate blue, the Product No. would be "20SLATEBLUE."

Silk Screen Facings

Available on selected apron styles. See apron product listing for availability.



BEAR
Prints black on white vinyl



TOOTH
Prints blue on white vinyl



HAPPY FACE
Prints blue, yellow and black on white vinyl



28

Standard Apron Hanger

White-coated steel hanger for use with adult and child Patient and Protectall aprons only. Hardware included for hanging. 15" x 2"

28

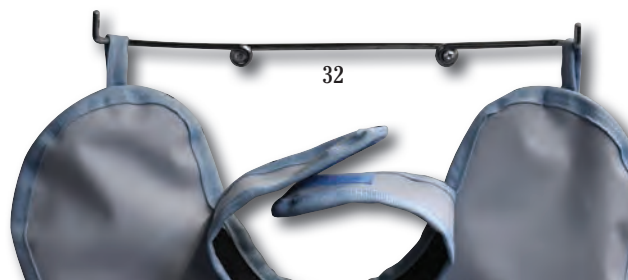


31

Economy Apron Hanger

White-coated steel hanger. Not for use with Dual, Coat or Tech aprons but is a great low-cost option for all of the other aprons. Hardware included for hanging. 15" x 2"

31



32

CC Style Apron Hanger

Sturdy, chrome-coated steel hanger. For use with adult and child Patient and Protectall aprons only. Wall mounting, hardware included. 15"

32

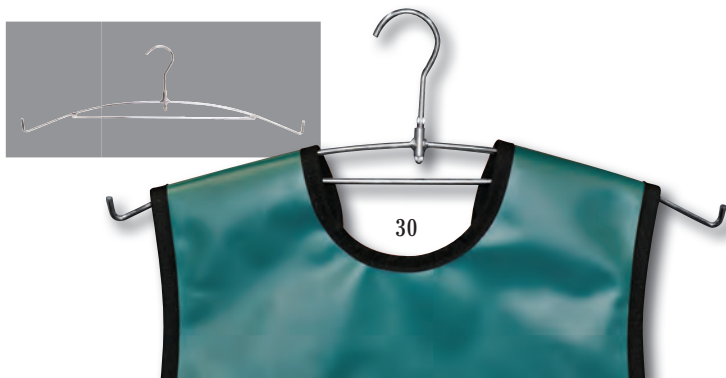


33

Economy X-Ray Apron Hanger

White-coated steel hanger. Can be used with adult and child Patient and Protectall style aprons as well as the Coat and Dual style aprons. 20⁷/₈" x 10¹/₄"

33



30

Deluxe Coat Panoramic Apron Hanger

Sturdy, chrome-coated steel hanger specially constructed for use with panoramic aprons such as Dual and Coat aprons. 21" x 9¹/₄"

30

To order call: 1-800-344-6424

Triple Timer

This electronic timer is great for the operator, darkroom or lab. Three timing ranges (hours, minutes, seconds) can be set simultaneously. Magnetic white. 1 AAA battery included. 3¼" x 2½"

950



950

X-Ray Tank Liner

These heavy-duty tank liners prevent messes when changing solutions. Fits all one gallon tanks with stainless steel inserts (except Rinn 5" x 7"). 18 bags and closures/package.

1504



1504

Pan-O-Marker

This permanent x-ray film marker writes on wet or dry film. Will not wash off or rub off. Three replacement writing tips included.

83



83

(white ink)

Your
vacuum
lines
will
thank
you.



Vacuum Fresh
Vacuum Shock
Vacuum Clean

Palmero's exclusive
cleansing and
deodorizing system is
easy to use, effective
and safe for your
evacuation equipment
and the environment.

See pages 56 and 57 to learn more about our full line of vacuum products.

To order call: 1-800-344-6424



Vacuum Shock™

The first stage in the Palmero 2-step system. Keep vacuum lines clean and extend pump life. Time-released tablet. Economical – use only one tablet every three months. Clinically proven to keep your vacuum lines free of odor-causing bacteria and functioning at peak efficiency. 6 tablets/jar

3546



3546

Vacuum Clean™

The second stage in the Palmero 2-step system. Restores pressure, keeps vacuum lines clean, extends pump life. Economical – use only one tablet each week. Self-activating tablet releases powerful cleaning chemicals throughout the week. Neutral pH helps reduce dispersal of amalgam into sewer systems. Allows consistent vacuum suction and aseptis.

45 tablets/jar

3547



3547

E-VAC System Kit™

Includes one 6-tablet jar of Vacuum Shock and one 45-tablet jar of Vacuum Clean.

3547S



3547S

Vacuum Fresh™

Daily vacuum line cleansing/deodorizing tablet for effective end-of-day cleaning. Biodegradable, non-toxic and non-caustic. Treats cuspidor and evac line and is also safe to use in sinks and toilets to eliminate odors.

20 tablets/container

3548



3548

Pour and Clean Bottle

Measuring container for preparing rinse treatment for the HVE and low-speed lines. Convenient pre-measured compartments, clearly marked for easy mixing and pouring of solution.

Holds 16 oz.

3547P



3547P

Shock, Clean Kit

The one-two punch for evacuation system maintenance, together in one convenient kit. Complete with one jar of Vacuum Shock, one jar of Vacuum Clean and one Pour and Clean bottle for premixing.

3546K



3546K

All of our vacuum system maintenance products, Vacuum Shock, Vacuum Clean and Vacuum Fresh, are designed to work in wet and dry pumps.



35460



3546TK



3559



1805

1806

1807



1602

Shock & Clean Operatory Kit

Cleans and maintains your evacuation system. Helps prevent accumulation of debris and bioburden in the lines which can lead to a loss in pressure and a costly breakdown of the entire system. The powerful formula of Vacuum Shock and Vacuum Clean cleans and decontaminates your evacuation system to keep it running efficiently. Kit includes 6 tubes, each containing 16 Vacuum Clean tablets and 1 Vacuum Shock tablet.

35460

Shock & Clean Trial Kit

Keep your evacuation system running like new with very little effort, time or expense with this trial kit. 1 tube containing 16 Vacuum Clean tablets and 1 Vacuum Shock tablet (approximately 16-week supply).

3546TK

Ultra Super Sonic

Technologically advanced ultrasonic and instrument pre-cleaning tablet. Chemically engineered to achieve maximum instrument cleaning. No mixing required. Tablet is self-dissolving and will ensure proper removal of bacteria, debris and bioburden. Tablets contain antimicrobial and cleaning properties. Tablets do not self-deactivate like enzymes. Non-toxic, non-corrosive, will not rust instruments. 30 tablets/jar.

3559

Evac Screens

Helps avoid contact with potentially hazardous material and reduces the possibility of infection and cross-contamination. Disposable screens color-coded by size and fit. 144 screens/bag.

1805: (blue) 2 1/8" A-dec with plastic canisters

1806: (yellow) 2 1/4" A-dec with metal canisters

1807: (green) 1 7/8" Belmont, Biotec, Chayes, Dentech, DentalEZ, Pelton/Crane, Proma and others

Saliva Ejector Screens

Disposable and aseptic. Keeps debris from being aspirated and lodged in the lines. Universal fit.

1602: 25/bag

1602B: 100/bag

1602A: 50/bag

1602D: 250/bag

1602C: 75/bag

E
V
A
C
U
A
T
I
O
N



We didn't start out to make mixing fun. It just ended up that way.

Palmero takes the drudgery out of mixing alginate, plaster, stone and investment material with **Candeez** bowls. **Candeez** are the right tools, which are easy to grip and clean and optimize your comfort and control.

Candeez bowls are made with pliable PVC for easier and more efficient mixing. The ultra smooth surface allows for void-free mixes and easy cleanup with a damp cloth. Or use Citrisol™ Orange Solvent Towelettes (page 61) for heavier residue.



And don't forget

Our ergonomic spatulas, mixing sticks, scoops and Sure-Sta mixing pads and towelettes.

Candeez. Who knew efficiency could be this much fun?

Candeez™



NEW



1533 Set of 6 medium bowls



1534 Set of 6 large bowls

Set of 6 Candeez
Flexible Mixing Bowls

Buy the whole set! Get one of each color
of our flexible mixing bowls.

Candeez™ Flexible

Mixing Bowls



Manufactured in an extremely pliable PVC that allows for easier and more efficient mixing of impression materials. With a large stabilizing base and an ultra smooth surface. Mixes will be bubble-free. The unique flexible design allows inside-out folding. All bowls can be used with most automatic alginate mixers and are a fun and attractive addition to any dental operator or laboratory. Available in your choice of size and translucent color. Latex-free.

Medium (4" x 2½", volume 350cc):

1530R: Red	1530B: Blue	1530Y: Yellow
1530P: Purple	1530G: Green	1530C: Clear

Large (4½" x 3", volume 600cc):

1531R: Red	1531B: Blue	1531Y: Yellow
1531P: Purple	1531G: Green	1531C: Clear

*Information on Candeez spatulas see page 60

			
			
Bubblegum/Pink	Lime/Green	Mint/Aquamarine	Tangerine/Orange
1532BPS: SET	1532LGS: SET	1532MAS: SET	1532TOS: SET

cented bowl kits include one large and one medium bowl plus a scented ergonomic spatula. (as shown).

Candeez™ Scented Flexible Mixing Bowls

Candeez scented flexible mixing bowls manufactured from the same material as our other flexible mixing bowls with a new twist. Not only are the colors more electrifying but they are scented for the added enjoyment of the staff and patients! Bowls are sold individually. Spatulas are purchased separately. Latex-free. To order a set, see inset box above.

Medium (4" x 2½", volume 350cc):

1530BP: Bubblegum/Pink	1530LG: Lime/Green
1530TO: Tangerine/Orange	1530MA: Mint/Aquamarine

Large (4½" x 3", volume 600cc):

1531BP: Bubblegum/Pink	1531LG: Lime/Green
1531TO: Tangerine/Orange	1531MA: Mint/Aquamarine

Please Note: Bowls are NOT autoclavable.
Spatulas are autoclavable to 270°.



To order call: 1-800-344-6424

PALMERO™
HEALTH CARE

IMPRESSION & CEMENT ACCESSORIES

Candeez™ Scented Ergonomic Spatulas

Sturdy, high-grade polypropylene handle with flexible tip optimizes mixing ability. Perfect for use with alginates, plaster, stone, investments and other impression materials. Autoclavable to 270°. Latex-free. Length 7½"

1520BP: Bubblegum/Pink
1520TO: Tangerine/Orange

1520LG: Lime/Green
1520MA: Mint/Aquamarine



1520BP, 1520TO, 1520LG, 1520MA

Candeez™ Ergonomic Spatulas

Our spatulas are perfect for use with cements, porcelains, acrylics and other materials used in dental operatories and laboratories. They are specially designed for easy mixing and application. Autoclavable to 270°. Latex-free.

7½" Spatulas

1520W: White
1520GY: Grey

1520B: Blue
1520P: Purple

1520M: Mauve
1520Y: Yellow



Spatulas for every fit

1520LW: White (for left hand), length 7½"
1521W: Medium-White, length 9"
1522W: Jumbo-White, length 11"



Straight and Long Handle Alginate Spatulas

1519: Alginate spatula. A plastic / nylon, broad blade spatula with medium flex. Autoclavable to 270°
Latex-free. Length 7½"

1519L: Extra handle length for more control and longer reach. Autoclavable to 270°. Latex-free. Length 11¼"



Candeez™ Mixing Sticks

1517: Mixing stick. Disposable plastic with square and round ends. Autoclavable to 270° Latex-free. Length 4½". 100/bag.

1519A: Cement spatula. Double-ended plastic spatula for easy mixing and applying. Autoclavable to 270°. Latex-free. Length 6¾". Packaged 1/per package.





1525

Double-Sided Measuring Scoop

This double-sided alginate tool is essential for proper measuring, especially when dry and wet ingredients need to be kept separate prior to mixing. Translucent green. Latex-free.

Length 6½". Large scoop: diameter 1¾", height ¾"

Small scoop: diameter ¾", height 1"

1525



1514

Sure-Sta™ Mixing Pads

Featuring a non-skid foam base, these pads won't slip, even when mixing with one hand. The front surface of this high-quality bond paper is laminated, making the pads tear-resistant and impervious to solutions (approximately 70 sheets/pad).

1514A: 3" x 6" (4 pads/bag)

1514AS: 3" x 6" (1 pad/bag)

1514B: 6" x 6" (2 pads/bag)

1514BS: 6" x 6" (1 pad/bag)

1514C: 3" x 3" (8 pads/bag)

1514CS: 3" x 3" (1 pad/bag)

1514D: 6" x 8" (2 pads/bag)

1514DS: 6" x 8" (1 pad/bag)



58

57

Mylar Matrix Strips

Made from DuPont .002 mylar polyester film. Can be used for composite restorations. Far stronger than acetate. 1,000/box.

Size: ¾" x 4", thickness: 5.8 microns.

57: Straight (not contoured)

58: Curved (contoured)



69

Citrisol™ Orange Solvent Towelettes

New and improved!

Two-ply premoistened orange solvent towelettes with lanolin. One side abrasive to loosen dirt and grease, the other side smooth to wipe clean. Quickly removes cements, impression materials, adhesives, grease, oil, gum, tar, shoe scuffs and more from most surfaces found in the dental operator or healthcare environment. Individual towelette sheets: 9½" x 12"

69: 70 count canister

With Our Cat, You Won't Have To Work Like a Dog

There's a TopCat product to meet your every building maintenance chore!

Whichever product you choose, the Topcat line is designed to help you maintain a clean and professional environment, whether it be a healthcare facility, commercial building or just around the house.

Glass-Glo™
Glass Cleaner

Erase-Sure™
Naugahyde Stain Remover

Magic-Clean™
All Purpose Cleaner

Alumina-Brite™
Metal Cleanser/Brightener

Mighty-Mica™
Formica® Cleaner

Toity-Bowl™
Porcelain Bowl & Tile Cleaner

Chair-Guard™
Naugahyde Protectant

Dis-Stain™
Fabric/Carpet Cleaner

Blo-Off™
Compressed Gas Duster

V.L.P.™
Vinyl/Leather Patch

Once-A-Day™
1 Second Spray



TopCat®



3524

Topcat™ Toity-Bowl & Tile Cleaner

A ready-to-use, high-foaming clinging spray that cleans and deodorizes in one step. Perfect for use on toilets, urinals, restroom fixtures, shower stalls, tile grout, sinks and more.

3524: Quart bottle with sprayer



3520

Topcat™ Alumina-Brite Metal Cleaner

A liquid cream cleanser designed to quickly and easily remove embedded stains, rust, grease, soap scum, mineral deposits, oxidation, and most any soil from metal. Brightens and polishes surfaces, while leaving them clean and free from odors.

Alumina-Brite can be used on aluminum, chrome and stainless steel, making it ideal for cleaning sinks, autoclaves, ultrasonic cleaners, and other areas found in healthcare, commercial and household settings.

3520: Quart bottle with easy flip-top cap



3521

Topcat™ Mighty-Mica Formica® Cleaner

A liquid cream cleanser designed to quickly and easily remove any embedded stains, grease, soap scum and most any other soil from Formica or Korian® countertops. Brightens and polishes surfaces, while leaving them clean and free from odors. Mighty-Mica's thick and clinging formula is ideal for use on Formica, fiberglass, ceramic tiles and other areas found in healthcare, commercial and household settings.

3521: Quart bottle with easy flip-top cap



3540

Topcat™ Dis-Stain Fabric/Carpet Cleaner

A ready-to-use, multi-enzyme fabric and carpet cleaner, deodorizer and protectant. Specifically formulated to remove blood and betadine stains from uniforms. Effectively removes spots caused by food, beverages, petroleum, urine and grease. Chemically neutralizes odor and bacteria strains. Contains Soil Guard® 2000 technology.

3540: Quart bottle with sprayer

Topcat™ Magic-Clean All Purpose Cleaner

A fast-acting formula with more active ingredients than national brands. Biodegradable and environmentally friendly, contains no bleach, ammonia or phosphates. Simply spray and wipe, no rinsing is required. Removes stubborn stains and grease on porcelain, Formica, floors, walls, furniture, stainless steel, chrome, plastic, desks, countertops, ceramic tiles and more. A perfect solution for healthcare, commercial and household use.



3523

3523: Quart bottle with sprayer

Topcat™ Glass-Glo Glass Cleaner

This no-streak formula quickly penetrates dust, grease, soil and smoke on windows and other glass surfaces. Also for use on countertops, plexiglass, display cases, mirrors, doors, windshields and more. Ideal for home or office.



3522

3522: Quart bottle with sprayer

Topcat™ Office Maintenance Kit

An all-inclusive kit to satisfy every office cleaning and maintenance need. Contains 1 quart each of Alumina-Brite, Mighty-Mica, Dis-Stain, Glass-Glo, Toity-Bowl, Magic-Clean and 1 scrub brush in an attractive grey caddy.



3525

3525: 1 full kit

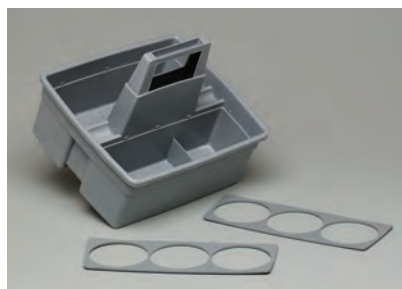
Topcat™ Vinyl Maintenance Kit

An all-inclusive kit for vinyl and naugahyde repair and maintenance. Protects valuable equipment from damage caused by harsh chemicals or daily wear and tear. Contains 1 quart each of Erase-Sure, Dis-Stain, Chair-Guard, V.L.P. and 1 scrub brush in an attractive grey caddy.



3545

3545: 1 full kit



3530

Topcat™ Caddy

Made of a lightweight, durable, space-age plastic, this attractive “carry-all” allows you to clean like a pro by keeping all of your cleaning “weapons” at the ready in one handy, portable location. The Topcat Caddy is designed with a high, comfortable handle and high sides to prevent bottles and cans from tipping over or falling out. Two snap-in dividers, with 3 cutout holes accommodate up to 3 quart bottles per side and up to 6 quarts per caddy. 12¼" x 11" x 5"

3530



3541

Topcat™ Erase-Sure™ Naugahyde Stain Remover

An all natural, 100% biodegradable, environmentally safe citrus solvent cleaner, degreaser and deodorizer. Erase-Sure will safely and easily remove all heavy greases, soil deposits, smoke stains, inks, carbons, dyes adhesives, tar, crayon and lipstick from vinyl, naugahyde and exam tables. Removes stains using heavy-duty penetration and emulsifying action. Contains no petroleum distillates or butyl cellosolve. A superb product for healthcare, commercial and household use.

3541: Quart bottle with pump spray

3526: 15 oz. aerosol can

3527: 1 oz. Ink/stain remover stick



3526

3527



3539

Topcat™ Chair-Guard™ Naugahyde Protectant

A highly refined blend of solvents, lemon oil and cleaning agents for a quick cleanup of furniture and equipment. Chair-Guard waxes and protects nearly all surfaces and wipes to a tough, dry shine. Protects and extends the life of naugahyde and exam tables from damage caused by disinfectants. Just apply to surface and wipe clean. Leaves a finish that resists smears and fingerprints. A superb product for healthcare, commercial and household use.

3539: Quart bottle with pump spray

3528: 14 oz. aerosol can



3528

Topcat™ Blo-Off™

A powerful blast of air removes dust, dirt and lint from hard-to-reach and delicate surfaces. Safely cleans data processing equipment, computer keyboards, copiers, camera lenses, magnification eyewear/loupes, light curing equipment, laser surgery equipment, photographic film, negatives, slides, x-rays, audiovisual components and almost any other item that attracts dust. Includes extension tube for quick, precise blasts of air where you need it.

3529: 10 oz. aerosol can with extension tube

3529



Topcat™ Once-A-Day™ 1 Second Spray

For use in air turbine hand pieces, prophylaxis angles and contra angles. Can also be used as a lubricant/cleaner for hand pieces. Spray daily. Noncorrosive (contains hexane).

702: 8.8 oz. aerosol can with extension tube

702



Topcat™ V.L.P. Vinyl/Leather Patch

Clear, tear repair epoxy can be used to patch vinyl, leather, naugahyde, dental chairs, exam stools, exam tables, massage tables, office furniture, medical equipment and vinyl throws.

72: 1 oz. tube



72

Topcat™ Super Scrubber

Effectively scrub debris off instruments before sterilizing or ultrasonic cleaning. Stiff bristles scrub the nooks and crannies where debris can hide and the handle gives you an effective grip. Multi-function brush can also scrub out spots from carpets. Keep an additional scrub brush in the operating room for hand scrubbing. Autoclavable, aseptic high-impact plastic. 4" x 2" with 3/4" bristles. Available in white only.



1868H

1868H



4210

Dynamic 1-Touch™ Quart Sprayer Head

Compact yet powerful, this sprayer has a high RPM motor and a dual reciprocating piston pump that delivers on both strokes for a more powerful spray. No more pumping means no more hand and wrist fatigue. Fits most quart bottles. 2 AA batteries included.

4210: Sprayer head only (bottle not included)



4240

Dynamic 1-Touch™ Versi-Sprayer™

Say goodbye to hand cramps with this completely ergonomic package. The Dynamic 1-Touch Sprayer is paired with a conveniently sized and color-coordinated 16 oz. black bottle. OSHA-compliant. Bottle is pre-labeled with blank fill-in areas for writing in the contents. 2 AA batteries included.

4240: Versi-Sprayer and 16 oz. bottle



4230

Dynamic 1-Touch™ Gallon Sprayer and Holster

Can cover larger areas with one-handed ease. The holster attaches to the neck of your one-gallon bottle, instantly turning it into the perfect power tool for any job. The no-drip nozzle adjusts from spray to stream and anything in between. 4 AA batteries included.

4230 (gallon bottle not included)



4260

Dynamic 1-Touch™ Fanny Pack

Manual sprayers can't keep up with the portable power of this work belt with attached holster. Hands-free comfort allows you to get the job done with no threat of repetitive stress injury. Clean surfaces on-the-go more efficiently and effectively. Plastic reservoir holds 48 fluid oz. and is removable for easy cleaning. Additional 12" extension spray nozzle and 4 AA batteries included.

4260



4250

Dynamic 1-Touch™ Rolling Power Caddy

No job is too big for this tool, which is equipped with a sprayer, a 2 gallon tank, all terrain wheels, a holster and a wand. The telescoping handle lets you pull it along with ease – no more struggling with heavy tanks. A continuous 14-foot stream or spray is delivered with just a touch of the trigger. Great for hospitals and clinics. 4 AA batteries included.

4250

To order call: 1-800-344-6424

Clear Plexiglass Bur Blocks with Boxes

An attractive, clear plexiglass bur block with 16- or 27-hole configurations to hold and organize burs. Comes in a clear, plastic box for easy storage. Available in friction grip or latch. $\frac{7}{16}$ " spacing between holes. Non-autoclavable.



16-Hole Bur Blocks

1516FG: Friction grip, $2\frac{13}{16}$ " x $1\frac{1}{4}$ " x $\frac{1}{2}$ "

1516LATCH: Latch style, $2\frac{13}{16}$ " x $1\frac{1}{4}$ " x $\frac{1}{2}$ "

27-Hole Bur Blocks

1516AFG: Friction grip, $2\frac{13}{16}$ " x $1\frac{7}{8}$ " x $\frac{5}{16}$ "

1516ALATCH: Latch style, $2\frac{13}{16}$ " x $1\frac{7}{8}$ " x $\frac{5}{16}$ "



Clear Plexiglass Bur Blocks™

An attractive, clear plexiglass bur block with 36-, 50-, 72-, or 100-hole configurations to hold and organize burs. Available in friction grip, latch or combo (half friction grip/half latch). Spacing between holes: 36-hole: $\frac{10}{16}$ ", all others: $\frac{5}{16}$ ". Non-autoclavable.



36-Hole Bur Blocks

1516BFG: Friction grip, 5" x 2" x $\frac{1}{2}$ "

1516BHALF: Combo, 5" x 2" x $\frac{1}{2}$ "

1516BLATCH: Latch style, 5" x 2" x $\frac{1}{2}$ "



72-Hole Bur Blocks

1516DFG: Friction grip, 5" x 4" x $\frac{1}{2}$ "

1516DHALF: Combo, 5" x 4" x $\frac{1}{2}$ "

1516DLATCH: Latch style, 5" x 4" x $\frac{1}{2}$ "



50-Hole Bur Blocks

1516CFG: Friction grip, $5\frac{5}{16}$ " x 2" x $\frac{1}{2}$ "

1516CHALF: Combo, $5\frac{5}{16}$ " x 2" x $\frac{1}{2}$ "

1516CLATCH: Latch style, $5\frac{5}{16}$ " x 2" x $\frac{1}{2}$ "



100-Hole Bur Blocks

1516EFG: Friction grip, $5\frac{1}{4}$ " x $3\frac{3}{4}$ " x $\frac{1}{2}$ "

1516EHALF: Combo, $5\frac{1}{4}$ " x $3\frac{3}{4}$ " x $\frac{1}{2}$ "

1516ELATCH: Latch style, $5\frac{1}{4}$ " x $3\frac{3}{4}$ " x $\frac{1}{2}$ "

*Does not come with box

Clear Hinged Box

Clear boxes, to store or organize multiple items in your dental office. 76 can be used as a spare box for 1516FG and 1516LATCH bur blocks. 77 can be used as a spare box for 1516AFG and 1516ALATCH bur blocks. Non-autoclavable.

77: $2\frac{7}{8}$ " x 2" x 2"

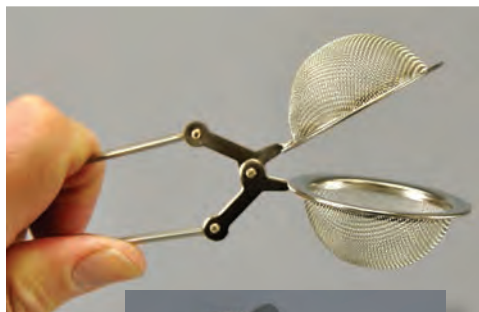


76



77

76: $2\frac{7}{8}$ " x $1\frac{13}{16}$ " x 1"



1861



Mesh Bur Holder

The stainless steel mesh bur holder closes tightly, allowing you to clean and sterilize burs, earrings, crowns, piercing studs or any small objects which might be compromised when handled with bare hands or fall down the drain. Safely secures small objects during ultrasonic cleaning or sterilization. Safe for steam or dry heat.

Length (from end of handle to end of mesh cups) 6", mesh cup diameter 1 $\frac{3}{4}$ ", individual mesh cup height $\frac{3}{4}$ ", combined height of mesh cups closed 1 $\frac{1}{2}$ ".

1861

Anodized Aluminum Bur Blocks

Can be autoclaved, dry-heat sterilized, chemiclaved or placed in an ultrasonic cleaner. With the attached cover, the burs are held securely in place. Aseptic and durable. Specify latch, friction grip or a combination of apertures. $\frac{1}{4}$ " spacing between holes.

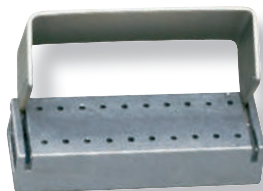


T10C: 10-hole (10 FG, 10 latch or combination
– 6 friction grip and 4 latch) 1 $\frac{5}{8}$ " x 1 $\frac{1}{8}$ "

T15C: 15-hole (15 friction grip, 15 latch or combination
– 10 friction grip and 5 latch) 1 $\frac{5}{8}$ " x 1 $\frac{1}{8}$ "



T20C: 20-hole (20 friction grip, 20 latch or combination
– 10 friction grip and 10 latch) 2 $\frac{3}{16}$ " x 1 $\frac{1}{4}$ "



T30C: 30-hole (30 friction grip, 30 latch
– 24 friction grip and 6 latch) 2 $\frac{7}{8}$ " x 1 $\frac{1}{4}$ "



40, 40A, 40B

Rotary Bur Blocks Organizer

Made of clear plastic with a dome-shaped cover. Available in friction grip, latch or combo (friction grip and latch mix). Turns 360° for easy access to burs. $\frac{1}{16}$ " spacing between holes. Non-autoclavable.

40: 60-hole, friction grip

40A: 62-hole, combo (18 friction grip/44 latch)

40B: 72-hole, latch

To order call: 1-800-344-6424

If you need to:

- hold
- cover
- dispense
- retain
- pump
- spray
- scrub
- save
- comply
- soak
- destroy
- line
- cap
- clip
- warn
- mask
- or
- prop anything



We've got just what you're looking for.



109

Hold-It™ Canister Holder

Save valuable counter space with this convenient wall mounting canister holder. Can be mounted directly to a cabinet or wall, putting products within easy reach. Accommodates all Palmero towelette containers and many other manufacturers' brands. Also available with a locking ring (see 109L below). Mounting hardware included. 6" x 5⁵/₈"

109



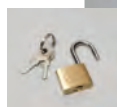
109L

Hold-It™ Locking Canister Holder

The same dimensions and description as our 109 canister holder but with the added safety of a locking hinge. Perfect for placement in public areas where vandalism or theft is a possibility. Allows you to use Palmero's disinfectant or antimicrobial handwipe towelettes in a public restroom setting where they are greatly needed without the fear of their disappearing. Use brass padlock (sold separately) to secure. Mounting hardware included. 7¹/₄" x 5⁵/₈"

109L: Locking canister holder

109LK: Padlock for locking canister holder



109LK



3514

Hold-It™ Round Quart Bottle Holder

An easy way to store quart bottles, saving valuable cabinet and counter space. Whether it's quarts of soap by the sink or disinfectants in the operatory, these holders keep bottles close at hand. Mounting hardware included. 5³/₄" x 3³/₄"

3514



3517

Hold-It™ Square Quart Bottle Holder

An easy way to store quart bottles, saving valuable cabinet and counter space. Whether it's quarts of soap by the sink or disinfectants like DisCide Ultra quart bottle (see page 4), these holders keep bottles close at hand. Mounting hardware included. 4³/₄" x 4" x 5¹/₂"

3517

Hold-It™ Gallon Bottle Holder

Make any gallon bottle easy to handle and store with this white metal holder. Available styles accommodate both round and square gallon bottles. Mount as needed for easy access to any product. Mounting hardware included.

3518: Gallon bottle holder, 5½" x 4½" x 4½"
3518R: Round gallon bottle holder, 8¼" x 6½" x 5½"



Hold-It™ Aerosol Can Holder

The perfect storage companion for all aerosol cans. Great for organizing products while saving counter and cabinet space in the lab, operatory, restrooms, storage areas or wherever there is a need to keep aerosol cans within easy access. Mounting hardware included. 6½" x 3½"

3510



3510

Hold-It™ Face Mask Holder

Durable, attractive holders can be mounted easily in accessible areas to prevent clutter. Mounted to walls, the side of cabinetry or on the inside of cabinet doors to store supplies out of the way. Mounting hardware included.

1856: Ear loop/pleated mask holder, 5" x 6" x 5"
1857: Cone face mask holder, 7¾" x 4" x 5"



1857

1856

Hold-It™ Glove Box Holder

Perfect for placement in the operatory where gloves are most needed. Designed to accommodate one, two or three boxes so that a variety of glove styles and sizes can be stored in the same convenient location. Mounting hardware included.

1858: Single/double box holder, 11" x 4" x 4"
1858T: Triple box holder, 12¼" x 4½" x 15"



1858T



1859S

1859R

Hold-It™ Tissue Box Holder

Perfect for placement in the operatory, restroom or anywhere facial tissues may be needed. Two different styles accommodate either rectangular or square box styles. Mount as needed in accessible areas to free up valuable counter space. Mounting hardware included.

1859R: Rectangular tissue box holder, 9¾" x 2½" x 4¼"

1859S: Square tissue box holder, 5" x 5" x 4¼"



1854

Hold-It™ Medium Box Holder

This strong white metal holder can be mounted as needed in accessible areas to keep items close at hand. Functional design and a pleasant appearance match the décor of any healthcare or clean room facility. Mounting hardware included.

9" x 4½" x 6½"

1854

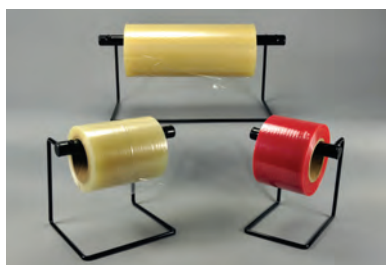


1853

Hold-It™ Large Box Holder

Keep items in plain sight to encourage use. With this mountable white metal holder, all work areas are easy to organize. Functional design and pleasant appearance. Mounting hardware included. 10½" x 6" x 7"

1853



Shown in photo:
1860M, 1860L, 1860S
Also available
1860XL, 1860J
Film rolls not included

Hold-It™ Roll Dispenser Racks

Sturdy construction can hold heavy rolls. Available in a variety of widths to fit various Palmero Bearriers and protectors. Also compatible with poly bags, shrink-wrap and anti-static tubing. 1" diameter crossbar fits all roll cores. Mount to wall or table top to save space. Mounting hardware included.

1860S: Small - 4"

1860M: Medium - 8"

1860L: Large - 14"

1860XL: Extra large - 24"

1860J: Jumbo - 36"

H
O
L
D
E
R
S

Denture/Retainer Boxes

A high-impact one-piece plastic container to hold mouthguards, retainers, bleaching laminates, bridgework or partials. Identification label included. Designed with contoured corners for easy cleaning. Packaged in assorted colors only. 12/bag. Denture boxes come in blue, yellow, beige and mauve. Retainer boxes come in neon pink, neon green, light blue and yellow.



1962, 1963

1962: Denture box, 3 $\frac{3}{4}$ " x 2 $\frac{1}{2}$ " x 2"

1963: Retainer box, 3" x 2 $\frac{3}{4}$ " x 1"

Cotton Roll Dispenser

Hinged lid for easy loading. Pull-out drawer dispenses up to three rolls while keeping bulk rolls free from contamination. Weighted non-skid base. Glutaraldehyde safe. Non-autoclavable. 4" x 2" x 4". Specify white, blue, beige or mauve.

1600



Available Colors 1600

Cotton Roll Holder

Base contains over 50 stainless steel pins to securely hold an entire package of cotton rolls. Hinged lid closes to keep remaining rolls clean when not in use. Phenol and glutaraldehyde safe. Steam autoclavable.

2 $\frac{1}{4}$ " x 3 $\frac{1}{8}$ " diameter.

Specify white, blue, beige or mauve.

1426



Available Colors 1426

Sponge Dispenser

Spring action releases pads for one-at-a-time removal. Great for gauze or cotton pads. Can be used for dry or moistened pads. Leakproof – holds all sterilizing and germicidal solutions including phenols. Weighted base prevents tipping. Steam autoclavable. 2" x 2" x 2 $\frac{1}{2}$ ".

Specify white, blue, beige or mauve.

1403



Available Colors 1403

Clear Hinged Box

Clear boxes, to store or organize multiple items in your dental office.

76: 2 $\frac{7}{8}$ " x 1 $\frac{3}{16}$ " x 1"

77: 2 $\frac{7}{8}$ " x 2" x 2"



76

77



46 47 48

Pump Dispensers

Dispense the right amount of liquid by pressing lightly on the cap. The swing-away cap springs back to prevent evaporation and spillage. Unbreakable plastic. 8 oz. capacity.

Blank:

46: Clear
47: Brown

Imprinted:

48: Alcohol



1952, 1952R

Instrument Scrubbing System

Used in conjunction with an approved solution such as DisCide ULTRA, the scrubbing system will thoroughly cleanse instruments and the outer surface of handpieces of bioburden before sterilization. Suction base. Made from an autoclavable material.

1952: Complete unit

1952R: Replacement brushes (set of 8)



1868

Hand Scrub Brush

Effectively scrub instruments of debris before sterilizing or ultrasonic cleaning. Stiff bristles scrub the difficult areas where debris can hide. Have an additional scrub brush in the operator for hand scrubbing. Autoclavable, aseptic high-impact plastic. 4" x 1½" x 1¼". Bristle length ½".

1868



1868H

Topcat™ Super Scrubber

Effectively scrub debris off instruments before sterilizing or ultrasonic cleaning. Stiff bristles scrub the nooks and crannies where debris can hide and the handle gives you an effective grip. Multi-function brush can also scrub out spots from carpets. Keep an additional scrub brush in the operator for hand scrubbing. Autoclavable, aseptic high-impact plastic. 4" x 2" with ¾" bristles. Available in white only.

1868H: Topcat™ Super Scrubber

Bonding Lens Shield

3" diameter

Easily adapts to most pistol or wand type VLCs (visible light cure) to help protect eyes from the harmful blue light used in curing and bleaching procedures. Constructed of an unbreakable polycarbonate with a protection of 530nm.

125



125

Dis-Pose Infectious Waste Bags

Designed for safe collection, handling and disposal of infectious waste. Packaged in an attractive, white self-dispensing box.

Meets OSHA and CDC recommended guidelines.

1961A: 10-gallon waste bag 24" x 24", 100/box, ties included

1961B: 16-gallon waste bag 31" x 24", 100/box, ties included

1961C: 33-gallon waste bag 41" x 41", 100/box, ties included



Black waste bin not included

1961A, 1961B, 1961C

Dis-Card™ Mini Waste Bin and Liners

Small, plastic waste receptacle for disposal of contaminated items.

Keeps area clear of contaminated materials, making cleaning and sterilization easy. Slotted mounting bracket included for easy removal or replacement. Beige waste bin, 6½" x 3¾" x 7"

Waste bin liners, red, 1 mil, 100/box

2106: Waste bin only

2106A: Reorder bin liners



2106, 2106A

OSHA Compliance Labels

OSHA Compliance Label systems for all healthcare facility needs. Easily identify all hazardous substances, waste and radiation areas.

1951: Disinfected sticker, 1½" x 1", 250/roll

1957: Caution radiation, 3" x 3", 5/pack

1958: Hazardous waste, 2¼" x 3¼", 100/roll

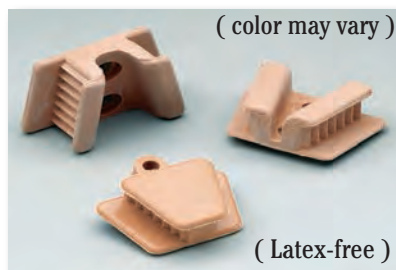
1959: Hazardous material, 2¼" x 4", 100/roll

1960: Biohazard warning, 3" x 3", 100/roll

3549: OSHA value pack kit:

Includes items 1957, 1958, 1959 and 1960





101, 101A, 101B

Mouth Props

Silicone mouth props reduce gagging and mouth fatigue. Ideal for adults or children. Finger channel for easy insertion. Deep corrugation for secure stabilization. Virtually indestructable silicone. Autoclavable. (Latex-free color may vary)

101: Small child (#01), 1 $\frac{1}{16}$ " x 1 $\frac{3}{8}$ " x $\frac{9}{16}$ "

101A: Child (#02), 1 $\frac{3}{4}$ " x 1 $\frac{1}{8}$ " x $\frac{5}{8}$ "

101B: Adult (#10), 1 $\frac{7}{8}$ " x 1 $\frac{1}{4}$ " x $\frac{3}{4}$ "



Available Colors

310, 311

Napkin Bib Holders

Chrome-plated alligator clips with a strong spring and sharp tooth jaws. Beautifully finished with ball chain or clear plastic "chill-free" sleeves. Available in blue, white, yellow, green, red and black. Autoclavable.

310: Chain, 15" long

311: Chill-free chain, 15" long



Patient Throw Colors
(check Product No.
for availability)

Nylon/Plastic Patient Throw

Soft, supple, durable aprons are waterproof, stain-resistant and washable. Velcro closure adjusts to fit snugly and comfortably. Reinforced towel clips attached to collar.

Nylon:

612: Knee length, 27" x 44", blue, yellow

613: Waist length, 27" x 30", blue, yellow, beige

Plastic:

850: Ankle length, 36" x 44", blue, green, clear

851: Knee length, 27" x 44", blue, clear

852: Waist length, 27" x 30", blue, clear

610: Lab apron, 45 $\frac{1}{2}$ " x 34 $\frac{1}{2}$ ", clear only
with tie closures



610



Product No. 6000

The Saddle Stool

This product is fully assembled. No assembly is necessary. Lift the handle under the seat to adjust the height.

- Pneumatic Adjustable Height Range: 21" to 31"
- 5 Heavy Duty Caster Wheels and Stationary Footing
- Chrome Plated Aluminum Base with Foot Rest
- Synthetic Leather Motorcycle Seat
- 360° Swivel Seat Movement
- Can be Stationary or Mobile – you decide

LASER EYEWEAR

3588DA

DIODE ALEXANDRITE MODEL, SILVER AND BLACK
FRAMES WITH GREEN POLYCARBONATE FILTER LENS.

Optical Density >5+ FROM 800-980nm;
VISIBLE LIGHT TRANSMISSION 50%.

Meets ANSI Z87-1 AND Z136.1 Standard for laser protection.
Rubber nose pad and rubberized temple bars provides comfortable
grip while the wrap around design ensures that your eyes are
protected. Comes in eyewear case with lanyard.



3589YG

DIODE MODEL, BLACK AND YELLOW WRAP STYLE FRAMES
WITH YELLOW/GREEN POLYCARBONATE FILTER LENS.

Optical Density >5+ FROM 800-830nm;
VISIBLE LIGHT TRANSMISSION 68%.

Meets ANSI Z87-1 AND Z136.1 Standard for laser protection.
Rubber nose pad and foam pad insert along brow provides
comfortable fit while the wrap around design ensures that your
eyes are protected. Comes in eyewear case with lanyard.



3590YG

DIODE MODEL, BLACK UNIFIT WRAP STYLE FRAMES WITH
YELLOW/GREEN POLYCARBONATE FILTER LENS.

Optical Density >5+ FROM 800-830nm;
VISIBLE LIGHT TRANSMISSION 68%.

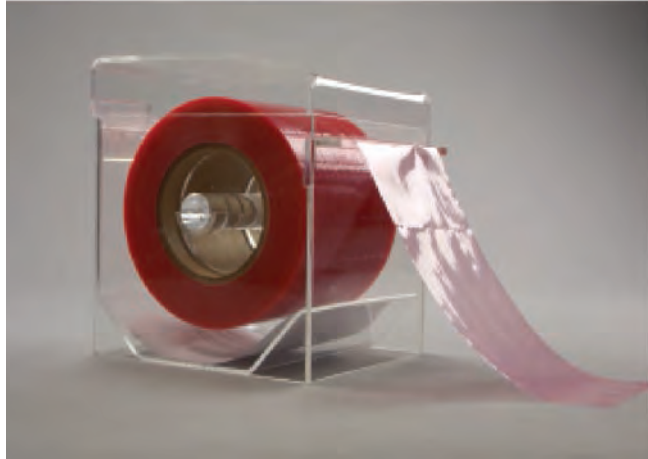
Meets ANSI Z87-1 AND Z136.1 Standard for laser protection.
Rubber nose pad and lightweight unifi nylon frame with the wrap
around design ensures that your eyes are protected.
Comes in eyewear case with lanyard.



NEW PRODUCTS

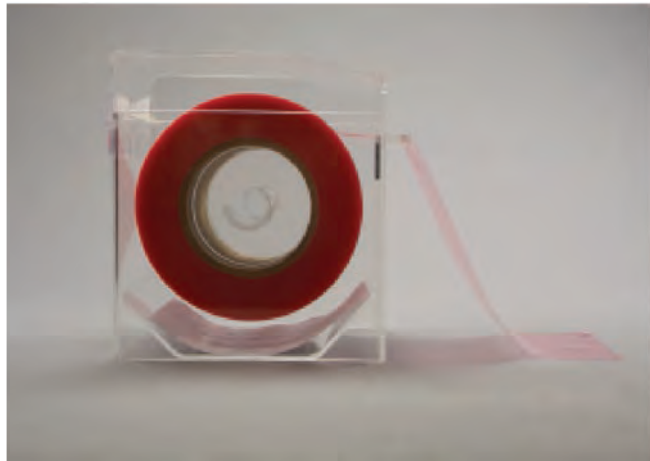
ACRYLIC FILM DISPENSER

TABLE TOP FILM DISPENSER.

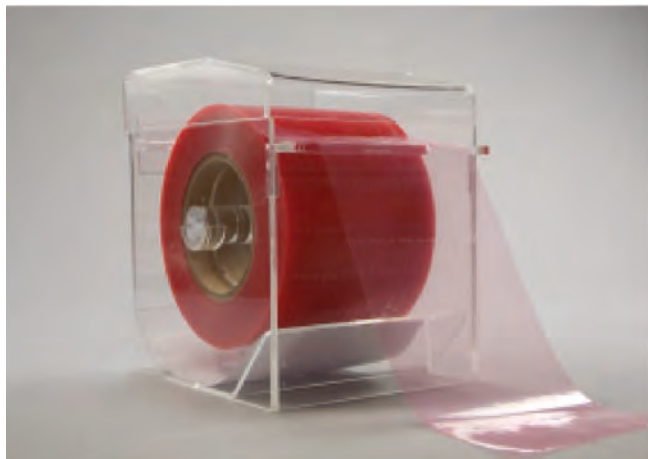


DESIGNED TO FIT PHC
BEARRIER FILM SIZE
4" X 6" AND 2½" x 6".

MADE OF CLEAR
ACRYLIC PLASTIC.



OVERALL DIMENSIONS
5½" W X 7 ⅛" H X 6 ¼" D.



1855A

NEW PRODUCTS

To order call: 1-800-344-6424

Glossary

ANSI (American National Standards Institute) oversees the creation, promulgation and use of thousands of norms and guidelines that directly impact businesses in nearly every sector.

It accredits programs that assess conformance to ISO 9000 and ISO 14000 standards.

ANSI Ballistic Vo Rating: *Mil-PRF-31013 Vo ballistic test* is performed on eyewear in which a 0.15" diameter steel projectile (15 caliber) is fired at the lens at a velocity of 640-660 feet per minute (195 meters per second).

ANSI Z87: Basic impact. Face shields must be capable of resisting impact from a 25.4 mm (1") diameter steel ball dropped from a height of 127 cm (50").

ANSI Z87+: High impact. Face shields must be capable of resisting impact from a 6.35 mm (0.25") diameter steel ball traveling at a velocity of 91.4 m/s (300 ft/s).

CSA Z94.3-2007 is the Canadian standard for eye and face protectors in all occupational and educational operations.

Diopter relates to the refractive or light-bending capability as well as the curvature of a lens.

The higher the diopter of a lens the closer an object must be to the lens to be in focus.

This refers to the diopter's focal length.

Disinfectants are used on hard, inanimate objects to kill infectious fungi or bacteria but not necessarily their spores. Disinfectants are divided into two major types: "hospital" and "general use." Hospital-type disinfectants are used in hospital, medical and dental offices or any environment where critical infection control is needed. General-type disinfectants are used in household, swimming pools and water purifiers.

EPA (Environmental Protection Agency) leads the nation's environmental science, research, education and assessment efforts. The mission of the EPA is to protect human health and the environment. The EPA, located in Washington, DC, runs ten regional offices and more than a dozen labs.

FDA (Food and Drug Administration) is responsible for monitoring the safety and effectiveness of drugs, vaccines and other biological products for human and veterinary use, medical devices, food, cosmetics, dietary supplements, and products that give off radiation.

Lumen is the measure of the power of light perceived by the human eye.

mcd (millicandela) is the unit of measure used to describe LED (light-emitting diode) intensity.

OSHA (Occupational Safety and Health Administration) As part of the U.S. Department of Labor, its mission is to

prevent injuries, illnesses and fatalities in the workplace by establishing and enforcing standards for workplace safety and health. OSHA requires manufacturers of industrial and safety equipment to be OSHA-compliant to provide the highest degree of safety.

Sanitizers are used to reduce but not necessarily eliminate microorganisms from inanimate surfaces to levels considered safe as determined by public health codes or regulations. Sanitizers include food contact and non-food contact products.

Material Safety Data Sheet Guide (MSDS)

Disinfectants

MSDS	Product	Product No.
MSD100	DisCide Ultra Disinfectant Towelettes	60DIS, 10DIS
MSD150	DisCide Ultra Disinfectant Spray 4 oz, Quart and Gallon	3564, 3565Q, 3565G
MSD200	DisAseptic XRQ RTU	3503, 3504, 3532
MSD250	DisCide XRA Towelettes	3500
MSD300	DisCide Effect PCMX	3542, 3543, 3544
MSD350	DisCide Disinfecting Aerosol Spray	3513
MSD375	DisCide Germicidal Foam Cleaner	3512

Miscellaneous Wipes

MSDS	Product	Product No.
MSD600	Provision Crystal Clear Optical Cleaning Wipes	3534
MSD610	EcoSafe Towelettes	3501
MSD620	Refreshing Patient Facial Towelettes	3515
MSD400	TelAseptic Towelettes	3538
MSD750	Citrisol Orange Solvent Towelettes	69

Bearriers

MSDS	Product	Product No.
MSD1000	Bearrier Film	1803C, 1865, 1866, 1867
MSD1000B	Bearrier Film	1803B

Eyewear

MSDS	Product	Product No.
MSD550	ProVision Crystal Clear Lens Cleaning Station	3535

X-ray

MSDS	Product	Product No.
MSD800	Cling Shield X-Ray Lead Apron	All Cling Shield Aprons
MSD850	Cling Shield X-Ray Lead-Free Apron	All Cling Shield Aprons

Evacuation

MSDS	Product	Product No.
MSD450	Vacuum Clean Tablets	3547
MSD500	Vacuum Shock Tablets	3546
MSD505	Vacuum Fresh Tablets	3548
MSD525	Ultra Super Sonic Cleaning Tablets	3559

Topcat

MSDS	Product	Product No.
MSD900	Topcat Once-A-Day	702
MSD905	Topcat Alumina-Brite	3520
MSD910	Topcat Blo-Off Aerosol	3529
MSD915	Topcat Chair-Guard	3539
MSD920	Topcat Chair-Guard Aerosol	3528
MSD925	Topcat Dis-Stain	3540
MSD930	Topcat Erase-Sure	3541
MSD935	Topcat Erase-Sure Aerosol	3526
MSD940	Topcat Erase-Sure Stick	3527
MSD945	Topcat Glass-Glo	3522
MSD950	Topcat Magic-Clean	3523
MSD955	Topcat Mighty-Mica	3521
MSD960	Topcat Toity-Bowl	3524
MSD965	Topcat V.L.P. Vinyl/Leather Patch	72

Visit www.palmerohealth.com to download and review our Material Safety Data Sheets product specifications. Available in PDF format.

WE ARE CONSTANTLY IMPROVING OUR
PRODUCTS TO PROTECT YOU



TO PLACE YOUR ORDER,
FAX 203-377-8988
CUSTOMER SERVICE 1-800-344-6424
WWW.PALMEROHEALTH.COM