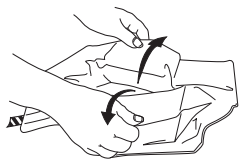


# Drainage instructions

## PleurX™ catheter system

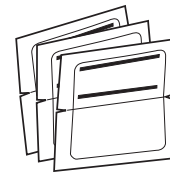
**Getting started:** Have all drainage supplies ready and then thoroughly wash your hands.



- 1** Open all packaging. Unfold blue wrapping. Place bottle near wrapping and lay access tip on blue wrapping.

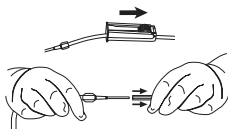


- 2** Pick up each glove by the wrist cuff and put both of them on.

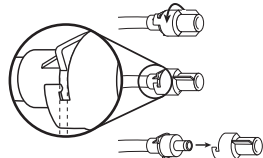


- 3** Tear open alcohol pads. Lay open alcohol pad pouches on blue wrapping a short distance from sterile items.

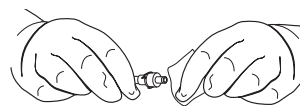
**Connecting the drainage bottle:** Be sure to keep the end of the catheter and access tip clean.



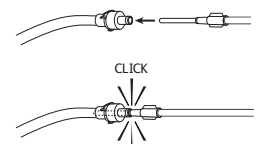
- 4** Close roller clamp completely by rolling the wheel on roller clamp toward bottle. Remove access tip cover by twisting and pulling gently. Set access tip on blue wrapping.



- 5** Take valve cap off catheter.

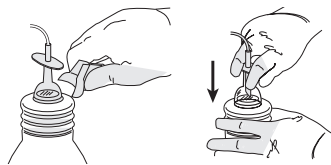


- 6** Clean around valve opening with first alcohol pad.

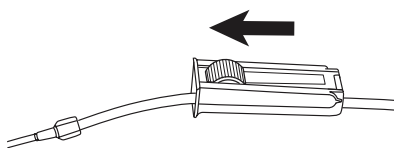


- 7** Insert access tip into catheter valve.

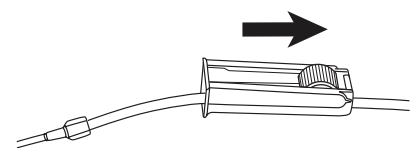
**Draining fluid:** Do not drain more than 1,000 mL from your chest or 2,000 mL from your abdomen at any one time.



- 8** Remove support clip from top of drainage bottle and push down T plunger.

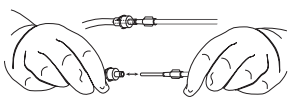


- 9** To begin draining, roll the wheel on the roller clamp away from vacuum bottle.

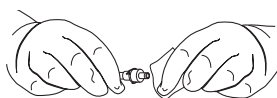


- 10** When finished draining, completely close the roller clamp by rolling the wheel on toward the bottle.

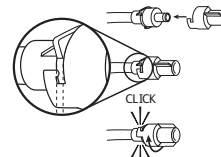
**Final steps and disposal:** If you have any questions or concerns, contact your doctor or nurse.



- 11** Pull access tip out of the valve; set drainage line down.



- 12** Clean around the valve opening with second alcohol pad.



- 13** Place new cap on catheter valve and twist it until it clicks into its locked position.



- 14** Clean around catheter site with third alcohol pad.



- 15** Place foam catheter pad around catheter and wind catheter on top of pad. Cover catheter with gauze pads.



- 16** Apply self-adhesive dressing over gauze pads.



- 17** Push down T plunger and move the plunger in a circular motion to further puncture foil seal so fluid can be poured out.



- 18** Remove flexible cap and drainage line from bottle.

- 19** Empty bottle into toilet. Place bottle in a plastic bag, seal tightly and discard.

These instructions are to be used only as a supplemental reference. Read the *Instructions for Use* that come with the drainage kits and watch the drainage video for more detailed instructions.

BD, Vernon Hills, IL, 60061, U.S.

[bd.com](http://bd.com)

© 2017 BD. BD, the BD Logo and PleurX are trademarks of Becton, Dickinson and Company. IS8235 (0917/20000)

