

INSTRUCTIONS FOR USE

Sterilization



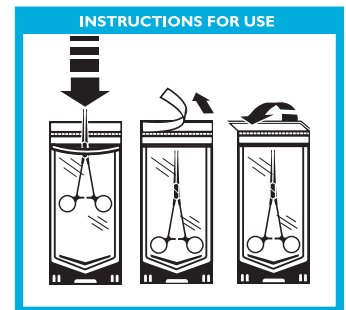
Duo-Check® Sterilization Pouch

Instructions for use:

1. **Storage** - Store all sterilization pouches in a cool, dry place.
2. **Loading*** - Carefully place items into pouches and remove excess air before sealing. Where possible, use a pouch rack to stand pouches on edge in the sterilizer to facilitate sterilization and drying. When loading multiple pouches, be sure that the plastic side faces the paper side of each adjacent pouch.
3. **Sterilization** - Chemical process indicators are printed internally and externally on each pouch and change color during sterilization to visually verify pouches have been processed. Pink arrows will turn brown when processed by steam. Blue arrows will turn gold/brown when EtO processed. These process indicators **ONLY** measure temperature and should be used in conjunction with a multi-parameter indicator strip which measures temperature, for a specified time, and the presence of steam. This procedure, when used in conjunction with routine biological monitoring (spore testing), provides you with the highest level of sterility assurance.
4. **Shelf Life** - When properly sealed, sterility is maintained up to three (3) years provided the integrity of the pouch has not been compromised, i.e. pouch becomes wet, damaged or is opened during storage.
Caution - wet pouches may not preserve sterility of contents.



Ref.#'s SCZ, SCXX, SCX, SCQ, SCXS,
SCS, SCS5, SCL322, SCB1X, SCM,
SCL515, SCL, SCL816, SCL1015,
SCL1215, SCL1218



Single-Use Pouches - Sterilization pouches are single use items. Do not re-use.

Duo-Check® Sterilization Pouches are not considered hazardous waste and can be disposed of in regular trash (40 CFR 261.24 tested using the TCLP, EPA Publication SW-846).

* REFERENCE - ANSI/AAMI ST79 Comprehensive Guide to Steam Sterilization and Assurance in Health Care Facilities.

Duo-Check® is a registered trademark of Crosstex International, Inc.


Do not reuse.



Not made with natural rubber latex.



CROSSTEX
A CANTEL MEDICAL COMPANY



MDSS GmbH
Schiffgraben 41
30175 Hannover, Germany



Made in USA

Manufactured by: Crosstex International, Inc.
10 Ranick Road | Hauppauge, NY 11788 | 631.582.6777 | 888.276.7783 | Crosstex@crosstex.com

DC-IFU
Rev. 0 - 3/17