

Want to say goodbye to profit-robbing back pain?



By introducing innovative, ergonomic saddle seat technology,  
Brewer delivers a new way to offer you

## The Power to Advance



*Brewer 135DSS Dynamic Split-Saddle-Seat Technology*

# Brewer

Data shows that profit-robbing lower back pain affects 81% of dental professionals, which can lead to shortened work hours, leaves of absence and shortened careers.<sup>1, 2</sup> So what can you do to help safeguard yourself and your entire team?

## Optimize posture and production with Brewer’s latest patented breakthrough – Dynamic Split-Saddle-Seat Technology.

Muskuloskeletal disorders in the workplace account for \$14 billion in worker compensation and result in 100 million lost workdays. In order to maximize your production, it’s imperative that you do what you can to protect the back health of every member of your practice.

That’s why Brewer is proud to introduce the 135DSS – a unique combination of leading-edge ergonomic technology and real-world affordability. The result is an innovative solution specifically designed to help make doctors, assistants and hygienists as comfortable and productive as possible.

- Naturally aligns vertebrae and discs.
- Relieves shoulder and neck tension.

Ergonomic saddle-seat design enhances posture

- Lessens spinal muscle degeneration and back pain.
- Core muscles become active and support the spine when sitting, which helps them become stronger over time.

Dynamic action strengthens your core as you work



Patented Split Saddle Seat improves comfort

- Eases the load on back muscles by distributing weight over “sit bones” and wider hip abduction lessens the tendency to slump.
- Helps cool the body, relieve pressure, improve circulation and protect reproductive health.

Engineered to support deeper breathing

- Result of elongated torso.
- More oxygen promotes circulation and helps reduce fatigue.

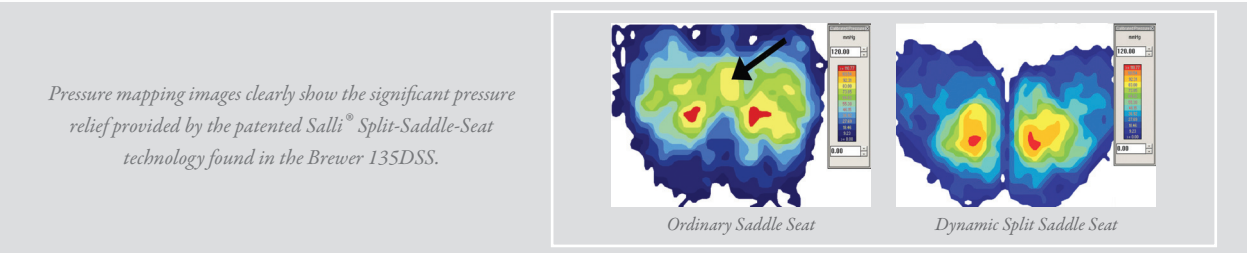
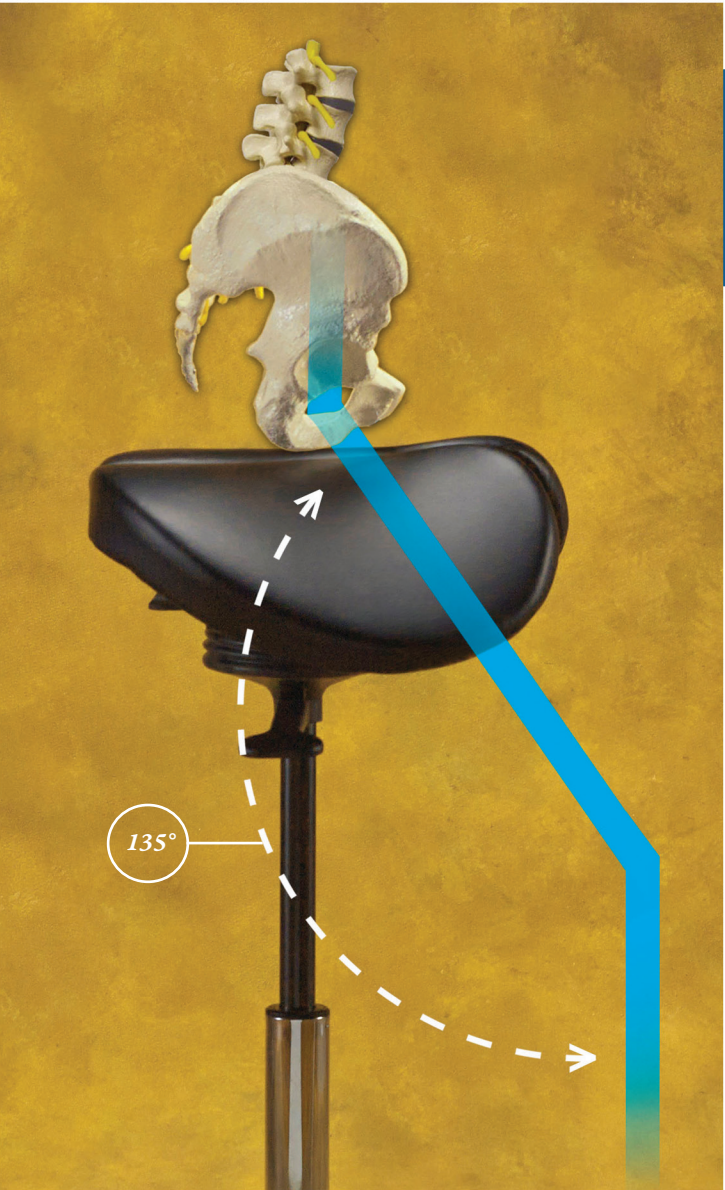
**A unique angle on comfort**  
The Brewer 135DSS is designed to provide the most comfortable seating position possible.

Simply adjust the seat height so your upper and lower legs create a 135° angle while both feet are flat on the ground. This position naturally straightens the spine to minimize strain on back muscles.

In studies, 87% of women and 80% of men have preferred the patented split-saddle-seat technology found in the innovative Brewer 135DSS to other seating options.

Simply Select the Model  
Ergonomically Designed for You

Model Number	User Height
135DSS-L	Under 5’3”
135DSS	5’3” to 5’11”
135DSS-H	Over 5’11”



*The Power to Advance*  
**Financially**  
*The Power to Advance*  
By introducing practical ergonomic innovations, Brewer offers you the power to advance the productivity of your entire team.

The Brewer 135DSS features back-protecting Salli® Dynamic Split-Saddle-Seat Technology.



Brewer offers the most comprehensive line of advanced ergonomic seating solutions in the industry. Innovations designed to help you safeguard the backbone of a productive practice like no one else can.

In addition, our entire line of solutions is manufactured to our rigorous U.S. quality standards and backed by best-in-class standard warranties. It's all part of our commitment to provide you with The Power to Advance.

For more information about the many ways we deliver The Power to Advance, contact your Brewer representative or local equipment dealer today.

# Brewer

The Brewer Company, LLC  
N88 W13901 Main Street, Suite 100  
Menomonee Falls, WI 53051

1.888.273.9371  
[www.brewercompany.com](http://www.brewercompany.com)

