

CONTACT PRO[®]

MATRIX SYSTEM



Simple Technique for Outstanding Results

The reliable, consistent and easy to use system that provides solutions for Class II Restorations.

1 Place the Matrix Band



Select a band that matches the height of the tooth and place it with the concave edge toward the occlusal margin using the SmartTab at the top of the band.

2 Place the Wedge



Place a finger on the band to prevent dislodgment and firmly insert wedge to seal the gingival margin.

3 Place the Ring



Open the ring with your ContactPro[®] Ring Forceps and place it directly over the wedge, seating it as far gingivally as possible.

4 Voila!



Simple technique for outstanding results.

Wide Visibility:

Stackable and assists in providing great access for light curing

Memory Metal:

Our exclusively engineered memory metal provides consistent results

Engineered Tip Design:

A universal ring designed to not crush the box and work on both wide and narrow indications

Easy to Open:

Easy to open with a strong grip around the tooth

Strong Force:

The tip design is supported by a strong clamping force, allowing the ring to work on smaller size molars and pre-molars

Adaptable Tip Material:

Tips made of a soft silicone for adaptability to the tooth shape but hard enough to keep a firm grip without pinching the gums

Secure Fit: Fits securely along the gingival margin for better overall adaptation



Secure fit at gingival margin



Stackable with wide visibility



Easy to open with a strong grip

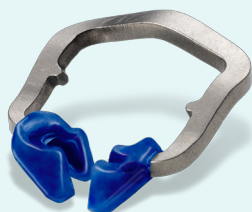
Order today through your preferred dealer.

For questions, call Microbrush[®] International at (866) 866-8698.



Ultimate Contact for All Your Class II Restorations

CONTACT PRO[®] Ring



Features & Benefits

- » Our exclusively engineered memory metal provides consistent results
- » Easy to open with a strong grip around the tooth
- » Wide visibility
- » Fits securely along the gingival margin for better overall adaptation
- » Better access for light curing

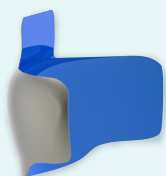
SmartView Clip



Features & Benefits

- » Applies forces both perpendicular to the tooth and down toward the gingival margin
- » Semi-pliable nylon tips for strength and flexibility
- » Operates at the gingival margin to allow greater access to the prep area
- » Works with any wedge

CONTACT PRO[®] SmartBand



Features & Benefits

- » Defined marginal ridge
- » Ultra-thin stainless steel for contouring to the tooth
- » SmartTab feature for easy pick-up and placement
- » Naturally curved for easy use
- » Non-stick coated bands available for easy placement and removal

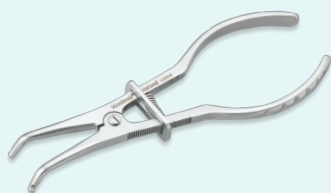
CONTACT PRO[®] Wedge



Features & Benefits

- » Anatomical shape
- » Made of Maple Wood from sustainably managed forests
- » Optimum adaptation along the tooth cervical margin

CONTACT PRO[®] Matrix Ring Forceps



Features & Benefits

- » Specially optimized for the ContactPro[®] Matrix System for unmatched ease of use
- » High-grade stainless steel
- » Strong and lightweight
- » Autoclavable

CONTACT PRO[®] Matrix Band Forceps



Features & Benefits

- » Precision made to provide a strong and secure grip for easy and predictable band removal
- » High-grade stainless steel
- » Strong and lightweight
- » Autoclavable

ContactPro[®] Matrix System Kits

Description	Part Code
Expert Kit - Coated Bands	291699
Expert Kit - Uncoated Bands	291698
Primary Kit - Coated Bands	291701
Primary Kit - Uncoated Bands	291700
Intro Kit - Coated Bands	291703
Intro Kit - Uncoated Bands	291702

For a complete list of Kit contents and numbers, please visit Microbrush.com/contactpro

Sectional Matrix Rings

Description	Qty	Part Code
ContactPro [®] Ring Refill Pack	2	291710
SmartView Clip Refill Pack	3	291807

ContactPro[®] Instruments

Description	Qty	Part Code
ContactPro [®] Ring Forceps	1	291712
ContactPro [®] Band Forceps	1	291711

ContactPro[®] Wedge Refill Packs

Size	Color	Qty	Part Code
X-Small	Pink	100ct.	291746
Small	Blue	100ct.	291747
Medium	Green	100ct.	291748
Large	Yellow	100ct.	291749
Assorted	Assorted	400ct.	291750

ContactPro[®] SmartBand Refill Packs

Size	Coated/Uncoated	Qty/Color	Part Code
3.5mm	Coated	100/White	291704
4.5mm	Coated	100/Green	291591
5.5mm	Coated	100/Blue	291593
6.5mm	Coated	25/Purple	291705
7.5mm	Coated	25/Gray	291706
3.5mm	Uncoated	100/Silver	291707
4.5mm	Uncoated	100/Silver	291590
5.5mm	Uncoated	100/Silver	291592
6.5mm	Uncoated	25/Silver	291708
7.5mm	Uncoated	25/Silver	291709

Order today through your preferred dealer.
For questions, call Microbrush[®] International at (866) 866-8698.

9852.01