



# PRODUCT PROFILES

## Tango-Endo™ Instruments

*It Only Takes Two*



### The Tango-Endo Introductory Kit

Includes: 6 Tango-Endo Instruments (3 Shaping, 3 Finishing), 1-Tango-Endo Reciprocating Handpiece, 60 Precision matched gutta percha points.

*See back for details.*

### Feature

### Benefits

#### Economical:

- Time saving two instrument shaping system.
- Tough and reusable. Use Tango-Endo instruments up to 3 times providing dramatic savings compared to single use systems.
- Affordable Tango-Endo reciprocating handpiece can be used with your current endo motor or any e-type air motor.

#### Safe:

- Patented flat along the entire length creates two vertical blades, increased cutting, and reduced engagement of the instrument for faster advancement with less resistance to the apex.
- Unique flute design facilitates safe canal shaping and finishing.
- The patented flat increases instrument flexibility without compromising strength.
- Tango-Endo Instruments are specifically designed for the Tango-Endo reciprocating handpiece to virtually eliminate binding and instrument separation.
- Prevents canal distortion.

#### Efficient:

- Simple 2 step process.
- Superior ability to negotiate curves.
- Quickly navigates to the apex.
- Calibration rings provide quick and precise assistance in determining the working length.



*The affordable Tango-Endo reciprocating handpiece can be used with your current endo motor or any e-type air motor.*



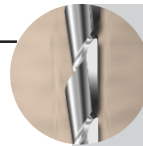
With Tango-Endo Instruments, it only takes two instruments to complete most cases. By eliminating the fear of fracture you can now complete your endo cases in a simple and predictable process.

Along with an efficient flute design, Tango-Endo instruments have a patented non-interrupted flat along the entire working length.

This design:

- Reduces instrument engagement allowing faster advancement with less resistance.
- Creates space for dentinal debris.
- Reduces compressive and tensile stresses during use enabling improved instrument durability.
- Increased flexibility without sacrificing strength.

The Tango-Endo reciprocating system prevents excessive binding. You can safely work lateral canal walls while preserving canal anatomy.



**Unique flute design facilitates safe canal shaping and finishing.**

## ORDERING INFORMATION

### Tango-Endo Introductory Kits:

- 5425-00: 6-25mm Tango-Endo Instruments (3 Shaping: 30/02, 3 Finishing: 30/04), 1-Tango-Endo Latch-Type Reciprocating Handpiece, 60 Precision matched gutta percha points.
- 5421-00: 6-21mm Tango-Endo Instruments (3 Shaping: 30/02, 3 Finishing: 30/04), 1-Tango-Endo Latch-Type Reciprocating Handpiece, 60 Precision matched gutta percha points.

### Tango-Endo Instrument Refill Kits:

- |          |                       |   |
|----------|-----------------------|---|
| 5421-02: | Shaping Refill-21mm   | 6 Tango-Endo Shaping Instruments (30/02)                |
| 5425-02: | Shaping Refill-25mm   | 6 Tango-Endo Shaping Instruments (30/02)                |
| 5421-04: | Finishing Refill-21mm | 6 Tango-Endo Finishing Instruments (30/04)              |
| 5425-04: | Finishing Refill-25mm | 6 Tango-Endo Finishing Instruments (30/04)              |
| 5425-40: | Refill-25mm           | 6 Tango-Endo Instruments for large canals (40/02)       |
| 5425-50: | Refill-25mm           | 6 Tango-Endo Instruments for extra-large canals (50/02) |

### Tango-Endo Handpiece

- 5300-00: One Tango-Endo 4:1 Reduction Latch-Type Reciprocating Handpiece

### Tango-Endo Precision Gutta Purchase

- 5400-01: 60 Precision matched gutta percha points, molded (not rolled) to fit your Tango-Endo system.

For our complete line of patented dental products please visit our website at: [www.edsdental.com](http://www.edsdental.com)

# Essential Dental Systems

## Endo-Express™



## SAFE SIDER®

### FEATURES

#### Endo-Express System

Allows canals to be shaped in 2-5 minutes per canal from the time of measurement without hand fatigue.

#### Reciprocating Motion

Replace instruments because they dull, not because you fear they will break!

Reciprocation creates a balanced force, the instruments stay centered.

The 45 degree motion virtually eliminates:

- cyclic fatigue
- torsional stress
- binding
- which virtually eliminates instrument separation

Obtain .08 tapers safely and efficiently.

#### Relieved Reamers provide less flutes

SafeSiders have 16 flutes compared to 24 flutes for files. Less flutes mean less engagement with the walls of the canal which means less resistance, binding and virtually no instrument separation.

#### Flat-side of the SafeSiders

Act as chisels in the clockwise and counter clockwise motion allowing you to go through the tooth and remove debris with unexpected ease.

#### Simple Instrumentation Technique

Easily mastered technique.

#### Economic

Prevents canal distortion.

Costs 90% less than rotary NiTi on a per use basis.

SafeSiders are safely used at least 3 times more than NiTi instruments before they are discarded so costs are dramatically reduced.

Because the risk of instrument separation is virtually eliminated, you gain confidence and perform increasingly challenging endo cases in your office.

Due to engine driven reciprocation, chair time is greatly reduced improving productivity.



## Avoid Separation Anxiety!

SafeSiders® System is a series of patented, non-circular, non-interrupted flat-sided instruments designed to reduce endodontic stress. A high level of predictable performance, without fear of instrument fracture, eliminates procedural stress for dentists and their patients.

*"SafeSiders Rock!! Sincere thanks to Dr. Musikant for developing the SafeSiders system . . . I did three RTC's in 1 hour start to finish. I'm stoked with this system."*  
Cam Christopher, DDS -WA.

*"I prefer SafeSiders whole-heartedly. Rotary files separate VERY easily. SafeSiders do not."*  
Rich Fossum, DDS -TX.

*"I just did my first few cases with SafeSiders and I'm here to tell you that they are as fast or faster than rotaries."* Bradley Smith, DDS.

*"Beautiful stuff man . . . I could look at endo all day if it was like that."*  
David Albertson, DDS -Alaska.

U.S. Patent No. 5,632,620, 5,803,732, & 6,042,376. European Patent No. EP 1075228.  
Other foreign patents pending.

1-800-22-FLEXI • 201-487-9090 • Fax 201-487-5120 • [www.edsdental.com](http://www.edsdental.com) • [info@edsdental.com](mailto:info@edsdental.com)

SafeSiders & Endo-Express

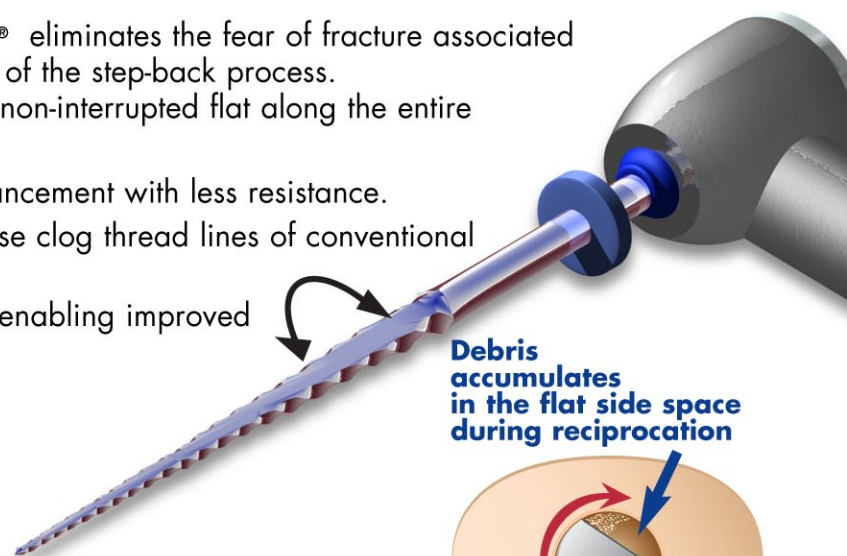


The **Endo-Express® System with the SafeSiders®** eliminates the fear of fracture associated with crown-down systems and the typical shortcomings of the step-back process.

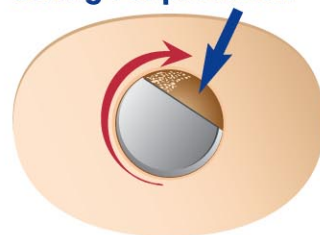
**SafeSiders®** are the only instruments with a patented non-interrupted flat along the entire working length. This flat:

- Reduces instrument engagement allowing faster advancement with less resistance.
- Creates space for dentinal debris that would otherwise clog thread lines of conventional reamers and files.
- Reduces compressive and tensile stresses during use enabling improved instrument durability.
- Increased flexibility without sacrificing strength.
- Eliminates separation anxiety.

Unlike conventional reamers/files which can potentially block canals and push debris over the apex, the **Endo-Express®** 45 degree reciprocating system eliminates those shortcomings. They also prevent binding, by engaging dentin only during clockwise rotation. Counterclockwise rotation disengages from the dentin.



**Debris accumulates in the flat side space during reciprocation**



**Cut Away Top View**



**Endo-Express E-Type, 4-hole air motor**



**Endo-Express reciprocating handpiece**

## ORDERING INFORMATION:

### Endo-Express Kits:

Endo-Express System w/ motor (21 mm Length)	E-Type, 4-hole air motor, Endo-Express reciprocating handpiece, SafeSider Intro Kit- 21mm Length, 4 Refills (one each) .08, 10, 15, & 20. SafeSiders Premium Gutta Percha	Cat. No. 5610-21
Endo-Express System w/ motor (25 mm Length)	E-Type, 4-hole air motor, Endo-Express reciprocating handpiece, SafeSider Intro Kit- 25mm Length, 4 Refills (one each) .08, 10, 15, & 20. SafeSiders Premium Gutta Percha	Cat. No. 5610-25
Endo-Express System (21 mm Length)	Endo-Express reciprocating handpiece, SafeSider Intro Kit- 21 mm Length, 4 Refills (one each) .08, 10, 15, & 20. SafeSiders Premium Gutta Percha	Cat. No. 5600-21
Endo-Express System (25 mm Length)	Endo-Express reciprocating handpiece, SafeSider Intro Kit- 25mm Length, 4 Refills (one each) .08, 10, 15, & 20. SafeSiders Premium Gutta Percha	Cat. No. 5600-25
Endo-Express handpiece	Endo-Express reciprocating handpiece	Cat. No. 5500-00
Endo-Express Air Motor	Endo-Express E-Type, 4-hole air motor	Cat. No. 5510-00

### SafeSiders® Intro Kits:

Each **SafeSiders®** Intro Kit Contains:

Stainless Steel: Two - 08, Two - 10, Two - 15, Two - 20, Two - 25, Two - 30, Two - 35, Two - 40.

Nickel-Titanium: Two - 30/.04, Two - 25/.06, Two - 25/.08 Two - No. 2 Pleezer reamers, One - Endodontic Sterilization Tray

**21mm Reamer Intro Kit** Cat. No. 5021-00

**25mm Reamer Intro Kit** Cat. No. 5025-00

SafeSiders Steri-Tracker	Tracks number of sterilization/uses of the SafeSider instruments	Cat. No. 5000-75
SafeSiders Endo Stops	300 Endo Stops (50 each of 6 sizes). Size: 0.5mm(Black), 1mm(White), 2mm(Yel.), 3mm(Red), 4mm(Blue), 5mm(Black). All stops 3.3mm dia.	Cat. No. 5000-06
SafeSiders Deluxe Gutta Percha Points	60 Deluxe, Hand Rolled, Gutta Percha Points	Cat. No. 5000-M

**For our complete line of patented dental products please visit our website at: [www.edsdental.com](http://www.edsdental.com)**

**89 Leuning Street • S. Hackensack NJ 07606 • CE Approved Products**



## EZ-Fill® & EZ-Fill® Xpress

Bi-Directional Spiral & Epoxy Root Canal Cement



**The simplest and most thorough obturation system!**

**Cement is driven laterally, not apically!**



### FEATURES

Patented bi-directional spiral\*

Single gutta percha point technique

No lateral stress on the root

Room temperature obturation

Very Radiopaque

Non-eugenol, epoxy resin chemistry

Proven Long-Term Clinical Success

User friendly technique

Economical system

### BENEFITS

Thoroughly coats the walls of the root canal and lateral canals without significant cement being forced apically.

The reverse apical spirals rotate in an unwinding direction out of the canal, preventing binding.

Allows a coronal path of exit for excess cement, thus preventing it from going over the apex.

Additional cement is utilized, ensuring a proper seal.

The cement works synergistically with the gutta percha to assure a complete seal.

Lateral or vertical condensation is usually not needed with the EZ-Fill technique.

Unlike thermoplastic techniques, there is no shrinkage upon cooling.<sup>1</sup>

The flow of cement at room temperature into lateral canals is superior to thermoplastic gutta percha.<sup>2-3</sup>

Clear x-ray viewing.

Bonds chemically and physically to the dentin and gutta percha.

No shrinkage: In fact, mild expansion to assure an intimate fit.

Hydrophobic nature means highly resistant to water degradation to ensure a long lasting seal.

Easily removed for post-hole preparation.

Compatible with all bonding agents and composites.

Epoxy resin chemistry is backed by 50 years of clinical success.

Subsequent composite techniques may be performed immediately.

Results of a two year recall study show a two year recall study found a success rate of 94.1%<sup>5</sup>

Fills canals quickly without sacrificing quality.<sup>4</sup>

No need for expensive thermoplastic equipment.



**Original (powder / gel) EZ-Fill and New Auto Mix EZ-Fill Xpress provides simple and superior obturation:**

*I have used the EZ-Fill System to obturate the canal after preparation & Works great! EZ-Fill is an outstanding system both for prep and obturation.*  
- Marshall White

*EZ-Fill is fast, low cost and efficient.*  
- Howard Farran

*Your inventions (SafeSiders and EZ-Fill) continue to be a welcome additions to my endodontic solutions. Thanks!*  
- Edward Dercagasits

*Being an endodontist, my years of practice have given me the opportunity to see and treat some bizarre and of course interesting cases. Since Barry introduced the EZ-Fill technique, I have had the opportunity to perfect my results while incorporating my own nuances into this technique.*  
- Douglas S. Kase

## The fast, easy, cost efficient, system for safe and thorough obturation!

### The EZ-Fill system solves traditional obturation problems.

Prior to the development of the EZ-Fill bi-directional spiral and epoxy resin root canal cement, it was impossible to coat the canal completely without high incidences of cement overfill. Gutta percha was traditionally used to occlude canals, requiring firm packing apically and laterally.

### The EZ-Fill technique results in a more efficient seal that dramatically increases the cement to canal wall interface.

Thorough obturation improves the likelihood of long-term restorative success. A recent two year recall study using EZ-Fill bi-directional spiral and epoxy resin root canal cement resulted in a success rate of 94.1% (This study utilized a sample size of 145 patients totalling 153 endodontically treated teeth).<sup>5</sup>



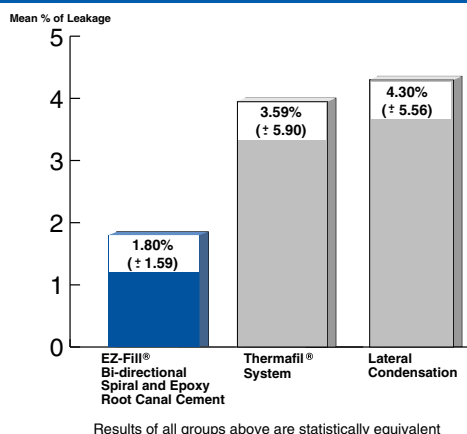
### Effective Seal

The photo (left) shows a long oval canal obturated with lateral compaction showing areas not filled with gutta percha points but completely filled with sealer.

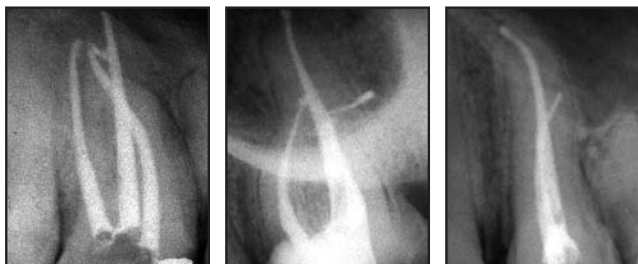
This indicates the ability of the EZ-Fill bi-directional spiral to deliver sealer into lateral invaginations with no leakage.<sup>6</sup>

For best results, use the Endo-Express® & SafeSiders® series of patented, non-circular, non-interrupted flat-sided endodontic instruments to clean and shape canals to a wider taper ideal for obturation with the EZ-Fill bi-directional spiral and epoxy resin root canal cement.

### Apical Leakage Comparison<sup>3</sup>



### Radiographs of canals obturated with the patented EZ-Fill bi-directional spiral and epoxy resin root canal cement.



1 Musikant BL, Cohen BI, Deutsch, AS. Simplifying Obturation. Dent Today 1998;17(5):134-135. 2 Lee CQ, Chang Y, Cobb CM, Robinson S, Hellmuth EM. Dimensional Stability of Thermosensitive Gutta-Percha. J Endodon 1997;23(9):579-582. 3 Cohen BI, Pagnillo MK, Musikant BL, Deutsch AS. The Evaluation of Apical Leakage for Three Endodontic Fill Systems. AGD (General Dentistry) 1998;46(6):618-623. 4 Musikant BL, Cohen BI, Deutsch AS. Simplified Obturation of Tapered Canal Preparations. Compendium 1998;19(11):1152-1155. 5 Deutsch AS, Cohen BI, Musikant BL, Kase D. A Study of One Visit Treatment Using EZ-Fill Root Canal Sealer. Practical Endodontics June 2001;4(3):29-36. 6 Wu, Van der Sluis, Ardila, Wesselink. Fluid movement along the coronal two-thirds of root fillings placed by three different gutta-percha techniques. International Endodontic Journal. 36(8):533-540, August 2003. \*U.S. Patent No. 5,632,620 & 5,803,732. European Patent No. EP 0 806 916 B1. Other patents pending.

## ORDERING INFORMATION:

<b>EZ-Fill® Bi-Directional Spiral Intro Kit - Stainless Steel:</b>	Cat. No. 1600-00
Three 25mm, one 21mm patented bi-directional spirals, 7.5gm - Epoxy root canal cement gel, 8.0gm - Powder, 1- Measuring scoop.	
<b>EZ-Fill® Bi-Directional Spiral Intro Kit - Nickel Titanium:</b>	Cat. No. 1605-00
Three 25mm, one 21mm patented bi-directional spiral 7.5gm - Epoxy root canal cement gel, 8.0gm - Powder, 1- Measuring scoop.	
<b>EZ-Fill® Epoxy Root Canal Cement Refill Kit:</b>	Cat. No. 1608-00
7.5gm - Epoxy root canal cement gel, 8.0gm - Powder, 1- Measuring scoop.	
<b>EZ-Fill® Xpress Bi-Directional Spiral Intro Kit - Stainless Steel:</b>	Cat. No. 1620-00
Three 25mm, one 21mm patented bi-directional spirals, 2- Dual barrel syringe (9.5gm each), 20 mixing tips.	
<b>EZ-Fill® Xpress Bi-Directional Spiral Intro Kit - Nickel Titanium:</b>	Cat. No. 1625-00
Three 25mm, one 21mm patented bi-directional spirals, 2- Dual barrel syringe (9.5gm each), 20 mixing tips.	
<b>EZ-Fill® Xpress Epoxy Root Canal Cement Refill Kit:</b>	Cat. No. 1628-00
2- Dual barrel syringe (9.5gm each), 20 mixing tips.	

<b>EZ-Fill Bi-Directional Spirals:</b>	SS	Four - (1- 21mm length & 3- 25mm length)	Cat. No. 1600-01
	Ni-Ti	Four - (1- 21mm length & 3- 25mm length)	Cat. No. 1605-01
	SS	Four bi-directional spirals (21mm length)	Cat. No. 1600-21
	Ni-Ti	Four bi-directional spirals (21mm length)	Cat. No. 1605-21
	SS	Four bi-directional spirals (25mm length)	Cat. No. 1600-25
	Ni-Ti	Four bi-directional spirals (25mm length)	Cat. No. 1605-25

For our complete line of patented dental products please visit our website at: [www.edsdental.com](http://www.edsdental.com)



## Endo-Express™ Mini Latch Head Contra Angle (E-Type)

Standard  
Contra Angle

Mini Head  
Contra Angle

### FEATURES

10 mm Head

E-Type Attachment

Miniature Head Contra  
Angle

### BENEFITS

Allows 22 mm of the gates glidden length to exit the head opening versus 18 mm for a standard contra angle.

Allows for teeth up to 25 mm in length to be prepared to within 3 mm of the apex with the No. 2 gates glidden.

Allows 23 mm of length of the Peeso to exit the contra angle opening allowing it to be used in canals as long as 29 mm length.

In mouths with little access, the mini head often allows the use of shorter shanked instruments. This allows for easier vertical placement of the shorter length.

It eliminates the need to have two slow speed contra angles

It fits onto the same slow speed E-Type motor as your Endo-Express handpiece.

E-Type 1:1, 30,000 RPM, Miniature Latch Head

### Part of the SafeSiders & Endo-Express systems:

These shaping systems allow canals to be shaped in 2-5 minutes.

Replace instruments because they dull, not because you fear they will break!

Reciprocation creates a balanced force, the instruments stay centered.

The 45 degree motion virtually eliminates:

- cyclic fatigue
- torsional stress
- binding
- which virtually eliminates instrument separation

Act as chisels in the clockwise and counter clockwise motion allowing you to go through the tooth and remove debris with unexpected ease.

Prevents canal distortion.

Costs 90% less then rotary NiTi on a per use basis.

## Ultrasonic Tips

### Ultrasonic Piezo Tips

As they have accomplished with other endodontic techniques, Essential Dental Systems' Ultrasonic Tips are now advancing **two key factors for endodontic success** - **Access cavity refinement and canal orifice location!**

Developed by leading Endodontists Dr. Allan Deutsch and Dr. Barry Musikant, **EDS Ultrasonic Tips now make ultrasonic procedures more cost effective, predictable, and quicker!**

#### The Cutting Tips:

Unique, scientifically designed MicroHatch cutting pattern provides:

- Highest Fracture Resistance Available
- Superior Cutting Efficiency
- Less clogging of Dentinal Debris
- Remarkable Field of View
- Made in the USA for Great Working Precision

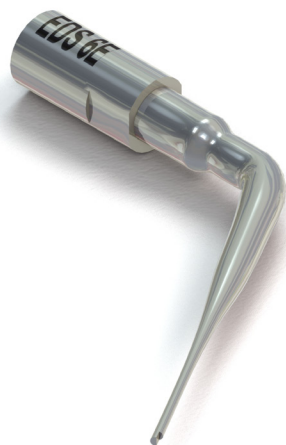
#### The Post Remover (EDS #1 Tip):

This **post removal tool** is a must have in any clinician's armamentarium. This tip is included in the introductory kit and can be purchased separately.



#### Passive Ultrasonic Irrigation (EDS #6 Tip):

Another critical instrument for endodontic success is the **EDS #6 tip for Passive Ultrasonic Irrigation (PUI)**. This tip is included in the introductory kit and can be purchased separately.



#### The EDS Ultrasonic Tip Introductory Kit:

Includes: Tip Taxi, post remover (EDS 1), 4 cutting tips (EDS 2,3,4,5), passive ultrasonic tip (EDS 6), and wrench. Available in "E" (610-00) or "M" (615-00) thread configurations - see chart below. Each item is also sold separately.

#### ADAPTABLE TO YOUR PIEZO ULTRASONIC UNIT

#### You don't have to invest in another ultrasonic unit!

EDS Ultrasonic Tips are available in two thread configurations!

See the below chart.

#### 610-xx

##### E-Threads Fit These Units:

Satelec-Acteon	Adec (Satelec)
Vista P5	J.Morita
NSK	Dentsply/Tulsa
Sybron Endo	Hu-Friedy (S series)
Obtura Spartan	EIE2

#### 615-xx

##### M-Threads Fit These Units:

EMS	Parkell
Dentamerica	Hu-Friedy (E series)
Bonart	



# EDS Ultrasonic Tips

## EDS 1

EDS 1E



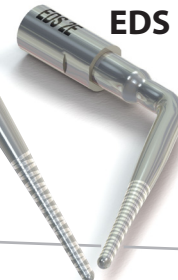
#1 (610-01 or 615-01)  
The easiest and quickest way to achieve post removal.  
Power Setting: High



#2 (610-02 or 615-02)  
Quick removal of core material and gross shaping of access opening.  
Power Setting: High

EDS 2E

## EDS 2

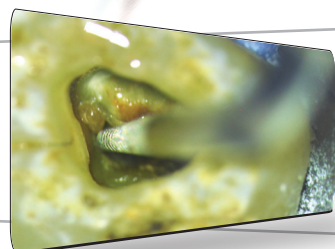
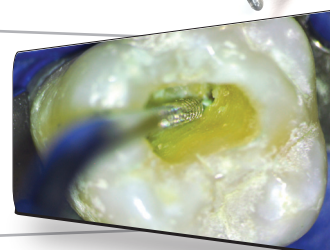


## EDS 3

EDS 3E



#3 (610-03 or 615-03)  
Access cavity wall refinement.  
Power Setting: Medium



#4 (610-04 or 615-04)  
MB2 (2nd canal in the mesio buccal root) scouting, refiner, and trougher.  
Power Setting: Medium

EDS 4E

## EDS 4

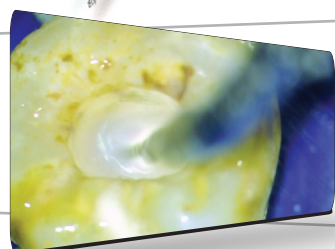
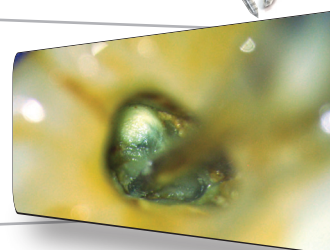


## EDS 5

EDS 5E



#5 (610-05 or 615-05)  
Canal scouting, opener, and refiner.  
Power Setting: Low-Medium



#6 (610-06 or 615-06)  
Passive Ultrasonic Irrigation (PUI)  
Ultrasonic activation of irrigant to aid in removing biologic debris and the smear layer. Using a simpler, safer, and more cost-effective technique.  
Power Setting: Low-Medium

EDS 6E

## EDS 6



(Do not contact canal walls).



Also available as individual units:  
Tip Taxi (Holds 6 EDS Ultrasonic Tips) EDS Cat. No. 690-00  
Tip Wrench EDS Cat. No. 693-00

For our complete line of patented dental products please visit our website at: [www.edsdental.com](http://www.edsdental.com)

## Endo-CHX™ 2% Chlorhexidine Gluconate Solution With Surfactant

### FEATURES

Endo-CHX™ cleared by the FDA for endodontic use

Aids in successful root canal treatment

2% Chlorhexidine Gluconate Solution with Surfactant

Light blue color

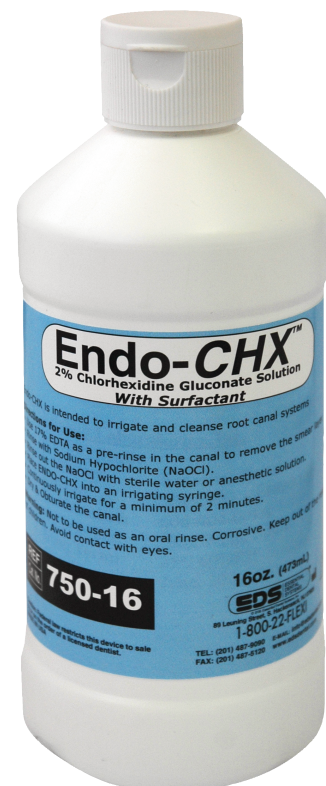
### BENEFITS

Maintain confidence while irrigating and cleansing the root canals

Irrigate and cleanse the root canal removing germs that cause infection

Provides reduced surface tension to easily flow into the dentinal tubules

Ensures easy recognition for the dentist during the irrigation procedure



Endo-CHX is available in a large economical 16 oz bottle!

### ORDERING INFORMATION:

Endo-CHX:

1- 16 oz bottle . . . . . Cat. No. 750-16

For our complete line of patented dental products please visit our website at: [www.edsdental.com](http://www.edsdental.com)

1-800-22-FLEXI • 201-487-9090 • Fax 201-487-5120 • [www.edsdental.com](http://www.edsdental.com) • [info@edsdental.com](mailto:info@edsdental.com)

Endo-CHX

## EDTA Plus

### With Surfactant

### (17% ethylenediamine tetraacetic acid sodium salt)

#### FEATURES

EDTA Plus removes the smear layer

Includes a surfactant

Light peach color

Convenient dropper bottle

#### BENEFITS

Allows penetration into the dentin tubules

Reduces surface tension improving penetration into the canal

Ensures easy recognition for the dentist during the irrigation procedure

Easy to use



EDTA Plus is available in a 2 .oz dropper bottle.

#### ORDERING INFORMATION:

EDTA Plus  
2 .oz bottle . . . . . Cat. No. 770-02

For our complete line of patented dental products please visit our website at: [www.edsdental.com](http://www.edsdental.com)

1-800-22-FLEXI • 201-487-9090 • Fax 201-487-5120 • [www.edsdental.com](http://www.edsdental.com) • [info@edsdental.com](mailto:info@edsdental.com)

## Flexi-Post®



### FEATURES

Patented split-shank design makes the post a graduated tap.

Second tier on Flexi-Post.

Parallel sided sharp threads.

Entire length of shank is vented.

Highly retentive head.

Internal and external wrench.

Technique adaptable to other Essential Dental Systems' post products.

### BENEFITS

Closes upon insertion to deliver maximum retention with minimal insertional stress - virtually eliminating the major cause of root fracture. Distributes functional stresses evenly around the embedded threads. Vertical blades remove all dental debris, enhancing ease of placement.<sup>1-5</sup>

Increases the intimacy of fit between the post and the natural point at which the canal widens, thereby increasing the stability of the post by preventing the breakdown of cement, greatly enhancing long term retention.

Cut into dentin rather than pushing it away. Maximize retention without contributing to the production of tensile stresses.<sup>6-11</sup>

Releases internal hydrostatic pressure upon cementation.

The head is highly compatible with Ti-Core® and Ti-Core® Natural. The vertical and horizontal grooves securely anchor the core material.

Larger handle for greater control. Better fit within the cross slot on post head. Easier handling and placement.

Predictable method of post placement for every clinical situation.\*



### Minimal Stress, Maximum Retention.

Flexi-Post introductory kits come complete with all necessary reamers, drills, wrenches and a special depth gauge to ensure the correct size post is used in any given clinical situation (Flexi-Post is available in five sizes: 00, 0, 1, 2, and 3, in medical grade stainless steel or titanium alloy).

*"The sharp threads and split-shank of the Flexi-Post allowed for easier insertion and presented no stress to the root!"*

*"Of all the Post Systems I have tried, I experienced the best success with the Flexi-Post"*

*"Using the Flexi-Post for 15+ years and have had great results in my practice"*

\*See Essential Dental Systems' Flexi-Flange® & Flexi-Overdenture® Attachment product profiles.  
1. Filiz K, Erdal S. "Retentive Properties Of Three Post Core Systems." Australian Dental Journal. 1994;39(1):20-24. 2. Greenfield RS, Rayhouse RH, Marshall FJ, Schoner, B. "A comparison of Two Post Systems Under Applied Compressive Shear Loads." J Prosthet Dent 1989;61:17-24. 3. Ross RS, Nicholls JJ, Harrington GW. "A Comparison of Strains Generated during Placement of Five Endodontic Posts." J Endodont 1991;17:450-456. 4. Millstein Ft, Yu H, Hsu CS, Nathanson D. "Effects of Cementing on Retention of a Prefabricated Screw Post." J Prosthet Dent 1987;57:171-174. 5. Cohen BI, Condos S, Musikant BL, Deutsch AS. "Pilot study comparing the photoelastic stress distribution for four endodontic post systems." J Oral Rehabil 1996;23:679-685. 6. Brown JD, Michem JC. "Retentive Properties of Dowel Post System." Operative Dent 1987;12:15-19. 7. Boyarsky, H, Davis, K. "Root Fracture with Dentin-Retained Posts." American J Dent 1992;5:11-14. 8. Cohen BI, Pagnillo WK, Newman I, Musikant L, Deutsch AS. "Pilot study of the cyclic fatigue characteristics of five endodontic posts with four core materials." J Oral Rehabil 2000;27:83-92. 9. Burns RD, Douglas MS, Moon PC. "Comparison of the Retention of Endodontic Posts After Preparation with EDTA." J Prosthet Dent 1993;69:262-6. 10. Cohen BI, Yalovich Y, Musikant BL, Deutsch AS. "Comparison of the Photoelastic stress properties for different post-core combinations." Oral Health 2001;91(10):63-72. 11. Cohen BI, Condos S, Musikant BL, Deutsch AS. "Retentive Properties Of Threaded Split-Shaft Posts With Titanium Reinforced Composite Cement." J Prosthet Dent 1992;68:894-8. 12. Cohen BI, Condos S, Musikant BL, Deutsch AS. "Retention Properties Of A Split-Shaft Threaded Post: Cut At Different Apical Lengths." J Prosthet Dent 1992;68:894-8.  
† For more information, ask for Essential Dental Systems' Flexi-Post Sterilization Box Product Profile. US Patent Nos. 4,480,997, 4,490,116, and Re. 31,948 and Foreign Patents.



# Flexi-Post

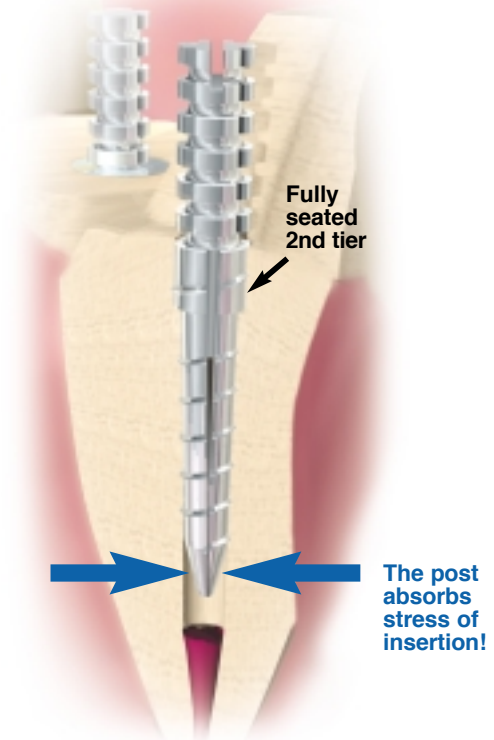
## The standard for maximum retention with minimal stress.<sup>1-11</sup>

The Flexi-Posts' unique split-shank design, absorbs and reduces the stresses of insertion, thereby eliminating the potential of vertical root fracture: safely, predictably, and repeatedly. Using the Flexi-Post, the average practitioner can complete the post and core restoration, on a single rooted tooth, in 15 minutes. In addition, Flexi-Post can be used in place of a cast post, eliminating the expense of laboratory procedures and extra chair time for fittings.

The Flexi-Posts' unique split-shank design absorbs stress of insertion by gradually closing under pressure.<sup>1-5</sup> The post conforms and adapts to the root rather than the root adapting to the post.

### Post Retention with Various Cements

In independent studies, "the Flexi-Post System displayed twice the retention of the other systems evaluated." Flexi-Post offers retention comparable to natural dentin with minimal insertional and functional stress.<sup>6-12</sup>



## TECHNICAL FACTS:

- Made of medical grade stainless steel or titanium alloy.
- More than 200,000 pounds per square inch crushing strength (250,000 pounds per square inch in titanium).

Post Number	00	0	1	2	3
Color Code.....	White	Yellow	Red	Blue	Green
Length of Head.....	3.5mm	3.5mm	4.5mm	5.5mm	6.5mm
Length of Shaft.....	7.0mm	8.0mm	10.0mm	11.0mm	13.5mm
Diameter of Shaft without Threads.....	0.75mm	0.79mm	1.0mm	1.25mm	1.50mm
Diameter of Shaft with Threads.....	0.95mm	1.07mm	1.40mm	1.65mm	1.90mm
Diameter of Primary Reamer.....	0.78mm	0.90mm	1.20mm	1.45mm	1.70mm
Length of Primary Reamer.....	8.0mm	9.0mm	11.0mm	12.0mm	14.5mm
Second Tier.....	No	Yes	Yes	Yes	Yes

## ORDERING INFORMATION:

	Stainless Steel	Titanium		Stainless Steel	Titanium
Flexi-Post Assorted Kit (Sizes 0, 1, 2)	Cat. No. 110-00	115-00	Flexi-Post Economy Refills		
12 posts (4 posts each of 3 sizes and Accessories)			(30 posts of one size, reamer & drill)		
Flexi-Post Assorted Kit (Sizes 1,2,3)	Cat. No. 110-01	115-01	Size 00	Cat. No. 140-00	145-00
12 posts (4 posts each of 3 sizes and accessories)			Size 0	Cat. No. 140-0	145-0
Flexi-Post Standard Kits			Size 1	Cat. No. 140-01	145-01
(10 posts of one size and accessories)			Size 2	Cat. No. 140-02	145-02
Size 00	Cat. No. 120-00	125-00	Size 3	Cat. No. 140-03	145-03
Size 0	Cat. No. 120-0	125-0	Flexi-Post Sterilization Box (Complete)	Cat. No. 197-01	197-02
Size 1	Cat. No. 120-01	125-01	50 posts (10 posts each of 5 sizes and accessories)		
Size 2	Cat. No. 120-02	125-02	Flexi-Post Mini Steri Box (Complete)	Cat. No. 197-05	197-06
Size 3	Cat. No. 120-03	125-03	10 posts (2 posts each of 5 sizes and accessories)		
Flexi-Post Refills			Flexi-Post Combi Sterilization Box	Cat. No. 197-07	197-03
(10 posts of one size, reamers & drill)			16 posts (12 Flexi-Post: 4 posts each of 3 sizes, 0-1-2		
Size 00	Cat. No. 130-00	135-00	4 Overdenture posts: 2 posts each of 2 sizes, 1-2 and accessories)		
Size 0	Cat. No. 130-0	135-0			
Size 1	Cat. No. 130-01	135-01			
Size 2	Cat. No. 130-02	135-02			
Size 3	Cat. No. 130-03	135-03			
All Flexi-Post accessories available separately.					

For our complete line of patented dental products please visit our website at: [www.edsdental.com](http://www.edsdental.com)



# Flexi-Post® Fiber



## FEATURES

The highest fiber post in-tooth retention.\*

The **ONLY** fiber posts providing high retention **WITHOUT** the need for a bonding agent.

Threaded retention without insertional stress.

Multiple tiers provide stability unlike any dowel fiber post.

Second tier on Flexi-Post Fiber.

Entire length of shank is vented.

Highly retentive head.

Tooth colored

Low profile

Technique adaptable to other Essential Dental Systems' Flexi-Flange Fiber Post

## BENEFITS

Provides long-term clinical success.

Provides the dentist with an easy technique and shortened chairtime.

The patented split-tap closes on insertion to deliver maximum retention with minimal stress.

Distribute functional stresses to the strongest part of the root.

Resistance to post loosening and post fracture.

Increases the intimacy of fit between the post and the natural point at which the canal widens, thereby increasing the stability of the post by preventing the breakdown of cement, greatly enhancing long term retention.

Releases internal hydrostatic pressure upon cementation.

The head is highly compatible with Ti-Core® composite core material products. The vertical and horizontal grooves securely anchor the core material.

Perfect for any aesthetic restoration.

Preserves coronal tooth structure.

Predictable method of post placement for every clinical situation (Flexi-Flange Fiber is recommended when choosing a fiber post in clinical cases with little or no coronal dentin).



Taps are color-coded to match post sizes.

## The Patented Split-Shank Tap

During tap insertion and thread pattern creation, the stresses of insertion are absorbed by the tap (not the root) - virtually eliminating the major cause of root fracture. Vertical blades remove dentinal debris, enhancing ease of post placement.

Flexi-Post Fiber and Flexi-Flange Fiber predictably provide maximum retention with minimal stress. Without the need for a bonding agent.

\* Data on File

# Flexi-Post Fiber

## NOT JUST ANOTHER “DOWEL” FIBER POST

Serrated Head permits greater retention of core material.

The Second Tier of the Shank increases the intimacy of fit between the post and the natural point at which the canal widens, thereby reducing destructive long lever arms.

The Flexi-Post Fiber Vent releases internal hydrostatic pressure upon cementation.

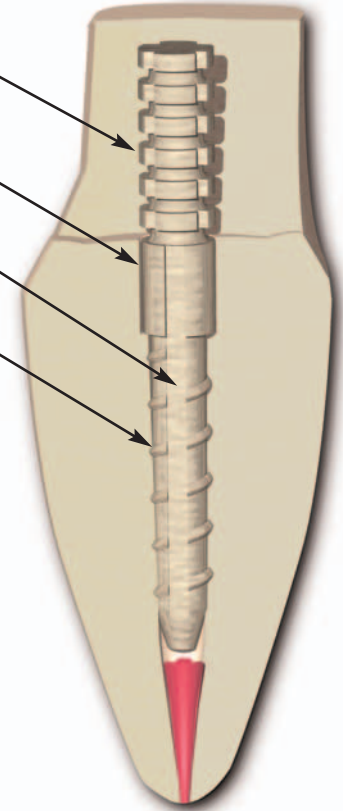
Threaded design to have greater retention than passive fiber posts without the need for a bonding agent.

**MADE FROM PROPRIETARY, EPOXY REINFORCED, HIGH STRENGTH S-GLASS FIBER!**

### TECHNICAL FACTS:

Post Number	0	1	2
Color Code	YELLOW	RED	BLUE
Length of Head	3.50mm	4.50mm	5.50mm
Length of Shaft	7.75mm	9.90mm	10.90mm
Total Length of Post	11.25mm	14.40mm	16.40mm
Diameter of Shaft (Without Threads)	0.88mm	1.09mm	1.22mm
Diameter of Shaft(With Threads)	1.17mm	1.45mm	1.65mm
Diameter of Primary Reamer	0.90mm	1.20mm	1.45mm
Length of Primary Reamer (Cutting Portion of Shank)	9.00mm	11.00mm	12.00mm
Modulus of Elasticity	41 GPa	41 GPa	41 GPa

Made from a proprietary, reinforced epoxy, high strength S-glass fiber.



### ORDERING INFORMATION:

#### Flexi-Post Fiber Intro Kits:

##### 12 Post Intro Kit . . . Cat. No. 2110-00

Size 0 (Yellow):

6-posts, 1-tap, 1-primary reamer, 1-secondary drill

Size 1 (Red):

6-posts, 1-tap, 1-primary reamer, 1-secondary drill

External Wrench (Fits both post sizes), 1-Depth Gauge.

##### 12 Post Intro Kit . . . Cat. No. 2110-01

Size 1 (Red):

6-posts, 1-tap, 1-primary reamer, 1-secondary drill

Size 2 (Blue):

6-posts, 1-tap, 1-primary reamer, 1-secondary drill

External Wrench (Fits both post sizes), 1-Depth Gauge.

#### Flexi-Post Fiber Refill Kits:

##### 10 Post Refill Kit Size 0 (Yellow) Cat. No. 2130-0

10-posts, 1-tap, 1-primary reamer, 1-secondary drill.

##### 10 Post Refill Kit Size 2 (Blue) Cat. No. 2130-02

10-posts, 1-tap, 1-primary reamer, 1-secondary drill.

##### 10 Post Refill Kit Size 1 (Red) Cat. No. 2130-01

10-posts, 1-tap, 1-primary reamer, 1-secondary drill.

**Taps:** Tap for Size 0 Flexi-Post Fiber and Flexi-Flange Fiber Posts Cat. No. 2150-0

Tap for Size 1 Flexi-Post Fiber and Flexi-Flange Fiber Posts Cat. No. 2150-01

Tap for Size 2 Flexi-Post Fiber and Flexi-Flange Fiber Posts Cat. No. 2150-02

**For our complete line of patented dental products please visit our website at: [www.edsdental.com](http://www.edsdental.com)**

## Flexi-Flange®

Flexi-Flange is a patented prefabricated post designed to reduce the incidence of root and post fractures significantly - especially where there is little or no coronal dentin.

### FEATURES

Stabilizing Flange.

Patented split shank design.

Triple-tiered design.

Adaptable technique.

Available in four sizes.

### BENEFITS

Protects retention of the post in any tooth with inadequate dentin.

Maximizes dentin-to-metal contact to distribute destabilizing stresses over a large area. Reduces stress concentrations at any one point.<sup>1,2</sup>

Solidifies the entire restoration for optimum resistance to micromovement and resulting wear.

Closes on insertion to deliver maximum retention with minimal stress.<sup>1,7</sup>

All three tiers combine to: Distribute functional stresses to the strongest part of the root.<sup>8-10</sup>

Provide resistance to post loosening and root/post fracture.<sup>8-10</sup>

Predictable method of post placement for every clinical situation.

Meets all your post needs.



### Simple technique. Excellent results.

Flexi-Flange is easy to place. The patented split shank of Flexi-Flange closes during insertion, conforming to the root and minimizing stress. Surgically sharp threads coupled with the second tier and split shank provide maximum retention with no more stress than a passive post.<sup>1-7</sup>

Once you try Flexi-Flange you'll find yourself trusting its strength and stability more and more.

<sup>1</sup> Cohen BI, Musikant BL, Deutsch AS. "Comparison of the Photoelastic Stress for a Split-Shank Threaded Post Versus a Threaded Post." J Prosthetics 1994;3:53-55. <sup>2</sup> Cohen BI, Condos S, Musikant BL, Deutsch AS. "Pilot Study Comparing the Photoelastic Stress Distribution for Four Endodontic Post Systems." J Oral Rehabilitation 1996;23:679-685. <sup>3</sup> Greenfield RS, Royhouse RH, Marshall FJ, Schoner, B. "A comparison of Two Post Systems Under Applied Compressive Shear Loads." J of Prost Dent, 1989;61:17-24. <sup>4</sup> Ross RS, Nicholls JL, Harrington GW. "A Comparison of Strains Generated during Placement of Five Endodontic Posts." J Endodontics 1991;17:450-456. <sup>5</sup> Millstein PL, Yu H, Hsu CS, Nathanson D. "Effects of Cementing on Retention of a Prefabricated Screw Post." J Prost Dent 1987;57:171-174. <sup>6</sup> Brown JD, Mitchem JC. "Retentive Properties of Dowel Post System." Operative Dentistry 1987;12:15-19. <sup>7</sup> Cohen BI, Pagnillo M, Condos S, Deutsch AS. "Comparison of the Torsional Forces at Failure for Seven Endodontic Post Systems." J Prosthet Dent 1995;74(4):350-7. <sup>8</sup> Cohen, BI, Deutsch, AS, Musikant, BL. "Cyclic Fatigue Testing of Six Endodontic Post Systems." J Prosthetics. 1993;2:28-32. <sup>9</sup> Cohen BI, Pagnillo MK, Newman I, Musikant L, Deutsch AS. Pilot study of the cyclic fatigue characteristics of five endodontic posts with four core materials. J Oral Rehabil 2000;27:83-92. <sup>10</sup> Cohen BI, Musikant BL, Deutsch AS. "Clinical usage of the Flexi-Flange post system." Dental News 1995;Vol. II (III):33-36. US Patent Nos. 4,480,997, 4,490,116, and Re. 31,948. Other Foreign Patents Pending.

# Flexi-Flange

## Once seated, Flexi-Flange stays seated.

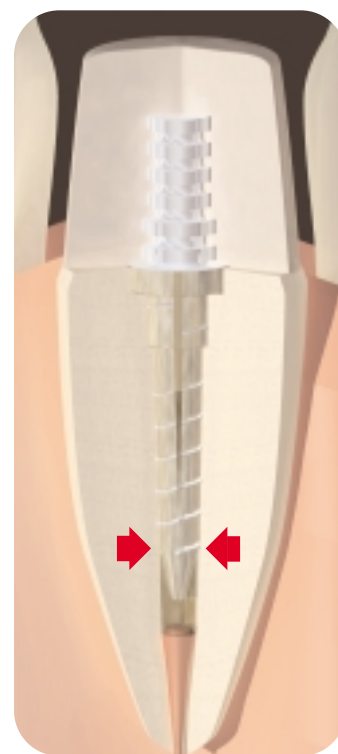
Like the original split shank Flexi-Post, the patented split shank Flexi-Flange adapts to the root by closing during insertion. No other post can offer as much retention with so little stress.<sup>1-7</sup>

## Dissipates occlusal forces to eliminate stress fractures.

Flexi-Flange incorporates a scientifically designed and proven flange that countersinks completely into tooth structure for maximum dentin-to-metal contact.

During mastication, the flange maximizes fracture resistance of the root and post by safely dispersing occlusal forces over a broad area.

Combined with the second tier, which adapts to the natural flare of the canal, Flexi-Flange reduces stress concentrations that cause fractures, while post strength and retention are dramatically increased overall.<sup>5-9</sup>



## TECHNICAL FACTS:

Post Number	0	1	2	3
Color Code	YELLOW	RED	BLUE	GREEN
Post:				
Length of Head	4.00mm	5.00mm	6.00mm	7.00mm
Length of Shaft	8.00mm	9.50mm	10.50mm	13.00mm
Length of Primary Reamer	9.50mm	11.00mm	12.00mm	14.50mm
Diameter of:				
Shaft w/o Threads	0.79mm	1.00mm	1.25mm	1.50mm
Shaft With Threads	1.07mm	1.40mm	1.65mm	1.90mm
Primary Reamer	0.90mm	1.20mm	1.45mm	1.70mm
Gates Glidden	0.70 (#2)	1.10mm (#4)	1.30mm (#5)	1.50mm (#6)
Peeso	0.70 (#1)	1.10mm (#3)	1.30mm (#4)	1.50mm (#5)

## ORDERING INFORMATION:

	<u>Stainless Steel</u>	<u>Titanium</u>
Flexi-Flange Introductory Kit (Sizes 0,1,2) . . . . .	Cat. No. 410-00	415-00
12 posts (4 posts each of 3 sizes and accessories)		
Flexi-Flange Refills		
(10 posts of one size, reamer & countersink drill)		
Size 0 . . . . .	Cat. No. 430-0	435-0
Size 1 . . . . .	Cat. No. 430-01	435-01
Size 2 . . . . .	Cat. No. 430-02	435-02
Size 3 . . . . .	Cat. No. 430-03	435-03

All Flexi-Flange accessories available separately.

For our complete line of patented dental products please visit our website at: [www.edsdental.com](http://www.edsdental.com)

# Flexi-Flange® Fiber



## FEATURES

The highest fiber post in-tooth retention.\*

The ONLY fiber posts providing high retention WITHOUT the need for a bonding agent.

Threaded retention without insertional stress.

Multiple tiers provide stability unlike any dowel fiber post.

Flange and Second tier on Flexi-Flange Fiber.

Entire length of shank is vented.

Highly retentive head.

Tooth colored

Technique adaptable to other Essential Dental Systems' Flexi-Post Fiber Post

## BENEFITS

Provides long-term clinical success.

Provides the dentist with an easy technique and shortened chairtime.

The patented split-tap closes on insertion to deliver maximum retention with minimal stress.

Distribute functional stresses to the strongest part of the root.

Provide resistance to post loosening and post fracture.

Increases the intimacy of fit between the post and the natural point at which the canal widens, thereby increasing the stability of the post by preventing the breakdown of cement, greatly enhancing long term retention.

Releases internal hydrostatic pressure upon cementation.

The head is highly compatible with Ti-Core®, composite core material products. The vertical and horizontal grooves securely anchor the core material.

Perfect for any aesthetic restoration.

Predictable method of post placement for every clinical situation. (Flexi-Post Fiber is recommended in cases with coronal dentin in order to preserve coronal tooth structure).



Taps are color-coded to match post sizes.

## The Patented Split-Shank Tap

During tap insertion and thread pattern creation, the stresses of insertion are absorbed by the tap (not the root) - virtually eliminating the major cause of root fracture. Vertical blades remove dentinal debris, enhancing ease of post placement.

Flexi-Post Fiber and Flexi-Flange Fiber predictably provide maximum retention with minimal stress. Without the need for a bonding agent.

\* Data on File



# Flexi-Flange Fiber

## NOT JUST ANOTHER “DOWEL” FIBER POST

Serrated Head permits greater retention of core material.

The Second Tier and Flange increases the intimacy of fit between the post and the natural point at which the canal widens, thereby reducing destructive long lever arms.

The Flexi-Post Fiber Vent releases internal hydrostatic pressure upon cementation.

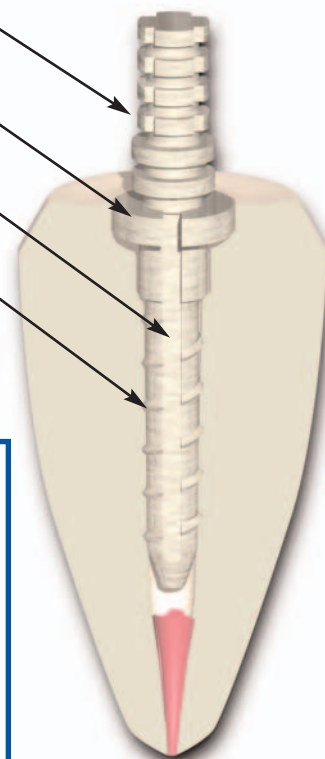
Threaded design to have greater retention than passive fiber posts without the need for a bonding agent.

**MADE FROM PROPRIETARY, EPOXY REINFORCED, HIGH STRENGTH S-GLASS FIBER!**

### TECHNICAL FACTS:

Post Number	0	1	2
Color Code	YELLOW	RED	BLUE
Length of Head	4.0mm	5.0mm	6.0mm
Length of Shaft	8.0mm	9.5mm	10.4mm
Total Length of Post	12.0mm	14.50mm	16.4mm
Diameter of Shaft (Without Threads)	0.88mm	1.09mm	1.22mm
Diameter of Shaft(With Threads)	1.17mm	1.45mm	1.65mm
Diameter of Primary Reamer	0.90mm	1.20mm	1.45mm
Length of Primary Reamer (Cutting Portion of Shank)	9.00mm	11.00mm	12.00mm
Modulus of Elasticity	41 GPa	41 GPa	41 GPa

Made from a proprietary, reinforced epoxy, high strength S-glass fiber.



### ORDERING INFORMATION:

#### Flexi-Flange Fiber Intro Kits:

##### 12 Post Intro Kit . . . Cat. No. 2410-00

Size 0 (Yellow):

6-posts, 1-tap, 1-primary reamer, 1-countersink drill

Size 1 (Red):

6-posts, 1-tap, 1-primary reamer, 1-countersink drill

External Wrench (Fits both post sizes), 1-Depth Gauge.

##### 12 Post Intro Kit . . . Cat. No. 2410-01

Size 1 (Red):

6-posts, 1-tap, 1-primary reamer, 1-countersink drill

Size 2 (Blue):

6-posts, 1-tap, 1-primary reamer, 1-countersink drill

External Wrench (Fits both post sizes), 1-Depth Gauge.

#### Flexi-Flange Fiber Refill Kits:

##### 10 Post Refill Kit Size 0 (Yellow) Cat. No. 2430-0

10-posts, 1-tap, 1-primary reamer, 1-countersink drill.

##### 10 Post Refill Kit Size 2 (Blue) Cat. No. 2430-02

10-posts, 1-tap, 1-primary reamer, 1-countersink drill.

##### 10 Post Refill Kit Size 1 (Red) Cat. No. 2430-01

10-posts, 1-tap, 1-primary reamer, 1-countersink drill.

**Taps:** Tap for Size 0 Flexi-Post Fiber and Flexi-Flange Fiber Posts Cat. No. 2150-0

Tap for Size 1 Flexi-Post Fiber and Flexi-Flange Fiber Posts Cat. No. 2150-01

Tap for Size 2 Flexi-Post Fiber and Flexi-Flange Fiber Posts Cat. No. 2150-02

**For our complete line of patented dental products please visit our website at: [www.edsdental.com](http://www.edsdental.com)**

## AccessPost™

### The Passive Post System



#### FEATURES

Thick-Walled,  
Hollow Tube  
design.

Undercuts of head  
and shank.

Multiple tiers.

Positive seating  
head.

Highly retentive head  
with undercuts.

Optional Extra  
Retention Kit.

Optional  
Retreatment Kit.

#### BENEFITS

Provides the strength of a solid shank post.<sup>1-4</sup>

Vents hydrostatic pressure of cementation, for easier post placement and a more secure cement interface.

Offers the ability to remove a post, should there be a failed root canal, without surgically widening the canal.<sup>5-6</sup>

Guides Retreatment Drills for safe post removal and access to the apex.

Provides excellent core material retention. Resists rotation of core material. Locks-in post cement to provide high retention of shank.

Countersinking the post into the tooth prevents high apical stress under function common to other passive posts.<sup>7</sup>

Adapts to anatomical flare of canal for optimum dentin-to-metal contact and maximum stability.

Stabilizes restoration by resting on tooth structure. Safely dissipates stresses of occlusion.

Offers additional surface area for core material adaptation resulting in stronger retention.

Grooves the post hole dentin for enhanced retention<sup>4</sup> (Kit contains 2 grooving drills and Flexi-Flow<sup>®</sup> cement.).

For failed root canals, routine, non-surgical post removal and access to the apex for retreatment.



Thick walled, hollow tube design

Highly retentive  
head with undercuts

Positive seating head

Second tier

Undercuts of shank

**EDS' AccessPost** provides more advantages than any other passive post. The patented, thick-walled, hollow tube design and the undercuts of the head and shank offer . . . **Strength, Retention, and Stability** . . . with the added insurance policy of **Retreatability**. All at a competitive cost to the dentist.

1 Cohen BI, Deutsch AS, Musikant BL, "Cyclic Fatigue Testing of Six Endodontic Post Systems" Journal of Prosthodontics, 1993;2:28-32.

2 Cohen BI, Condos S, Deutsch AS, Musikant BL, "Cyclic Fatigue Testing of Seven Endodontic Post Systems" Journal of Dental Research, 1993;72:305.

3 Rovatti L, Dallari D, Mason PN, "A New System of Endodontic Retention." Journal of Attualita Dentale, 1994;18.

4 Cohen BI, Musikant BL, Deutsch AS, "Comparison of the Retentive Properties of Two Hollow Post Systems to a Solid Post Design." Journal of Prosthetic Dentistry, 1993;70:234-238.

5Cohen BI, Pagnillo MK, Condos S, Musikant BL, Deutsch AS, "Post Removal Using A Thick-Walled Hollow Tube Post Design." Oral Health, 1994;84(#11):15-22.

6Cohen BI, Musikant BL, Deutsch AS. "The AccessPost and It's Clinical Use." Dentistry Today, 1995;14:88-89.

7Cohen BI, Condos S, Musikant BL, Deutsch AS. "Pilot study comparing the photoelastic stress distribution for four endodontic post systems." Journal of Oral Rehabilitation 1996;23:679-685.

## A new dimension in passive post technology.

### STRENGTH, RETENTION & STABILITY

While the **EDS** AccessPost is a hollow tube, its thick walls, under cyclic fatigue testing, demonstrate the strength of a solid shank post.<sup>1-2</sup>

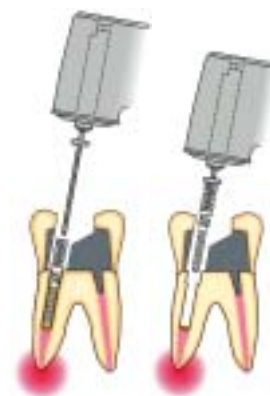
The **EDS** AccessPost head is grooved with undercuts that secure higher retention of the core material and resistance to rotation. The result is a more intimate and secure dentin-to-cement interface.

**EDS'** AccessPost is superior in still other ways. The second tier prevents "bottoming out" which eliminates the high apical stresses under function common to other passive posts. The second tier actually compensates for the natural anatomical flare of the canal for optimum dentin-to-metal contact, even distribution of stresses and maximum retention.

### INSURANCE POLICY OF RETREATMENT

The **EDS** AccessPost offers the dentist an insurance policy that was never available before for failed root canals: endodontic retreatment becomes a routine procedure. Even in the best of circumstances, post removal and endodontic retreatment is a difficult situation. Unless **EDS'** AccessPost was placed in the initial restoration.

The thick walled, hollow-tube design provides a safe guide for special retreatment drills, allowing routine removal of posts **without widening the canal**.



### TECHNICAL FACTS:

Post Number	0	1	2	3
Color Code	YELLOW	RED	BLUE	GREEN
Post:				
Length of Head	4.00mm	5.00mm	6.00mm	7.00mm
Length of Shaft	7.50mm	9.00mm	10.00mm	12.00mm
Total Length	11.50mm	14.00mm	16.00mm	19.00mm
Diameter of Shaft	0.80mm	1.10mm	1.35mm	1.60mm
Diameter of:				
Primary Reamer	0.90mm	1.20mm	1.45mm	1.70mm
Gates Glidden	0.70 (#2)	1.10mm (#4)	1.30mm (#5)	1.50mm (#6)
Peeso	0.70 (#1)	1.10mm (#3)	1.30mm (#4)	1.50mm (#5)

### ORDERING INFORMATION:

Introductory Kit: ..... Cat. No. 500-00  
Consists of 16 retreatable passive posts (4 ea. of sizes 0, 1, 2, 3) 4 primary reamers, 4 secondary drills and 5 gates glidden reamers.

Introductory Kit: ..... Cat. No. 500-12  
Consists of 12 retreatable passive posts (4 ea. of sizes 0, 1, 2) 3 primary reamers, 3 secondary drills and 5 gates glidden reamers.

Refills: ..... Size 0	Cat. No. 530-0	Size 1	Cat. No. 530-01
10 posts of one size. .... Size 2	Cat. No. 530-02	Size 3	Cat. No. 530-03
Economy Refills: ..... Size 0	Cat. No. 540-0	Size 1	Cat. No. 540-01
25 posts of one size. .... Size 2	Cat. No. 540-02	Size 3	Cat. No. 540-03

For our complete line of patented dental products please visit our website at: [www.edsdental.com](http://www.edsdental.com)

## AccessPost™ Overdenture

### The OVD Post System with More Advantages

Thick walled, hollow tube design

Ball and socket attachment allows rotation of the denture

Stabilizing flange

Second tier

Undercuts of shank



#### FEATURES

Ball and socket attachment

Thick-Walled,  
Hollow Tube  
design.

Undercuts of the  
shank.

Multiple tiers.

Standard Nylon Cap

System allows for  
the incorporation of  
the EZ-Change®  
attachment.

#### BENEFITS

Allows rotation of the denture attachment. No need for parallelism.

Provides the strength of a solid shank post.<sup>1-4</sup>  
Vents hydrostatic pressure of cementation, for easier post placement and a more secure cement interface.

Offers the ability to remove a post, should there be a failed root canal, without surgically widening the canal.<sup>5</sup>

Guides Retreatment Drills for safe post removal and access to the apex.

Locks-in post cement to provide high retention.

Provide greater stability of the post and dissipate forces of occlusion that otherwise may fracture the post or root.

Adapts to anatomical flare of canal for optimum dentin-to-metal contact and maximum stability.

Provides 3 to 5 pounds of retention. Easily replaced at low cost with in-office procedure.

Provides 3 to 5 pounds of retention. The patented metal keeper and nylon cap insert system allows for "quick and easy" nylon cap replacement. When worn, this cap may be easily removed, requiring only seconds for replacement and considerably shortening chair time.



#### EDS' AccessPost

Overdenture provides more advantages than any other passive Overdenture post. The patented, thick-walled, hollow tube design, stabilizing flange, and the undercuts of the shank offer . . .

**Strength, Retention, and Stability . . .**

with the added insurance policy of **Retreatability.** All at a competitive cost to the dentist.

1 Cohen BI, Deutsch AS, Musikant BL. "Cyclic Fatigue Testing of Six Endodontic Post Systems" Journal of Prosthodontics 1993;2:28-32.  
2 Cohen BI, Condos S, Deutsch AS, Musikant BL. "Cyclic Fatigue Testing of Seven Endodontic Post Systems" Journal of Dental Research, 1993;72:305.  
3 Rovatti L, Dallari A, Mason PN. "A New System of Endodontic Retention" Journal of Attualita Dentale, 1994;18.  
4 Cohen BI, Musikant BL, Deutsch AS. "Comparison of the Retentive Properties of Two Hollow Post Systems to a Solid Post Design" Journal of Prosthetic Dentistry 1993;70:234-238.  
5 Cohen BI, Pagnillo MK, Condos S, Musikant BL, Deutsch AS. "Post Removal Using A Thick-Walled Hollow Tube Post Design" Oral Health 1994;84(11):15-22.  
6 Leung, T, Preiskel, HW. "Retention Profiles of Stud-Type Precision Attachments." International Journal of Prosthodontics. 1991;4:175-179.  
7 Cohen BI, Pagnillo MK, Condos S, Deutsch AS. "Comparative Study Of Two Precision Overdenture Attachment Designs" Journal of Prosthetic Dentistry 1996;76(2):145-152.  
8 Epstein DD, Epstein PL, Cohen BI, Pagnillo MK. "A comparison of the retentive properties of six different overdenture attachment systems" J Prosthet Dent 1999;82:579-84.0  
9Data on file. Essential Dental Systems, Inc.

## STRENGTH, RETENTION & STABILITY

While the **EDS** Accesspost Overdenture is a hollow tube, it's thick walls demonstrate the strength of a solid shank post.<sup>1-2</sup>

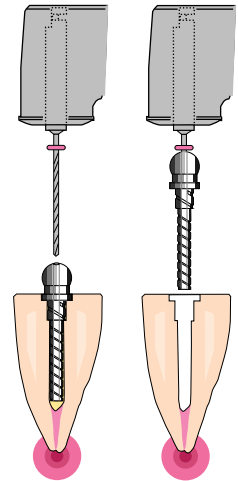
The **EDS** AccessPost Overdenture is superior to any other passive overdenture. The flange and second tier dissipate functional stresses and prevents "bottoming out" eliminating the high apical stresses under function common to other passive posts.

The **EDS** AccessPost Overdenture EZ-Change® attachment is a patented keeper and cap system that allows for "quick and easy" nylon cap insert replacement, while utilizing the **EDS** AccessPost Overdenture thick wall, hollow tube system. A metal keeper is permanently cold cured into the denture to hold a threaded nylon cap insert. When worn, this cap insert may easily be removed, requiring only seconds for replacement, thereby considerably shortening chair time.

## INSURANCE POLICY OF RETREATMENT

The **EDS** AccessPost Overdenture offers the dentist an insurance policy that was never available before for failed root canals: endodontic retreatment becomes a routine procedure. Even in the best of circumstances, post removal and endodontic retreatment is a difficult situation. Unless **EDS'** AccessPost was placed in the initial restoration.

The thick walled, hollow-tube design provides a safe guide for special retreatment drills, allowing routine removal of posts **without widening the canal.**<sup>5</sup>



## TECHNICAL FACTS:

Post Number	1	2	3
Color Code	RED	BLUE	GREEN
Post:			
Length of Head	3.20mm	3.20mm	3.20mm
Length of Shaft	9.00mm	10.00mm	12.00mm
Total Length of Post	12.20mm	13.20mm	15.20mm
Height of Head with Attachment Cap	4.00mm	4.00mm	4.00mm
Diameter of Shaft	1.10mm	1.35mm	1.60mm
Diameter of Primary Reamer	1.20mm	1.45mm	1.70mm
Length of Primary Reamer	11.00mm	12.00mm	14.50mm

## ORDERING INFORMATION:

### Introductory Kits:

Direct Introductory Kit (4 posts ea. of sizes 1, 2, & accessories) . Cat. No. 510-00  
Indirect Introductory Kit (4 posts ea. of sizes 1, 2, & accessories) Cat. No. 515-00

### Refills:

Direct Refill Kits  
(6 posts, reamer, drill) #1 . . . . . Cat. No. 520-01  
#2 . . . . . Cat. No. 520-02  
#3 . . . . . Cat. No. 520-03  
Indirect Refill Kits  
(6 posts, reamer, drill) #1 . . . . . Cat. No. 525-01  
#2 . . . . . Cat. No. 525-02  
#3 . . . . . Cat. No. 525-03

### Accessories:

Nylon Attachment Caps (6 female overdenture caps, w/ rubber bands.  
For use in direct & indirect techniques) . . . . . Cat. No. 580-01

### EZ-Change®:

Intro Kit (2 Keepers, 2 cap inserts, 2 rubber bands, EZ-Change wrench) . . . . . Cat. No. 550-00  
Keeper & Cap Inserts (2 Keepers, 2 cap inserts, 2 rubber bands) Cat. No. 550-01  
Cap Inserts (6 cap inserts) . . . . . Cat. No. 550-02  
EZ-Change Wrench . . . . . Cat. No. 550-03

For our complete line of patented dental products please visit our website at: [www.edsdental.com](http://www.edsdental.com)



## Flexi-Overdenture®

Based upon a patented split shank post, the ball and socket attachment delivers all the benefits of the Flexi-Post for highest retention of full and partial dentures. Provides a simple, inexpensive overdenture at chairside.



The optional EZ-Change patented keeper & cap insert allows for "quick and easy" nylon cap replacement. When worn, the cap insert may be easily removed from the permanent metal keeper, requiring only seconds for replacement.

### FEATURES

Patented split shank design.

Flange and second tier.

Attachment can be placed without lab assistance.

Patient-friendly.

Ball and socket attachment.

Standard Nylon Cap.

System allows for the incorporation of the EZ-Change attachment.

Countersink drill/root facer.

Technique adaptable to other Essential Dental Systems' post products.\*

### BENEFITS

Delivers maximum retention with minimal stress.<sup>1,7</sup>

Provides greater stability of the post and dissipates forces of occlusion that otherwise fracture the post or root.<sup>8-9</sup>

Produces quick, easy, economical results completely at chairside.<sup>10</sup>

Easy for patient to use: easy to place, easy to clean.

Allows rotation of the denture attachment. No need for parallelism.

Provides 3 to 5 pounds of retention. Easily replaced at low cost with in-office procedure.<sup>11-12</sup>

Provides 3 to 5 pounds of retention. The patented metal keeper and nylon cap insert system allows for "quick and easy" nylon cap replacement. When worn, this cap may be easily removed, requiring only seconds for replacement and considerably shortening chair time.<sup>11-12</sup>

Allows the dentist to seat the flange deeper into the tooth in cases where occlusal space is limited.

Gives the practitioner the ability to perfect one technique for a variety of clinical situations.



### THE ESSENTIAL DIFFERENCES BETWEEN FLEXI-OVERDENTURE AND EVERY OTHER OVERDENTURE

#### Small Head Of Male Attachment

Limits the amount of material that has to be removed from the denture.

#### Proximity Of Male Attachment To The Root

Minimizes stresses under function.

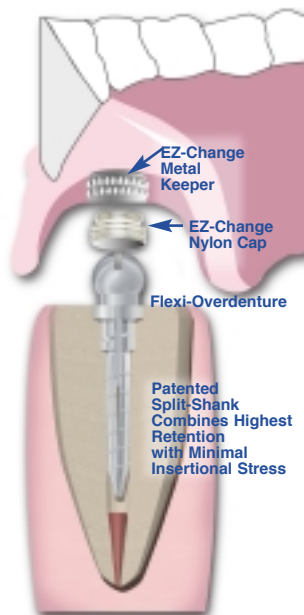
#### Super Tough Female Attachment

Incorporates easily into the denture or metal keeper for maximum retention. Replaces easily after long wear. Prevents harmful impact when placed over male attachment.

Absorbs the stresses of occlusion. Adapts simply into the denture without lab work.

<sup>1</sup>Cohen, B.I., Muskant, B.L., Deutsch, A.S. Comparison of retentive properties of four post system. J. Prosthet Dent. 1992;68:264-8.  
<sup>2</sup>Fritz, K., Erdal, S. Retentive properties of three post-core systems. Australian Dental Journal 1994;39(1):20-24.  
<sup>3</sup>Cohen, B.I., Muskant, B.L., Deutsch, A.S. Comparison of the photoelastic stress for a split-shank threaded post versus a threaded post. Journal of Prosthodontics 1994;3:53-55.  
<sup>4</sup>Greenfield RS, Royhouse RH, Marshall FJ, Schoner, B. "A comparison of Two Post Systems Under Applied Compressive Shear Loads". J. of Prosthet. Dent., 1989;61:17-24.  
<sup>5</sup>Millstein PL, Yu H, Hsu CS, Nathanson D. "Effects of Cementing on Retention of a Prefabricated Screw Post". J. Prosthet. Dent. 1987;57:171-174.  
<sup>6</sup>Ross, RS, Nicholls JJ, Harrington, GW. A comparison of strains generated during placement of five endodontic posts. Journal of Endodontics. 1991;17:450-456.  
<sup>7</sup>Brown JD, Mitchell JC. "Retentive Properties of Dowel Post System." Operative Dentistry. 1987;12:15-18.  
<sup>8</sup>Cohen, B.I., Deutsch, A.S., Muskant, B.L. "Cyclic Fatigue Testing of Six Endodontic Post Systems." J. of Prosthetics. 1993;2:28-32.  
<sup>9</sup>Cohen, B.I., Condos, S., Deutsch, A.S., Muskant, B.L. "Cyclic Fatigue of Seven Endodontic Post Systems." J. of Dent. Research. 1993;Abstract #1616/305.  
<sup>10</sup>Muskant, B.L., Cohen, B.I., Deutsch, A.S. Replacement Insert Makes Denture and Post Connection Easier. Dentistry Today. 1995;14(11):116-117.  
<sup>11</sup>Cohen BI, Muskant BL, Pagnillo M, Condos S, Deutsch AS. Comparative study of two precision overdenture attachment designs. J Prosthet Dent 1996;76(2):145-152.  
<sup>12</sup>Leung, T., Preiskel, HW. Retention Profiles of Stud-Type Precision Attachments. International Journal of Prosthodontics. 1991;4:175-179.

# Flexi-Overdenture



## An overdenture that's supported by the split-shank Flexi-Post delivers maximum retention with minimal stress.<sup>1-7</sup>

The unique split-shank prevents root fracture, and absorbs stress by gradually closing during placement. Insertion is easier and cleaner because the split shank creates vertical blades which sweep debris into the split.

Additionally, you get a better, more secure fit at the area where the canal widens, because the Flexi-Overdenture post has a second tier that widens at the same point. This makes Flexi-Overdenture the most retentive overdenture around.

The Flexi-Overdenture® EZ-Change® attachment is a new patented keeper and cap system that allows for "quick and easy" nylon cap insert replacement, while utilizing the current overdenture post system. A metal keeper is permanently cold cured into the denture to hold a threaded nylon cap insert. When worn, this cap may easily be removed, requiring only seconds for replacement, thereby considerably shortening chair time.<sup>10-11</sup>

There are no limitations to the Flexi-Overdenture System. In fact, we recommend it for use as an invisible attachment with a partial denture. The Flexi-Post Overdenture Attachment is simply an essential part of every restorative dental practice.

## TECHNICAL FACTS:

Flexi-Overdenture Post Dimensions (For Both Stainless Steel and Titanium Alloy Posts):

Post Number	1	2	3
Color Code	Red	Blue	Green
Diameter of Ball	2.5mm	2.5mm	2.5mm
Length of Head	2.70mm	2.70mm	2.70mm
Length of Shaft	9.5mm	10.5mm	13.0mm
Diameter			
Without Threads	1.00mm	1.25mm	1.50mm
With Threads	1.40mm	1.65mm	1.90mm
Diameter of Primary Reamer	1.20mm	1.45mm	1.70mm
Length of Primary Reamer	11.0mm	12.0mm	14.5mm

## ORDERING INFORMATION:

### Flexi-Overdenture Stainless Steel Introductory Kits:

(12 Overdenture posts - 6 ea. of sizes 1 & 2, 12 nylon attachment caps, 12 rubber bands, 2 primary reamers, 2 countersink drills, 1 wrench, 1 depth gauge and 5 EDS gates glidden drills)\*

**Cat. No. 210-00**

(4 Overdenture posts - 2 ea. of sizes 1 & 2, 4 nylon attachment caps, 4 rubber bands, 2 primary reamers, 2 countersink drills, 1 wrench, 1 depth gauge and 5 EDS gates glidden drills)\*

**Cat. No. 211-00**

### Flexi-Overdenture Titanium Intro. Kits:

(4 Overdenture posts - 2 ea. of sizes 1 & 2, 4 nylon attachment caps, 4 rubber bands, 2 primary reamers, 2 secondary drills, 1 wrench, 1 depth gauge, 4 brass transfer studs and 5 EDS gates glidden drills)\*

**Cat. No. 212-00**

(12 Overdenture posts - 6 ea. of sizes 1 & 2, 12 nylon attachment caps, 12 rubber bands, 2 primary reamers, 2 secondary drills, 1 wrench, 1 depth gauge, 12 brass transfer studs and 5 EDS gates glidden drills)\*

**Cat. No. 215-00**

### (For Indirect/coping & Direct/non-coping Technique)

(4 Overdenture posts - 2 ea. of sizes 1 & 2, 4 nylon attachment caps, 4 rubber bands,

2 primary reamers, 2 secondary drills - for indirect/coping, 2 countersink drills - for direct/non-coping, 1 wrench, 1 depth gauge, 4 brass transfer studs and 5 EDS gates glidden drills)\*

**Cat. No. 212-01**

(12 Overdenture posts - 6 ea. of sizes 1 & 2, 12 nylon attachment caps, 12 rubber bands, 2 primary reamers, 2 secondary drills - for indirect/coping, 2 countersink drills - for direct/non-coping, 1 wrench, 1 depth gauge, 12 brass transfer studs and 5 EDS gates glidden drills)\*

**Cat. No. 215-01**

### Flexi-Overdenture Stainless Steel Refills:

(6 OVD posts, 6 attach. caps, 6 rubber bands, 1 primary reamer and 1 countersink drill)\*

Size 1 **Cat. No. 230-01**

Size 2 **Cat. No. 230-02**

Size 3 **Cat. No. 230-03**

### Flexi-Overdenture Titanium Refills:

(6 OVD posts, 6 attach. caps, 6 rubber bands, 1 primary reamer, 1 secondary drill and 6 brass trans. studs)\*

Size 1 **Cat. No. 235-01**

Size 2 **Cat. No. 235-02**

Size 3 **Cat. No. 235-03**

### (For Indirect/coping & Direct/non-coping Technique)

(6 OVD posts, 6 attach. caps, 6 rubber bands,

1 primary reamer and 1 countersink drill-direct/non-coping)\*

Size 1 **Cat. No. 236-01**

Size 2 **Cat. No. 236-02**

Size 3 **Cat. No. 236-03**

### Flexi-Overdenture Accessories:

(6 nylon female attachment caps)

**Cat. No. 290-01**

(OVD wrench) . . . . . **Cat. No. 290-02**

(stainless steel depth gauge) . . . . . **Cat. No. 290-06**

(titanium depth gauge) . . . . . **Cat. No. 290-07**

(OVD countersink drill for second tier & flange preparation of titanium posts)

Size 1 **Cat. No. 292-01**

Size 2 **Cat. No. 292-02**

Size 3 **Cat. No. 292-03**

(6 transfer studs for titanium Overdenture posts)

Size 1 **Cat. No. 293-01**

Size 2 **Cat. No. 293-02**

Size 3 **Cat. No. 293-03**

### Flexi-Overdenture EZ-Change Accessories:

(2 keepers, 2 cap inserts, 2 rubber bands & EZ-Change® wrench)\*

**Cat. No. 250-00**

(2 keepers, 2 cap inserts & 2 rubber bands)\*

**Cat. No. 250-01**

(6 nylon replacement cap inserts)

**Cat. No. 250-02**

(EZ-Change wrench) . . . . . **Cat. No. 250-03**

For our complete line of patented dental products please visit our website at: [www.edsdental.com](http://www.edsdental.com)

## Flexi-Flow Auto® E



Patented, lanthanide\* reinforced, self curing, multi-purpose cements.

### FEATURES

Titanium and lanthanide reinforced.

Auto mix, low viscosity.

Self curing formula.

Chemically bonds with composite core buildup material.

Radiopaque.

Insoluble.

Flexi-Flow Auto® E - Shade Vita® A2.

Compatible with all Ti-Core® reinforced core materials.

### BENEFITS

Provides strength comparable to dentin.

Auto mixed and easily placed. Thoroughly coats dental tubules and post. Repeatable mix consistency.

Sets and hardens in 5 minutes, saving valuable chair time. Fully cures even at the bottom of the post-hole.

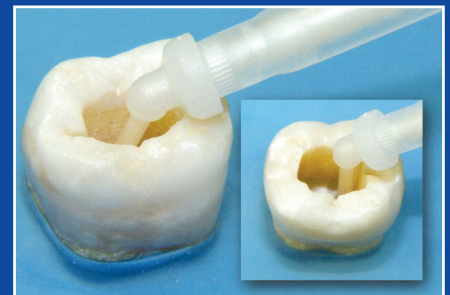
Saves you time. No removal of excess flash.

Clear x-ray viewing.

For lasting strength.

For aesthetic restorations.

Provides a homogeneous mass for solid core build-up.



### Flexi-Flow Auto E - The Essential Link!

Eliminate what has always been the weakest link in any restorative system: the post-to-dentin interface. Since it surpasses the compressive strength of dentin, Flexi-Flow can be relied upon to maintain the strength found in natural tooth structure.

Now this rock solid reinforced flowable composite cement comes in a efficient delivery system that allows cement placement intra orally down the root canal!

**Flexi-Flow and Flexi-Flow Natural:  
Available in original gel/gel consistency!**



\* Data on file

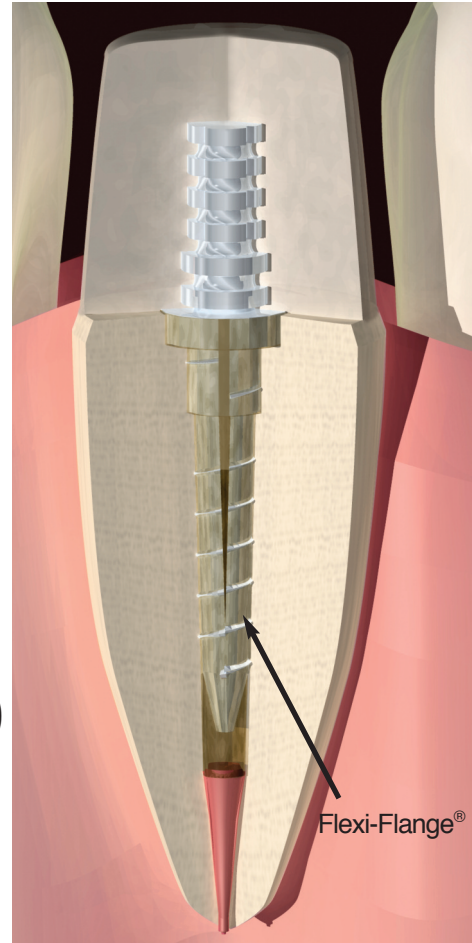
Flexi-Flow

## THE ESSENTIAL CEMENT.

Flexi-Flow's strength comes from varied particle and density size efficiently displacing oxygen from the matrices.

Flexi-Flow's high-density large particles and low-density small particles work together to form a highly compressive and efficient composite.

Flexi-Flow's matrix, reinforced by the cohesive strength of titanium, lanthanide, and silica keeps the post-to-dentin interface from breaking down.



## TECHNICAL FACTS:

Post Retention (w/ #1 Flexi-Post)	(985.2N (±117.9 lbs.) 221.5 lbs (±26.5 lbs.))
Diametral Tensile Strength	31.12 MPa (±4.27 MPa)
Compressive Strength	191 MPa (±22 MPa)
Radiopacity	Positive

## ORDERING INFORMATION:

### Flexi-Flow Auto E - Self Curing Reinforced Cement

Flexi-Flow Auto E . . . . . Catalog Number 880-00

#### Includes:

2 auto mix syringes (each containing 4.5 gm base, 4.5 gm catalyst), 20 mixing tips, 20 intra oral tips.

### Flexi-Flow & Flexi-Flow Natural

Flexi-Flow . . . . . Catalog Number 850-00  
Flexi-Flow Natural . . . . . Catalog Number 860-00

#### Flexi-Flow Sets Include:

One 9g syringe of Flexi-Flow Base, One 9g syringe of Flexi-Flow Catalyst, 50 Disposable Spatulas, 50 Sheet Mixing Pad, and an Instruction Booklet

### Flexi-Flow Auto Root Canal Intra-Oral Tips (ø 1.0mm OD)

20 Tips with Mixers (Fits all standard auto-mix double barrel syringes) . . . . Catalog Number 870-20

**For our complete line of patented dental products please visit our website at: [www.edsdental.com](http://www.edsdental.com)**



## Ti-Core® Flow<sup>+</sup>

Patented, lanthanide reinforced, dual cured, resin composite core build-up material and cement all in one!



### FEATURES

Lanthanide reinforced for rock solid strength

Auto Mix for ideal viscosity

Repeatable mixing consistency.

Radiopaque

Dual cure formulation

Reduces chair time

Vita® A2

### BENEFITS

Due to its similar strength to dentin, ditching and grooving of the core material is avoided. High strength for long term durability.

Non-slumping stackable consistency allows the build-up of a core either via free-hand or with EDS Core Forms.

Auto-mix mechanism produces consistent fusion of base and catalyst. Eliminates pad mixing and transfer. Intra oral tip allows for precise application.

Creates an easy preparation for core formation and the perfect properties when used as a post cement

Easily identified on x-ray.

Speeds procedure while insuring depth-of-cure.

Ability to contour and prep immediately. Adaptable to any technique.

For aesthetic restorations under ceramic crowns



### From Ti-Core, the brand you trust . . .

The multi-purpose material that's a rock solid core material **AND can be used as a post cement (monoblock).**

Outstanding strength to cut remarkably like natural dentin.

Exceptionally high compressive strength for enhanced stability.

Ideal consistency for better handling characteristics.

Perfect properties - when used as a core material or post cement.

Smoother material with enhanced flow.

\*U.S. Patent Nos. 5,034,433 and 5,204,398. European Patent No. EP 0 631 598 B1. Other patents pending.

**Ti-Core Flow<sup>+</sup>**



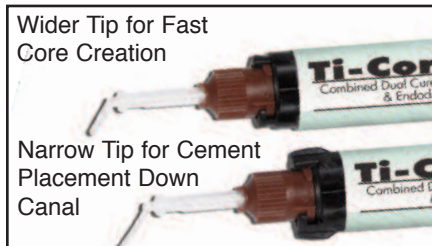
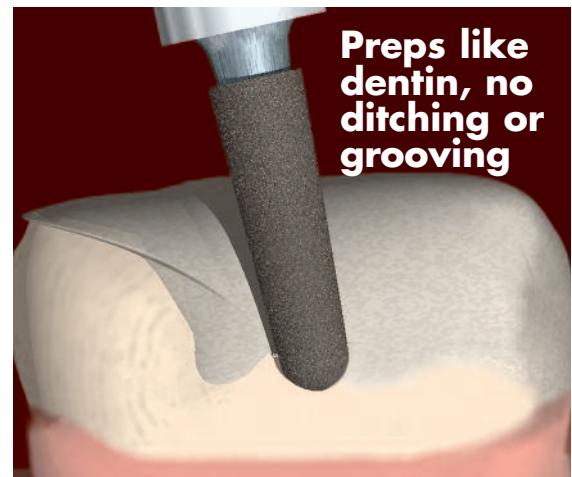
# Ti-Core Flow+

## THE ESSENTIAL CORE MATERIAL AND CEMENT

Ti-Core Flow+ is the only lanthanide incorporated, auto mixing, composite core material/cement. Lanthanide reinforcing agents are biocompatible fillers that add strength, solidity and durability. They provide a unique material with properties no other composite or glass ionomer can match.

## ELIMINATE DITCHING AND GROOVING

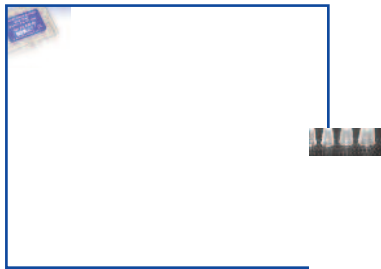
During preparation of the core, it is easy to ditch into conventional composite and glass ionomer materials due to their weaker structure. Ti-Core Flow+ offers resistance similar to dentin. This prevents the typical ditching and grooving associated with conventional non-reinforced core materials. As a result, Ti-Core build-up materials improve and simplify the preparation of the core.



## SUPER STRONG CEMENT

Reinforced by the cohesive strength of lanthanide, Ti-Core Flow+ keeps the post-to-dentin interface from breaking down. Now you can eliminate what has always been the weakest link in any restorative system: the post-to-dentin interface. With compressive strength comparable to dentin, Ti-Core Flow+ can be relied upon to maintain the strength found in natural tooth structure.

## ESSENTIAL DENTAL SYSTEMS CORE FORMS



- Tab top for easy pick-up and placement
- Reference line for accurate contouring
- Tapered slides accurate sizing and easy removal
- Clear for light curing at all angles
- Polyethylene: Will not stick to core material, easy to trim.
- 4 sizes for all clinical situations

## TECHNICAL FACTS:

Post Head Retention (w/ #2 Flexi-Post)  
Diametral Tensile Strength  
Fractural Strength (w/ #1 Flexi-Post)  
Radiopacity

880 N ( $\pm 190$  N) (198 lbs ( $\pm 35$  lbs.))  
35 MPa ( $\pm 4$  MPa)  
1220 N ( $\pm 170$  N) (274 lbs ( $\pm 39$  lbs.))  
Positive

## ORDERING INFORMATION:

### Ti-Core Flow+

Ti-Core Flow+ ..... Catalog Number 832-00  
2 auto mix syringes (each containing 4.5 gm base, 4.5 gm catalyst), 20 mixing tips, 20 intra oral tips.

### Auto Mix Intra-Oral Tips ( $\varnothing$ 1.80mm OD)

20 Tips with Mixers (Fits all standard auto-mix double barrel syringes) . . . . Catalog Number 830-20

### Auto Mix Intra-Oral Tips ( $\varnothing$ 1.00mm OD)

20 Tips with Mixers (Fits all standard auto-mix double barrel syringes) . . . . Catalog Number 870-20

### Essential Dental Systems Core Forms

Clear Core Forms (Box of 48, 12 ea. of 4 sizes) ..... Catalog Number 890-00

For our complete line of patented dental products please visit our website at: [www.edsdental.com](http://www.edsdental.com)



# Essential Organizers

Unique storage systems that let you keep your Essential Dental System posts and accessories organized and sterilized.

## FEATURES / BENEFITS

1. Perfect organizer for office or individual operatories. Keeps posts neat and accessible.
2. Cost effective introductory kit in full or mini size.
3. Convenient infection control: autoclavable, chemclavable or dry heat sterilization.
4. Durable aluminum construction for long-term use.
5. Linear organization of posts for easy identification of correct size and related accessories.



## TECHNICAL FACTS:

Dimensions:

Large Sterilization Box -  
4 1/2" (length), 1 3/4" (width),  
1 1/2" (depth)

Mini-Steri Box - 2" (length),  
1 5/8" (width), 1 1/2" (depth)

## ORDERING INFORMATION:

	Catalog Number	
Sterilization Box (Empty) For storage of 50 posts - 10 posts ea. of 5 sizes (00-03) and accessories	197-00	
Mini-Sterilization Box (Empty) For storage of 10 posts - 2 posts ea. of sizes (00-03) and accessories	197-04	
Flexi-Post Sterilization Box (Complete) Contains 50 posts - 10 posts ea. of sizes (00-03) & accessories	<u>Stainless Steel</u> 197-01	<u>Titanium</u> 197-02
Flexi-Post Mini-Sterilization Box (Complete) Contains 10 posts - 2 posts ea. of 5 sizes (00-03) & accessories	197-05	197-06
Combi-Sterilization Box Contains 16 posts - 12 Flexi-Posts (4 posts ea. of 3 Sizes/0,1,2) and 4 Overdenture posts (2 posts ea. of 2 sizes/1,2) and accessories	197-07	197-03
Flexi-Flange Mini-Sterilization Box (Complete) Contains 8 posts - 2 posts ea. of 4 sizes (0-03) & accessories	197-08	197-09
Special order Combi-Boxes Call 1-800-22-FLEXI to special order.		

## Ti-Core® Auto E

Ideal for aesthetic restorations!



Patented,\* lanthanide reinforced, dual cured, resin composite core build-up material.

### FEATURES

Lanthanide reinforced

Ideal composite viscosity for core build-up

Ease of preparation

Radiopaque

Dual cure formulation

Reduces chair time

Ti-Core Auto E - Vita® A2

### BENEFITS

Lanthanide increases strength without the potential corrosive by-products that result from silver oxidation of silver filled ionomers. High strength for long term durability.

Enables use of old crown as a core form with minimal composite remaining on the margin. Optimizes adaptation of core material to the post.

Easy to place. Due to its similar strength to dentin, ditching and grooving of the core material is avoided.

Easily identified on x-ray.

Speeds procedure while insuring depth-of-cure. Adaptable to any technique.

Auto-mix mechanism produces consistent fusion of base and catalyst. Eliminates pad mixing and transfer. Intra oral tip allows for precise application.

For aesthetic restorations.



### Cuts Like Dentin, No Ditching or Grooving

During preparation of the core, it is easy to ditch into conventional composite and glass ionomer materials due to their weaker structure. Because Ti-Core is as strong as dentin it offers resistance similar to dentin.

From the brand you trust - Ti-Core Auto E provides the strength of Ti-Core with the ease of preparation!



**EDS  
Clear  
Core  
Forms**

\* Data on file.  
\* U.S. Patent Nos. 5,034,433 and 5,204,398. European Patent No. EP 0 631 598 B1. Other patents pending.

# Ti-Core Auto

## THE ESSENTIAL CORE MATERIAL.

Ti-Core Auto E is the only lanthanide incorporated, auto mixing, composite core materials. Lanthanide reinforcing agents are bio-compatible fillers that add strength, solidity and durability. They provide a totally unique core material with properties no other composite or glass ionomer can match.

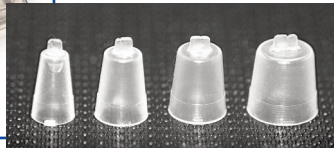
Ti-Core Auto E was developed by placing lanthanide within a Bis-GMA matrix. The results are a core material that provides a long lasting final core restoration.

## TI-CORE AUTO MIX MATERIALS ELIMINATE DITCHING AND GROOVING.

During preparation of the core, it is easy to ditch into conventional composite and glass ionomer materials due to their weaker structure. Ti-Core Auto offers resistance similar to dentin. This prevents the typical ditching and grooving associated with conventional non-reinforced core materials. As a result, Ti-Core build-up material improve and simplify the preparation of the core.



## ESSENTIAL DENTAL SYSTEMS CORE FORMS



- Tab top for easy pick-up and placement
- Reference line for accurate contouring
- Tapered slides accurate sizing and easy removal
- Clear for light curing at all angles
- Polyethylene: Will not stick to core material, easy to trim.
- 4 sizes for all clinical situations

## TECHNICAL FACTS:

Post Head Retention (w/ #2 Flexi-Post)  
Diametral Tensile Strength  
Fractural Strength (w/ #1 Flexi-Post)  
Radiopacity

## Ti-Core Auto

880 N ( $\pm 190$  N) (198 lbs ( $\pm 35$  lbs.))  
35 MPa ( $\pm 4$  MPa)  
1220 N ( $\pm 170$  N) (274 lbs ( $\pm 39$  lbs.))  
Positive

## ORDERING INFORMATION:

### Ti-Core Auto Syringes - Dual Cured Reinforced Core Materials

Ti-Core Auto E . . . . . Catalog Number 830-00  
2 auto mix syringes (each containing 4.5 gm base, 4.5 gm catalyst), 20 mixing tips, 20 intra oral tips.

### Ti-Core Flow +

Ti-Core Flow + . . . . . Catalog Number 832-00  
2 auto mix syringes (each containing 4.5 gm base, 4.5 gm catalyst), 20 mixing tips, 20 intra oral tips.

### Auto Mix Intra-Oral Tips (ø 1.80mm OD)

20 Tips with Mixers (Fits all standard auto-mix double barrel syringes) . . . . Catalog Number 830-20

### Auto Mix Intra-Oral Tips (ø 1.00mm OD)

20 Tips with Mixers (Fits all standard auto-mix double barrel syringes) . . . . Catalog Number 870-20

### Essential Dental Systems Core Forms

Clear Core Forms (Box of 48, 12 ea. of 4 sizes) . . . . . Catalog Number 890-00

**For our complete line of patented dental products please visit our website at: [www.edsdental.com](http://www.edsdental.com)**