

# SUNSTAR



BUTLER



## Professional Product Catalog



Giving you and your patients the right tools  
for optimal oral care

SUNSTAR  
**GOLD**  
ADVANTAGE

*Gold Plan offers up to 20% Off on select products, Plus:*  
• **FREE Shipping** • **FREE Imprinting** • **Automatic Shipments**

[www.GUMbrand.com](http://www.GUMbrand.com)

## Index

### GUM® Toothbrushes

Not All Toothbrushes are Alike	3-4
Adult Toothbrushes	5-6
Specialty Toothbrushes	11

### Children's Oral Care Products

Toothpaste	7 & 10
Flossers	7
Toothbrushes	7-10

### Bone Regenerative Products

12

### Perio Products

Paroex® Chlorhexidine Gluconate	13
PerioShield® Rinse	14

### Interproximal Cleaning

Interdental Variety Box	15
Soft-Picks®	16
Stimulator	16
Proxabrush® Go-Betweens® Cleaners	17
Proxabrush® Handles	18
Proxabrush® Refills	18
Proxabrush® Snap-Ons	18
Dental Floss	19
Floss Accessories	20
Flossers	21

### Pain Relief

Rincinol® Oral Pain Relief Rinse	22
Canker-X® Oral Pain Relief Gel	22

### Butler® Products

Prophy Products	23
White Fluoride Varnish	24
GUM® Red-Cote® Disclosants	24

### Oral Care Kits

Orthodontic Kits	25
Implant Care Kit	25

### Accessories

2-in-1 Tongue Cleaner	26
Orthodontic Wax	26
Mouth Mirror	26
Butler® Clear Dip® Solution	26

## What's New

**BRUSHING IS BETTER WITH MONSTERZ!**

Fun characters engage children to help increase compliance

Kids: ages 2+

Junior: ages 5+

**G·U·M® MONSTERZ**  
Toothbrushes

See Page 9 for Details

### Soft-Picks® Advanced



#### Easy, effective, complete! Gentle interdental cleaning!

- Soft, comfortable bristles gently remove plaque, dislodge food and massage gums.
- Improved grip for comfort and effective control.
- Easily reaches any area of the mouth, including difficult to access posterior surfaces.
- Easy to use with orthodontics, implants and bridges.



See Page 16 for Details

**PURCHASE: 144 Toothbrushes**

**Premium Toothbrushes: \$0.93/patient**



All Technique® Toothbrushes have the patented Quad-Grip® Thumb Pad which helps guide the hand to hold the brush at 45° so the bristles are properly positioned at the sulcus for optimal subgingival cleaning.<sup>1</sup>

☐ Technique® Deep Clean



Extremely Tapered Bristles clean 2.8 mm beneath the sulcus and reach 1.4 mm between the teeth<sup>2</sup>

☐ Technique® Complete Care



Dome Trim® and raised bristles at the tip provide greater access to posterior regions and clean hard-to-reach surfaces

☐ Technique® Sensitive Care



Dome Trim® and Ultra-soft bristles are gentle on gums

☐ Summit®+



Extremely Tapered Bristles for deeper cleaning between teeth and below the gumline

**Select Toothbrushes: \$0.83/patient**

☐ Micro Tip®



Dome Trim® and Micro-feathered bristle tips contact the tooth surface to provide soft, gentle cleaning with minimized pressure

☐ Super Tip®



Raised bristles at the tip provide greater access to posterior regions and clean hard-to-reach surfaces. Plus Tongue cleaner

☐ Technique® Classic



Quad-Grip® and Dome Trim® bristle design

☐ Dome Trim®



Dome Trim® bristle design to provide greater contact with tooth surface

**Kids' Toothbrushes: \$0.83/patient**

☐ Crayola™ Pip-Squeaks™



Ultra soft bristles on a narrow, tapered head - perfect for small mouths

☐ Crayola™ Neon Marker



Unique angled bristle design cleans between teeth and removes plaque, raised tip bristles clean hard-to-reach posterior teeth

☐ Monsterz Kids



Ultra soft Dome Trim® bristles, ergonomic handle (Ages 2+)

☐ Monsterz Junior



Soft Dome Trim® bristles, ergonomic handle (Ages 5+)

☐ Super Tip® Sub Compact



Raised Super-Tip® bristle design and head size is perfect for tweens

☐ Technique® Kids'



Quad-Grip® and Dome Trim® bristle design

\*Suction cup base holds the toothbrush upright which helps keep bristles clean and reduces clutter on the counter

**FREE PRODUCT: Choose one of these products**

**COMBO PACK**



Up To \$81 Value

- ☐ 72 Soft-Picks® Original - 5 pack & 72 Advanced Care Flossers - 3 pack

**FLOSS Up To \$63 Value**



144 - 4 yd

- ☐ ButlerWeave® Mint Waxed
- ☐ ButlerWeave® Tutti-Frutti
- ☐ Eez-Thru® Mint
- ☐ Eez-Thru®
- ☐ Expanding®

**FLOSSERS Up To \$50 Value**



144

- ☐ Advanced Care Flossers w/Vitamin E & Fluoride - 3 pack
- ☐ Professional Clean Flossers - 3 pack
- ☐ Angled Flossers - 2 pack
- ☐ Crayola™ Kids' Flossers - 3 pack

**TOOTHBRUSHES Up To \$42 Value**



- ☐ 3 Dozen Toothbrushes (of matching sku)

**INTERDENTAL BRUSHES Up To \$120 Value**

(choose 4 boxes mix and match)



Proxabrush® Go-Betweens®

- ☐ 36 - Ultra Tight
- ☐ 36 - Tight
- ☐ 36 - Moderate
- ☐ 36 - Wide
- ☐ 36 - Variety Pack (9 each)

**BONUS PRODUCT: Choose one of these products**



144 Up To \$24 Value

- ☐ Toothbrush Covers vented with antibacterial coating<sup>3</sup>



144 Up To \$50 Value

- ☐ Professional Clean Flossers - 3 pack



24 Up To \$34 Value

- ☐ Travel Toothbrushes foldable

**FREE: Patient Bags**



144 - Patient Bags

Up To \$5 Value



Look For This Symbol  
On The Catalog Pages  
For FREE\* Item Selections

\*select products qualify for the 20% discount.

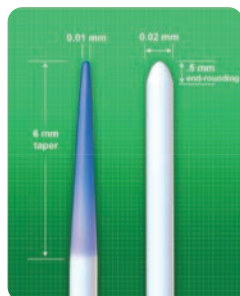
1. In-Vitro Test, YRC Inc., September 2008 3. Bentley CD, J.A. Disney: A comparison of partial and full mouthscoring of plaque and gingivitis in oral hygiene studies. J Clin Periodontol 1995; 22: 131-135  
2. Data on File (DOF-0001) 3. Bristles contain an antibacterial agent to inhibit bacterial growth for continual bristle protection. The agent does not protect against disease. Patients should always rinse their brushes before and after each use.





**GUM® brushes clean better beneath and between.\***

## Not all toothbrushes are alike in cleaning performance



### Extremely Tapered Bristles (ETB)

Precision tapering enables the Extremely Tapered Bristles (ETB) to penetrate more deeply (2.8 mm) into the sulcus, along the gingival margin and interproximally. The upper 6 mm of the bristle is tapered to a rounded 0.02 mm end. Ordinary bristles have less than 0.5 mm tapered to 0.18 mm.

Available on:



Technique®  
Deep Clean



Summit®+

### Bristle Detail

30x magnification



Extremely Tapered  
Bristles (ETB)



360° Bristles



Indicator Bristles

### Beneath the Sulcus\*

photo=front view  
illustration= side view



2.8 mm into the sulcus



1.1 mm into the sulcus



0.6 mm into the sulcus

### Between the teeth\*



1.4 mm interproximal



1.1 mm interproximal



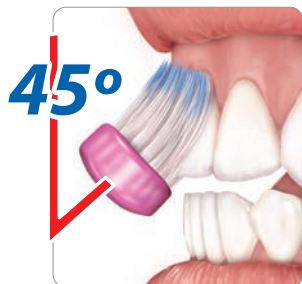
0.9 mm interproximal

\*In-Vitro Test, YRC Inc., September 2008

Colgate is a registered trademark of Colgate-Palmolive Company. Oral-B is a registered trademark of Procter & Gamble.



## Quad-Grip® promotes the modified Bass technique.



### Patented Quad-Grip® Thumb Pad

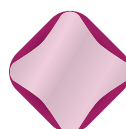
Designed to guide the hand to hold the brush at 45° in all quadrants so the bristles are properly positioned at the sulcus for optimal subgingival cleaning.



front

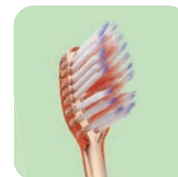


back



cross section

### Available on:



Technique®  
Deep Clean



Technique®  
Complete Care



Technique®  
Sensitive Care



Technique® Classic



Technique® Kids'

## Dome Trim® Bristle Design



Raised center bristles form a dome shape which has been shown in clinical studies to reduce gingival inflammation and bleeding.<sup>1</sup> It cleans better where periodontal disease starts.

The dome shape bristling structure helps promote the recommended 45° angle when using the modified Bass technique.



GUM® Dome Trim®



Oral-B® Indicator

1. Bentley CD, J.A. Disney: A comparison of partial and full mouthscoring of plaque and gingivitis in oral hygiene studies. *J Clin Periodontol* 1995; 22: 131-135.

### Available on:



Technique®  
Complete Care



Technique®  
Sensitive Care



Super Tip®



Micro Tip®



Technique® Classic



Dome Trim®

### Textured Bristle Tips

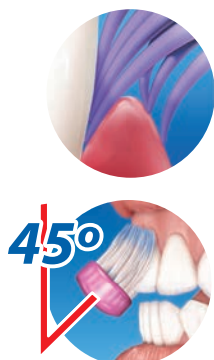
Bristles are specially processed to create a surface texture that picks up the plaque for enhanced plaque removal.

### Available on: All GUM® toothbrushes

(excluding Technique® Deep Clean and Summit®+)



## Technique® Deep Clean Toothbrush



4.3

AVAILABLE for IMPRINT

Item #	Texture	Size	Bristle Diameter (in)	Tufts
524	Soft	Full	0.007	46
525	Soft	Compact	0.007	30
527	Sensitive	Compact	0.006	30

## Technique® Complete Care Toothbrush



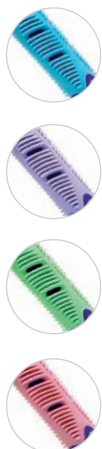
### Improved cleaning in hard-to-reach areas

Raised bristles at the tip provide greater access to posterior regions and clean hard-to-reach surfaces.

AVAILABLE for IMPRINT

Item #	Texture	Size	Bristle Diameter (in)	Tufts
590	Soft	Full	0.007	46
591	Soft	Compact	0.007	30

## Technique® Sensitive Care Toothbrush



AVAILABLE for IMPRINT

Item #	Texture	Size	Bristle Diameter (in)	Tufts
516	Sensitive	Full	0.006	46
517	Sensitive	Compact	0.006	30

## Technique® Classic Toothbrush



AVAILABLE for IMPRINT

Item #	Texture	Size	Bristle Diameter (in)			Tufts
			Tip	Inner	Outer	
490	Soft	Full	0.008	0.008	0.007	36
491	Soft	Compact	0.008	0.008	0.007	30
495	Sensitive	Compact	0.007	0.007	0.006	30

## Adult Toothbrushes

### Micro Tip® Toothbrush



Detail of micro-feathered bristle tip

#### Increase contact with the tooth surface by 70%

Thousands of bristle tips contact the tooth surface to provide soft, gentle cleaning with minimized pressure.



AVAILABLE for IMPRINT

Item #	Texture	Size	Bristle Diameter (in)		Tufts
			Inner	Outer	
470	Soft	Full	0.009	0.007	39
471	Soft	Compact	0.009	0.007	31
474	Sensitive	Full	0.008	0.006	39
475	Sensitive	Compact	0.008	0.006	31

### Super Tip® Toothbrush



#### Improved cleaning in hard-to-reach areas

Raised bristles at the tip provide greater access to posterior regions and clean hard-to-reach surfaces.



#### Tongue Cleaner

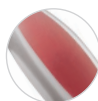
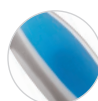
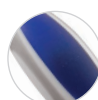
Helps remove odor-causing bacteria.



AVAILABLE for IMPRINT

Item #	Texture	Size	Bristle Diameter (in)			Tufts
			Tip	Inner	Outer	
460	Soft	Full	0.008	0.008	0.007	35
461	Soft	Compact	0.008	0.008	0.007	27
464	Sensitive	Full	0.007	0.007	0.006	35
465	Sensitive	Compact	0.007	0.007	0.006	27
468	Soft	Subcompact	0.008	0.008	0.007	24

### Summit®+ Toothbrush



AVAILABLE for IMPRINT

Item #	Texture	Size	Bristle Diameter (in)	Tufts
505	Soft	Compact	0.007	31
509	Sensitive	Compact	0.006	31

### Dome Trim® Toothbrush



AVAILABLE for IMPRINT

Item #	Texture	Size	Bristle Diameter (in)		Tufts
			Inner	Outer	
456	Soft	Full*	0.008	0.007	38
457	Soft	Compact	0.008	0.007	30
459	Sensitive	Compact	0.007	0.006	30

\*Full head features multi-colored bristle design



**G·U·M**

for **Kids** +



= Happy,  
healthy smiles!



### Crayola™ Squeeze-A-Color™ Toothpaste

- Contains the fluoride kids need.
- Sweetened with Xylitol.
- Unique precision tip opening helps control the amount of toothpaste used.
- Three cool colors and yummy flavors empower kids to have fun choosing and mixing.

**Item**

4050 Crayola™ Squeeze-A-Color™ Toothpaste



### Crayola™ Neon Marker

- NEW bright colors make brushing fun!
- Raised tip bristles clean hard-to-reach back teeth
- Slim handle design provides an ergonomic hold and easier grip for small hands
- Suction cup base holds the toothbrush upright which helps to keep bristles clean and reduces clutter on the counter



**Item**

227 Crayola™ Marker Neon Brush

**Texture**

Soft

**Tufts**

25

### Crayola™ Kids' Flossers

- Fluoride coated, shred-resistance floss is gentle on young gums
- Ergonomic handle design makes it easy for small hands to hold
- Yummy grape flavor
- Three bright colors and fun designs!



**Item**

895 - Crayola™ Kids Flossers

**Pkg**

48 packs of 3



### Crayola™ Pip-Squeaks™

- Ultra-soft bristles are gentle on young teeth and gums
- Four different Pip-Squeaks™ faces in fun Crayola™ colors
- Narrow, tapered brush head makes maneuvering in small mouths easier
- Suction cup base holds the toothbrush upright which helps keep bristles clean and reduces clutter on the counter



**Item**

232 Crayola™ Pip-Squeaks™

**Texture**

Ultra Soft

**Tufts**

19

## Kids' Toothbrushes



### Crayola™ Timer Light

- Flashing, one-minute timer light, helps kids know when to switch rows and encourages longer brushing time
- Dome Trim® bristle design is clinically proven to clean below the gumline\*
- Suction cup base holds the toothbrush upright which helps keep bristles clean and reduces clutter on the counter

#### NEW COLORS!



Item	Texture	Tufts
202 Crayola™ Timer Light	Soft	29

Non-removable Battery



3.9



Ventilated cap

### Crayola™ Power

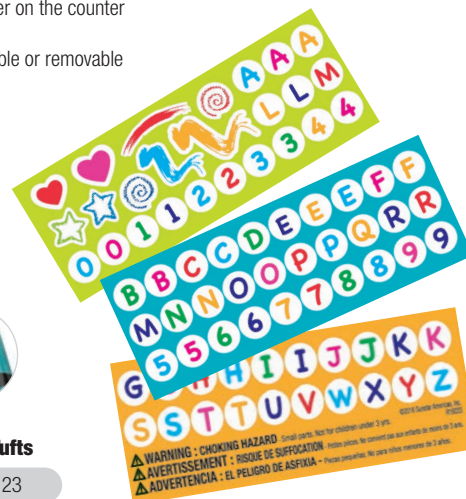


- Oscillating bristle action massages gums while soft bristles gently clean teeth
- Comes with a cap to keep brush head clean and is great for travel too!
- Includes 75 stickers so kids can customize their toothbrush
- Suction cup base holds the toothbrush upright which helps keep bristles clean and reduces clutter on the counter
- Comes in four, fun colors!
- Batteries included, not replaceable or removable

#### NEW COLORS!



Item	Texture	Tufts
2272 Crayola™ Power Brush	Soft	23



**WARNING : CHOKING HAZARD** Small parts. Not for children under 3 yrs.  
**AVERTISSEMENT : RISQUE DE SUFFOCATION** Petites pièces. Ne convient pas aux enfants de moins de 3 ans.  
**ADVERTENCIA : EL PELIGRO DE ASFIXIA** - Pequeñas piezas. No para niños menores de 3 años.

NEW!

# BRUSHING IS BETTER WITH MONSTERZ!

Kids:  
ages 2+



901

- Variety:**  
Two sizes fit wider age range
- Safe:**  
Cushioned brush heads protect gums
- Gentle:**  
Soft bristles gently and effectively remove plaque
- Smart:**  
Center bristles help emphasize a smaller amount of toothpaste for kids
- Ergonomic:**  
Soft handle with thumbpad for stable, comfortable grip
- Easy to store:**  
Suction cup base holds toothbrush upright which helps keep bristles clean
- Fun:**  
Friendly monster characters engage children and improve compliance

Junior:  
ages 5+



902

**G·U·M®**

**MONSTERZ**  
Toothbrushes





## Kids' Toothbrushes

### Power Rangers™ Power Toothbrush

- Oscillating bristle action massages gums while soft bristles gently clean teeth
- Suction cup base holds the toothbrush upright which helps keep bristles clean and reduces clutter on the counter



4080



4090



4072

### Timer Light Toothbrush

- Flashing, one-minute timer light, helps kids know when to switch rows and encourages longer brushing time
- Dome Trim® bristle design is clinically proven to clean below the gumline\*
- Suction cup base holds the toothbrush upright which helps keep bristles clean and reduces clutter on the counter

### Manual Toothbrush

- Dome Trim® bristle design is clinically proven to clean below the gumline\*
- Tongue cleaner on back of brush head gently removes bacteria and promotes fresh breath
- Ergonomic handle design makes it easy for small hands to hold
- Suction cup base holds the toothbrush upright which helps keep bristles clean and reduces clutter on the counter



4070



4060

lalaalopsy.com | mgae.com  
TM & © MGA Ent., Inc. U.S. & other countries  
Used under license by Sunstar Americas, Inc.

© 2015 DreamWorks Animation L.L.C.



### Power Rangers™ Toothpaste

- Yummy "Berry Blast" flavor is mildly fruity and perfect for kids of all ages!
- Fluoride formula helps to strengthen teeth and protect against cavities
- Easy-squeeze tube with flip-top cap helps to keep toothpaste from drying out
- Features a smaller opening so less product is dispensed which reduces waste and counter-top messes!

4085R 4.2 oz

### Technique® Kids'

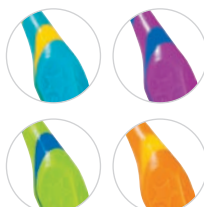
Quad-Grip® handle teaches children the proper brushing method!

- Cushioned grip helps kids place bristles at a 45° degree angle so that optimal, below the gum line cleaning is achieved
- Comes in four different colors



AVAILABLE for IMPRINT

221



### Super Tip® Subcompact

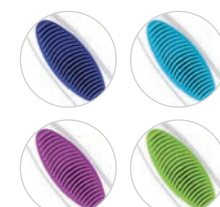
Perfect for Tweens!

- Head size is ideal for younger teens
- Raised Super Tip® bristles at the tip provide access to posterior regions and clean hard-to-reach surfaces



AVAILABLE for IMPRINT

468

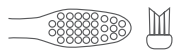




## Specialty Toothbrushes



### Orthodontic Toothbrush



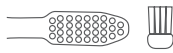
- This "V" trim brush facilitates cleaning around orthodontic appliances such as brackets, arch wires, buttons and ligatures. Also available as a travel brush.

AVAILABLE for IMPRINT

124



### Post-Surgical Toothbrush



- Ultra soft .004 inch bristles are ideal for post surgical cleaning, gum disease, mouth irritations, extractions, implants and grafts. Extremely soft and gentle on gums.

317



### End-Tuft Toothbrush



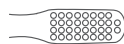
- Small brush head addresses special maintenance concerns, including orthodontic bands, furcations, implants, distal of last molar, and other hard-to-reach areas.

AVAILABLE for IMPRINT

308



### Travel Toothbrush



- Travel brush, with Dome Trim®, features antibacterial\* protected bristles to keep brush cleaner between uses and a snap-lock cap/handle extension.
- Also available in an orthodontic "V" trim.

\*Bristles incorporate a patented antibacterial agent for continuous bristle protection during the recommended life of the brush. Bacterial growth that may affect the bristles is inhibited. The agent in the bristles does not protect against disease. As always, rinse your brush after use.



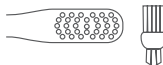
153 - Travel



125 - Ortho Travel



### Denture Brush



- Flat trim, firm nylon design effectively cleans denture surfaces. Tapered brush cleans smaller hard-to-reach areas.
- Lever grip reduces effort for patients with limited dexterity.

201

## GUM® Specialty Toothbrushes

Item	Bristle Diameter (in)	Trim	Tufts
124 Orthodontic	0.008	V-Trim	30
317 Post-Surgical	0.004	Flat	32
308 End-Tuft Soft Tapered	0.008	Tapered	7
153 Travel Brush	0.007	Dome	32
125 Travel Orthodontic (not pictured)	0.008	V-Trim	32
201 Denture Brush	0.014	Flat	33
210 Sulcus Ultra Soft Two-row (not pictured)	0.007	Flat	20
2202 Pulse® Rotapower Unit (not pictured)	0.006	Flat	23
2203 Pulse® Rotapower Refills (not pictured)	0.006	Flat	23

## Bone Grafting Solutions Designed for Easy Placement

### GUIDOR® *easy-graft*® CLASSIC

alloplastic bone grafting system

Once the coated granules of GUIDOR® *easy-graft*® are syringed into the bone defect and come in contact with blood, they change in approximately one minute from a moldable material to a rigid, porous scaffold.

- Designed for ease of use and predictability
- 100% synthetic and fully resorbable
- Ideal for ridge preservation and filling voids around immediate implant placements

This product should not be used in pregnant or nursing women.



Instructions for Use (IFU), including indications, contraindications, precautions and potential adverse effects, are available at <http://us.guidor.com/IFU/>

The trademarks GUIDOR, *easy-graft* and BioLinker are owned by Sunstar Suisse, SA.



4.3



Item	Description	Size	Pkg.
C11-008	500-1000µm - 3 systems x 0.4ml	Large	3/box
C11-078	500-1000µm - 3 systems x 0.25ml	Medium	3/box
C11-018	500-630µm - 3 systems x 0.15ml	Small	3/box

1 system = 1 syringe of GUIDOR *easy-graft* CLASSIC granules and 1 ampule of BioLinker™

### GUIDOR® Bioresorbable Matrix Barrier

A line of translucent bioresorbable barrier membranes with a unique, multi-layer design that facilitates periodontal tissue integration.

- Easy to place due to its durable but malleable structure
- Biocompatible with predictable resorbability<sup>1</sup>
- Available in various shapes and sizes, with and without ligatures, for your guided bone and tissue regeneration cases

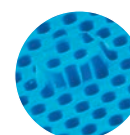
Item	Description	Size	Pkg.
5081	P6 - Rectangle	20.0 x 28.0 mm	1/box
5090	P3 - Rectangle	15.0 x 20.0 mm	1/box
5000	MC - Molar Curved	19.8 x 15.0 mm	1/box
5020	DC - Double Curved	16.1 x 22.6mm	1/box
5060	MSL - Molar Straight Large	15.0 x 14.2 mm	1/box
5050	PPS-R - Perio Plastic Regular	10.0 x 12.7 mm	1/box



external layer



inner space



internal layer

<sup>1</sup>. Gottlow et al. Periodontal Tissue Response to a New Bioresorbable Guided Tissue Regeneration Device: A Longitudinal Study in Monkeys. *International Journal of Periodontics & Restorative Dentistry* 1994;14:437-449

For more information, go to <http://us.guidor.com>





## Paroex® Chlorhexidine Gluconate Oral Rinse USP, 0.12%



**Did you know** that your Chlorhexidine rinse may have **11.6% alcohol**, as an inactive ingredient?

That's the same concentration as a merlot.



**The Original  
Alcohol Free  
Chlorhexidine Rinse**

**Efficacy** without the alcohol.



4.2

**Available in  
4 and 16 fl oz bottles**

*Dosage cup is only supplied with 16 fl oz bottle*

**Rx Only**

Item	Pkg
1788 Paroex® Chlorhexidine Gluconate Oral Rinse	4 fl oz bottle - 24/case
1789 Paroex® Chlorhexidine Gluconate Oral Rinse	16 fl oz bottle - 6/case

## PerioShield® Oral Health Rinse

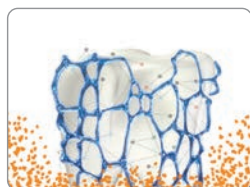


### Plaque-blocking Technology

Interferes with biofilm formation, making it easier to remove.<sup>1-3</sup>

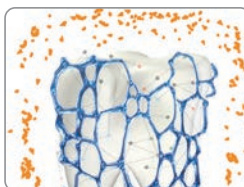
#### Indications for use

- GUM® PerioShield® Oral Health Rinse helps to remove and prevent biofilm build-up on teeth and gingiva that can lead to gingivitis.
- Inhibits biofilm formation in patients with gingivitis and serves as an adjunct to normal mechanical oral hygiene practices where this has proved inadequate.



#### Coats and Disrupts

GUM® PerioShield® Oral Health Rinse coats the teeth and gingiva to create an invisible protective shield. The formation of biofilm is disrupted, making it easier to remove.



#### Protects and Repels

GUM® PerioShield® Oral Health Rinse provides a positive charge which repels plaque from the tooth surface thereby reducing bacterial adhesion.

1. Rundegren et al. Effect of delmopinol on the viscosity of extracellular glucans produced by *Streptococcus mutans*. *Caries Res* 1992;26:281-285. 2. Steinberg et al. The effect of delmopinol on glucosyltransferase adsorbed on to saliva-coated hydroxyapatite. *Archs Oral Biol* 1992 (37);1:33-38. 3. Klinge et al. Effect of local application of delmopinol hydrochloride on developing and early established supragingival plaque in humans. *J Clin Periodontol* 1996;23:543-547.

#### Item

1775 PerioShield® Oral Health Rinse

#### Pkg

300 mL



## Interdental Variety Box

- Contains a variety of GUM® Proxabrush® Go-Betweens® Cleaners, Soft-Picks®, ButlerWeave® Floss and Eez-Thru® Flossers
- Includes a total of 84 pieces

Item	Pkg
KIT40P Interdental Variety Pack	84 Pieces

### Facts

- Only 1 out of 4 people floss regularly\*
- Patients who use an interproximal cleaner regularly remove more debris and reduce plaque build-up
- Over 60% of patients who receive a sample from their dental professional actually use and repurchase that product\*

\*Data on File

### Proxabrush® Go-Betweens® Cleaners Tight & Wide

### Professional Care Flossers

### Effective, easy to use options

- Keep items organized in a cabinet or drawer
- Variety of solutions to address a range of patient needs

### ButlerWeave® Mint Waxed Floss

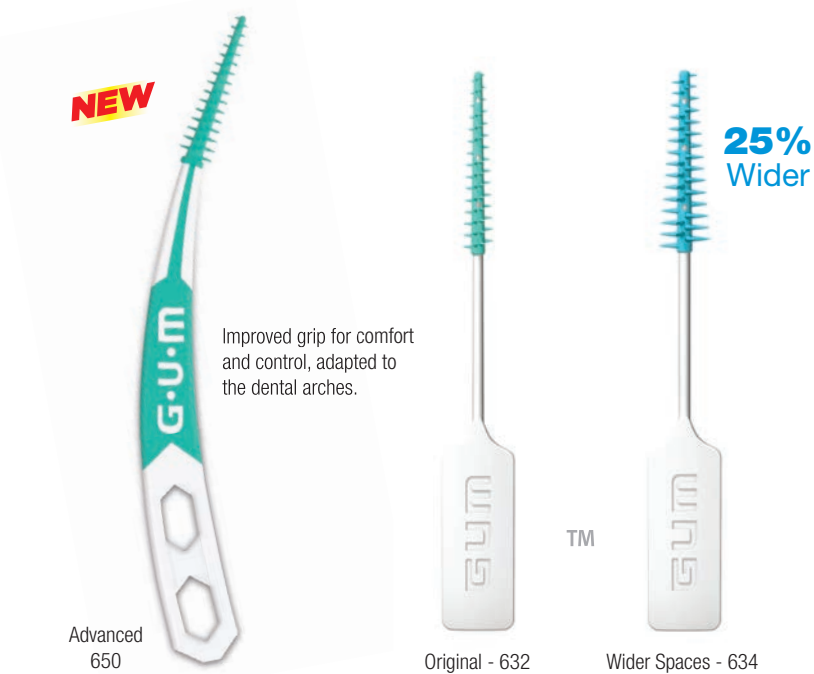
### Soft-Picks® Original & Wider Spaces





## Interproximal Cleaning

**Soft-Picks®** - convenient, comfortable, interdental cleaning



*Clinical testing showed Soft-Picks® Original removed 26% of interproximal plaque and reduced interdental bleeding. Soft-Picks® Original were also shown to reduce gingivitis by 33% over 6 weeks.<sup>2</sup>*

The **#1 disposable dental pick** of professionals<sup>1</sup>

### Easy to use:

Soft-Picks® soft flexible bristles have a tapered design to fit better in interproximal spaces to remove plaque.



Healthy Gums  
(Non-compliant flossers)



Implants, Bridges  
or Crowns



Orthodontics

Item	Pkg
632 Soft-Picks® Original	72 packs of 5
634 Soft-Picks® Wider Spaces	72 packs of 5
650 Soft-Picks® Advanced	110 packs of 2



## Stimulator Handle & Refills

*The #1 selling stimulator<sup>1</sup>*



Item	Pkg
600 Handle	dozen
600A Refills	3 dz/box

- Rubber tip stimulator for gingival massage and interproximal cleaning.
- Slender angled neck for easy maneuverability around arches.

1. Source: SDM data December, 2016.

2. Yost KG, Mallatt ME, Liebman J: Interproximal gingivitis and plaque reduction by four interdental products. *J Clin Dent* 2006; 17: 79-83.



The **#1 interdental brush**  
of professionals<sup>3</sup>

## Proxabrush® Go-Betweens® Cleaners

### Ultra Tight



### Tight



### Moderate



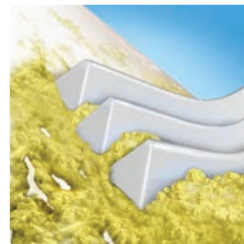
### Wide



- Removes up to 25% more plaque<sup>1</sup> with triangular bristles
- Cleans posterior teeth easily with bendable neck
- Better comfort, control and grip with flexible rubberized handle
- Stays clean between uses with antibacterial bristles<sup>2</sup>
- Coated wire helps prevent galvanic shock

**Antibacterial<sup>2</sup>  
Protected Bristles**

**Triangular-shaped bristles  
remove up to 25% more plaque!**



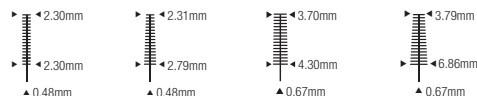
**Triangular  
Bristles**



**Conventional  
Round Bristles**



**4.7**



### Variety Pack

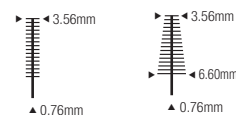
- 9- Ultra Tight
- 9- Tight
- 9- Moderate
- 9- Wide

Item	Ultra Tight	Tight	Moderate	Wide	Pkg
Go-Betweens®	871	872	3612	3614	3615 36/box



## Proxabrush® Trav-Ler®

**Antibacterial<sup>2</sup>  
Protected Bristles**



Item	Cylindrical	Tapered	Pkg
Trav-Ler®	1612	1614	36/box

1. Data on file. DOF-001

2. Bristles contain an antibacterial agent to inhibit bacterial growth for continual bristle protection. The agent does not protect against disease. Patients should always rinse their brushes before and after each use.

3. Source: SDM data December, 2016.

## Proxabrush® Classic

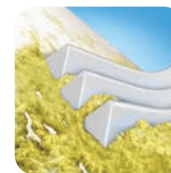
The #1 selling handle and refill system<sup>1</sup>



- Soft rubber grips for added comfort and control.
- Removes up to 25% more plaque<sup>2</sup> with new triangular bristles.
- Nylon-coated wire core provides comfort and will not cause galvanic sensitivity or scratch implants.
- Wide variety of brush sizes and styles.



Removes up to 25% more plaque<sup>2</sup>



New  
Triangular Bristles



Conventional  
Round Bristles

Antibacterial<sup>3</sup>  
Protected Bristles

Item	Single	Dual	Pkg	
Handles	611	605	12/bx	(Brushes not included)
Item	Tight	Moderate	Wide	Ultra Wide
Refills	414PA	612PA	614PA	618PA
Bulk	-	612BC	614BC	618BC
				18 packs of 2
				200/bx

Compatible with Proxabrush® models 605, 610 and 611.

## Proxabrush® Snap>Ons Dual-Ended Handle and Refills



- Removes up to 25% more plaque<sup>2</sup> with triangular bristles.
- Double ended handle for patients who require the use of different size refills.
- Ergonomically shaped handle for easy maneuverability and better control.

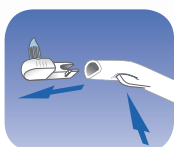


Item	Single	Dual	Pkg	
Handles	625	640	12/bx	
Item	Cylindrical	Tapered		
Single End - Starter Kit (handle & refills)	627	-	626	-
Refills Moderate	622PA	-	624PA	-
Refills Ultra Tight	-	422C	-	424C
				18 packs of 2
				12 packs of 2

Antibacterial<sup>3</sup>  
Protected Bristles

1. Source: SDM data December, 2016.
2. Data on file. DOF-001
3. Bristles contain an antibacterial agent to inhibit bacterial growth for continual bristle protection. The agent does not protect against disease. Patients should always rinse their brushes before and after each use.

## Sulcus Brush



- Removes plaque along the gumline to help maintain healthy gums and prevent periodontal disease.
- Soft antibacterial\*\* bristles provide effective and gentle cleaning. Perfect for cleaning around crowns, bridges, braces, lingual wires and implants.
- Two angles allow for easy access to all areas of the mouth, including the lingual (A) and buccal (B) gumlines.
- Easy to use Proxabrush® Snap>Ons Dual-Ended handle.

Antibacterial\*\*  
Protected Bristles

Item	Pkg
642 Snap>Ons Sulcus Brush - Starter Kit (handle & refills)	dozen

\*\*Contains AgION™ silver zeolite antibacterial for continuous bristle protection during the recommended life of the brush. Bacterial growth that may affect the bristles is inhibited. The AgION™ silver zeolite antibacterial does not protect you against disease. As always, rinse your brush.





## Dental Floss

### Patient sample size floss tub design!

#### Expanding® Dental Floss



Pre-Expansion



Post-Expansion

- Thin and easy to insert, even between the tightest contacts.
- Expands during use to clean more tooth surface.
- Multiple filaments and texturized fibers for exceptional cleaning.
- Gentle on gums and ideal for patients with tooth and/or gingival sensitivity and gingival recession.

**SUNSTAR  
EXCLUSIVE**

#### ButlerWeave® Dental Floss



- Unique woven design effectively removes plaque between teeth and below the gumline.
- The unique interlacing process produces a strong, smooth, shred-resistant floss.

#### Eez-Thru® Dental Floss



- Non-stick floss glides easily between even the tightest contacts.
- Uses a special PTFE (polytetrafluoroethylene) material which slides effortlessly between teeth and below the gumline.
- Monofilament construction is exceptionally strong and shred-resistant.
- Satin-like finish is soft and gentle on gums.

**Compares to  
Glide®**

#### Fine Dental Floss



- Thin, shred-resistant floss for cleaning between tightly spaced teeth and below the gumline.
- Special "S" twist fibers for both durability and spreadability to effectively remove and carry away plaque.

	<div><div>GOLD ADVANTAGE</div><div>FREE* ITEM</div></div> <div>Unwaxed</div>		<div><div>GOLD ADVANTAGE</div><div>FREE* ITEM</div></div> <div>Waxed</div>		<div><div>GOLD ADVANTAGE</div><div>FREE* ITEM</div></div> <div>Waxed Mint</div>		<div><div>GOLD ADVANTAGE</div><div>FREE* ITEM</div></div> <div>Waxed Tutti-Frutti</div>		<div><div>GOLD ADVANTAGE</div><div>FREE* ITEM</div></div> <div>PTFE</div>		<div><div>GOLD ADVANTAGE</div><div>FREE* ITEM</div></div> <div>PTFE Mint</div>	
Size	4YD	200YD	4YD	60YD	4YD	33YD	4YD	60YD	4YD	4YD	4YD	4YD
Expanding®	-	-	-	-	2030PA	2030RYB	-	-	-	-	-	-
Eez-Thru®	-	-	-	-	-	-	-	-	-	2010	-	2014
ButlerWeave®	-	-	1115	1155M	-	-	1815	1855M	1415	-	-	-
Fine	515	540	-	-	-	-	-	-	-	-	-	-

4yd - 144/box, 33yd - 12/bag, 60yd - 12/bag and 200yd - 6/bag

Glide® is a registered trademark of Procter & Gamble.



### Eez-Thru® Floss Threaders

*The #1 selling Floss Threader<sup>1</sup>*



- Versatile nylon loop helps patients thread floss through spaces where most other products cannot reach: under bridges, between connected crowns, around orthodontic appliances, lingual wires and implants.

Item	Pkg
840 Eez-Thru® Floss Threaders	1 box / 100 env. of 5

1. Source: SDM data December, 2014



### EasyThread® Floss



GUM® EasyThread® Floss is designed to make flossing around braces, bridges, and implants easy.

- Stiff threader sections provide easy access to hard-to-clean spaces without irritating the gums.
- Double-ended threader sections to maximize cleaning with each strand.
- Features "puffy" floss designed for enhanced plaque removal.
- Innovative, hygienic packaging reduces tangles and waste.
- Office dispenser is rewindable to ensure just the right amount of floss is dispensed.

Item	Pkg
3200D EasyThread® Floss Patient Packs	1 pkg. / 100 env. of 5
3210D EasyThread® Floss Office Dispensers	1 pkg. / 6 dispensers of 50



### Flossmate Floss Handle



- Longer, curved fingers allow access to posterior teeth and make it easy to place floss between teeth without interference from the handle.

Item	Pkg
845 Flossmate Floss Handle	1 Dozen / box



## Flossers

### Angled Flossers



- Effectively removes plaque between the teeth.
- Angled Flosser design effectively reaches back teeth.
- Floss engineered not to shred, break or sag.

Item	Pkg
898 Angled Flossers	48 packs of 2



3.6



### Flossers

**NEW**



- Effectively removes plaque between the teeth.
- Fresh Mint flavoring.

#### NEW Comfort Slide Flossers

- Designed for tight spaces.
- PTFE-coated string floss easily slides between teeth.

Item	Pkg
887 Comfort Slide	48 packs of 2

891 Professional Clean	48 packs of 3
888 Advanced Care Flossers w/Vitamin E & Fluoride	48 packs of 3



### NEW Control Grip Handle!

### Crayola™ Kids' Flossers



- Extra-strong shred-resistant floss that is gentle on young gums.
- Ergonomic handle in three fun designs and colors.
- Grape flavor and fluoride coating
- Easy for parents to help kids floss and build healthy habits early.

Item	Pkg
895 - Crayola™ Kids Flossers	48 packs of 3





Rincinol® Whole Mouth Oral Pain Reliever Rinse



Convenient office dispenser



- Great soothing rinse following invasive oral procedures.
- Revolutionary bio-adherent mucosal coating for oral soft tissue pain and aphthous ulcers.
- For fast, long lasting pain relief. Does NOT numb or sting the mouth.
- Aloe-vera based.
- Chairside and at home pain management.

Item	Unit Size	Pkg.
1770	4oz. Bottle	12/box
1771	Sachet	36/box

*Rincinol® is very soothing, and I always share this product with patients who have mouth ulcers, and anyone going through chemo.*

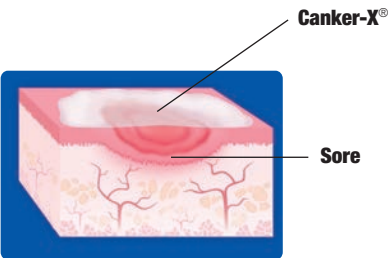
- Laura Cuthbertson, RDH

Canker-X® Site Specific Oral Pain Reliever Gel



Convenient office dispenser

- Gel provides site specific application.
- The same pain relief technology as Rincinol® in a gel.
- Aloe-vera based.
- Chairside and at home pain management.



Dramatization: Actual coating is invisible.

Item	Unit Size	Pkg.
1773	Sachet	36/box



### Soft grip, ideal comfort and control

#### Butler® Eez-Touch Disposable Prophyl Angles

- Soft grip provides greater control
- Reduces vibration, less fatigue
- Soft or Firm Cup and Tapered Brush

Item	Pkg
1201 Soft Cup	200/box
1202 Firm Cup	200/box
1203 Tapered Brush	50/box



4.4



### Ideal for your ortho patients

#### Butler® DuroPro® Disposable Prophyl Angles

- Low profile
- Effective cleaning and stain removal
- Durable drive mechanism provides smooth and consistent performance

Item	Pkg
1207 Soft Cup	200/box
1205 Firm Cup	200/box
1209 Tapered Brush	50/box



### For your custom care needs

#### Butler® Prophiciency® Prophyl Angles

Featuring **ButlerBloom®** Contouring Cup designed to:

- Clean and polish effectively interproximally, subgingivally on all tooth surfaces
- Effective cleaning and stain removal

Item	Pkg
1211P - Clean & Polish	200/box
1215P - Clean & Polish	50/box
1217P - Polish	200/box

### Ideal for all your patients

#### Butler® Prophyl Paste

- Excellent for stain removal, but gentle on enamel.
- Splatter-free formula. Contains 1.23% fluoride.
- Free prophyl ring in every box.



Flavor	Style	Fine	Medium	Coarse	Plus
Bubble Gum	Unit dose 200/Box	1220B	-	-	-
Cherry	Unit dose 200/Box	-	1221CA	1222CA	-
Mint	Unit dose 200/Box	-	1221MA	1222MA	1223MA

## Butler® White Fluoride Varnish with Xylitol



- 5% Sodium Fluoride Varnish, sweetened with Xylitol.
- Thin and easy to apply, so it feels smooth on the teeth.
- Desensitizes dentin.
- Contains 22,600 ppm fluoride.
- White varnish blends with natural tooth color.
- 2 great flavors for adults and children:  
Melon Madness and Bubble Gum

Item	Pkg
1217M 0.5 mL Tub - Melon Madness	36/box
1217B 0.5 mL Tub - Bubble Gum	36/box

## GUM® Red-Cote® Disclosants

- Highlights harmful bacterial plaque on tooth surfaces and shows the patient areas where more brushing and flossing are needed.
- Educational chairside tool.
- Quick and easy application.
- In tablet form for convenient at home use.
- Cherry flavor.



Item	Form	Pkg
800	Tablet	Cello Wrapped (248)





## Oral Care Kits

### Orthodontic Premium Kit (ORTHKITPRA) dozen



**This kit provides the best products an orthodontic patient can use to maintain a healthy smile.**

*Kit contents:*

- GUM® Orthodontic Toothbrush
- GUM® Proxabrush® Go-Betweens® Cleaners – Moderate Tapered
- GUM® Soft-Picks® Original
- GUM® ButlerWeave® Mint Waxed Floss 12 yds
- GUM® Eez-Thru® Floss Threaders
- GUM® Orthodontic Wax – Unflavored
- GUM® Toothbrush Cover
- GUM® Rincinol® Sachets (2)
- Orthodontic Instructional Brochure
- Clear, Vented Bag with Business Card Pocket

Item	Pkg
ORTHKITPRA Orthodontic Premium Kit	1 Dozen / box

### Orthodontic Standard Kit (124KN) dozen



**This kit provides the basic preventive products for every orthodontic patient.**

*Kit contents:*

- GUM® Orthodontic Toothbrush
- GUM® Proxabrush® Go-Betweens® Cleaners – Tight, Moderate and Wide
- GUM® EasyThread® Floss
- GUM® Orthodontic Wax – Mint flavored

Item	Pkg
124KN Orthodontic Standard Kit	1 Dozen / box

### Implant Care Kit (IMPKIT) dozen



**This kit provides a wide variety of oral care products for patients with implants.**

*Kit contents:*

- GUM® Delicate Post-Surgical Toothbrush
- GUM® Technique® Deep Clean Sensitive Compact Toothbrush
- GUM® End-Tuft Toothbrush
- GUM® Proxabrush® Go-Betweens® Cleaners – Wide Tapered
- GUM® Soft-Picks® - Original & Wider Spaces
- GUM® EasyThread® Floss
- GUM® Eez-Thru® Floss
- GUM® Rincinol® Oral Pain Relieving Rinse
- GUM® 2-in-1 Tongue Cleaner
- Patient Education Pamphlet with \$3.00 in retail coupons
- Clear, Vented Bag with Business Card Pocket

Item	Pkg
IMPKIT Implant Care Kit	1 Dozen / box

## 2-in-1 Tongue Cleaner

Up to 50% of bad breath comes from residues on the tongue.  
75% of bad breath compounds are removed by tongue cleaning.\*



Item	Pkg
760	6/box

- Two rows of bristles reach into tiny grooves on the tongue's surface to dislodge bacteria and food particles.
- Two rows of serrated scrapers gently remove bacteria and food particles while cleaning the tongue's surface.
- Narrow head reduces gag reflex.

\*Pedrazzi V, et al. Tongue - Cleaning methods: a comparative clinical trial employing a toothbrush and a tongue scraper. *J Periodontol* 2004 Jul; 75: 1009-1012.

## Orthodontic Wax



Item	Pkg
723 Orthodontic Wax w/Vitamin E	2 dz/box
724 Mint Orthodontic Wax w/Vitamin E+Aloe Vera	2 dz/box

- Clear wax adheres to orthodontic appliances to help relieve irritated tissue.
- Available in unflavored (723) and mint (724) in a portable container.

## Butler® Clear Dip® Solution

- Prevents fogging and image distortion on mouth mirrors.
- Pleasant tasting, non-toxic formula.
- Active Ingredient
- Especially great for heavy mouth breathers



Item	Pkg
716	16 oz bottle



It is perfect for working with a patient who is a mouth breather (and it seems just about every patient does that from time to time) but I find it most valuable when working with the ultrasonic scaler and the water sprays onto the mirror. When dipped in the Clear Dip, the water spray slides right off the mirror, and the mirror stays clear --visibility is not compromised. From a patient's perspective, it tastes good-- I have had patients comment on that flavored solution for the mirror-- they think it is something to make the mirror taste better! It is a win/win product for the hygienist and the patient. It is easy to use, it keeps the mirror clear and free of fog and water droplets so the hygienist has good visibility, and the patient is happy that the hygienist applied something to the mirror to make it taste better!

—Christel Koppel Autuori, RDH, FAADH, MA

## Mouth Mirror



- Disposable mirror with plastic handle (25mm diameter).
- Glass mirror (not foil) provides detailed reflective image.

Item	Pkg
706	dozen

# Ask Your Sunstar Representative To Find Out How To Get 20% Off Most Of The Items You Buy



**Gold Plan offers up to  
20% Off on select products,  
Plus:**

- **FREE Shipping**
- **FREE Imprinting**
- **Automatic Shipments**

**Order Now!** Call Sunstar at 1-800-528-8537 or call your Sunstar representative

[www.GUMbrand.com](http://www.GUMbrand.com)

## How to Order

### Professional



#### Phone Sunstar

Call: 1-800-528-8537  
or your local Sunstar  
representative.



#### Phone Dealer

Call your local dealer branch  
or sales representative to place  
an order for Sunstar products.

### Consumer



#### Call Sunstar

1-888-777-3101.  
Customer Service will  
take your order.



#### Web

[www.GUMbrand.com](http://www.GUMbrand.com)



Follow us on  
Facebook



Follow us on  
[twitter](https://twitter.com/sunstargum)  
[@sunstargum](https://twitter.com/sunstargum)

# SUNSTAR

**GUM** **BUTLER** **GUIDOR**

#### Sunstar Americas, Inc.

301 East Central Road  
Schaumburg, IL 60195  
Tel: 1-800-528-8537  
[www.GUMbrand.com](http://www.GUMbrand.com)

