

Cement

Ready-mixed RelyX™ Unicem 2 Automix Cement is applied directly in the root canal with an endo tip.

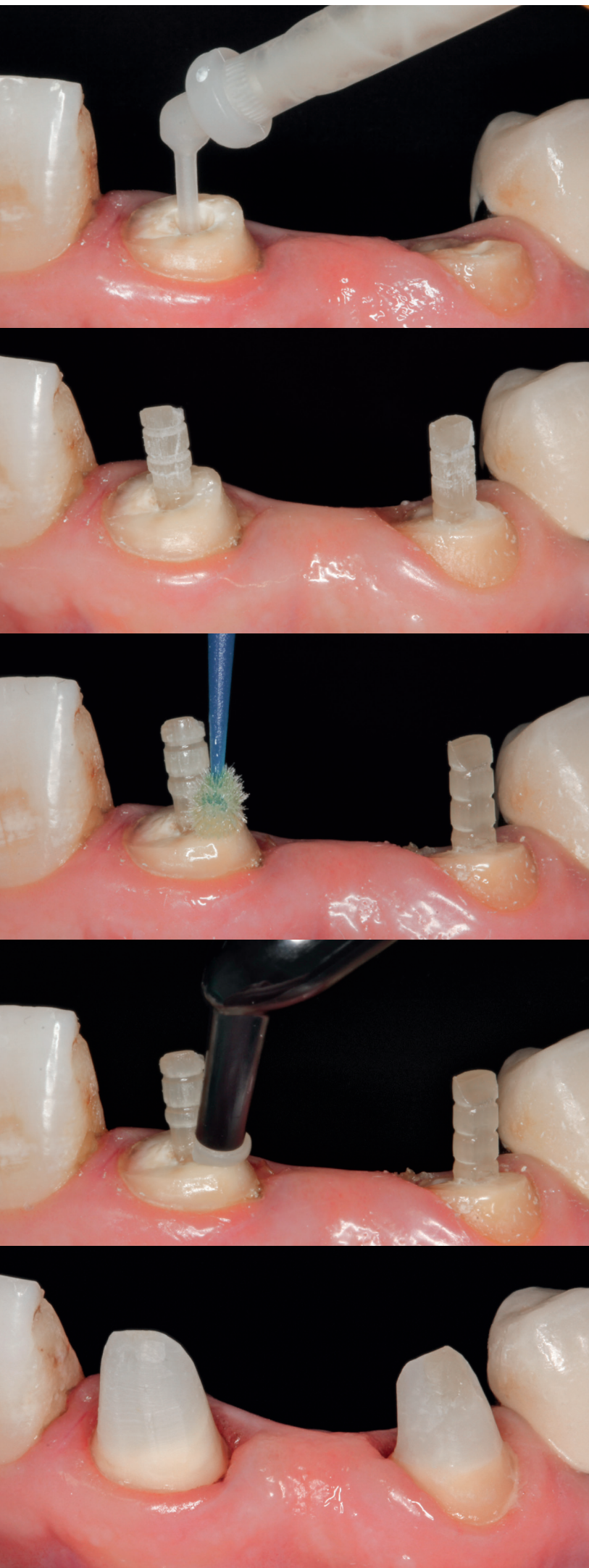
CLINICAL TIP:

We recommend using a 3M™ ESPE™ Retraction Capsule in cases where moisture management during post seating and core build-up is required.



Post

RelyX™ Fiber Post 3D Glass Fiber Posts are placed in the root canal. No pre-treatment is required.



Adhesive

Scotchbond™ Universal Adhesive is applied. No additional primer is required.

Core build-up

Building the core around the post with Filtek™ Bulk Fill Posterior Restorative.



Post and core build-up after final preparation.

Ordering Information		
Item No.	Product Information	
RelyX™ Fiber Post 3D Glass Fiber Post		
56957	Introductory Kit 20 posts sizes 0, 1, 2, 3 (5 posts of each size), 5 drills sizes 0, 1, 2, 3, Universal (1 drill of each size)	
56958	Trial Kit with RelyX™ Unicem 2 Automix Cement 10 posts sizes 1, 2 (5 posts of each size), 3 drills sizes 1, 2, Universal (1 drill of each size), 1 RelyX™ Unicem 2 Automix Syringe A2 – 8.5g, 10 mixing tips, 10 endo tips	
56960	Post and Core Build-up Kit with RelyX™ Unicem 2 Automix Cement 1 Trial Kit RelyX™ Fiber Post 3D/RelyX™ Unicem 2 Automix Cement, 20 capsules Filtek™ Bulk Fill Posterior Restorative A3 – 0.2g each, 1 vial Scotchbond™ Universal Adhesive – 5 ml	
Refills posts and drills		
56948	10 posts, size 0 (1.1 mm dia), white	
56949	10 posts, size 1 (1.3 mm dia), yellow	
56950	10 posts, size 2 (1.6 mm dia), red	
56951	10 posts, size 3 (1.9 mm dia), blue	
56873	1 drill, size 0 (1.1 mm dia), white	
56864	1 drill, size 1 (1.3 mm dia), yellow	
56865	1 drill, size 2 (1.6 mm dia), red	
56866	1 drill, size 3 (1.9 mm dia), blue	
56867	1 Universal drill	
RelyX™ Unicem 2 Automix Self-Adhesive Resin Cement		
Refills		
56846	Shade A2 Universal 1 syringe – 8.5g, 15 mixing tips (regular), 5 mixing tips (wide), 5 endo tips	
56847	Shade A3 Opaque 1 syringe – 8.5g, 15 mixing tips (regular), 5 mixing tips (wide), 5 endo tips	
56848	Shade Translucent 1 syringe – 8.5g, 15 mixing tips (regular), 5 mixing tips (wide), 5 endo tips	
Value Packs		
56849	Shade A2 Universal 3 syringes – 8.5g, 30 mixing tips (regular), 20 mixing tips (wide), 15 endo tips, 5 intra-oral tips	
56857	Shade A3 Opaque 3 syringes – 8.5g, 30 mixing tips (regular), 20 mixing tips (wide), 15 endo tips, 5 intra-oral tips	
56858	Shade Translucent 3 syringes – 8.5g, 30 mixing tips (regular), 20 mixing tips (wide), 15 endo tips, 5 intra-oral tips	
Accessories – Cement Mixing Tips		
56851	30 mixing tips (regular)	
56919	15 mixing tips (wide)	
56918	15 mixing tips (wide), 15 intra-oral tips	

Item No.	Product Information	
Scotchbond™ Universal Adhesive		
41254	Introductory Kit 1 vial Scotchbond™ Universal Adhesive – 5 ml, 50 disposable mixing wells, 50 disposable microbrushes, 1 etchant syringe – 3 ml, 25 dispensing tips for etchant syringe	
41258	Refill 1 vial Scotchbond™ Universal Adhesive – 5 ml	
Filtek™ Bulk Fill Posterior Restorative		
Refill	Item No.	Item No.
Shade	Syringe	Capsule
	incl. 1 syringe – 4 g	incl. 20 capsules – 0.2g each
A1	4863A1	4864A1
A2	4863A2	4864A2
A3	4863A3	4864A3
B1	4863B1	4864B1
C2	4863C2	4864C2
Filtek™ Bulk Fill Flowable Restorative		
Refill	Item No.	Item No.
Shade	Syringe	Capsule
	incl. 2 syringes – 2g each, 20 dispensing tips	incl. 15 capsules – 0.2g each
A1	4862A1	4861A1
A2	4862A2	4861A2
A3	4862A3	4861A3
Universal	4862U	4861U
3740T	20 dispensing tips 19-gauge	
3M™ ESPE™ Retraction Capsule		
56941	Refill Pack: 25 capsules	
56942	Value Pack: 50 capsules	
Elipar™ DeepCure-S LED Curing Light		
76975	1 stainless steel handpiece (cordless), charging base (230V), Li-ion battery, 10 mm light guide, eye shield	
Elipar™ DeepCure-L LED Curing Light		
76973	1 lightweight handpiece (built-in Li-ion battery), universal power supply with 5 adapters, 10mm light guide, eye shield, 3 curing discs	



3M Oral Care
2510 Conway Avenue
St. Paul, MN 55144-1000
USA
1-800-634-2249

3M Canada
Post Office Box 5757
London, Ontario N6A 4T1
Canada
1-888-363-3685

3M.com/RelyX3D

3M, “3M Science. Applied to Life.”, ESPE, Elipar Filtek, RelyX and Scotchbond are trademarks of 3M Company or 3M Deutschland GmbH. Used under license in Canada. All other trademarks are owned by other companies. Please recycle. Printed in U.S.A.
© 3M 2015. All rights reserved. 70-2013-0728-0 rev 8/2016

Science.
Applied to Life.™

3M Oral Care

**3M post and core solution.
Complexity simplified.**

3M post and core solution. Featuring RelyX™ Fiber Post 3D.

Fewer clinical steps, fewer products.

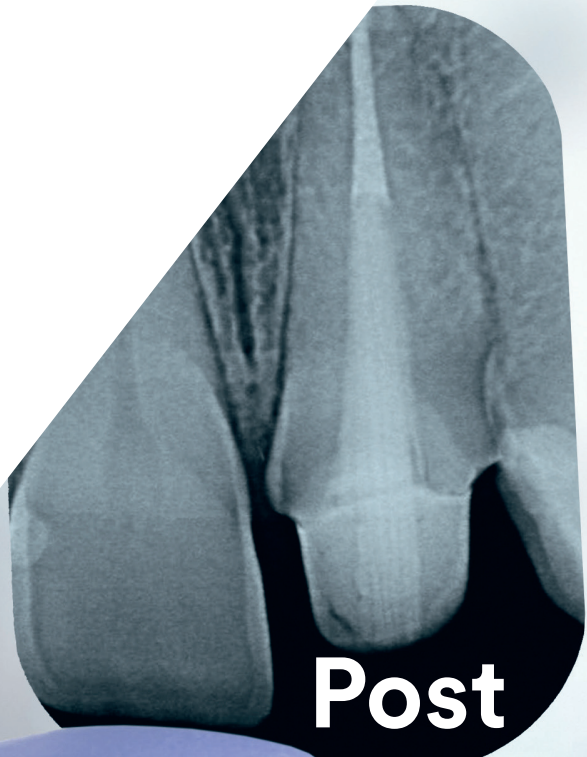
For predictable results – in less time.

We know: The endodontic procedure is very complex. So the simpler and more reliable the endodontic restorative procedure is, the better – for both the dentist and the patient. The excellent 3M post and core solution is a big step forward in this regard: With significantly fewer clinical steps and fewer products, it lets you work faster, easier and more efficiently.

All you need to do is take four steps.

The 3M post and core solution not only simplifies your work but also helps you deliver predictable, robust outcomes – from root to core. All you need is the new RelyX™ Fiber Post 3D Glass Fiber Post plus three other easy-to-use products from 3M Oral Care: RelyX™ Unicem 2 Automix Cement, Scotchbond™ Universal Adhesive, and Filtek™ Bulk Fill Posterior Restorative.

These four products – each of them proven to make your work more reliable and efficient – have one common objective: Simplify the complex!



Post



RelyX™ Fiber Post 3D Glass Fiber Post – With a unique 3D design for more confidence

RelyX Fiber Post 3D builds on the 8 years of clinical success of the proven product RelyX Fiber Post. Now, we have further improved it to enhance your peace of mind:

- Higher mechanical retention to the core build-up material thanks to coronal 3D macro retention.
- Strong bond in the root canal due to its microporous surface without a silanating step.
- Better post position control thanks to excellent radiopacity.
- Low risk of root fracture due to dentin-like elasticity.
- More esthetic option than a metal post.

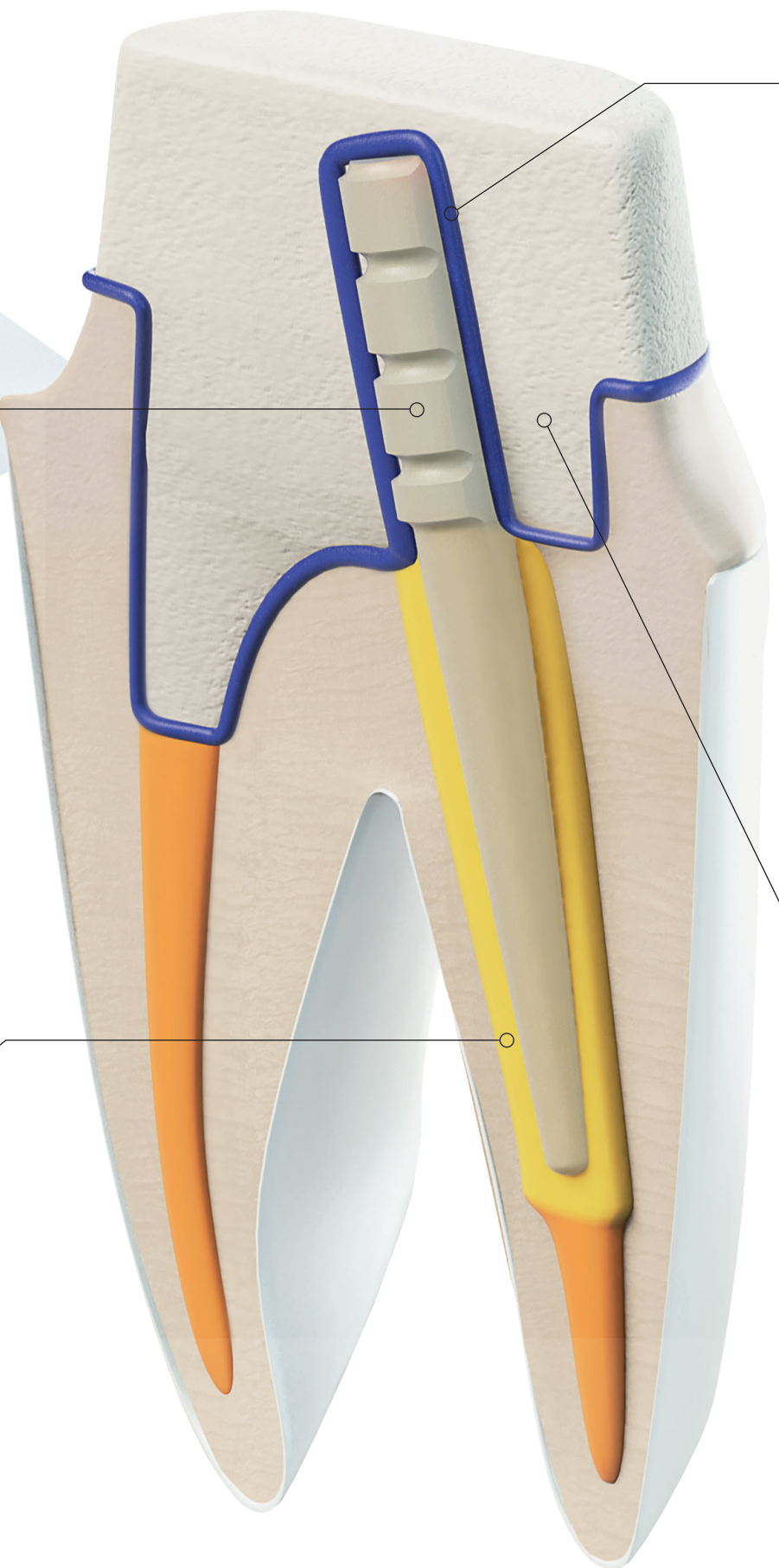
Cement

RelyX™ Unicem 2 Automix Self-Adhesive Universal Resin Cement

RelyX Unicem 2 Automix Cement not only offers excellent bond strength but also saves you precious time, as you do not need to etch, prime or bond.

The handy automix syringe, together with the endo tip, lets you apply the ready-mixed cement directly in the root canal from bottom to top.

With one application – and virtually no voids.



Adhesive

Scotchbond™ Universal Adhesive

Scotchbond Universal Adhesive provides a reliable bond of the core build-up material to the post and tooth structure – with no need for an additional primer.

One application – done!

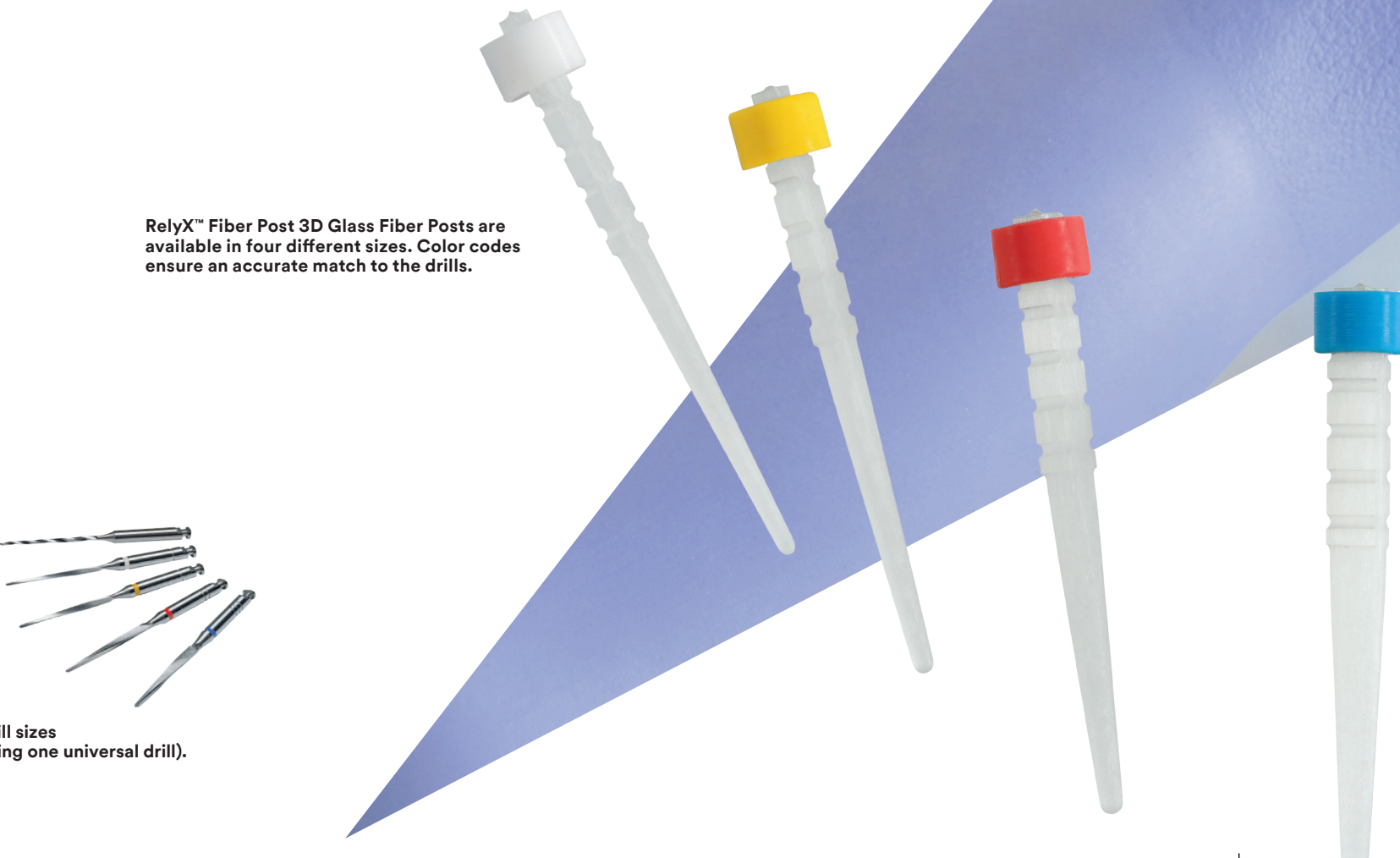


Core build-up

Filtek™ Bulk Fill Posterior Restorative

Excellent material and handling characteristics make Filtek Bulk Fill Posterior Restorative a favorite core build-up material, especially for big lesions in combination with a post: The new capsule design ensures a void-free application. The material is sculptable but also easy to adapt to both tooth structure and post. And, for easier preparation, the cured material cuts like dentin. Core build-ups can be done faster and easier.

With one application up to 5 mm.



RelyX™ Fiber Post 3D Glass Fiber Posts are available in four different sizes. Color codes ensure an accurate match to the drills.



Five drill sizes
(including one universal drill).