

# DR. RONALD GOLDSTEIN'S COLORVUE® GOLDSTEIN PROBE

| For Diagnostic & Restorative Procedures

PERIODONTAL



RESTORATIVE



0.5-1-1.5-2-2.5-3-4-5-6-7-8-9-10-11-12-13



## DIAGNOSTIC USE:

Precise probing can be a challenge due to lack of contrast and visibility. The measurements are typically in 3 mm increments. The new Colorvue probe was designed in 1/2 mm increments and extends up to 3 mm for increased accuracy especially in measuring sulcular depth for margin placement. The use of bright colors to differentiate these measurements makes the probing process much more efficient and accurate.

## RESTORATIVE USE:

When probing potential infrabony areas or for other defects, a standard metal probe can cause the patient noticeable discomfort. The Colorvue Goldstein probe features a narrow, flexible tip which alleviates this feeling of irritation allowing for a more positive patient experience.

## PARTCODES

Kit 1 Handle + 7 Tips

| **PPSGKIT6**

12 Replacement Tips

| **PPSG12PT**

**DR. RONALD GOLDSTEIN** is currently Clinical Professor of Oral Rehabilitation at Georgia Regents University School of Dentistry, Augusta, Georgia, Adjunct Clinical Professor of Prosthodontics at Boston University Henry M. Goldman School of Dental Medicine, and an Adjunct Professor of Restorative Dentistry at The University of Texas Health Science Center at San Antonio, Texas.

Dr. Goldstein has presented continuing education courses at more than twenty universities and lectured at over 700 dental meetings worldwide. He is a contributor to ten published texts and author of the text *Esthetics In Dentistry*, 3rd edition to be published by Wiley in 2016. His best-selling consumer book for the public entitled *Change Your Smile*, now in its fourth edition, is also published by Quintessence, and has been read by over 2,000,000 people and has been translated into twelve languages.



How the best perform



## DIAGNOSTIC USES

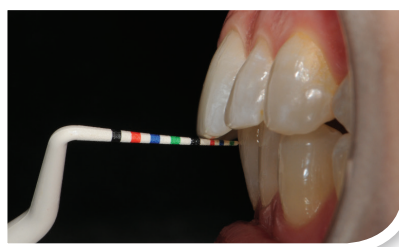
Faster and more accurate periodontal probing using the easy-to-read colored markings.



Instant, exact measurement of tissue recession.



Immediate measurement of orthodontic problems such as overjet.



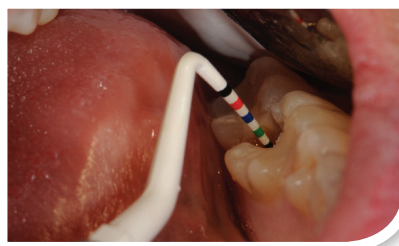
## RESTORATIVE USES

Precise sulcular depth measurement - critical in subgingival margin placement.

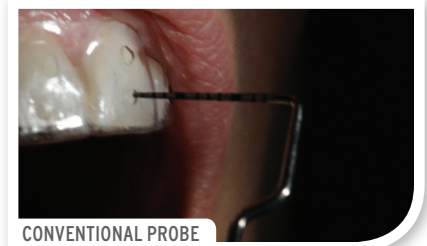


CONVENTIONAL PROBE

Checking tooth size both before and during procedures (this can be done in virtually all classes of tooth preparations).



Aiding in predicting sufficient thickness of both veneer and crown preparations, in combination with the vacuform matrix (made from the wax-up of the proposed ceramic restorations with small holes cut on both gingival and incisal areas to measure if adequate thickness is available).



CONVENTIONAL PROBE

Visit us online at [Hu-Friedy.com](http://Hu-Friedy.com)

©2016 Hu-Friedy Mfg. Co., LLC. All rights reserved. The techniques described herein are for illustrative purposes only. The technique(s) actually employed in each case must always depend upon the independent medical judgment of the doctor as to the best mode of treatment for each patient. HF-260/0416

**Hu-Friedy**