



## Instructions For Use Prophy Angle E-Type Attachments

**Beyes**  
The Next Standard

### Table of Contents

- Before You Begin
- Safety Information
- Technical Specifications
- Handpiece and Prophy Cup Placement
- Handpiece and Prophy Cup Removal
- Lubrication
- Sterilization
- Warranty



**WARNING!**  
(Risk of injury)



**ATTENTION!**  
(To prevent damage)



Thermal washer  
disinfectable



Sterilizable  
up to the stated  
temperature

### Before You Begin

Please read this Operator's Manual prior to using your Slow Speed Attachments. The use of these products is intended for use by trained dental personnel. We recommend that you retain this manual for future reference. This manual includes several attachment models so please refer to the Technical Specifications table to insure the model of your attachment is included.

### Safety Information

- Slow speed handpieces and attachments should be sterilized after each patient to prevent any transmission of infectious organisms.
- Suitable hygienic measures must be taken to prevent cross contamination between patients, operators and other personnel.
- Only operate this slow speed handpiece when the attachments and polishing cups/brushes are properly seated.

### Technical Specifications

Model	CS1-CH08	CS1-CH09
Maximum Speed	40,000(rpm)	30,000(rpm)
Prophy Cup Type	Snap-On	Screw On

### Mounting attachments to the motor

Slide the attachment onto the nose of the slow speed motor until it clicks into place. Check for secure connection. To remove an attachment, simply pull the attachment away from the motor. Fig 1

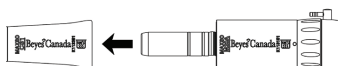


Fig 1

### Load the prophy cup

#### CS1-CH08

Snap the prophy cup on to the mandrel. Fig 2

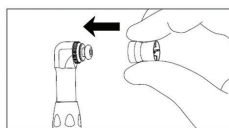


Fig 2

#### CS1-CH09

- Screw the prophy cup into the head.
- Insure the rotation of the prophy cup is in a clockwise direction. Fig 3

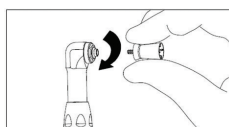


Fig 3

### Removing the Prophy Cup

#### CS1-CH08

Pull the prophy cup off the mandrel. Fig 4

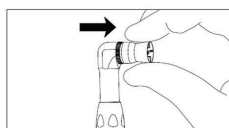


Fig 4

CS1-CH09  
Unscrew the prophy cup from the head. Fig 5

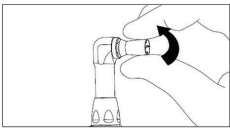


Fig 5

Lubrication

Lubricate with Beyes Spray Lubricant after each use and/or before autoclaving.  
Fig 8

- Mount the E-type spray nozzle into the spray port.
- Shake the can 3-4 times to well mix lubricant and propellant.
- Insert the E-type spray nozzle in the rear of the handpiece and spray for approximately 2-3 seconds until the oil comes out of the handpiece

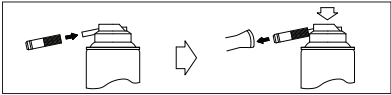


Fig 6

Caution

- Be sure to hold the handpiece firmly to prevent the handpiece from slipping out of hand by the spray pressure when lubricating.
- Supply lubricant until it comes out of the handpiece head (for approx. 2 seconds).
- Hold the Beyes Spray can upright.

Sterilization

Handpiece must be cleaned and sterilized between patient uses.  
Wrapped steam sterilize handpiece in autoclave

	Gravity Displacement	Pre-vacuum (Dynamic Air Removal)	
Temperature	132 °C	121 °C	132 °C
Full cycle time (holding time)	15 min	20 min	4 min
Min. drying time	20 min		

Check autoclave setting before sterilization

**WARNING:** unwrapped steam sterilized handpiece should be used immediately after sterilization.

Do not exceed the sterilizer manufacturer’s guidelines for load capacity.

**CAUTION:** Use steam sterilization exclusively for complete sterility. Never dry heat sterilize, ultrasonically clean, or expose handpiece or swivel to chemical disinfection or cold sterilization by:


- Immersion techniques or surgical milk
- Surface wipes, Hand soaps, or Detergents
- Surface sprays
- Sterilization bags containing disinfectants

Limited Warranty

Beyes Dental Canada hereby warrants against defect in material and workmanship that for a period of 12 months from the date of purchase, this product will perform satisfactorily under normal use and service. No warranty claim can be inferred here, as wear may occur earlier or later than indicated above depending on use, frequency of sterilization and frequency of maintenance. Beyes shall under no circumstances be liable for incidental or consequential damages or damage due to improper use or maintenance.

This Warranty is subject to the following conditions  
Beyes will, without charge repair or replace (at Beyes sole discretion) any defective part/s covered in this warranty.If the conditions are met, the defective item must be returned to an authorized Beyes service center or distributor. Accompanied by the original invoice or packing list. This warranty is in lieu of all other warranties, expressed or implied .

- \* This device is not field repairable
- \* All brands are holders of their respective trademarks.

 Federal law restricts this device to sale by or on the order of a dentist, physician, or any other practitioner licensed by the law of the states in which he or she practices to use or order the use of this device.