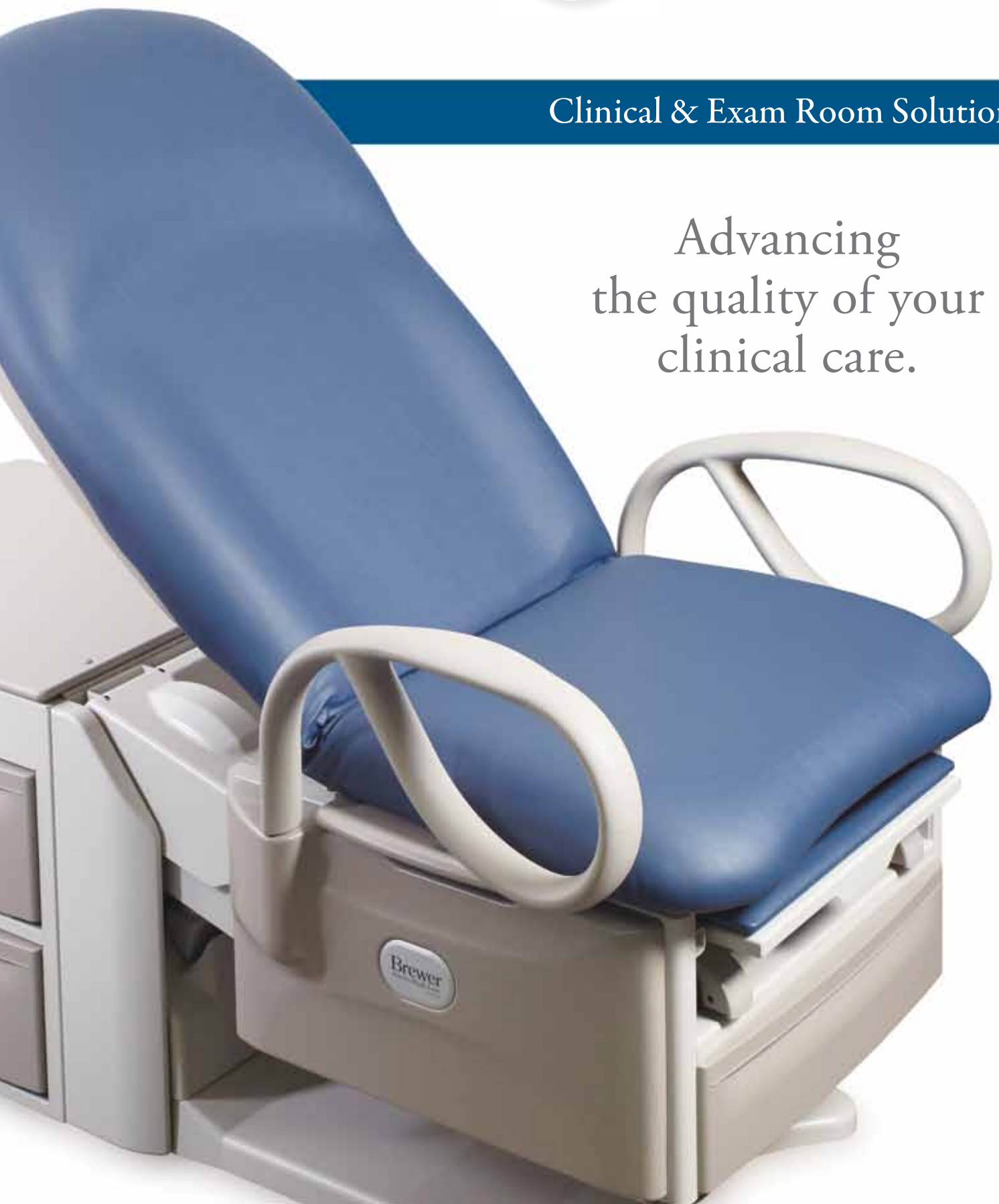


Brewer

Clinical & Exam Room Solutions

Advancing
the quality of your
clinical care.



Making a difference by design

Relentlessly adding value to your clinical care.

We understand that today's healthcare reality presents a host of challenges to your clinical, financial and operational success. That's why we work closely with medical professionals to develop the clinical and exam room advancements that matter.

Redefining patient & staff safety.

Our solutions set the standards for safe, confident handling of even your most problematic patients, including elderly, limited mobility, and bariatric populations. At the same time, they minimize caregiver handling, safeguarding the health of your staff and your bottom line.

Improving your competitive position.

Innovative designs and capabilities enable you to see the broadest possible range of patients and provide a wider range of services. They also help preserve patient dignity and enhance patient satisfaction – from the exam room to the procedure suite.



Model 6801 shown in Plush (non-standard) Admiral upholstery



Optimizing your return on investment.

At Brewer, expert ergonomic design, quality materials and made-in-USA craftsmanship come together to create lasting values. It's most evident in our major breakthroughs, like the *FLEX™* Access High-Low Exam Table that puts power table performance within virtually any practice's economic reach. But you'll also see it in the details like easy-to-clean surfaces to expedite infection control and industry-leading warranties for greater peace of mind.

So be sure to take a good look at all the ways Brewer adds value to your clinical care.

TABLE OF CONTENTS

Power Exam Tables
Access® High-Low 700 Exam Table 8
Access® High-Low Exam Table 8
FLEX™ Access High-Low Exam Table ... 10

Power Procedure Tables
Assist PRO Power Procedure Table® ... 12
Assist Power Procedure Table® 13

Fixed-Height Exam & Treatment Tables
Access® Exam Table 14
Basic Exam Table 14
Element Treatment Table 15

Medical Seating
Millennium Series 16
Century Series 18
Value Plus Series 19
Side Chairs 20
Blood Drawing Chair 20

Task Lighting
LED Eco Series 20

Support Products
Hampers 21
Utility & Equipment Carts 21
Step Stools 22
Instrument Stands 23
Mayo Stands 23
Over Bed Tables 23
Kick Buckets 23
Infusion Pump Stands 24
IV Poles 24
Waste Cans 25

Upholstery Color Options..... 26

Doing more to safeguard your patients & your practice

Leading the way in safety.

Patient handling can be a risky proposition for patients and staff. That's why Brewer is proud to take the lead in introducing the advancements that help assure patient and staff safety throughout so many exam and procedure environments.

More confident patient transfers

Only Brewer offers a power exam table that allows the seat back to be raised in the chair position when at its lowest seat height. The upright seat back, combined with safety grab bars – standard, provides three points of contact during wheelchair transfers. This unique capability helps assure more confident patient transfers, enhances patient independence, and minimizes physical demands on caregivers.





More convenient positioning for exams

Brewer's SafeGlide Leg Extension system enables caregivers to easily position the extension with their fingertips. The heavy-duty design supports patients up to 700 pounds. Also, the safety grab bars rotate 180° to facilitate patient positioning during exams.

Unmatched accident protection

Only Brewer's Access High-Low Exam Table features three safety switches, providing the most thorough protection available against accidental injury.



Creating a culture of safety for your practice

Safer products are just the beginning.

Healthcare professionals want the safest environment possible for their patients and staff. And Brewer understands just how important the team behind the products can be to making that goal a reality.

Safe patient handling expertise

Our Safe-Patient-Handling Specialists are trained to assess your care requirements in order to match the right equipment solutions to your particular needs.

On-site training

Our specialists also ensure that care teams get the expert training needed to make effective use of all the safety features Brewer incorporates into our products.

Responsive support

We also are there for you after the sale, with industry-leading warranties and a team of experts dedicated to helping you maximize the return on your safety investment.





Brewer

Visit brewercompany.com

Power Exam Tables

Advancing patient & staff safety.

Brewer Access® High-Low Exam Tables set the standard for safe patient handling. Our 18" (45.7 cm) profile in the seated position offers level transfers from wheelchairs while the rotating safety grab bars and upright seat back enable more confident transfers, with less caregiver interaction. Brewer's exclusive SafeGlide™ leg extension allows caregivers to slide the heavy-duty extension in and out with minimal effort. Seat height ranges from 18"-37" (45.7 cm-94 cm) accommodate various examination needs, while our innovative pass-through drawers and work surface give you the flexibility to make the most of compact exam room footprints. Add in more standard features and industry-best, 3-year warranties and it's easy to see how Brewer offers you superior value.

Access® High-Low Exam Table 700

Meet a wider range of patient needs with an industry-best 700 lb. (317 kg) weight capacity. Includes unmatched storage capacity and swing-out patient safety grab bars standard.

Models

6800* - Access High-Low 700 with power back

6801 - Access High-Low 700 with power back, pelvic tilt, front drawer heater and hospital-grade outlet



Model 6801 in Cabernet

Access® High-Low Exam Table

A choice of pneumatic or power back models enables you to select the design that best suits your practice needs. Includes unmatched storage capacity and swing-out patient safety grab bars standard.

Models

6000* - Access High-Low with pneumatic back

6001 - Access High-Low with pneumatic back, pelvic tilt, and front drawer heater

6500* - Access High-Low with power back

6501 - Access High-Low with power back, pelvic tilt, front drawer heater and outlet

* This model is also available in 230 Volt.



Model 6501 in Cocoa



Model 6501 shown in Black Satin upholstery

Standard Features



Safety Grab Bars



Pass-through Work Surface



SafeGlide Leg Extension

Accessories

(All Access High-Low Exam Tables)

- 99505 - Stainless steel treatment pan
- 99502 - One universal socket clamp
- 99504 - Deluxe articulating knee crutches**
- 100253 - Urology drain pan system
- 100407 - Front drawer dividers
- 100540 - Two support adapters for knee crutches -
(factory installed)
- 100550 - Two support adapters for knee crutches -
(field installed)
- 102031 - Brewer Welch Allyn® Exam Light
IV bracket - (factory installed)
- 102032 - Brewer Welch Allyn® Exam Light
IV bracket - (field installed)
- 101800 - Electrical outlet (6001 only) -
plant-installed - must order w/table

**Needs two orders of #99502 and one order of either
#100540 or #100550

Brewer

Visit brewercompany.com

FLEX™ Access Exam High-Low Tables

Step up to power exam table performance for less.

The FLEX™ Access Exam High-Low Table combines the productivity advantages of a power table with an industry-leading 700 lb. (317 kg) weight capacity in one affordable package. As a result, FLEX enables you to attract a broader patient population, perform a wider range of examinations and see more patients per day than would be possible with a fixed-height exam table. Its compact footprint and unmatched ergonomic patient access make it ideal for the confines of small exam rooms. Seat height ranges from 18"-37" (45.7 cm-94 cm) accommodate your various examination needs. Plus, optional accessories – like safety grab bars, a pass-through clinical work surface and stirrups, pelvic tilt and a drawer heater – allow you to easily adapt FLEX to your clinical needs.

FLEX™ Access Exam Table – Pneumatic Back

Pneumatic lever allows you to manually raise and lower seat back to transition from consultation to examination.

Models

5700* - FLEX Access Exam Table with pneumatic back

5701 - FLEX Access Exam Table with pneumatic back, pelvic tilt, front drawer heater and outlet



Model 5700 in Gunmetal

FLEX™ Access Exam Table – Power Back

Foot operated controls allow hands free raising and lowering of the seat back to optimize productivity as well as patient and staff safety.

Models

5800* - FLEX Access Exam Table with power back

5801 - FLEX Access Exam Table with power back, pelvic tilt, front drawer heater, and outlet

* This model is also available in 230 Volt.



Model 5801 shown in Blue Fog upholstery

Optional Kits



Pass-through Work Surface



Stirrups, Pelvic Tilt & Drawer Heater



Safety Grab Bars

Optional Kits

2102894 - Ergonomic Stirrup for 5700 and 5800
(factory installed)

2102898 - Ergonomic Stirrup for 5700 and 5800
(field installed)

2102893 - Ergonomic Stirrup for 5701 and 5801
(factory installed)

2102897 - Ergonomic Stirrup for 5701 and 5801
(field installed)

2102891 - Safety Grab Bars *(factory installed)*

2102895 - Safety Grab Bars *(field installed)*

2102892 - Pass-through laptop work surface *(factory installed)*

2102896 - Pass-through laptop work surface *(field installed)*

Accessories

99505 - Stainless steel treatment pan

99502 - One universal socket clamp

99504 - Deluxe articulating knee crutches**

100253 - Urology drain pan system

100407 - Front drawer dividers

100540 - Two support adapters for knee crutches -
(factory installed)

100550 - Two support adapters for knee crutches -
(field installed)

102031 - Brewer Welch Allyn® Exam Light
IV bracket - *(factory installed)*

102032 - Brewer Welch Allyn® Exam Light
IV bracket - *(field installed)*

**Needs two orders of #99502 and one order of either #100540 or #100550



Brewer

Visit brewercompany.com

Power Procedure Tables

Boost your profitability through Brewer flexibility.

Now, you can accommodate a broad range of clinical procedures with a single, versatile Brewer power procedure table. That means added patient peace of mind – knowing a procedure can be performed in familiar surroundings.

All Brewer power procedure tables are infinitely adjustable to quickly transition from one type of procedure to the next for maximum throughput. A seat height of 19" (48.3 cm) helps enable safe patient transfers. The ability to extend the table from 70"-89.5" (177.8 cm - 227.3 cm) allows you to handle a diverse range of patients. And multi-density, bolstered support upholstery and adjustable, three-point pivot headrest help optimize patient comfort.

Plus, all our power procedure tables feature a standard 3-year warranty.

AssistPRO Programmable Power Procedure Table®

Four preferred positions can be pre-programmed for quick, precise push-button transitions. Features a simple two-step programming process. Intuitive hand pendant and foot control included.

Model

7500 - AssistPRO Programmable Power Procedure Table



Model 7500 in Cocoa



Supine



Left Lateral Plane



Lithotomy



Proctology





Model 7500 shown in Blue Fog upholstery

Optional Accessories



Safty Grab Bars



Articulating Armboard



Deluxe Articulating Knee Crutches

Assist Power Procedure Table®

All our power procedure tables feature a 450-lb. (204-kg) weight capacity; adjustable stirrups; a tilt range of up to 30° for true Trendelenburg positioning; and a standard three-year warranty.

Model

7000* - Assist Power Procedure Table



Model 7000 in Black Satin

Accessories

- 99497 - Grab bars (pair)**
- 99499 - Articulating armboard**
- 99500 - Hand pendant kit for Assist 7000
- 99501 - Side seat rails (pair of 2)
- 99502 - One universal socket clamp
- 99504 - Deluxe articulating knee crutches (left & right)***
- 99505 - Stainless steel treatment pan
- 100253 - Urology drain pan system
- 101726 - Hand pendent replacement kit for AssistPRO 7500
- 102024 - Brewer Welch Allyn® Exam Light IV bracket (factory installed)
- 102025 - Brewer Welch Allyn® Exam Light IV bracket (field installed)

* This model is also available in 230 Volt.

** Needs one order of #99501

*** Needs one order of #99501 and two orders of #99502

Brewer

Visit brewercompany.com

Fixed-Height Exam & Treatment Tables

Traditional designs infused with Brewer's value-added touches.

Our fixed height exam tables feature the most generous storage space in their class to keep your clinic organized and running efficiently. Exclusive pass-through drawers offer easy access from either side. Our treatment table includes all steel frame construction for added dependability. All exam and treatment tables are outfitted with easy-to-clean seamless upholstery.

Access® Exam Table

Offers largest step surface in the industry for added safety. Multi-density support upholstery enhances patient comfort. Patented pass-through drawer system – standard – provides more than 6 ft³ of storage capacity as well as convenient access from either side to easily adapt to exam room environment. Simple pneumatic backrest enables easy patient positioning on this 500-lb. (226-kg) capacity unit. All backed by a standard 5-yr. warranty.

Height: 32" (81.3 cm). Width: 28" (71.1 cm).

Models

- 5000 - Access Exam Table w/electrical outlet
- 5000-SP-CN - Access Exam Table w/o electrical outlet
- 5001 - Access Exam Table with pelvic tilt, front drawer heater and outlet
- 5001-SP-CN - Access Exam Table with pelvic tilt and front drawer heater w/o electrical outlet

Accessories

- 98464 - Stainless steel treatment pan
- 100253 - Urology drain pan
- 100407 - Front drawer dividers
- 102022 - Brewer Welch Allyn® Exam Light IV bracket
(factory installed)
- 102023 - Brewer Welch Allyn® Exam Light IV bracket
(field installed)



Model 5001 in Feather

Basic Exam Table

Includes a sturdy, retractable patient step for safe patient handling. Multi-density support upholstery enhances patient comfort. Plus, the simple pneumatic backrest facilitates patient positioning on this 325-lb. (147-kg) capacity unit. All backed by a standard 3-yr. warranty.



Model 4001 in Cabernet

Models

- 4000 - Basic Exam Table
- 4001 - Basic Exam Table with drawer heater and pelvic tilt

Accessories

- 98464 - Stainless steel treatment pan
- 100253 - Urology drain pan
- 100407 - Front drawer dividers
- 102022 - Brewer Welch Allyn® Exam Light IV bracket
(factory installed)
- 102023 - Brewer Welch Allyn® Exam Light IV bracket
(field installed)



Model 4001 shown in Gunmetal upholstery

Element Treatment Table

Features a 500-lb. (226-kg) weight capacity and a standard 3-yr. warranty. Two-piece top design allows single person delivery for added freight savings. Adjustable back models have 6 positions.



Model 2240 in Deep Sea

Models

	Flat Top	Flat Top Adjustable	Pillowtop Adjustable
Basic Frame -	2010	2030	2040
w/Shelf -	2110	2130	2140
w/Shelf & Drawers -	2210	2230	2240

Accessories

10196 - Table paper strap (Qty 2)

100407 - Drawer separators (Drawer models only)

Medical Seating

Ergonomically designed to meet your practice's needs.

Seating tends to be one of the most under appreciated aspects of a clinic. Yet it can dramatically impact the productivity and health of your entire staff. That's why our ergonomic experts work closely with clinicians to develop specific comfort solutions for their specialized requirements. The Millennium Series offers the thoughtful design and premium features that help make every day on the job seem less like work. Plus, a standard five-year warranty means added peace of mind.

Millennium Series

Premium specialty seating features seamless upholstery, an 19" (48.3 cm) wide, contoured seat cushion and adjustable contoured backrest unless otherwise noted. For stability, all incorporate a 23" (58.4 cm) five-leg, powder-coated black aluminum base and 2" (5.1 cm) dual-wheel nylon casters with polyurethane tread unless otherwise noted. Weight capacity: 250 lbs. (113 kg).

Task Models

Fully adjustable forward seat tilt and synchronized seat and backrest tilt support neutral posture to reduce fatigue and back pain. Pneumatic height adjustment: 18"-24" (45.7cm-61 cm).

21435BA - w/ arm rests

21435B - w/o arm rests



*Model 21435BA
in Azure Blue*

A - Arm rests B - Backrest



Task Model 21435BA in Azure Blue upholstery



*Lab Model 21521B
in Adriatic upholstery*

Lab Models

Features 18" (45.7 cm) foot ring standard and pneumatic height adjustment:

- w/ glides: 21"-31" (53.3 cm-78.7 cm)
- w/ casters: 22"-32" (55.9 cm-81.3 cm))

21520B - w/ glides

21521B - w/ casters

Surgical Models

Offers hands-free, foot-operated pneumatic adjustment:

18.5"-23.5" (47 cm-59.7 cm) with back
20"-25" (50.8 cm-63.5 cm) without back

21340B - 18.5" (47 cm)

21340BV - 18.5" (47 cm)

vacuum-formed seat

21340 - 16" (40.6 cm)

seamless upholstery
not standard

21340V - 18.5" (47 cm)

vacuum formed seat



*Model 21521B
in Adriatic*



*Model 21340
in Black*



*Model 21340B
in Wedgewood*

Accessories

2102265 - set of 5 pressurized

locking casters (sit to lock casters)

3102277 - replacement casters (set of 5)

B - Backrest V - Vacuum formed/Seamless

Surgeon Model 21340 in Black upholstery

Brewer

Visit brewercompany.com

Medical Seating

An ideal blend of quality, comfort and value.

Brewer's ability to work quality craftsmanship and comfort-driven features into affordable seating solutions has made our Century Series and Value Plus Series popular choices at medical facilities around the world.

Century Series

Offers the comfort of a 16" (40.6 cm) wide, 4" (10.2 cm) thick poly-foam seat cushion with the dependability of a five-leg, 23" (58.4 cm) brushed aluminum accent base.

21"-28"

(53.3 cm - 71.1 cm)

Adjustable Height

Models

11001BFR

11001BVFR

11001BFR-C133

11001FR

11001VFR

11001FR-C133



*Model 11001BFR
in Cabernet*

*Model 11001FR
in Cabernet*

18"-24"

(45.7 cm - 61 cm)

Adjustable Height

Models

11001B

11001BV

11001BLCD

11001BG*

11001BFR-C133

11001B-UL

11001

11001V

11001LCD

11001G*

11001-C133

11001-UL



*Model 11001B
in Black*

*Model 11001
in Black*

* Height range 17"-23" (43.2 cm-58.4 cm)

B - Backrest FR - Footring V - Vacuum formed/Seamless
LCD - Locking casters G - Glides C133 - CAL-133 upholstery
UL - Ultraleather™ upholstery



Model 11001BFR in Cabernet upholstery



*Model 11001
in Black Satin upholstery*

Value Plus Series

Designed for affordability, each features a 15" (38.1 cm) wide, 4" (10.2 cm) thick poly-foam seat cushion and five-leg, 21.5" (54.6 cm) black ABS plastic composite base.

17.5" - 22.5"
(44.5 - 57.2 cm)
Pneumatic Height
Adjustment

Models
22500B
22500BV
22500B-C133
22500
22500V
22500-C133



Model 22500B in Ash

Model 22500 in Ash

17" - 22"
(43.2 - 55.9 cm)
Spinlift Height
Adjustment

Models
22400B
22400BV
22400
22400V



Model 22400B in Ash

Model 22400 in Ash

B - Backrest FR - Footring V - Vacuum formed/Seamless
LCD - Locking casters G - Glides C133 - CAL-133 upholstery
UL - Ultraleather™ upholstery

Task Lighting & Medical Seating

Reliable solutions for a wide range of needs.

Round out your clinical care needs with lasting Brewer values. It's a choice your staff and patients will appreciate.



LED ECO-Series Task Lighting

This eco-friendly LED light consumes significantly less energy than halogens and its 50,000-hour bulb life is twice that of other LED exam lights available. Efficient power consumption also means it remains cooler to the touch.

Yet it provides an industry-best, bright white light (more than 20,000 lux / 880 Lumens with a 5" diameter beam at 18") to drive clinical efficiency. Color temperature is 4000° Kelvin.

Conveniently position that industry-best, bright white light precisely where you need it with the flexible, "no-drift" gooseneck arm.

Model 19100

Accessories

200165 - Optional five-caster base

2102755 - Replacement bulb
(50,000-hour bulb life)



Side Chair Series

Perfect for exam room, front office or waiting room environments, these durable chairs feature steel tube frames and kick-out rear leg design to help prevent wall dings and dents.

Their contoured backrests and 2" thick poly-foam seat cushions offer plenty of comfort. Plus, they meet BIFMA (Business and Institutional Furniture manufacturer's Association) Standards.

Models

1200 - w/ sturdy plastic arm rests

1250 - w/o arm rests



Model 1200 in Ivy



Model 1250 in Saddle

Blood Drawing Chair Series

Seat alignment positions patients securely on the chair, while innovative angled armrests and easy-to-use knob height adjustments provide optimal arm position for each patient's blood draw. Features include two standard add-on work surfaces (to accommodate prep materials, paperwork and vials). Chair also meets BIFMA Standards.

An optional drawer (Model #101059) can be attached on either side of chair to keep prep materials nearby yet out of sight.

Model 1500

Accessories

101059 - Drawer option



Model 1500 in Cabernet

A single convenient source for so many quality solutions.

18" Round Linen Hamper (45.7 cm)

Durable steel construction with white powder-coat finish. Dimensions: 35.75" H x 18.25" outside diameter (90.8 cm x 46.3 cm).

Model 33330

Accessories

31331 - 18" Rope style

10 oz. cotton bag

34000 - Bag holder



Multi Purpose Cart

Strong steel frame with durable white powder coat finish. Total weight capacity: 50 lbs (22.7 kg). Dimensions with handle:

37.5" H x 19.5" W x 29" D (95.3 cm x 49.5 cm x 73.6 cm).

Baskets sold separately.



Models

63400 - Cart frame only

63021 - 12" White powder coat wire basket

63020-1 - 6" White powder coat wire basket (1 per carton)

63020-2 - 6" white powder coat wire basket (2 per carton)

Plastic Utility Cart

Includes three ABS plastic shelves, 16" W x 21.75" L (40.6 cm x 55.3 cm). Total weight capacity: 200 lbs (90.7 kg). Dimensions with handle: 28" L x 17.5" W x 35" H (71.1 cm x 44.5 cm x 94 cm).

Model 63530



18" Tilt-Top Round Linen Hamper (45.7 cm)

Durable steel construction with white powder-coat finish. Step-on pedal for hands-free use. Dimensions: 35.75" H x 18" outside diameter (90.6 cm x 45.7 cm).

Model 33334

Accessories

31331 - 18" Rope style

10 oz. cotton bag

34000 - Bag holder



Adjustable Folding Linen Hamper

Holds 18", 22" or 25" diameter bags (45.7 cm, 55.9 cm or 63.5 cm).

Features durable white powder-coat finish. Folds for compact storage.

Dimensions: 37" H x 20" x 20" D (93.9 cm x 50.8 cm x 50.8 cm).

Model 33395

Accessories

31331 - 18" Rope style

10 oz. cotton bag

31341 - 22"-25"

Rope style 10 oz. cotton bag



Tilt-Top Square Hamper

Open design for easy unloading. Step-on pedal for hands-free use. White powder-coat finish. Built-in bag holder supports heavy-duty bags. Dimensions: 36" H x 18.5" W x 19.5" D (91.4 cm x 47 cm x 49.5 cm).

Model 11410

Accessories

31331 - 18" Rope style

10 oz. cotton bag



Mobile Equipment Cart

Powder coated steel cabinet with integral handles, locking casters, & rubber bumpers to prevent wall damage. Has three small drawers & one large drawer.

Dimensions: 34.4" H x 24.2" W x 29" D (87.4 cm x 61.5 cm x 73.7 cm).

Model 63100

Accessories

100407 - Drawer dividers



Stainless Steel All Purpose Cart

Features non-corrosive stainless steel construction & three 15.5" W x 24" L (39.4 cm x 61 cm) shelves. Total weight capacity:

300 lbs (136 kg).

Dimensions with handle: 27" L x 16" W x 32" H (68.6 cm x 40.6 cm x 81.3 cm).

Model 63500



Support Products

More quality solutions for your care needs.



Step Stool

Features rugged, steel construction with durable, black powder-coat finish and a skid-resistant rubber mat for safety.

Dimensions: 9" H x 11.25" W x 14.25 L (22.8 cm x 28.6 cm x 36.2 cm). With handrail, total height is 35.25" (89.5 cm).

Weight capacity: 350 lbs (158 kg).

Models

11200-1 - 1 Stool per box
11200-2 - 2 Stools per box
11220 - w/Hand rail

Accessories

99121 - Replacement crutch tips
(set of 4)



Two-Step, Step Stool

Features heavy-duty, steel construction with durable, black powder-coat finish and a skid-resistant rubber mat for safety.

Dimensions (1st step): 9" H x 12" W x 16 L (22.9 cm x 30.5 cm x 40.6 cm).

Dimensions (2nd step): 7" H x 12" W x 16 L (17.8 cm x 30.5 cm x 40.6 cm). With handrail, total height is 44" (111.8 cm).

Weight capacity: 600 lbs (272 kg).

Models

31200 - Step stool
31220 - Step stool w/hand rail

Accessories

50016-1 - Hand rail



Bariatric Step Stool

Features heavy-duty, steel construction with durable, black powder-coat finish and a skid-resistant rubber mat for safety.

Dimensions: 9.25" H x 11.25" W x 14.25 L (23.5 cm x 28.6 cm x 36.2 cm). With handrail, total height is 34" (86.4 cm).

Weight capacity: 600 lbs (272 kg).

Models

21200 - Step stool
21220 - Step stool w/hand rail

Accessories

99121 - Replacement crutch tips
(set of 4)



Mobile Instrument Stand

Adjustable height from 29"-47.5" (73.6 cm-120.7 cm) for comfortable use sitting or standing. Removable stainless steel tray: 19.2" x 12.7" x 0.75" (48.8 cm x 32.3 cm x 1.9 cm).

Model 43465

Accessories

2102568 - Replacement tray



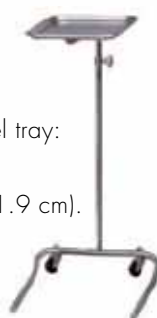
Stainless Steel Mayo Stand

Features non-corrosive stainless steel construction. Adjustable height from 31"-48.5" (78.7 cm-123.2 cm). Removable stainless steel tray: 19.2" x 12.7" x 0.75" (48.8 cm x 32.3 cm x 1.9 cm).

Model 48461

Accessories

2102568 - Replacement tray



Mayo Instrument Stand

U-shaped base minimizes interference during procedures. Adjustable height from 31"-48.5" (78.7 cm-123.2 cm). Removable stainless steel tray: 19.2" x 12.7" x 0.75" (48.8 cm x 32.3 cm x 1.9 cm).

Model 43460

Accessories

2102568 - Replacement tray



"U" Base Table

"U" base fits easily in restricted spaces. Offers convenient, spring-loaded height adjustment from 26.75"-43.25" (68 cm-109.9 cm). Top measures 15" x 30" (38.1 cm x 76.2 cm).

Models

11620 - w/Walnut grain laminate top & chrome base

11630 - w/Gray laminate top & gray epoxy finish on base



Mayo Instrument Stand

"California" style base for easy positioning. Adjustable height from 34"-52" (86.4 cm-132.1 cm). Removable stainless steel tray: 19.2" x 12.7" x 0.75" (48.8 cm x 32.3 cm x 1.9 cm).

Model 11100

Accessories

2102568 - Replacement tray



Kick Bucket w/Frame

Features non-corrosive stainless steel construction. Heavy-duty design includes 360° rubber bumper on frame 13 quart size (3.25 gallon).

Model 48711

48712 - Kick bucket only

48714 - Kick bucket frame only



Low "H" Base Table

Designed for low care beds. Features spring-loaded height adjustment. With casters: 19.5"-26.75" (49.5 cm-67.9 cm). With glides: 17.625"-24.5" (44.8 cm-62.2 cm). Top measures 15" x 30" (38.1 cm x 76.2 cm).

Model

11640 - w/Walnut grain laminate top & chrome base



"H" Base Table

Offers convenient, spring-loaded height adjustment from 26.75"-43.25" (67.9 cm-109.9 cm). Top measures 15" x 30" (38.1 cm x 76.2 cm).

Models

11600 - w/Gray laminate top & gray epoxy finish on base

11610 - w/Walnut grain laminate top & chrome base



Support Products

All support products are backed by a standard 5-year warranty.

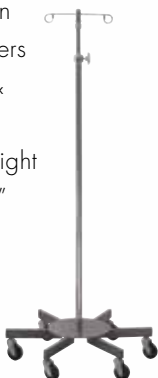
Large Infusion Pump Stand

Our 26" diameter (66 cm) design delivers the most stable base available, handling up to four infusion pumps and/ or IV controllers (w/ accessories 43433 & 43430). Exclusive "No Loss" knob allows easy height adjustment from 54"-96.5" (137.2 cm-245.1 cm).

Models

43408 - 2 Ram's
horn hook

43409 - 4 Ram's
horn hook



Heavy Base Four-Leg IV Pole

Features tough, four-leg epoxy-coated steel base with 22" (55.9 cm) diameter, wall-protecting rubber bumpers on the legs, and exclusive "No Loss" knob for easy height adjustment from 51.75"-93" (131.5 cm-236.2 cm).

Models

43403 - 2 Ram's
horn hook

43406 - 4 Ram's
horn hook



Short Wheel Infusion Pump Stand

Stable, space-saving design features heavy center weight with only a 16" diameter (40.6 cm) and exclusive "No Loss" knob for easy height adjustment from 54"-96.5" (137.2 cm-245.1 cm).

Models

43416 - 2 Ram's
horn hook

43417 - 4 Ram's
horn hook



Aluminum Base Five-Leg IV Pole

Includes five-leg cast aluminum base with 25" (63.5 cm) diameter, wall-protecting rubber bumpers on the legs, and exclusive "No Loss" knob for easy height adjustment from 52.25"-92.75" (132.7 cm-235.6 cm).

Models

11350 - 2 Ram's
horn hook

11360 - 4 Ram's
horn hook



Two-Hook Four-Leg IV Pole

Offers four-leg, epoxy-coated steel base with 22" (55.9 cm) diameter and easy, twist-lock height adjustment from 47"-92" (119.4 cm-233.6 cm).

Model

11300 - 2 Ram's
horn hook



Accessories for 43416, 43417, 43408, 43409

The following accessories all attach with the #43433 clamp, which is sold separately.

Universal Clamp

Offers fast, flexible attachment & positioning of accessories with set-screw locks.

Model 43433



Oxygen Cylinder Holder

Holds "D" & "E" size tanks. Ideal for ambulatory patients.

Model 43429



Infusion Pump Frame

Mount up to four pumps on a single stand. Easily mount, adjust and remove pump rack. Only for use with infusion pump stands #43408 and #43409.

Model 43430

*Two 43433 clamps needed.



Add-A-Tray

Removable stainless steel tray measures 9.75" x 13.5" x 0.75" (48.9 cm x 32.1 cm x 1.9 cm).

Model 43431





Model 45269

Model 35271

Model 25267

Large Round Steel Waste Can

32 Quart (8 Gallon) Models

45266 - White enamel finish

45267 - Red enamel finish

45268 - Beige
enamel finish

45269 - Stainless
steel finish



Square Steel Waste Can

32 Quart (8 Gallon) Models

35266 - White enamel finish

35267 - Red enamel finish

35268 - Beige enamel finish



20 Quart (5 Gallon) Models

35269 - White enamel finish

35270 - Red enamel finish

35271 - Beige enamel finish

Rectangular Plastic Waste Can

52 Quart (13 Gallon) Models

25266 - White plastic

25267 - Red plastic

25268 - Beige plastic



32 Quart (8 Gallon) Models

25269 - White plastic

25270 - Red plastic

25271 - Beige plastic

Upholstery Color Options

Standard upholstery color selections

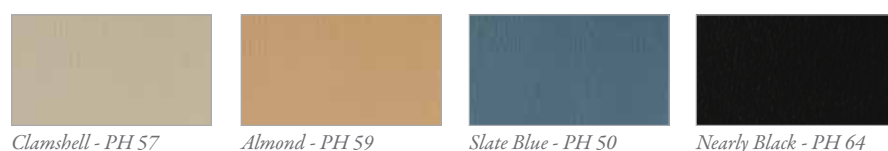
For Brewer Tables, Side Chairs, Blood Drawing Chairs and Exam Stools



California Technical Bulletin 133 Upholstery Color Selections (CAL-133)

For Brewer Tables, Century Series Stools and Value Plus Series Pneumatic Stools

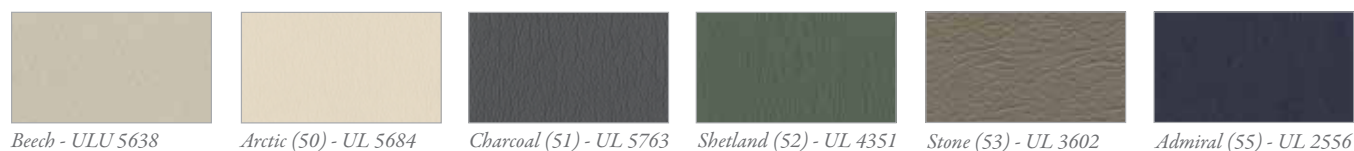
CAL TB 133 is a written legal standard outlining flammability test procedures for upholstered furniture. These vinyl color selections contain a flame blocking barrier that helps to prevent ignition, reflects heat and is flame retardant.



Standard upholstery color selections

For Brewer Tables, Side Chairs, Blood Drawing Chairs and Exam Stools

All Premium Plush Upholstery Colors are Ultrafabrics ULTRALEATHER™.

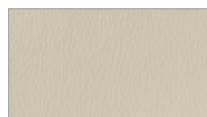


Note: Tables featuring a plush upholstery top are two-toned, stitched, with Stucco and one of the premium plush upholstery colors. Exam stools and side chairs are one solid color, stitched. (-UL)

Colors may vary slightly depending on printing setting. For actual material swatches call 1•888•Brewer•1

Additional standard upholstery color selections

For Brewer Exam Stools only



*Alabaster - US 396
Vacuum Upholstery -
AVS9051*



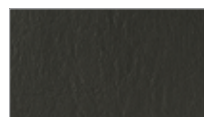
*Dove - US 413
Vacuum Upholstery -
AVS9053*



Greystone - US 425



*Gunmetal - US 392
Vacuum Upholstery -
DAV 016*



Graphite - SF 73



Black - HAM 114



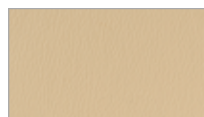
Clamshell - PR 57



Mushroom - LV 017



Putty - US 403



Sand - US 384



Buckskin - RU 840



Chocolate - HAM 122



*Claret - US 357
Vacuum Upholstery -
AVS2083*



Port - NEO 62



Burgundy - US 364



Black Plum - CG 3767



Blue Fog - PR 46



Agate Blue - LV 003



Azure Blue - SR 106



*Slate Blue - NEO 26
Vacuum Upholstery -
AVS 1446*



Wedgewood - MS 68



*Royal - US 354
Vacuum Upholstery -
AVS9050*



Teal - LV 001



*Black - US 393
Vacuum Upholstery -
DAV 013*



*Sage - HAM 105
Vacuum Upholstery -
DAV 004*



Forest Green - HAM 124



Emerald - NEO 40

Colors may vary slightly depending on printing setting. For actual material swatches call 1•888•Brewer•1



Access® High-Low Exam Table FLEX™ Exam Table Assist Power Procedure Table® Access® Exam Table

Our process-oriented solutions are designed to help you improve operational efficiencies while more effectively protecting patients, staff and your practice. From exclusive safety advances for confident transfers to features like our large, signature pass-through drawers and work surfaces. Brewer helps you meet the challenges of today's healthcare reality.

What's more, our tables and stools are proudly made in the USA. Our extensive line of solutions is manufactured to Brewer's rigorous quality standards and backed by best-in-class standard warranties. It's all part of our commitment to provide you with The Power to Advance. Safely. Financially. Competitively.

For more information about the many ways we deliver The Power to Advance, contact your Brewer representative today.

Brewer

The Brewer Company, LLC
N88 W13901 Main Street, Suite 100
Menomonee Falls, WI 53051

1.888.273.9371
www.brewercompany.com

