



ZenFlex™

NiTi Rotary Shaping File

Maximum Strength. Minimally Invasive.

Featuring an ideal balance of strength and flexibility, ZenFlex lets you reach the full working length with reduced risk of breakage while preserving more tooth integrity.



High Cutting Efficiency

Designed with triangular cross section with proprietary heat treatment, ZenFlex exhibits high cutting efficiency that lets you reach the full working length of even complex root geometries.



Minimally Invasive

A maximum flute diameter of 1mm and a non-cutting tip work together to minimize transportation and preserve the tooth's structural integrity.



Exceptional Strength

Resists torsional stress and cyclic fatigue resulting in minimal breakage and reduced transportation.



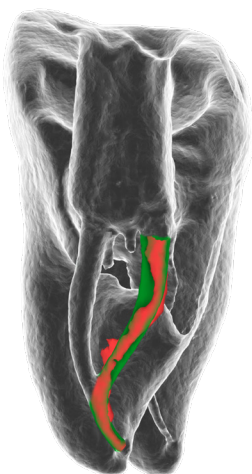
Excellent Flexibility

Proprietary heat-treatment design delivers excellent controlled memory and flexibility for up to 90° curves.

Follow the curvature. See the difference.

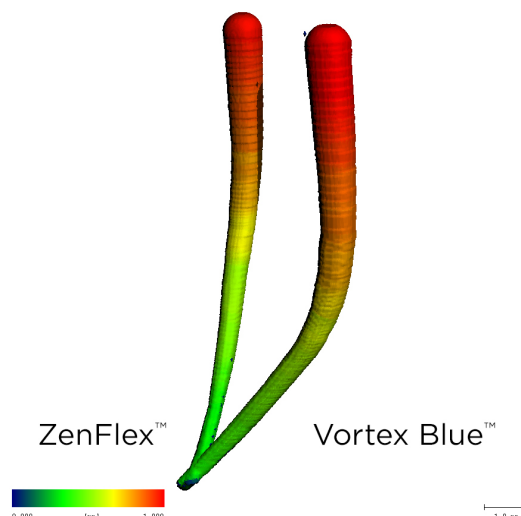
We invited leading endodontist Dr. Stephen L. Buchanan to put ZenFlex to the test. Dr. Buchanan found that ZenFlex is able to shape severely curved canals.

He also found that ZenFlex is able to maintain more tooth structure after RCT, due to its 1mm maximum flute diameter.



Pre-Op Canal Shaped Canal

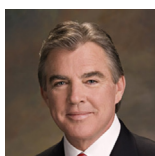
*CT scans taken from extracted teeth.



ZenFlex from the professionals' perspective.

“

ZenFlex shaping instruments have variable-pitch flute angles that prevent them from threading into canals, provide them with enormous chip space between flutes, and help prevent tip breakage. These sophisticated instruments deliver single-file shapes without transporting canals due to their variable-heat treatment. Customizing heat treatment for each file size produces smaller files with more shape memory to prevent unwinding and larger files with remarkable ductility. It also has a 1mm maximum flute diameter in order to better maintain the structural integrity of teeth after RCT, and Kerr's AutoFit gutta percha points fit well to the ends of canal shapes cut by ZenFlex Files.”



- Dr. Stephen L. Buchanan

“

The ZenFlex Rotary Files cuts smoothly and efficiently reaching working length in reduced time.”



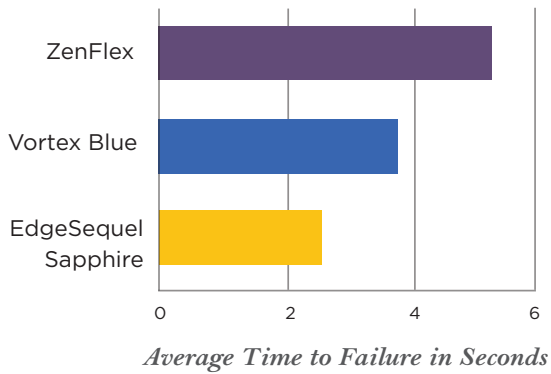
- Dr. Bernice Ko

“

I really like the control memory of ZenFlex. It's one of my favorite features about the file. I have had three cases recently where I wish I could have used the ZenFlex file on because of the severe “S” shaped curvatures of the roots.”



- Dr. Matthew Miller

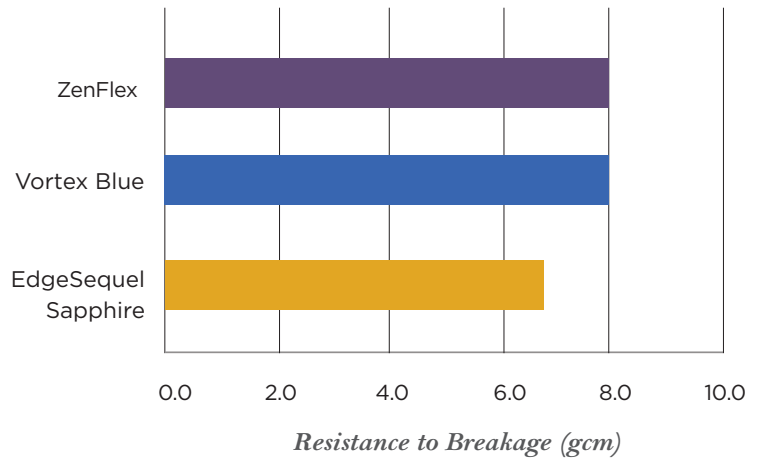


When failure is not an option.

Compared to other brands, ZenFlex delivers greater resistance to cyclic fatigue. This results in longer time to failure and shorter time to reach the working length while minimizing the risk of breakage and transportation.

Torque Strength.

ZenFlex is designed to be as resistant or more resistant to torsional stresses relative to major rotary file competitors despite having a 20% smaller maximum flute diameter and smaller mass.



Flexibility Meets Memory.

Every canal anatomy is different, and some are more complex than others. Designed with proprietary heat-treatment technology, ZenFlex provides excellent flexibility for up to 90° curves.

With exceptional controlled memory, ZenFlex maintains its pre-curved shape, resulting in easier insertion into even the most challenging canal anatomies.

ZenFlex adapts to *your* needs.

With a wide selection of tip and taper configurations, ZenFlex meets the needs of endodontic specialists.

Ordering Information

PACK OF 6

0.04 TAPER			0.06 TAPER		
Tip	Length (mm)	Part Number	Tip	Length (mm)	Part Number
.20	21	818-1201	.20	21	818-2201
	25	818-1202		25	818-2202
	31	818-1203		31	818-2203
.25	21	818-1251	.25	21	818-2251
	25	818-1252		25	818-2252
	31	818-1253		31	818-2253
.30	21	818-1301	.30	21	818-2301
	25	818-1302		25	818-2302
	31	818-1303		31	818-2303
.35	21	818-1351	.35	21	818-2351
	25	818-1352		25	818-2352
	31	818-1353		31	818-2353
.40	21	818-1401	.40	21	818-2401
	25	818-1402		25	818-2402
	31	818-1403		31	818-2403
.45	21	818-1451	.45	21	818-2451
	25	818-1452		25	818-2452
	31	818-1453		31	818-2453
.50	21	818-1501	.50	21	818-2501
	25	818-1502		25	818-2502
	31	818-1503		31	818-2503
.55	21	818-1551	.55	21	818-2551
	25	818-1552		25	818-2552
	31	818-1553		31	818-2553

ASSORTED PACK

0.04 TAPER

LENGTH 21 MM | PART # 818-0421

LENGTH 25 MM | PART # 818-0425

TIP SIZE

.20 **.25** **.30** **.35** **.40** **.45**

0.06 TAPER

LENGTH 21 MM | PART # 818-0621

LENGTH 25 MM | PART # 818-0625

.20 **.25** **.30** **.35** **.40** **.45**



Recommended Gutta Percha:

.04 Taper - 952-0011, Gutta Percha Medium Fine

.06 Taper - 972-0102, Auto Fit Greater Taper .06 Gutta Percha

For added flexibility and control, ZenFlex works with your preferred endo motor and 8:1 handpieces.

Kerr Internal Data. Available upon request. ZenFlex is a trademark of Kerr Corporation. All other trademarks are properties of their respective owners.