

Posey® Alarm Locking Bracket

Application Instructions



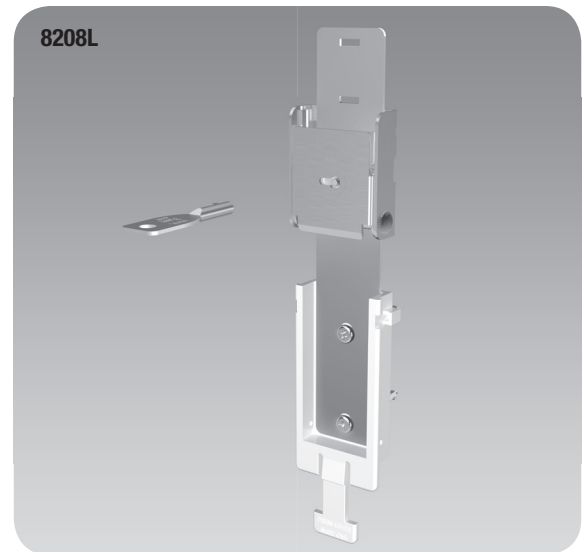
DESCRIPTION OF PRODUCT: The 8208L is designed to mount to a flat wall surface only.

Indications for Use:

⚠ WARNING Use of the 8208L may impede access to on/off switch of alarm.

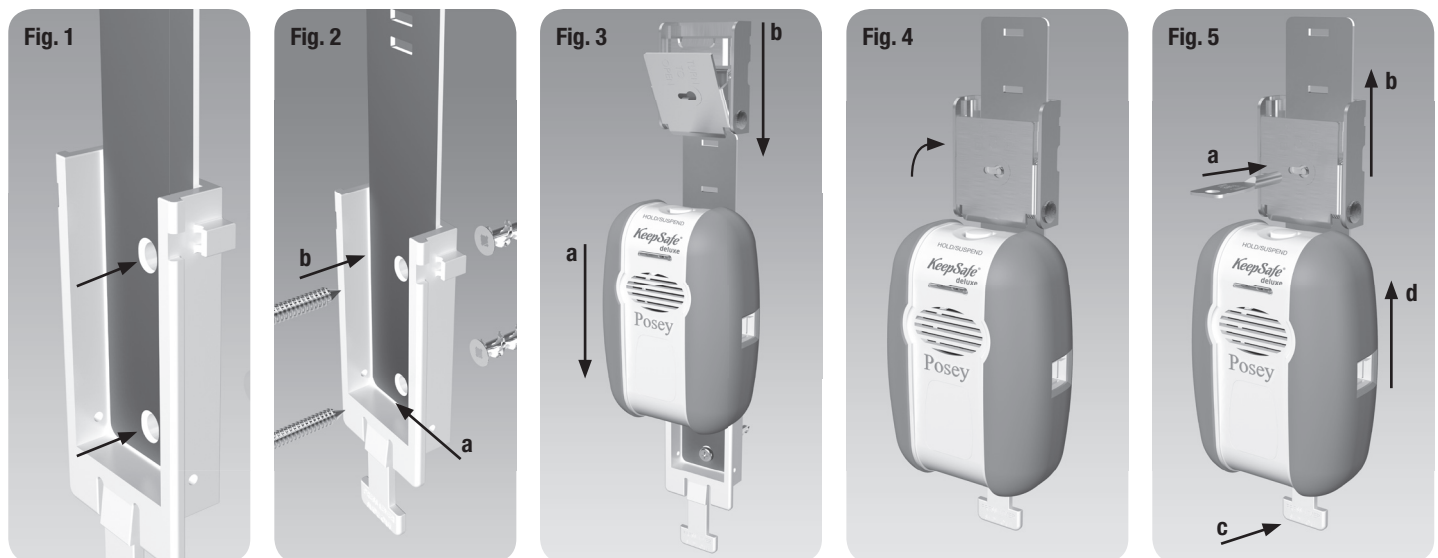
Application Instructions:

1. Choose a wall location out of the patient's reach, where the alarm's indicator lights will be in clear view of staff.
2. Screw attachment:
 - Position wall bracket with back (flat side) against wall
 - Using bracket as a template, mark spots to insert the screw anchors into the wall. (Fig. 1)
 - ⚠ WARNING** Make sure it is safe to drill and there are no pipes or electrical wires that could be damaged.
 - ⚠ WARNING** If using your own mounting hardware, use a screw with a head diameter (or washer) large enough to secure wall bracket/Narrow Vertical Slide to wall.
3. Drill holes where marked and install anchors.
4. Place the Narrow Vertical Slide into the Wall Bracket so that the bottom of the Slide is flush against the bottom wall of the bracket. (Fig. 2a)
5. Position Narrow Vertical Slide and Wall Bracket assembly over wall anchor holes; insert and tighten screws. (Fig. 2b)
6. Slide alarm onto bracket from top down until it is firmly in place. (Fig. 3a)
7. Slide buckle lock on Narrow Vertical Slide, to top of alarm. (Fig. 3b)
8. Lock buckle by pressing buckle lock to engage the slot in Narrow Vertical Slide. (Fig. 4)
9. To remove alarm, first unlock and remove buckle lock. (Fig 5a-b) Then gently push bracket release lever IN (Fig 5c) while sliding alarm up and out. (Fig 5d)
10. Replace buckle lock and lock onto Narrow Vertical Slide when not in use.



Posey Alarm Locking Bracket

REF 8208L



Posey Company • 5635 Peck Road, Arcadia, CA 91006-0020 USA
Phone: 1.800.447.6739 • 1.626.443.3143 • Fax: 1.800.767.3933 • www.posey.com