

3.11"  
This panel visible when folded

3.11"  
This panel visible when folded

3.11"

## Alarm Attachment Bracket 8269 Application Instructions



The 8269 Alarm Attachment Bracket is suitable for bed and chair/wheelchair mounting.

### TO MOUNT THE 8269 ALARM ATTACHMENT BRACKET:

1. Choose location on headboards or footboard where there is an opening and the strap can be attached so that the patient cannot reach or tamper with the alarm or connections.
2. Buckle strap onto bed (Fig. 1) and tighten strap securely.
3. Slide alarm onto bracket from top down until it is firmly in place (Fig. 2). Make sure alarm indicator lights are in clear view of staff.
4. To remove alarm, gently push release lever IN while sliding alarm up and out (Fig. 3).

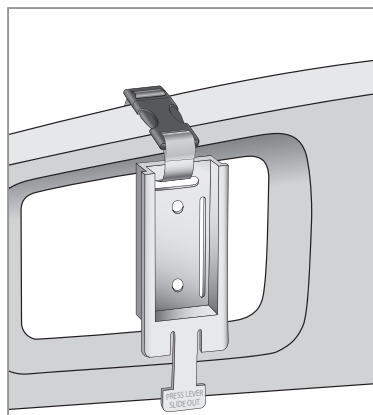


Fig. 1

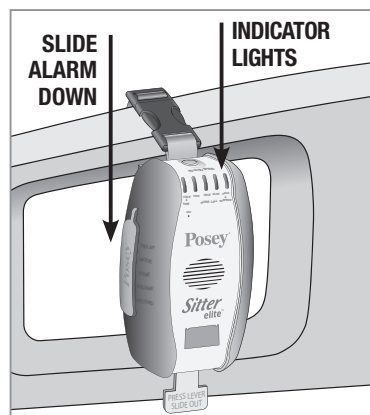


Fig. 2

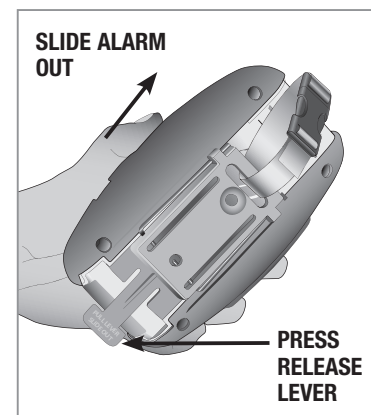


Fig. 3



Posey Products, LLC (Posey) • 5635 Peck Road, Arcadia, CA 91006-0020 USA  
Phone: 1.800.447.6739 • Fax: 1.800.767.3933 • [www.posey.com](http://www.posey.com)

© 2019 Posey Products, LLC. (Posey) All rights reserved.



M7001 REV A 030119

Printer: please note dashed fold lines. The upper left and upper middle sections should be visible when document is fully folded.  
Folded size will be ~3.11 x 3.375