



ENDO ESSENTIALS

ENDODONTIC PRODUCT CATALOG

How the best perform





SOLUTIONS OVERVIEW



Since 1908 Hu-Friedy has been putting the highest quality, innovative dental products in the hands of dental professionals worldwide. And today as one of the world's leading dental instrument companies, we continue our commitment to advancing dental performance by supporting these products with world class service, support, education and peer communities. We're committed to making sure the best perform that way.

Hu-Friedy. How the best perform.

A Worldwide Focus on Quality

Hu-Friedy is based in Chicago and has been privately owned by the Saslow family since 1959. Today we employ over 600 talented and committed employees in 11 countries – including our production facilities in Chicago and Shanghai, China; our distribution center in Tuttlingen, Germany; and our additional offices in Japan, Germany and Italy. Worldwide, our products are sold in more than 95 countries.

Our mandate for excellence is company-wide. Only at Hu-Friedy will you find more than 300 artisans meticulously handcrafting instruments

in a modern manufacturing facility. Only here are employees personally responsible for the quality of their work and each other's. We believe that our success is the result of both our company's commitment to excellence and the dedication and pride of our highly skilled instrument craftspeople, management and staff.

A Legacy of Innovation

Since the Hu-Friedy Manufacturing Company was founded in 1908 by Hugo Friedman, we have proudly collaborated with private practitioners, dental schools and leading educators to develop

new technologies, innovative designs and quality products that are synonymous with value and performance. Because of our reputation for industry leadership, dental experts have been turning to Hu-Friedy with their cutting-edge ideas for over a hundred years.

From our inception, we have been committed to education and developing relationships with students. At the core is our commitment to helping our customers perform at their best and to improve lives through better dentistry. From student to practitioner, Hu-Friedy is proud to be an important part of our customers' professional lives.

How the best perform





HU-FRIEDY'S ENDODONTIC INSTRUMENTATION

Hu-Friedy's comprehensive line of endodontic instruments and accessories give you versatile options to meet all of your clinical needs. Many of our instruments, especially those made for microsurgical applications, were developed in conjunction with leading global Key Opinion Leaders who are on the cutting-edge of clinical research, design and application. If you are looking for exceptional instrument design, quality and reliability, and unmatched customer service, choose Hu-Friedy's Endodontic Instruments.

The Challenge

The sensitive nature of endodontic procedures necessitates instruments with exceptional response, integrity and durability to accommodate a wide variety of endodontic procedures – from routine root canals to complex microsurgery.

The Solution

Hu-Friedy instruments are individually handcrafted to precise specifications from quality materials to ensure superior performance, longevity and reliability. Instrument design combined with proprietary materials and incomparable workmanship result in instruments with unique balance, working leverage and control. They function as a seamless extension of the practitioner's skill.

The Result

High-quality Hu-Friedy instrumentation provides unsurpassed clinical efficiency, so practitioners can deliver superior outcomes and focus on the patient. The result is outstanding patient care.

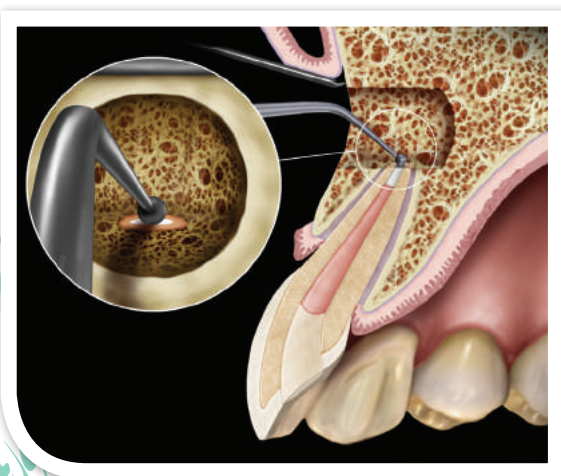
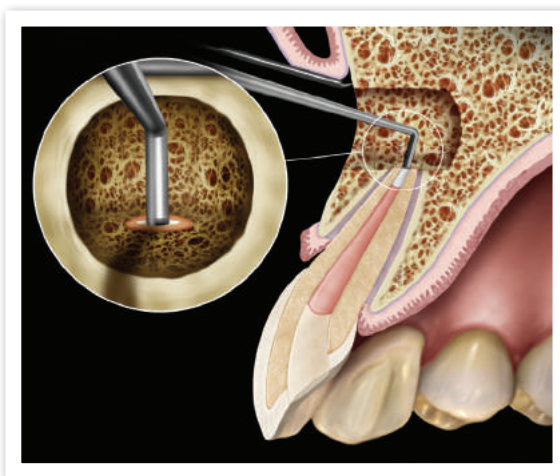
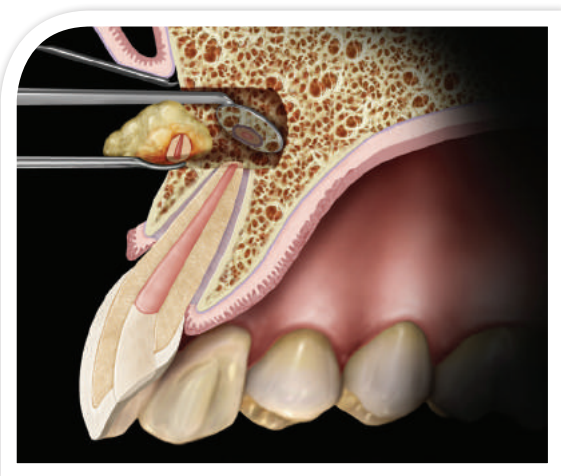
TABLE OF CONTENTS

| | |
|-------------------------------------|----|
| Endodontic Introduction | 3 |
| Endodontic Microsurgery | 4 |
| Explorers | 14 |
| Excavators | 15 |
| Endodontic Accessories | 16 |
| Spreaders | 17 |
| Pluggers | 20 |
| Rubber Dam Clamps | 23 |
| RDC Accessories | 27 |
| Instrument Management System (IMS®) | 29 |
| Key Opinion Leader Kit Lists | 33 |



ENDODONTIC MICROSURGERY

Hu-Friedy has an extensive line of apical hand instruments. This includes curettes, explorers, condensers, burnishers and mirrors. Many were developed in conjunction with Hu-Friedy Key Opinion Leader, Professor Marwan Abou-Rass and other leading global innovators.



Mirrors



Curettes/
Excavators



Explorers



Filling
Instruments



Condensers/
Pluggers



Combo Plugger/
Burnisher



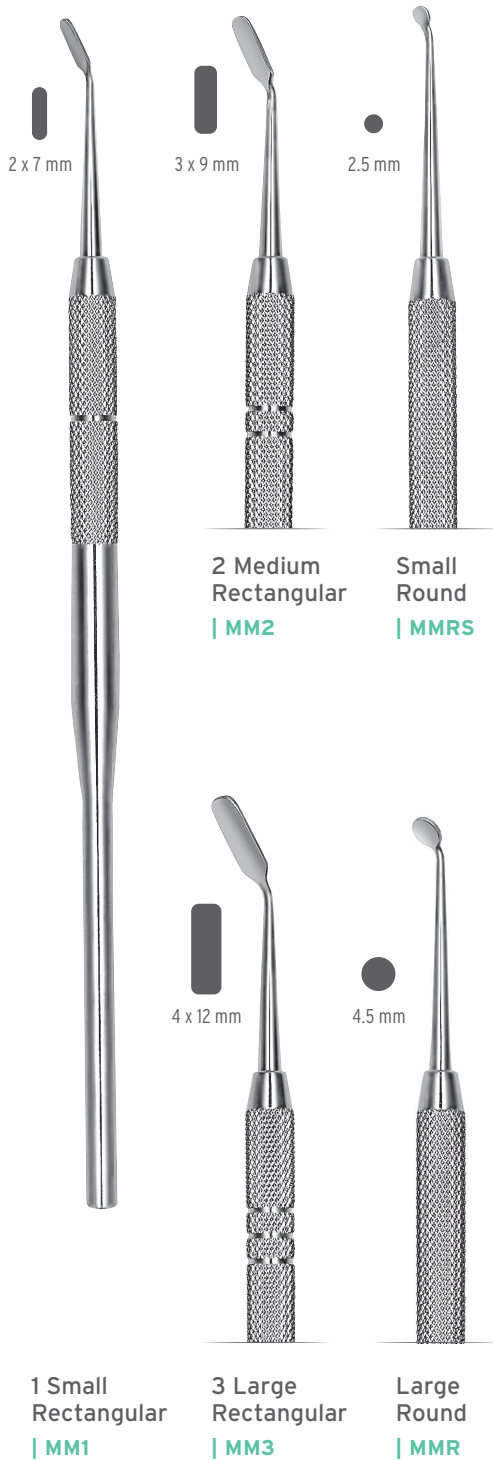
Retractors



MICROSURGICAL MIRRORS

Hu-Friedy has a large assortment of microsurgical mirrors to choose from. They are made from highly polished stainless steel, come in round or rectangular shapes, are single or double-ended, and are offered in a variety of sizes. Select from single instruments or choose the mirror you want and team it up with a handle of your choice. The rhodium-coated front surface mirrors offer sharp, scratch- and distortion-free visibility.

FRONT SURFACE RHODIUM-COATED

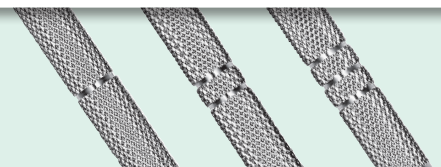


VELVART



*Handle sold separately. MBW wrench required for assembly.

Handles of the MM1, MM2 and MM3 are marked with one, two or three bands for easy identification.





MICROSURGICAL ABOU-RASS CURETTES/EXCAVATORS

Curettes in straight and angled forms, and useful sizes. Straight curettes provide controlled straight line access and good visibility; use angled forms to access difficult or confined areas.

STRAIGHT



1.5 mm

1 Abou-Rass Apical
| MAR-SC1



2.5 mm

2 Abou-Rass Apical
| MAR-SC2



3 mm

3 Abou-Rass Apical
| MAR-SC3



4 mm

4 Abou-Rass Apical
| MAR-SC4

ANGLED



1 mm

1 Abou-Rass
| MAR-C1



2 mm

2 Abou-Rass
| MAR-C2



3.2 mm

3 Abou-Rass
| MAR-C3



4 mm

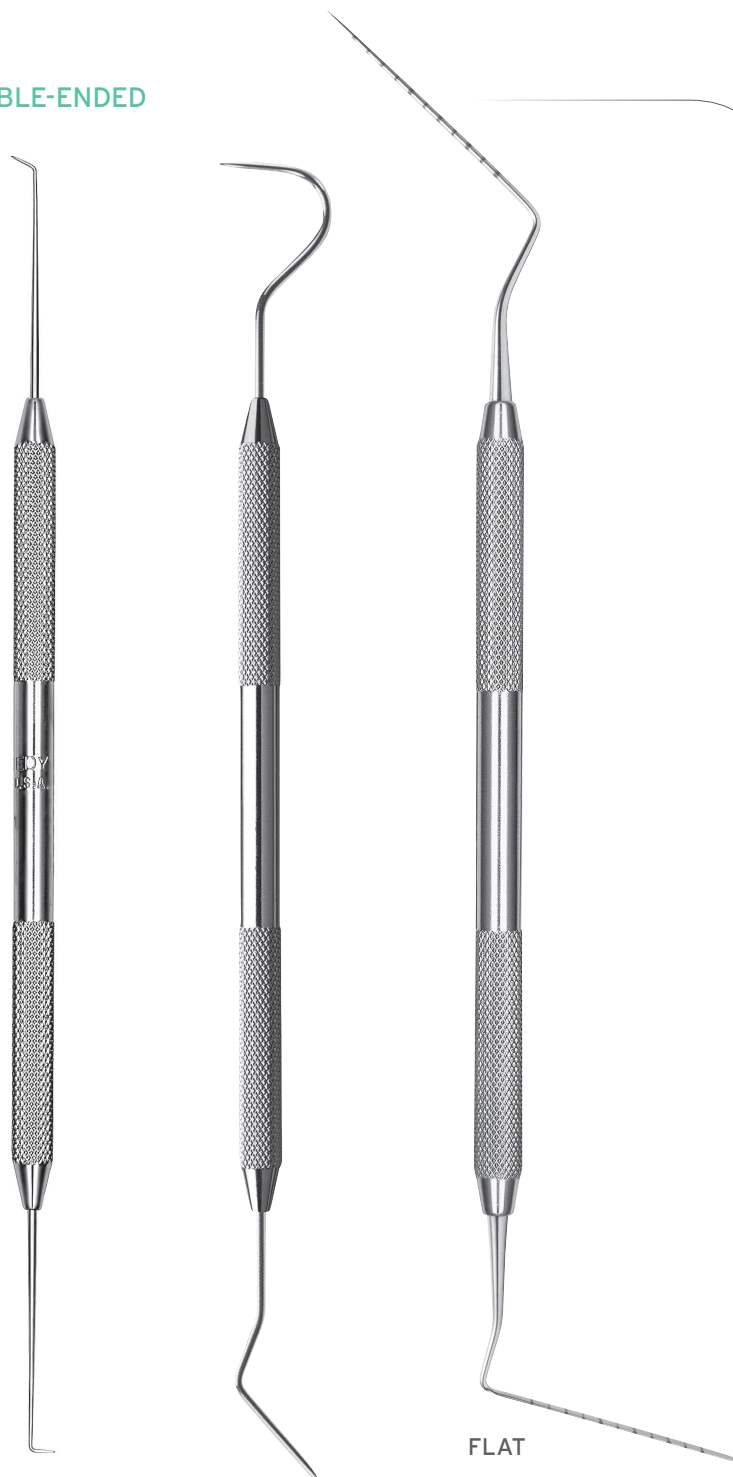
4 Abou-Rass
| MAR-C4

*The terms "Curettes" and "Excavators" are interchangeable.



Hu-Friedy's large selection of microsurgical explorers are available in various designs and working ends, giving the clinician useful options for exploration and treatment. From the basic and popular MEX1, to Professor Abou-Rass' excellent assortment of explorers, they all provide the balance, fine design and construction that practitioners need for careful yet thorough apical exploration.

DOUBLE-ENDED



Explorer
| MEX1

A popular, basic apical explorer used to initiate the tracking groove in the root tip, and for general exploration and probing.

1 Abou-Rass
| MAR-EX1

A versatile explorer with two different, useful and sharp working ends.

3 Abou-Rass
| MAR-EX3

A probe with one blunt flat and one round end; excellent for taking measurements, especially the direct root length of the apex.

SINGLE-ENDED



2 Abou-Rass
| MAR-EX2

A single-ended bone file styled explorer used to enlarge the opening made by MAR-EX1 into the cortical bone to allow drainage.

4 Abou-Rass
| MAR-EX4

Its straight, sharp working end is ideal for penetrating small osseous defects in cortical bone.



5 Abou-Rass
| MAR-EX5

A 45° angled explorer used to check dentinal defects, such as root caries, root resorption and fracture lines.

6 Abou-Rass
| MAR-EX6

A 90° angled, sharp-pointed explorer useful for detecting apical foramen and apical seal quality.



MICROSURGICAL FILLING INSTRUMENTS & PLUGGERS

RETROFILLING

Hu-Friedy has several double-ended apical filling instruments to choose from, including the recently launched filling instrument developed in conjunction with Dr. Bertrand Khayat, a Hu-Friedy Key Opinion Leader.



Khayat

| PF18ABK6

This versatile Khayat filling instrument has one angled and one straight spatula end. Useful for complex, deep apical treatments.



Left Apical

| MRFL

The left of two paired instruments that are used for filling, condensing and burnishing.



Right Apical

| MRFR

The right of two paired instruments that are used for filling, condensing and burnishing.

PLUGGERS

These pluggers give the clinician very different working ends for enhanced maneuvering and versatility.



1

| PLGRF1



2

| PLGRF2

The Khayat and Velvart pluggers are useful for deep canal condensation, and can be used together for this purpose. Designed in conjunction with Dr. Bertrand Khayat and Dr. Peter Velvart.



Khayat

| PLGBK6



Velvart

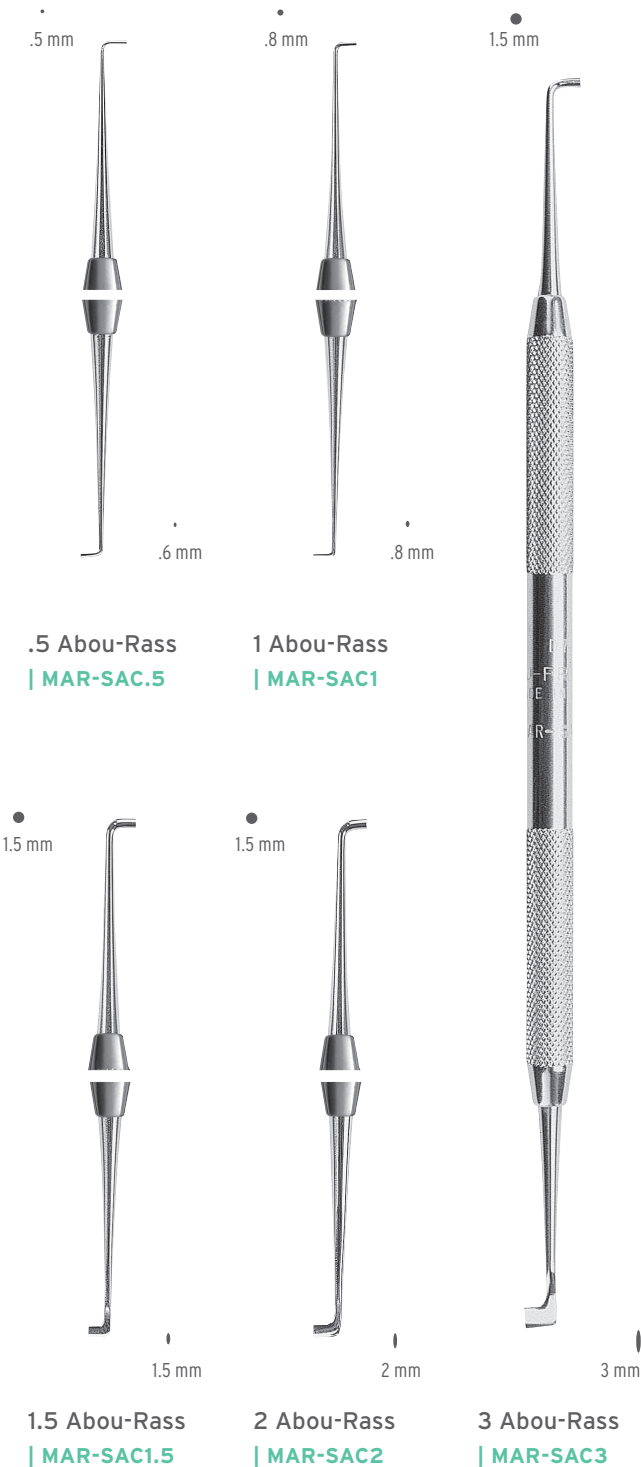
| PLGVEL56

MICROSURGICAL ABOU-RASS CONDENSERS/PLUGGERS



Designed in conjunction with Professor Abou-Rass, these double-ended instruments are perfect for retrofill applications. They are double-ended with one round and one oval tip. Round working tips produce “pot hole” preparations while oval tips make “isthmus” designs.

STRAIGHT



ANGLED

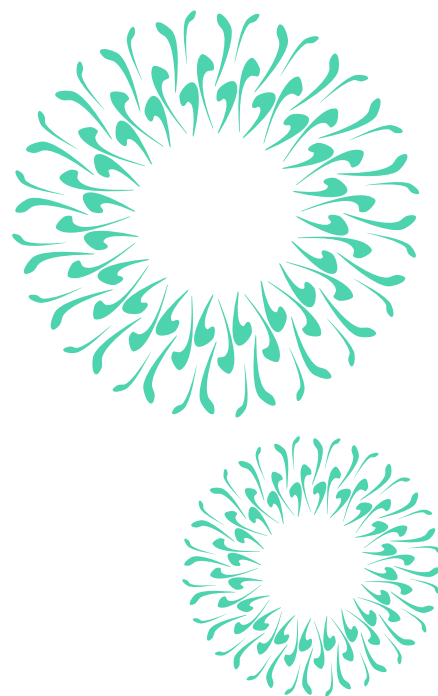
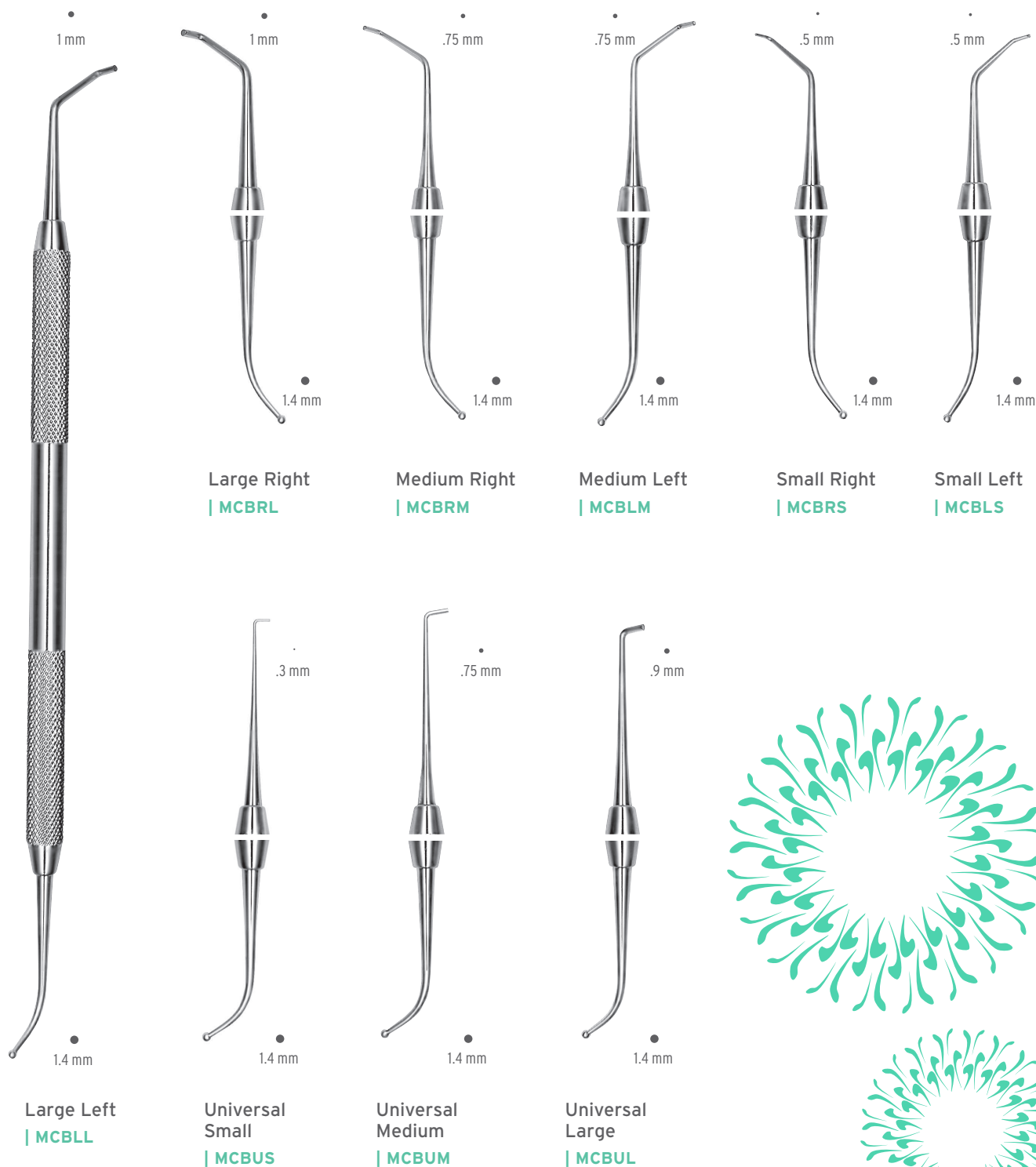


*The terms “Condensers” and “Pluggers” are interchangeable.



MICROSURGICAL CONDENSERS/BURNISHERS

These versatile double-ended instruments combine a condenser on one end and a ball burnisher on the other end. The plugger ends feature universal, right and left designs and come in small, medium and large sizes.



This family of ball burnishers is available in straight and angled forms. Straight designs provide direct, straight access with ease and visibility. The angled forms have long shanks for optimal reach and visibility of the working end.

MICROSURGICAL
ABOU-RASS BURNISHERS



STRAIGHT



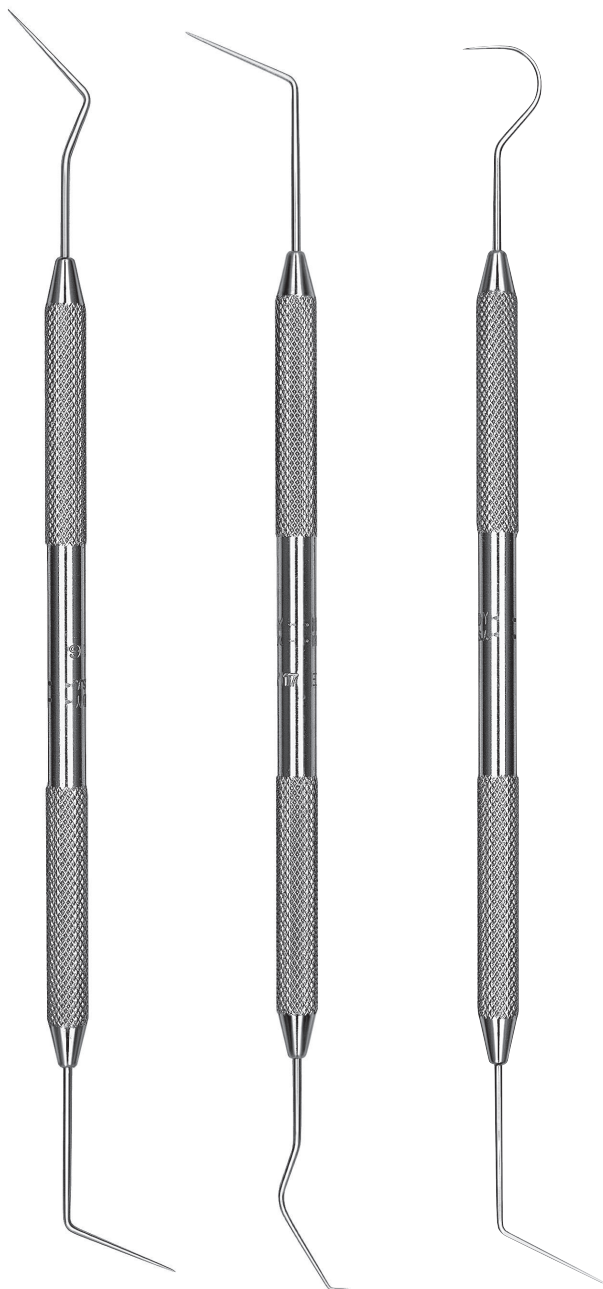
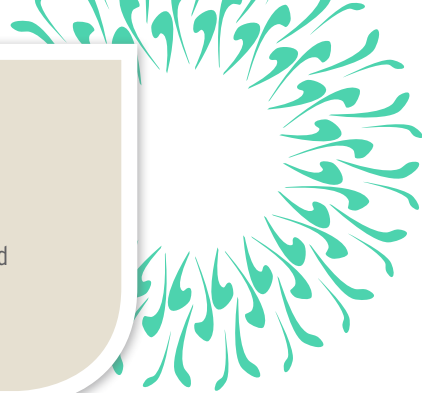
ANGLED





EXPLORERS

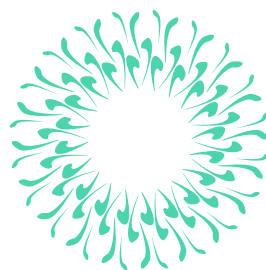
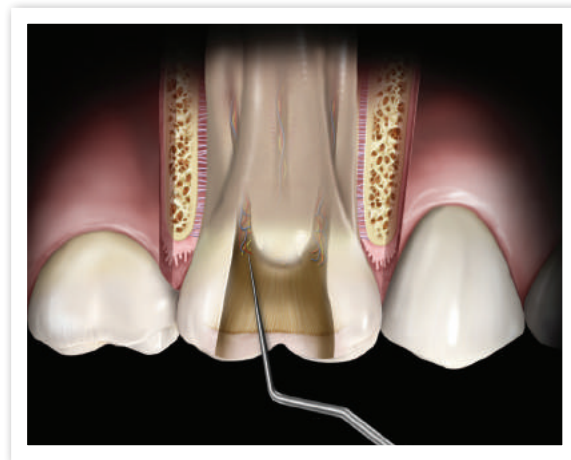
Hu-Friedy's endodontic explorers are made from a special blend of alloy which provides the flexibility, strength, tactile sensitivity and resilience clinicians need when exploring and assessing the treatment site. They are available in several double-ended designs and handles.

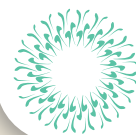


DG16
| EXDG16
Handle options: #6, #7, #31
| EXDG16T

DG16/17
| EXDG16/17
Handle: #31

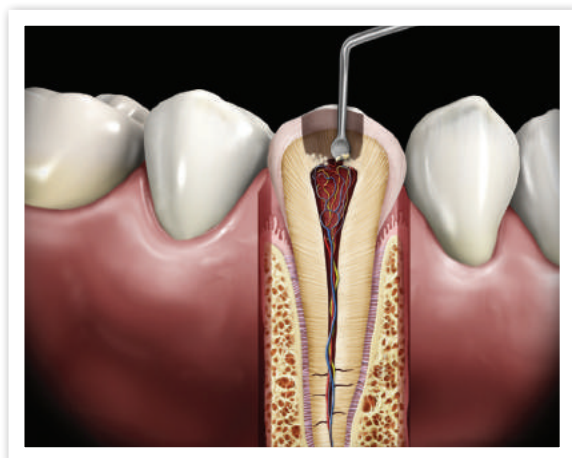
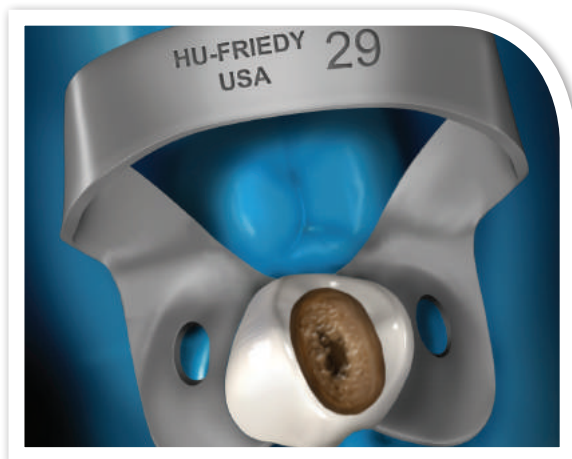
DG16/23
| EXDG16/23
Handle: #31





EXCAVATORS

Hu-Friedy's endodontic excavators feature extended-length shanks and are meticulously handcrafted from the highest grade stainless steel. They help the clinician access the pulp chamber for easy and efficient removal of dentin. The result is a superior clinical outcome and improved efficiency.



2 Glick
| EXCGL2

31L
| EXC31L
Handle options:
#6, #41

31W
Oval Spoon
| EXC31W
Handle options:
#6, #41

32L
| EXC32L
Handle options:
#6, #41

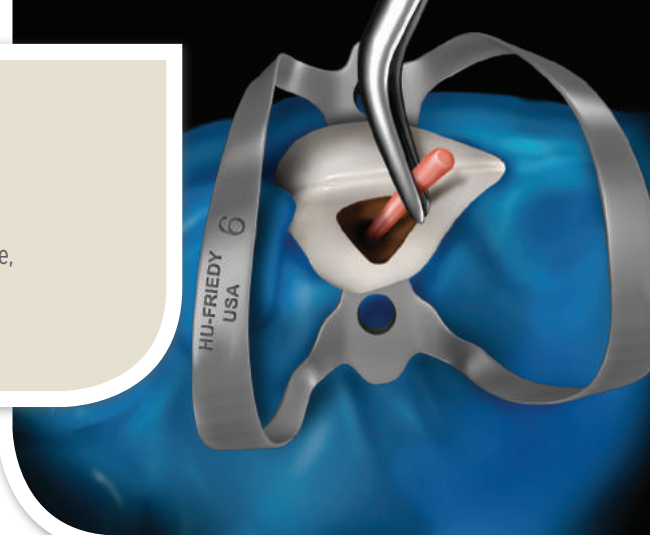
33L
| EXC33L
Handle options:
#6, #41





ENDODONTIC ACCESSORIES

In addition to critical procedural instruments such as spreaders, pluggers and rubber dam clamps, endodontic accessories, the "staples" of the office, are available to complete the line-up of Endo Essentials.



POST & SILVER POINT REMOVAL FORCEPS



Steiglitz Straight
5-1/2" (14 cm)*

| RFSTR



Steiglitz (Archer) 45°
5-1/4" (13-1/2 cm)*

| RF45



Steiglitz 90°
4-3/4" (12 cm)*

| RF90



Peet 45°
4-3/4" (12 cm)*

| RFP



1 Mirror Handle

| MH6692K

With millimeter
scale.



6" Stainless
Steel Ruler

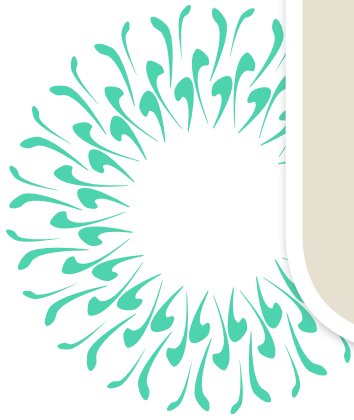
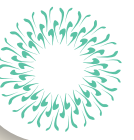
| CLR6



6-1/2"
(16-1/2 cm)
Locking
Pliers

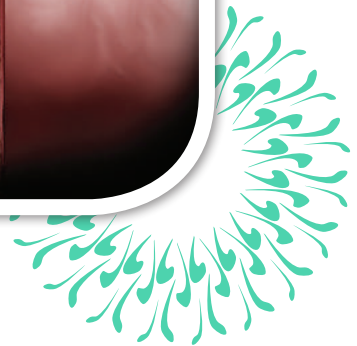
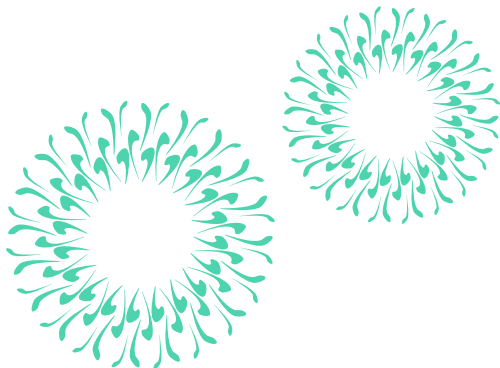
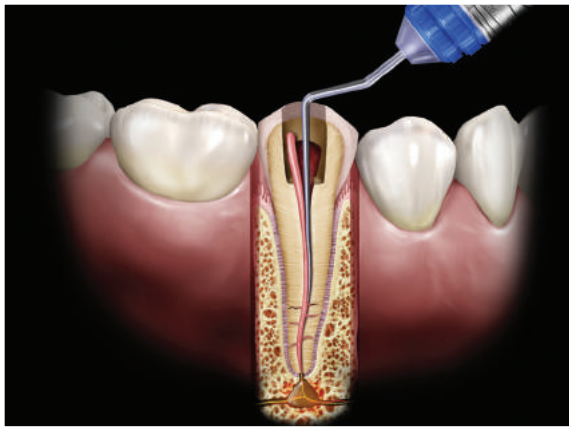
| EPL1

*Pictured at 50%.



SPREADERS

Hu-Friedy manufactures a wide variety of spreaders, all handcrafted from the finest stainless steel to precise specifications. Choose from NiTi spreaders, ISO sized spreaders with color coded handles for easy identification, heat carriers, and a variety of other popular spreaders. Our spreaders help the clinician gain access into the most difficult canals for optimal compaction of filling material during lateral condensation.





SPREADERS*

ISO SIZED SPREADERS*

ISO sized spreaders are color-coded for identification and convenience.

.25 mm



GP1
20 mm
| RCSGP1

.30 mm



1S Wakai
22 mm
| RCSW1S

.40 mm



2S Wakai
22 mm
| RCSW2S

.30 mm



ISO Size 30
24 mm
| RCS30

.40 mm



ISO Size 40
24 mm
| RCS40

.40 mm



D11 Standard
23 mm
| RCSD11

.35 mm



D11S Thin
23 mm
| RCSD11S

.23 mm



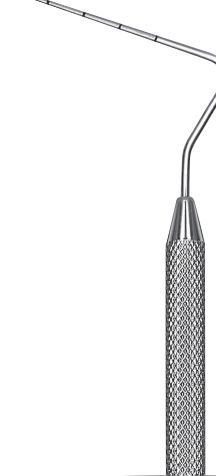
D11T Thinner
22 mm
| RCSD11T

.20 mm



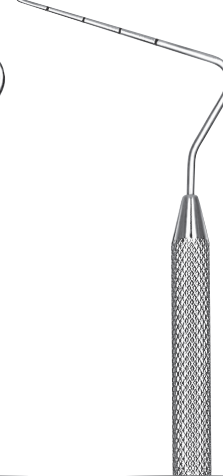
D11TS Thinnest
21 mm
| RCSD11TS

.50 mm



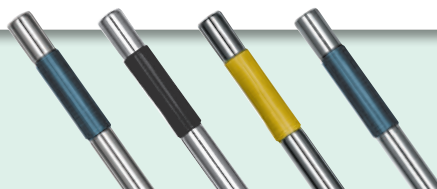
ISO Size 50
28 mm
| RCS50

.60 mm



ISO Size 60
28 mm
| RCS60

ISO Spreaders have an ISO color-coded band on the handle for ease of identification during usage: #30-Blue, #40-Black, #50-Yellow, #60-Blue

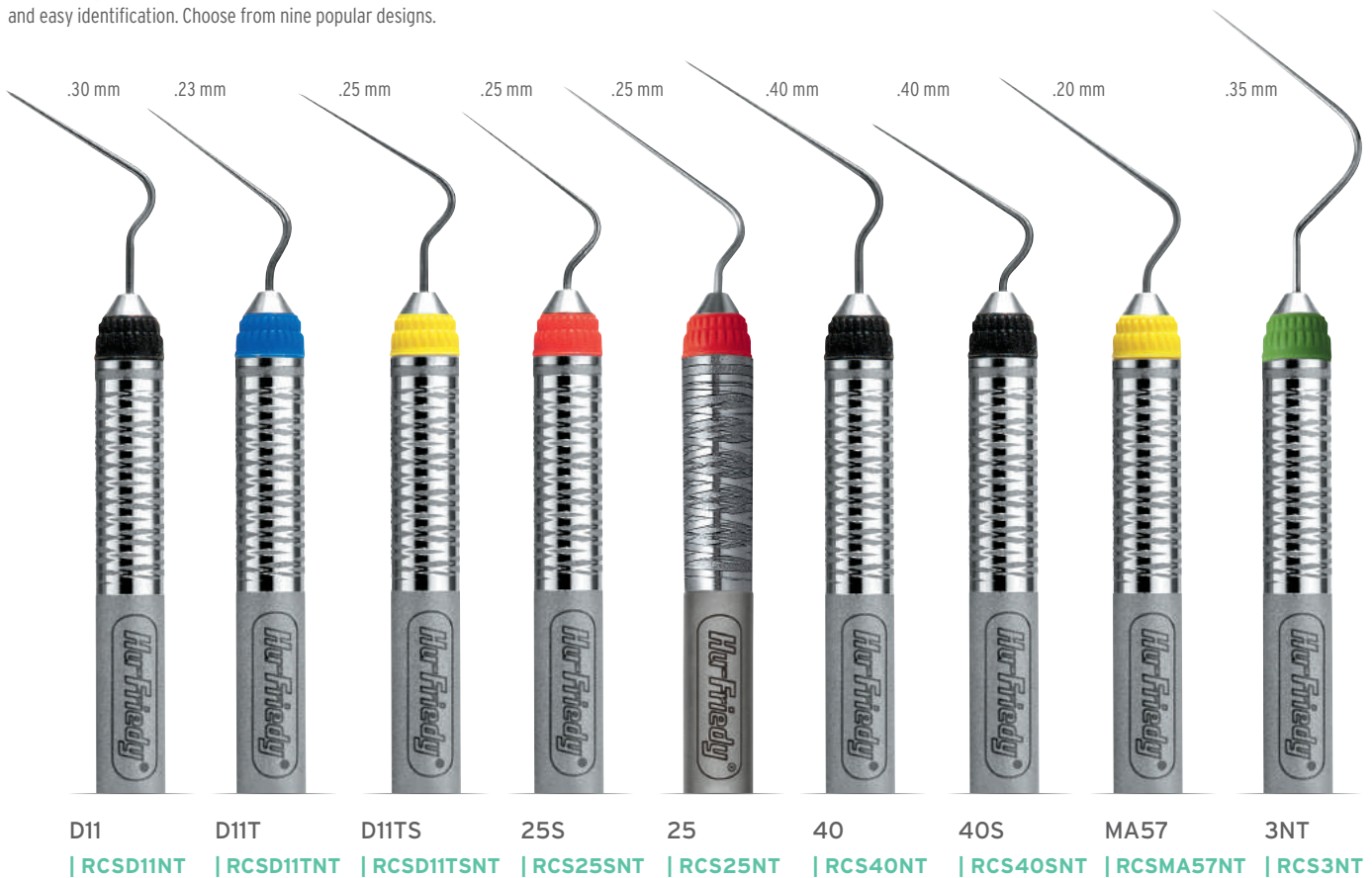


*D1=Diameter of instrument 1 mm from the tip. These measurements (i.e., .30) appear next to the tips of the instruments.

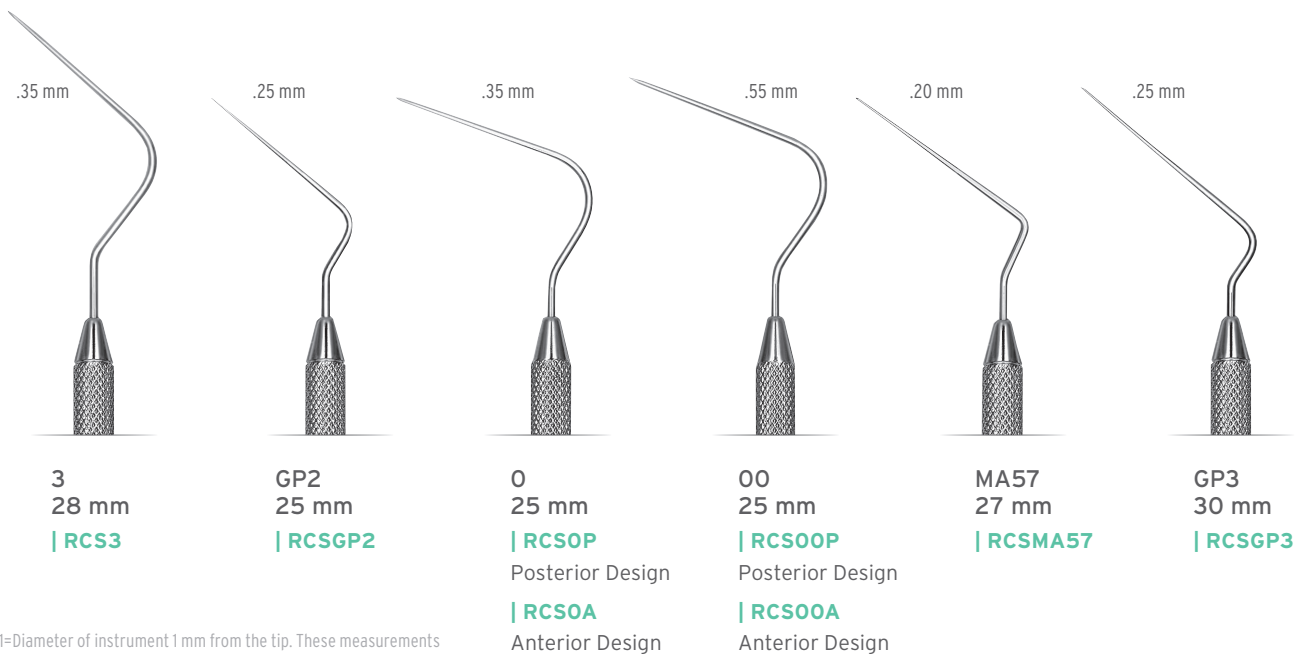


NICKEL TITANIUM ENDODONTIC SPREADERS*

Nickel Titanium, or NiTi, points provide these spreaders with extra flexibility and “memory” while the ergonomic, color-coded Satin Steel handles provide maximum comfort, control and easy identification. Choose from nine popular designs.



HEAT CARRIERS*

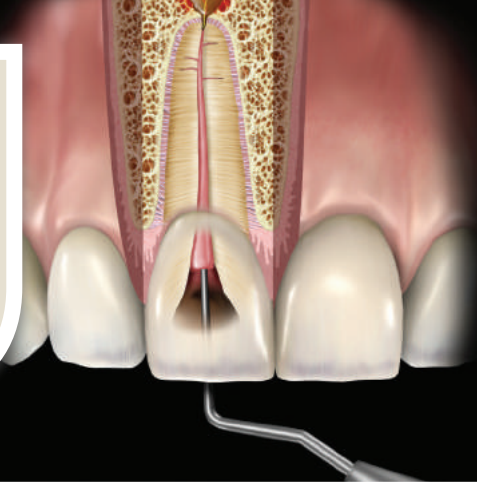


*D1=Diameter of instrument 1 mm from the tip. These measurements (i.e., .30) appear next to the tips of the instruments.



PLUGGERS

When performing vertical condensation, choose from ISO-sized anterior or posterior options, Machtou, the Glick Blade/Plugger or other options. These pluggers are handcrafted to exact specifications using the finest materials.



ISO SIZED PLUGGERS*

.30 mm



ISO Size 30
24 mm
| RCP30

.40 mm



ISO Size 40
24 mm
| RCP40

.50 mm



ISO Size 50
24 mm
| RCP50

.60 mm



ISO Size 60
24 mm
| RCP60

.40 mm



1/3
21 mm
| RCP1/3

.50 mm



5/7
21 mm
| RCP5/7

1.00 mm



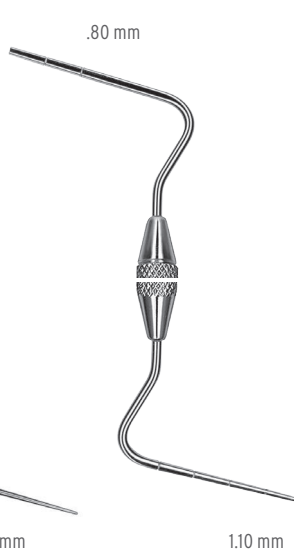
9/11
21 mm
| RCP9/11

.50 mm



1/2 Machtou
Root Canal
Plugger
| RCPM1/2

.80 mm



3/4 Machtou
Root Canal
Plugger
| RCPM3/4

.45 mm

.75 mm

1.15 mm

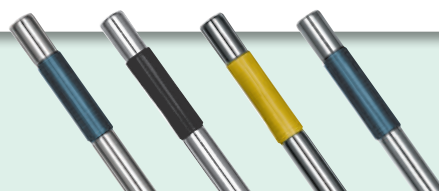
.60 mm

1.10 mm



1 Glick Blade/
Plugger
| RCPGL1
Handle options: #6, #7, #41

ISO Pluggers have an ISO color-coded band on the handle for ease of identification during usage: #30-Blue, #40-Black, #50-Yellow, #60-Blue.

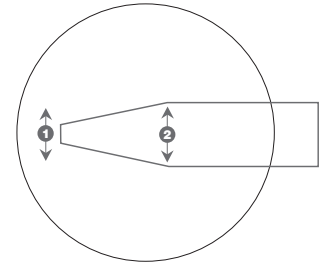


*D1=Diameter of instrument
1 mm from the tip. These
measurements (i.e., .30)
appear next to the tips of
the instruments.



SLEIMAN PLUGGERS / HEAT CARRIERS

TAPERED WORKING END



1

2

| | | |
|----------|---------|---------|
| RCPSL172 | 0.40 mm | 0.74 mm |
| RCPSL275 | 0.50 mm | 0.80 mm |
| RCPSL376 | 0.66 mm | 0.96 mm |
| RCPSL478 | 0.78 mm | 1.20 mm |
| RCPSL577 | 0.90 mm | 1.45 mm |

LUKS

.45 mm

.50 mm



L1
18 mm
| RCPL1



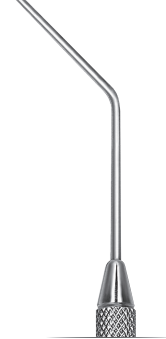
L2
18 mm
| RCPL2

.75 mm

1.00 mm



L3
18 mm
| RCPL3



L4
18 mm
| RCPL4



Sleiman
Root Canal
Plugger
| RCPSL172

Sleiman
Root Canal
Plugger
| RCPSL275

Sleiman
Root Canal
Plugger
| RCPSL376

Sleiman
Root Canal
Plugger
| RCPSL478

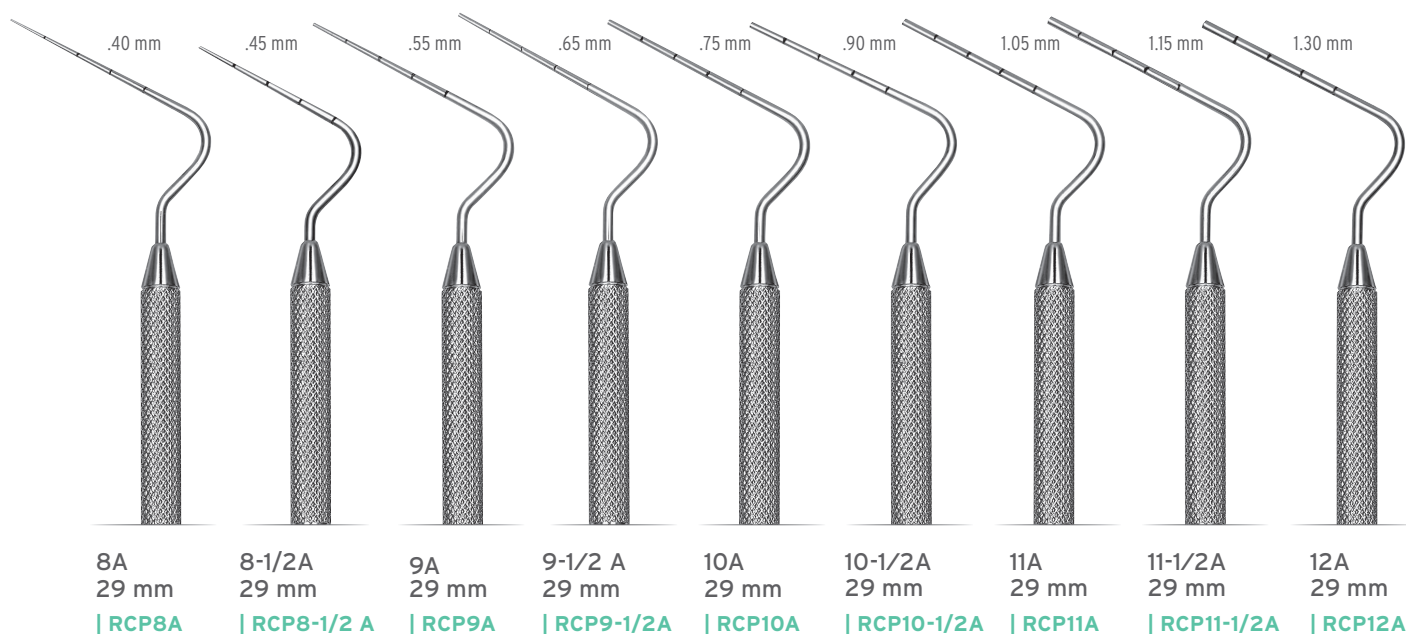
Sleiman
Root Canal
Plugger
| RCPSL577

*D1=Diameter of instrument 1 mm from the tip. These measurements (i.e., .30) appear next to the tips of the instruments. Marked at 5 mm intervals to assess penetration depth.

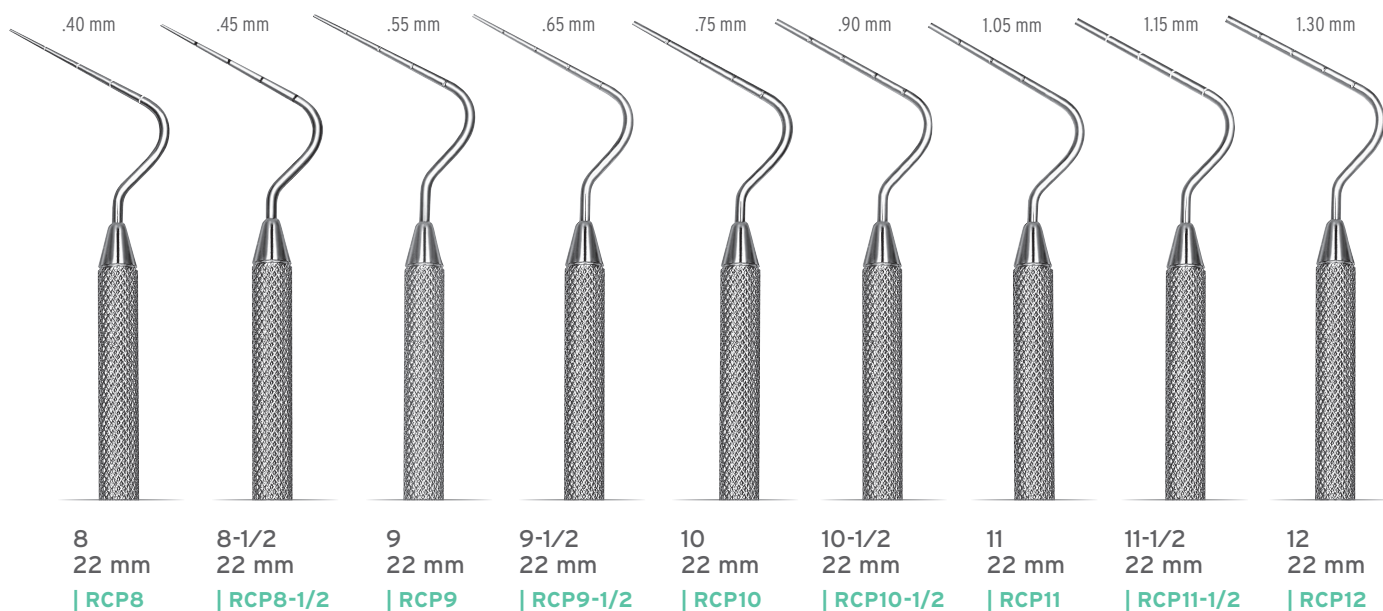


ANTERIOR

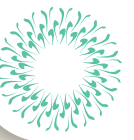
Anterior condensers are 7 mm longer than posterior condensers.



POSTERIOR

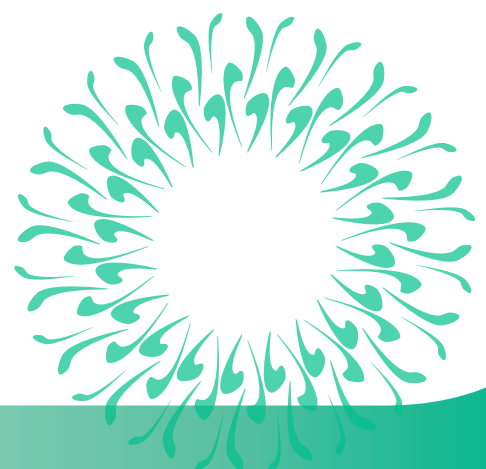
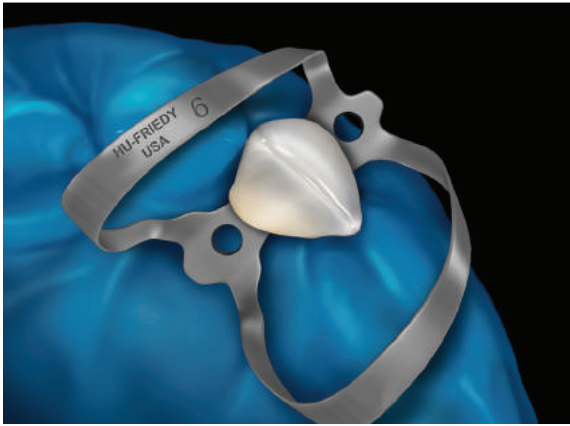
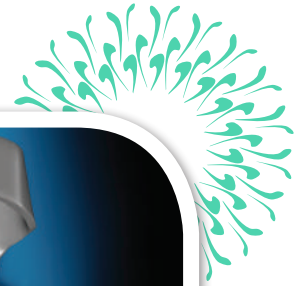


*D1=Diameter of instrument 1 mm from the tip. These measurements (i.e., .40) appear next to the tips of the instruments. The terms "Condensers" and "Pluggers" are interchangeable.



RUBBER DAM CLAMPS

Hu-Friedy rubber dam clamps are made in the USA from proprietary Satin Steel for corrosion resistance, superior strength, and a fine balance between flexibility and memory. The matte finish on all 48 styles absorbs and dissipates light instead of reflecting it back, so you can experience a comfortable field of vision that is easier on the eyes – to help you perform at your best.

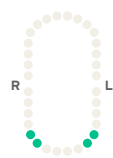




RUBBER DAM CLAMPS

A complete line of Satin Steel® Rubber Dam clamps for anterior, premolar and molar applications.

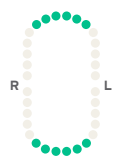
ANTERIOR



00

| RDCM00

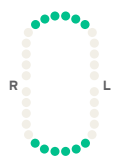
Flat jaws and high bow for small lower canines and first premolars.



6

| RDCM6

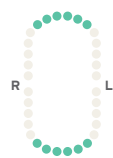
Slightly offset jaws for labial caries on anterior teeth.



9

| RDCM9

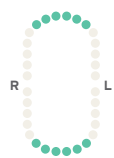
Offset flat jaws and stiff bow for anterior teeth.



9S

| RDCM9S

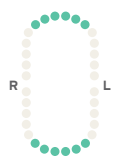
Offset flat serrated jaws for anterior teeth.



212

| RDCM212

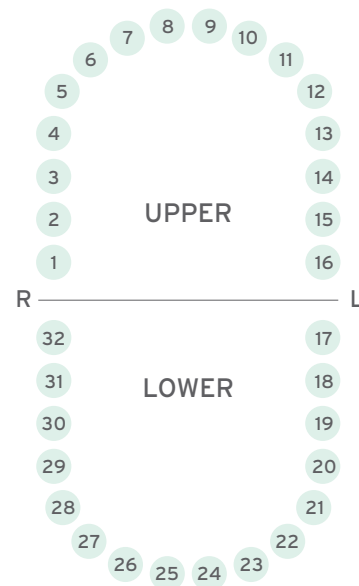
Flat jaws for labial caries on anterior teeth.



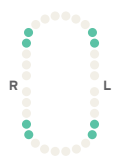
212SA

| RDCM212SA

Slightly offset staggered jaws for odd shaped anteriors.



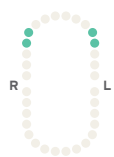
PREMOLARS



0

| RDCM0

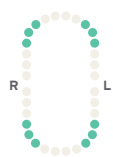
Flat jaws and high bow for longer premolars.



1

| RDCM1

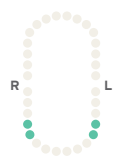
Slightly festooned jaws for upper premolars.



1A

| RDCM1A

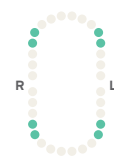
Deeply festooned jaws for canines and premolars.



2

| RDCM2

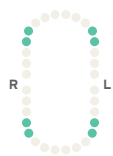
Flat jaws for premolars.



2A

| RDCM2A

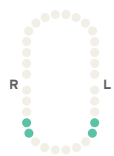
Flat jaws for larger premolars.



2AS

| RDCM2AS

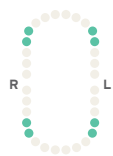
Flat serrated jaws for larger premolars.



W2

| RDCMW2

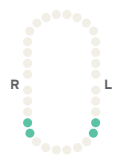
Flat jaws for premolars.



27N

| RDCM27N

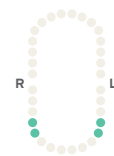
Slightly festooned jaws for premolars.



29

| RDCM29

Flat jaws for lower premolars.



209

| RDCM209

Small, flat jaws with stiff bow for lower premolars.

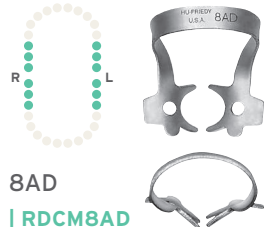




MOLARS (GENERAL)



8A
| RDCM8A
Deeply festooned four-point jaws for molars.



8AD
| RDCM8AD
Deeply festooned jaws and extended bow for distal access to molars.



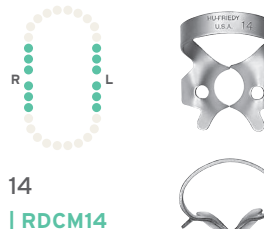
W8A
| RDCMW8A
Slightly festooned jaws for molars.



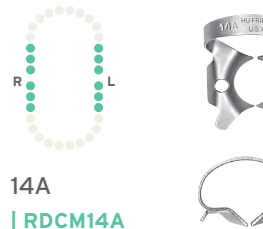
10
| RDCM10
Flat jaws designed for small upper left and lower right molars; paired with RDCM11.



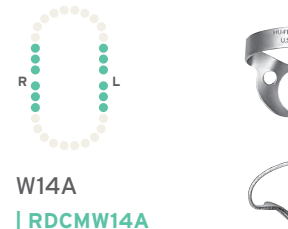
11
| RDCM11
Flat jaws designed for small upper right and lower left molars; paired with RDCM10.



14
| RDCM14
Deeply festooned jaws for partially erupted or irregularly shaped molars.



14A
| RDCM14A
Deeply festooned jaws for partially erupted or irregularly shaped molars; larger than RDCM14.



W14A
| RDCMW14A
Deeply festooned jaws for partially erupted or irregularly shaped molars.



18
| RDCM18
Flat jaws and stiff bow for molars.



24
| RDCM24
Flat jaws for upper right and lower left molars; paired with RDCM25.



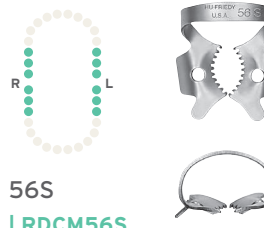
25
| RDCM25
Flat jaws for upper left and lower right molars; paired with RDCM24.



27
| RDCM27
Flat jaws for large molars.



56
| RDCM56
Slightly festooned jaws for large molars.

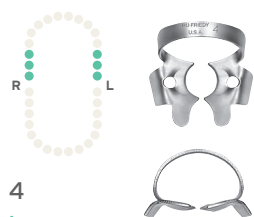


56S
| RDCM56S
Slightly festooned serrated jaws for large partially erupted or irregularly shaped molars.

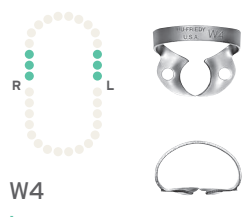


RUBBER DAM CLAMPS

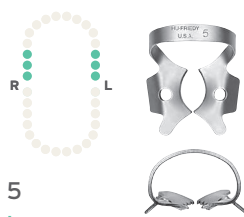
UPPER MOLARS



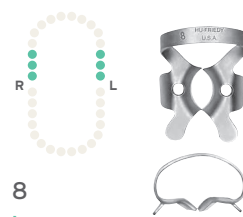
4
| RDCM4
Flat narrow jaws for small upper molars.



W4
| RDCMW4
Flat narrow jaws for small upper molars.



5
| RDCM5
Slightly festooned jaws for large upper molars.



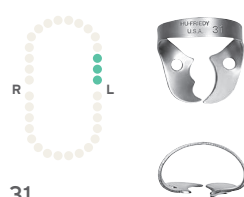
8
| RDCM8
Deeply festooned jaws for upper molars.



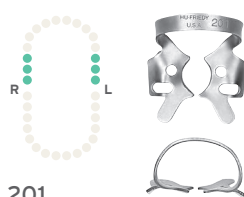
26N
| RDCM26N
Flat jaws for upper molars.



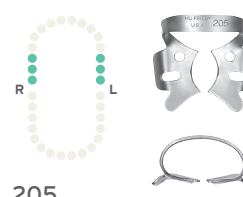
30
| RDCM30
Offset jaws for upper right molars; paired with RDCM31.



31
| RDCM31
Offset jaws for upper left molars; paired with RDCM30.

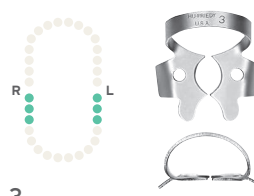


201
| RDCM201
Slightly festooned jaws for upper molars.

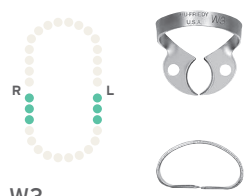


205
| RDCM205
Slightly festooned jaws for large upper molars.

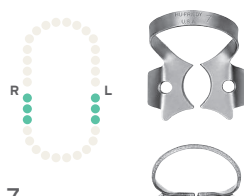
LOWER MOLARS



3
| RDCM3
Flat narrow jaws for small lower molars.



W3
| RDCMW3
Flat narrow jaws for small lower molars.



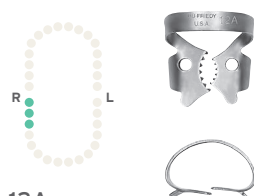
7
| RDCM7
Flat jaws for lower molars.



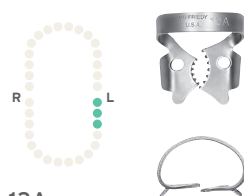
7A
| RDCM7A
Slightly reversed festooned jaws for large lower molars.



W7
| RDCMW7
Flat jaws for lower molars.



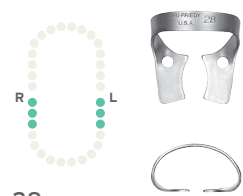
12A
| RDCM12A
Serrated offset jaws for lower right molars; paired with RDCM13A.



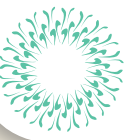
13A
| RDCM13A
Serrated offset jaws for lower left molars; paired with RDCM12A.



26
| RDCM26
Slightly reversed festooned jaws for small lower molars.



28
| RDCM28
Flat jaws for lower molars.



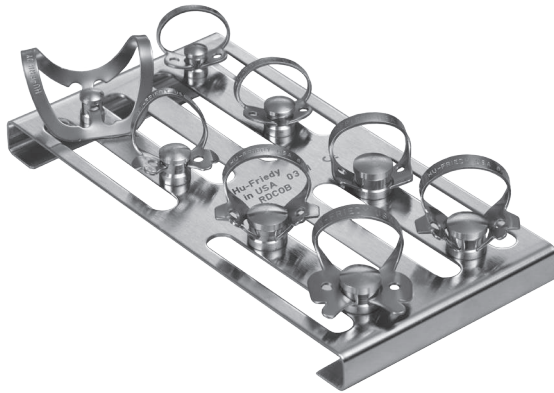
RUBBER DAM CLAMP ACCESSORIES & KITS

Rubber Dam Clamp Organizing Board*

| RDCOB

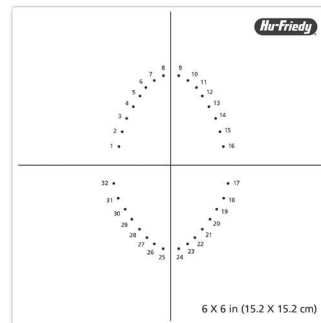
Store, sterilize and organize with eight pegs that securely hold your clamps. Clamps not included.

Dimensions:
4.62" x 2.4" x .375"
(117 mm x 61 mm x 10 mm)



Our line of 48 Satin Steel matte finish rubber dam clamps wouldn't be complete without these endo-essential accessories and kits. The IMS section of Endo Essentials includes IMS part boxes that are useful for clamp storage and sterilization.

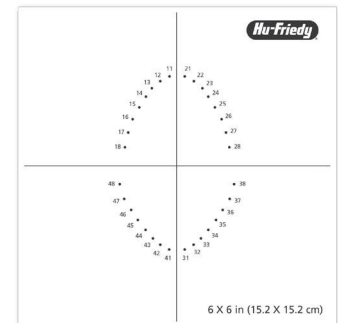
RUBBER DAM TEMPLATES



Universal Rubber Dam Template**

| RDTUNIV

Adult template shown.
Pedodontic template also included.



FDI Rubber Dam Template**

| RDTFDI

Adult template shown.
Pedodontic template also included.

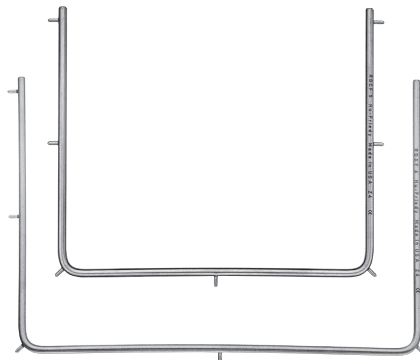
RUBBER DAM CLAMP FORCEPS



4
7" (17-1/2 cm)**
| RDF4

Rubber Dam
Forceps
6-1/2" (17 cm)**
| RDF

RUBBER DAM FRAMES



Rubber
Dam Frame
Child 5"
(13 cm)**
| RDCF5

Rubber
Dam Frame
Adult 6"
(15 cm)**
| RDAF6

RUBBER DAM PUNCHES



Rubber Dam
Punch
6-3/4" (16 cm)**
| RDP

Ainsworth
6-3/4" (17-1/2 cm)**
| RDPA

**Pictured at 50%.



RUBBER DAM KITS

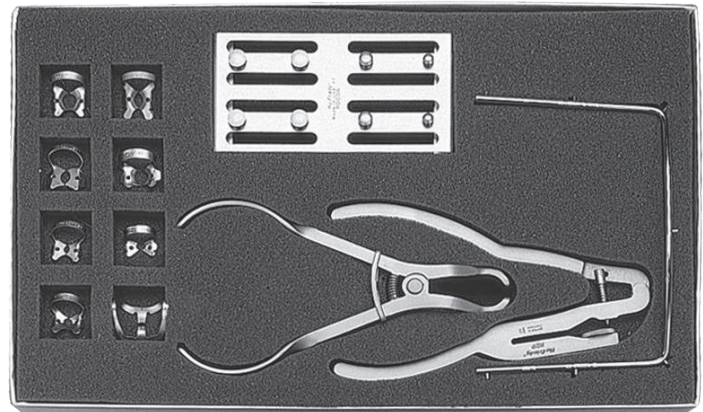
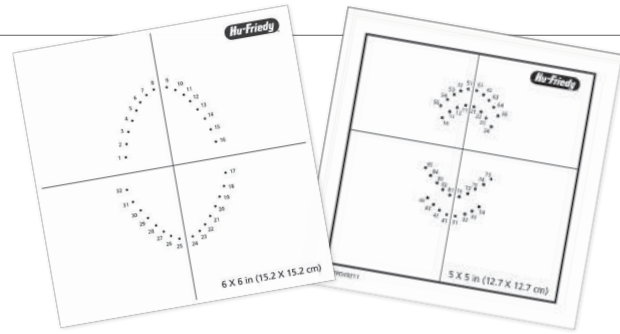
Rubber Dam kits and collections give clinicians more choices, from an entire kit to basic clamp set-ups.

Rubber Dam Kit

| RDKIT

Basic items needed for rubber dam procedures conveniently packaged in a kit (also available individually).

| | |
|-----------------------------------|---------|
| Rubber Dam Clamp Forceps | RDF |
| Rubber Dam Punch | RDP |
| Rubber Dam Frame-Adult | RDAF6 |
| Universal Rubber Dam Template | RDTUNIV |
| FDI Rubber Dam Template | RDTFDI |
| Rubber Dam Clamp Organizing Board | RDCOB |
| #0 Satin Steel Rubber Dam Clamp | RDCM0 |
| #1 Satin Steel Rubber Dam Clamp | RDCM1 |
| #2 Satin Steel Rubber Dam Clamp | RDCM2 |
| #7 Satin Steel Rubber Dam Clamp | RDCM7 |
| #8 Satin Steel Rubber Dam Clamp | RDCM8 |
| #8A Satin Steel Rubber Dam Clamp | RDCM8A |
| #14A Satin Steel Rubber Dam Clamp | RDCM14A |
| #212 Satin Steel Rubber Dam Clamp | RDCM212 |



Rubber Dam Clamp 7 Pack

| RDCSET7

| | |
|-----------------------------------|---------|
| #00 Satin Steel Rubber Dam Clamp | RDCM00 |
| #2 Satin Steel Rubber Dam Clamp | RDCM2 |
| #7 Satin Steel Rubber Dam Clamp | RDCM7 |
| #8 Satin Steel Rubber Dam Clamp | RDCM8 |
| #8A Satin Steel Rubber Dam Clamp | RDCM8A |
| #9 Satin Steel Rubber Dam Clamp | RDCM9 |
| #14A Satin Steel Rubber Dam Clamp | RDCM14A |



Rubber Dam Clamp 8 Pack

| RDCSET

| | |
|-----------------------------------|---------|
| #0 Satin Steel Rubber Dam Clamp | RDCM0 |
| #1 Satin Steel Rubber Dam Clamp | RDCM1 |
| #14A Satin Steel Rubber Dam Clamp | RDCM14A |
| #2 Satin Steel Rubber Dam Clamp | RDCM2 |
| #212 Satin Steel Rubber Dam Clamp | RDCM212 |
| #7 Satin Steel Rubber Dam Clamp | RDCM7 |
| #8 Satin Steel Rubber Dam Clamp | RDCM8 |
| #8A Satin Steel Rubber Dam Clamp | RDCM8A |

HU-FRIEDY'S INSTRUMENT MANAGEMENT SYSTEM

Hu-Friedy's Instrument Management System, IMS, is the most comprehensive, reliable and complete instrument processing and infection control system on the market today. Your instruments are protected and secure so they last longer. Your staff benefits because instrument handling is decreased. Hu-Friedy's long lasting, low maintenance stainless steel cassettes hold each procedural set-up through the entire cleaning, sterilization, storage and presentation cycle. IMS was designed for you and your busy practice—it's adaptable, flexible, easy, safe and efficient.

1. Chairside: Patient Preview & Presentation

- Systematically organizes instruments according to procedure type, allowing for more focus on patients and less time spent looking for missing instruments
- Neatly organized instruments offer more professional appearance and can help enhance referrals

2. Cleaning: Processed & Prepped

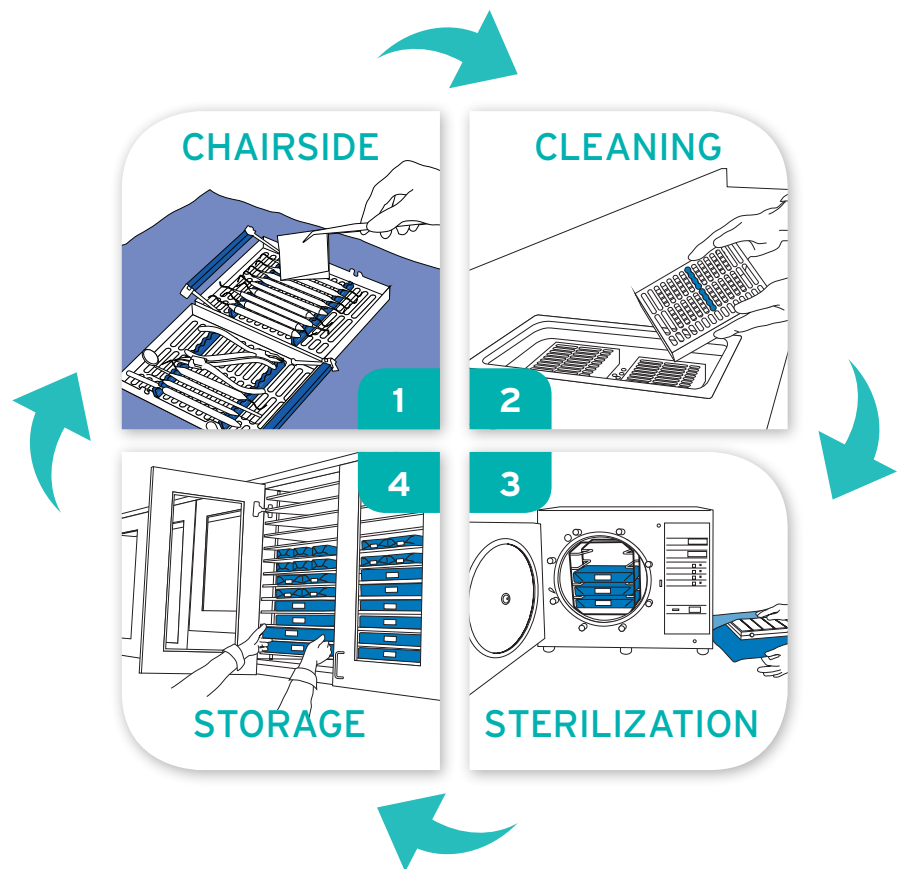
- Instruments are kept together throughout cleaning, rinsing and drying, reducing the potential for breakage or loss
- Allows for less handling of instruments, reducing the chance for sharps injuries

3. Sterilization: Neat & Complete

- Cassettes with instruments are packaged and placed in autoclave together to help reduce consumable usage
- Reduced handling of instruments provides safer protocol and minimizes liability

4. Storage: Wrapped & Ready

- Ready for use or storage until needed for increased time savings
- Complete procedural set-ups for easy set-up and teardown





POINTS OF PERFORMANCE

Ergonomic latch with positive locking mechanism is safe and easy-to-use, allows one-handed opening and visual confirmation if the cassette is locked / unlocked. (Figure 2)

Revolutionary new hole pattern design creates 30% additional open area for more access during cleaning and sterilization, and is compatible with current cleaning equipment, including automated washers.

Innovative color-coded silicone rail system, available in 11 color options, significantly reduces instrument contact by up to 59%, allowing for more water flow while protecting the instruments during reprocessing. (Figure 1)

High quality, electropolished stainless steel protects against corrosion while providing a professional appearance.

Smooth round corners and slotted edges increase drainage and reduce drying time.

New beveled edge allows for a more ergonomic grasp.

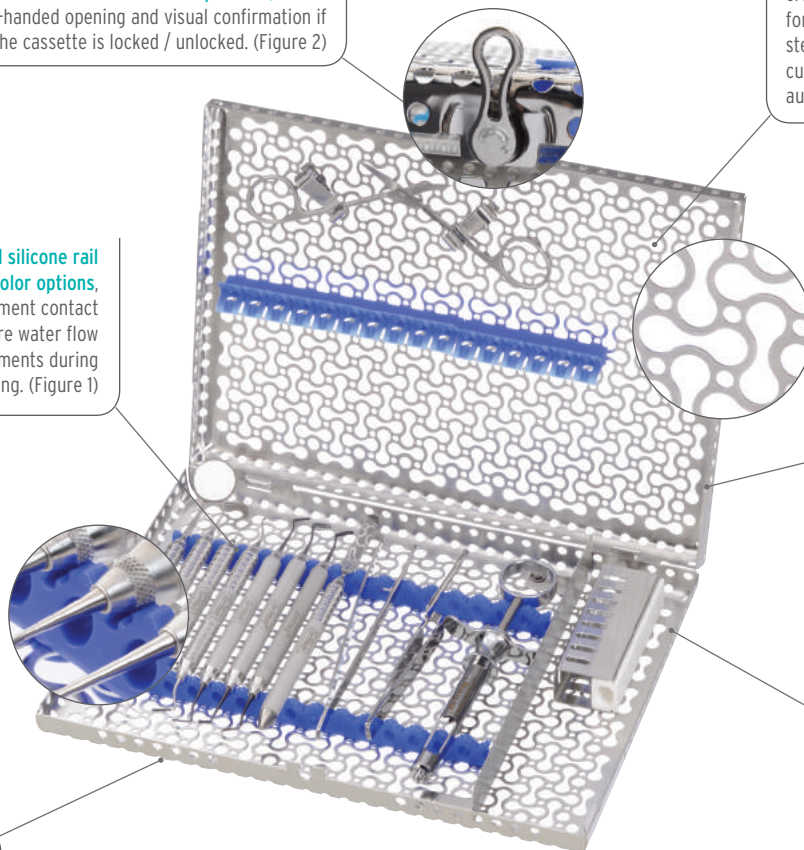


Figure 1

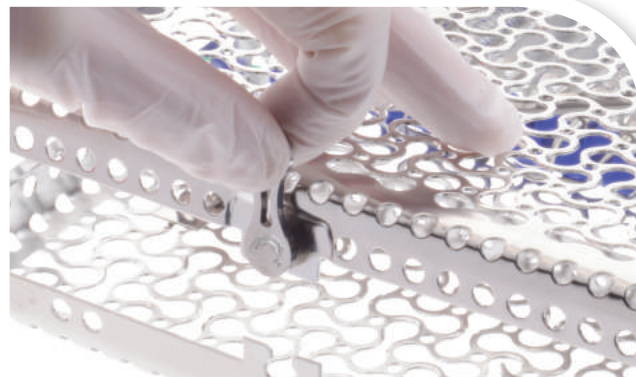


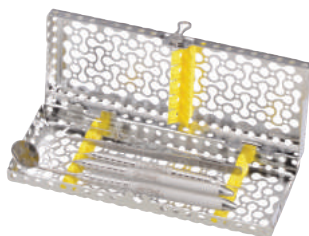
Figure 2

Infinity Series™ Cassettes are made of long-lasting, low-maintenance stainless steel. Soft, colored silicone rails securely hold instruments throughout the processing cycle. Available in over 100 different sizes, configurations and color options, cassettes can be specialized to meet your needs.

IMS INFINITY SERIES™ CASSETTES & ACCESSORIES



| | |
|------------|----------|
| Red | IMN6050 |
| Gray | IMN6051 |
| White | IMN6052 |
| Orange | IMN6053 |
| Purple | IMN6054 |
| Yellow | IMN6055 |
| Lavender | IMN6056 |
| Black | IMN6057 |
| Blue | IMN6058 |
| Green | IMN6059 |
| Ocean Blue | IMN60511 |



**Exam Cassette
5 Instruments**
Exterior Dimensions
3" x 8" x 1.25"
(76 mm x 203 mm x 32 mm)
Holds 5 instruments.

| | |
|------------|----------|
| Red | IMN5080 |
| Gray | IMN5081 |
| White | IMN5082 |
| Orange | IMN5083 |
| Purple | IMN5084 |
| Yellow | IMN5085 |
| Lavender | IMN5086 |
| Black | IMN5087 |
| Blue | IMN5088 |
| Green | IMN5089 |
| Ocean Blue | IMN50811 |

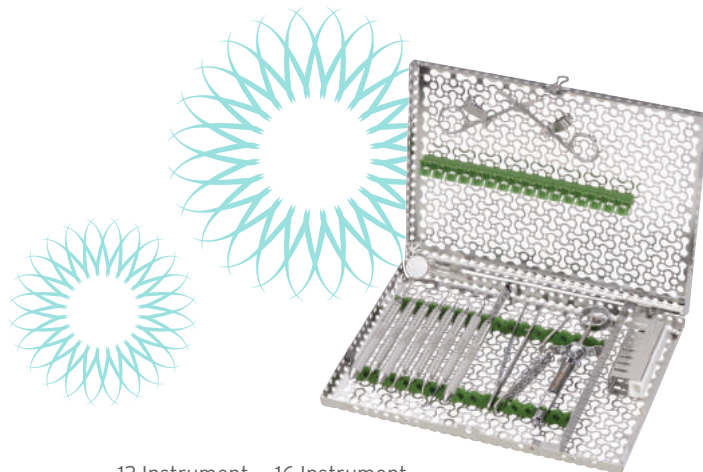


**Small Cassette
8 Instruments**
Exterior Dimensions
5.5" x 8" x 1.25"
(140 mm x 203 mm x 32 mm)
Holds 8 instruments with an
accessory area.



| | |
|------------|----------|
| Red | IMN8120 |
| Gray | IMN8121 |
| White | IMN8122 |
| Orange | IMN8123 |
| Purple | IMN8124 |
| Yellow | IMN8125 |
| Lavender | IMN8126 |
| Black | IMN8127 |
| Blue | IMN8128 |
| Green | IMN8129 |
| Ocean Blue | IMN81211 |

**Signa-Stat Cassette
12 Instruments**
Exterior Dimensions
6.5" x 10.5" x 1.25"
(165 mm x 267 mm x 32 mm)
Holds 12 instruments with
an accessory area. Fits in
SciCan® STATIM® or the
Midmark M3 autoclave.



12 Instrument 16 Instrument

| | | |
|------------|----------|----------|
| Red | IMN4120 | IMN4160 |
| Gray | IMN4121 | IMN4161 |
| White | IMN4122 | IMN4162 |
| Orange | IMN4123 | IMN4163 |
| Purple | IMN4124 | IMN4164 |
| Yellow | IMN4125 | IMN4165 |
| Lavender | IMN4126 | IMN4166 |
| Black | IMN4127 | IMN4167 |
| Blue | IMN4128 | IMN4168 |
| Green | IMN4129 | IMN4169 |
| Ocean Blue | IMN41211 | IMN41611 |

**Large Cassette
12 or 16 Instruments**
Exterior Dimensions
8" x 11" x 1.25"
(203 mm x 280 mm x 32 mm)
Holds 16 instruments with an
accessory area.

Also available in 8" x 10.5" x
1.25" size (IMN416xQ) to fit
unique ultrasonic tanks.



CASSETTE ACCESSORIES

IMS CASSETTE BARCODE CLIP

Snap-on Barcode for outside of Cassettes

| **IMS-CABL**

Dimensions: .75" x 2.26" x .067"
(19 mm x 57.4 mm x 1.7 mm)

Contains lasermarked barcode to be used for identification and tracking purposes. Compatible with standard barcode reader. Follows HIBC barcode standards. Lasermark tested to last more than 800 sterilization cycles. (Shown at 50% actual size.)



IMS ENDODONTIC STAND

Hinged, double-lid stand holds endodontic files and reamers. Lid is etched with a ruler to measure stop positions easily from either direction.

IMS Endodontic Stand, Holds 24

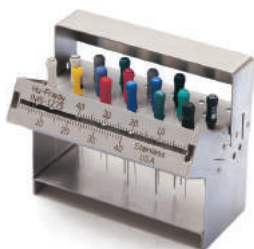
| **IMS-1275**

Exterior Dimensions:
2.6" x 2.25" x 1.2"
(67 mm x 57 mm x 30 mm)

IMS Endodontic Stand, Holds 48

| **IMS-1275D**

Exterior Dimensions:
2.6" x 2.25" x 1.2"
(67 mm x 57 mm x 30 mm)



IMS-1275

AIR WATER SYRINGE CLIPS

Designed to fit large or small Resin Cassettes. Clip holds air/water syringe tip securely in place throughout cleaning and sterilization.

IMS Resin Cassette Clip

| **IMS-1278**

For large resin cassettes

IMS Resin Cassette Clip

| **IMS-1279**

For small two-tier resin cassettes



IMS-1278

AIR AND WATER CLIPS

Designed to fit large or small Signature Series Cassettes. (pictured right) Signature Series IMS clips can be permanently installed in your cassettes

Infinity Series Air/Water Clip

| **IM1005N**

Signature Series Air/Water Clip

| **IM1005**

Infinity and Signature Series
Double-Decker Air/Water Clip

| **IM1006**



IMS PARTS BOX

Designed to keep small items such as rubber dam clamps and matrix band retainers organized during the sterilization process.

IMS Large Parts Box | **IMS-1273**

Exterior Dimensions: 3.5" x 1.12" x 1"
(89 mm x 29 mm x 25 mm)

IMS Small Parts Box | **IMS-1271**

Exterior Dimensions: 1.56" x 1.25" x 1"
(40 mm x 32 mm x 25 mm)



IMS BUR CUSHIONS

A hollow, rectangular, silicone base with a stainless steel lid that is designed to hold burs securely in place during cleaning and sterilization. Hollow design allows drainage and proper cleaning.



IMS Bur Cushion, Short Lid

| **IMS-1372S**

Holds 12 burs.
Exterior Dimensions:
3.3" x 1.3" x 0.9"
(84 mm x 33 mm x 22 mm)

IMS 1/2 Bur Cushion, Short Lid

| **IMS-1372SH**

Holds 6 burs.
Exterior Dimensions:
1.75" x 1.3" x 0.9"
(44 mm x 33 mm x 22 mm)



IMS Bur Cushion, Tall Lid

| **IMS-1372T**

Holds 12 burs.
Exterior Dimensions:
3.3" x 2.44" x 0.9"
(84 mm x 62 mm x 22 mm)

IMS 1/2 Bur Cushion, Tall Lid

| **IMS-1372TH**

Holds 6 burs.
Exterior Dimensions:
1.75" x 2.44" x 0.9"
(44 mm x 62 mm x 22 mm)

IMS RUBBER DAM CLAMP ORGANIZING BOARD

RDC Organizing Board | **RDCOB**

Dimensions: 4.6" x 2.4" x .375"
(117 mm x 61 mm x 10 mm)



not actual size

Holds up to 8 clamps during sterilization. Fits into cassette accessory area.

HINGED INSTRUMENT CLIPS

Secure scissors, hemostats and air/water syringe tips in lid of cassette.

Hinged Instrument Clips, 2-Pack

| **IM1000**

Hinged Instrument Clips, 6-Pack

| **IM1002**



NEEDLE CAP HOLDER

Needle Cap Holders, 2-Pack | **IM1001**

Needle Cap Holders, 6 Pack | **IM1003**

Combination Pack** | **IM1004**

**6 snap-in needle cap holders and 6 snap-in hinged instrument clips. Maintains cap in upright position for one-handed needle recapping.



Complete list of cassette replacement parts can be found on Hu-Friedy.com/IMS-Replacement-Parts



KEY OPINION LEADERS

Key Opinion Leaders' names are recognizable and their work is renowned. Hu-Friedy is honored to be in close association with Key Opinion Leaders, and it is a pleasure to present them to you as individuals full of life, character and vision. Hu-Friedy strives to supply our Key Opinion Leaders of all specialties with the most current offerings and information on our products and services. Being affiliated with outstanding dental professionals only helps to strengthen Hu-Friedy in our mission:

To improve lives through dentistry – smile after smile.



PROFESSOR MARWAN
ABOU-RASS

ABOU-RASS MICROSURGICAL ENDODONTIC KIT*

The instruments selected by Professor Marwan Abou-Rass for his new kit include those few that he relies on for clinical, education, and research activities. The entire collection of "MAR" instruments, which he uses in his work, can be found in the Microsurgical section of Endo Essentials.

A Professor Emeritus of the University of Southern California, Senior Academic Consultant at the Riyadh Military Hospital and General Director of the Prince Abdul- Rahman Advanced Dental Institute (PAADI), in Riyadh, Saudi Arabia, this Key Opinion Leader was instrumental in developing our apical product line.

| | |
|---|----------------------------------|
| Large Signature Series 16 Instrument Cassette – Blue, or Large Signature Series 16 Instrument DIN Cassette – Blue | IM4168 or IMDIN138S |
| IMS Signature Cassette Clips, 2 | I1000 |
| #9 Molt Periosteal Elevator | P9 |
| #1 Henahan Retractor | TRH1 |
| #3 Abou-Rass Endo Excavator DE | MAR-C3 |
| #3 Abou-Rass Surgical Curette SE | MAR-SC3 |
| #1 Abou-Rass Endo Explorer DE | MAR-EX1 |
| #DG16/17 DE Endodontic Explorer | EXDG16/17 |
| #1 Abou-Rass Straight Apical Condenser | MAR-SAC1 |
| #1 Abou-Rass Angulated Apical Condenser | MAR-AAC1 |
| #3 Abou-Rass Straight Burnisher | MAR-SB3 |
| #3 Abou-Rass Burnisher SE | MAR-B3 |
| #50L Fox Tissue Pliers w/Lock | TP50L |
| #1 Velvart Endo Satin Steel Micro Mirror | MMVEL1 |
| #2 Velvart Endo Satin Steel Micro Mirror | MMVEL2 |
| Metzenbaum Perma Sharp Scissors Cv/BI | S5055 |
| Crile-Wood Perma Sharp Needle Holder | NH5038 |
| Halsey Perma Sharp N.H., Serrated | NH5037 |
| #4 Kramer-Nevins DE Curette | SKN4 |
| Also available in Infinity Series™ Cassettes and Infinity Series™ DIN Cassettes | IMN4168 or IMEDIN1885 |

*Add cassette clips, to anchor instruments to the top of your cassette, and add accessories as needed.



KEY OPINION LEADER KITS



DR. RAINER HAHN



HAHN ENDODONTIC MICROSURGICAL KIT*

| | |
|---|---------------------------------|
| Large Signature Series, 16 Instrument Cassette – Blue, or Large Signature Series, 13 Instrument DIN Cassette – Blue | IM4168 or IMDIN138 |
| Microsurgical Scissors, Straight, Castroviejo, 18 mm | SPV |
| Microsurgical Tissue Pliers, Curved, 18 mm | TPSLCOCMN |
| Microsurgical Needle Holder, Straight, Castroviejo | NHDPV |
| Microsurgical Scalpel Handle | SHDPV |
| Microsurgical Periosteal | PH26M |
| Spahr Periosteal (Optional) | PPSPAHR6 |
| Mini Scalpel Blade | MB69 |
| Labanca Periosteal, #6 Satin Steel Handle | PPLABANCA6 |
| Also available in Infinity Series™ Cassettes and Infinity Series™ DIN Cassettes | IMN4168 or IMEDIN138 |



DR. NOAH CHIVIAN



DR. DONALD ARENS



CHIVIAN-ARENS ENDODONTIC SURGERY KIT** | ENDO-SXKIT

| | |
|--|---------------------------------|
| Large Signature Series 12 Instrument Cassette – Gray, or Large Signature Series, 13 Instrument DIN Cassette – Gray | IM4121 or IMDIN131 |
| 23/UNC15 University of North Carolina Expro | XP23/UNC15 |
| 1 Explorer | EXD1 |
| 5 Scalpel Handle | 10-130-05 |
| 149 Periosteal | P149 |
| 2/4 Molt Surgical Curette | CM2/4 |
| 1 Hourigan Retractor | PH1 |
| 85 Lucas Surgical Curette | CL85 |
| 87 Lucas Surgical Curette | CL87 |
| 17/18 Indiana University Curette | SIU17/18 |
| 13/14 Columbia Curette | SC13/14 |
| 18 Iris Scissors Curved, Delicate | S18 |
| Mathieu-Kocher Perma Sharp Needle Holder | NH5074 |
| Also available in Infinity Series™ Cassettes (sold separately) and Infinity Series™ DIN Cassettes | IMN4161 or IMEDIN131 |

*Add cassette clips, to anchor instruments to the top of your cassette, and add accessories as needed. †Cassette sold separately.



DR. BERTRAND KHAYAT

KHAYAT ENDODONTIC SURGICAL KIT*

| **IMKHAYAT1** (Europe) | **IMKHAYAT2** (North America)

| | |
|---|---------------------------------|
| Large Signature Series 20 Instrument Cassette – Blue, or Large Signature Series 18 Instrument DIN Cassette – Blue | IM4208 or IMDIN138S |
| Scalpel Handle | 10-130-05E |
| Microsurgical Scalpel Blade/Mirror Handle, Stainless Steel | SHDPV |
| Micro Mirror Round, 2.5 mm | MM4 |
| Khayat Apical Plugger, with Satin Steel Handle | PLGBK6 |
| Khayat Instrument, with Satin Steel Handle | PF18ABK6 |
| 85 Lucas Surgical Curette, Spoon Shape, Short Satin Steel Handle | CL856 |
| Velvart Condenser, with Satin Steel Handle | PLGVEL56 |
| NEW! Perma Sharp General Tissue Pliers, 6" (15 cm) | TP5072 |
| PR-3 Prichard Periosteal, with Satin Steel Handle | PPR3S6 |
| 13/14 Columbia Curette, Universal with Satin Steel Handle | SC13/146 |
| 34/35 Jacquette Scaler, Miniature, Posterior with Satin Steel Handle | SJ34/356 |
| 89/92 Carver Discoid-Cleoids, with Satin Steel Handle | CD89/926 |
| DG 16/17 Endodontic Explorer, with Satin Steel Handle | EXDG16/176 |
| Cawood-Minnesota Retractor | CRM2 |
| NEW! Perma Sharp Needle Holder, Castroviejo Curved, Round Handle, 5.5" (14 cm) | NH5021RC |
| 14 LaGrange Double-Curved Super Cut Scissors | S14SC |
| Also available in Infinity Series™ Cassettes (sold separately) and Infinity Series™ DIN Cassettes | IMN4208 or IMEDIN188 |

*Add cassette clips, to anchor instruments to the top of your cassette, and add accessories as needed.



DR. PETER VELVART

VELVART ENDODONTIC MICROSURGICAL KIT*

| | |
|---|---------------------------------|
| Large Signature Series 16 Instrument Cassette – Blue, or Large Signature Series 13 Instrument DIN Cassette – Blue | IM4168 or IMDIN138 |
| Microsurgical Mirror, 3 mm | MM4 |
| Microsurgical Mirror, 5 mm | MM5 |
| Microsurgical Mirror, 7 mm x 2 mm | MM7 |
| Microsurgical Mirror, 9 mm x 3 mm | MM8 |
| Microsurgical Needle Holder, 18 cm, Straight | NHDPV |
| Microsurgical Mirror Handle/Micro Scalpel Handle | SHDPV |
| Mini Scalpel Blade, 12 per pack | MB67 |
| Mini Scalpel Blade, 12 per pack | MB69 |
| Micro Surgical Scissors, 18 cm | SPV |
| Micro Tissue Pliers, 18 cm, Straight | TPDAPV |
| Micro Tissue Pliers, 18 cm, Angled | TPDSCPV |
| Micro Tissue Pliers, 18 cm, Straight | TPDSSPV |
| Also available in Infinity Series™ Cassettes and Infinity Series™ DIN Cassettes | IMN4168 or IMEDIN138 |



KEY OPINION LEADER KITS



PROFESSOR DR. PIERRE MACHTOU

MACHTOU ENDODONTIC PRE-TREATMENT KIT*

| | |
|---|---------------------------------|
| Large Signature Series 16 Instrument Cassette – Blue, or Large Signature Series 16 Instrument DIN Cassette – Blue | IM4168 or IMDIN168 |
| IMS Signature Cassette Clips, 2 | I1000 |
| IMS Bur Cushion, Short Lid, Holds 12 | IMS-1372S |
| Articulation Paper Pliers | APF2E |
| Hollenbach Carver, #6 Satin Steel Handle | CVHL3S6 |
| Universal Pliers | DPU17 |
| Endodontic Excavator, #6 Satin Steel Handle | EXC32L6 |
| Explorer, #30 Handle, 12.5 mm | EXS6XL |
| Kelly Hemostat, 14 mm | H1 |
| 5 Front Surface Mouth Mirror | MIR5 |
| #6 Satin Steel European Mirror Handle | MHE6 |
| Qulix® UNC Color-coded Probe, #6 Satin Steel Handle | PCPUNC156 |
| Loesche 2 Composite/Filling, #6 Satin Steel Handle | PFIGML26 |
| Rubber Dam Frame, Adult | RDAF6 |
| #1 Rubber Dam Clamp | RDCM1 |
| #212 Rubber Dam Clamp | RDCM212 |
| #26N Rubber Dam Clamp | RDCM26N |
| #4 Rubber Dam Clamp | RDCM4 |
| #8 Rubber Dam Clamp | RDCM8 |
| #9 Rubber Dam Clamp | RDCM9 |
| #W8A Rubber Dam Clamp | RDCMW8A |
| Rubber Dam Clamp Forceps | RDF4 |
| Iris Scissors, Straight, Delicate, 11.5 cm | S17 |
| 204S Sickle Scaler, #6 Satin Steel Handle | S204SD6 |
| Anesthetic Syringe, Type CW | SYRCWE |
| Also available in Infinity Series™ Cassettes and Infinity Series™ DIN Cassettes | IMN4168 or IMEDIN168 |

MACHTOU ENDODONTIC TREATMENT KIT*

| | |
|--|---------------------------------|
| Large Signature Series 16 Instrument Cassette – Blue or Large Signature Series 16 Instrument DIN Cassette – Blue | IM4168 or IMDIN168 |
| IMS Signature Series Large Parts Box | IMS-1273 |
| Cement Spatula | CSA6 |
| 1 Perry Dressing Pliers | DP1 |
| DG16 Explorer, #7 Satin Steel Colours Handle | EXDG167 |
| 5 Front Surface Mouth Mirror, Simple Stem | M5C |
| #6 Satin Steel European Mirror Handle | MHE6 |
| 10 Root Canal Plugger | RCP10 |
| 11 Root Canal Plugger | RCP11 |
| 8 Root Canal Plugger | RCP8 |
| 9 Root Canal Plugger | RCP9 |
| 1/2 Machtou Root Canal Plugger | RCPM1/2 |
| 3/4 Machtou Root Canal Plugger | RCPM3/4 |
| 11T Spreader | RCSD11T |
| Iris Scissors, Straight, Delicate, 11.5 cm | S17 |
| Also available in Infinity Series™ Cassettes and Infinity Series™ DIN Cassettes | IMN4168 or IMEDIN168 |

*Add cassette clips, to anchor instruments to the top of your cassette, and add accessories as needed.



DR. THOMAS VON ARX



VON ARX APICAL MICROSURGERY INSTRUMENT KIT*

| | |
|---|---------------------------------|
| Large Signature Series 20 Instrument Cassette – Blue, or Large Signature Series 18 Instrument DIN Cassette – Blue | IM4208 or IMDIN138S |
| Signature Series Cassette Clips, 2 | I1000 |
| Scalpel Handle | 10-130-05E |
| #15C Scalpel Blades | 10-256-15 |
| 84 Lucas Surgical Curette, #6 Satin Steel Handle | CL846 |
| 86 Lucas Surgical Curette, #6 Satin Steel Handle | CL866 |
| 32L Excavator, #6 Satin Steel Handle | EXC32L6 |
| E1 Excavator (12-9-15), #6 Satin Steel Handle | EXCE16 |
| Halsted-Mosquito Hemostat, Straight, 4.72" (12 cm) | H4 |
| Abou-Rass Microsurgical Excavator | MAR-C1 |
| Apical Burnisher/Plugger, Large, Left | MCBLL |
| Apical Burnisher/Plugger, Medium, Left | MCBLM |
| Apical Burnisher/Plugger, Small, Left | MCBLS |
| Apical Burnisher/Plugger, Large, Right | MCBRL |
| Apical Burnisher, Medium, Right | MCBRM |
| Apical Burnisher, Small, Right | MCBRS |
| Microsurgical Explorer | MEX16 |
| Markel Adult Mouth Prop | MP54 |
| Perma Sharp Needle Holder Castroviejo, Straight | NH5024 |
| Perma Sharp Needle Holder Crile-Wood | NH5038 |
| Colorvue® Probe Tips, 12 pcs (3-6-9-12) | PCV12PT |
| Colorvue Satin Steel Handle | PH6 |
| Buser Periosteal, #6 Satin Steel Handle | PPBUSER6 |
| 3/9A Prichard Periosteal, #6 Satin Steel Handle | PPR3/9A6 |
| Microsurgical Scissors, Curved, Titanium | STMBH |
| 8A XTS® Satin Steel Composite Filling Instrument | TNPF18A |
| Tissue Pliers Micro, Straight, Titanium | TPASTMBH |
| Also available in Infinity Series™ Cassettes and Infinity Series™ DIN Cassettes | IMN4208 or IMEDIN188 |

*Add cassette clips, to anchor instruments to the top of your cassette, and add accessories as needed.

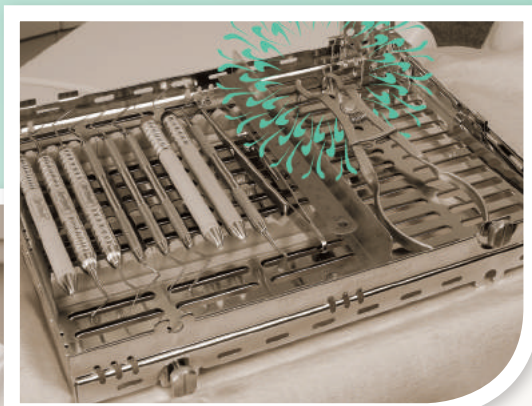
†Add a RDP or RDPA Rubber Dam Punch to your kit, and additional clamps such as the RDCM12A – paired with RDCM13A.

ENDODONTIC INFINITY KIT**

| | |
|--|---------------------------------|
| Large Infinity 12 Instrument Cassette – Gray, or Large Signature Series, 13 Instrument DIN Cassette – Gray | IMN4121 or IMEDIN131 |
| #6 Satin Steel Mirror Handle | MH6 |
| 4 Front Surface Mouth Mirror | MIR4 |
| DG16 Endo Explorer, #6 Satin Steel Handle | EXDG166 |
| 1 Locking Endo Pliers | EPL1 |
| 31L Endo Excavator, #6 Satin Steel Handle | EXC31L6 |
| D11 Nickel Titanium Endo Spreader | RCSD11NT |
| 1/3 Endo Plugger | RCP1/3 |
| 5/7 Endo Plugger | RCP5/7 |
| 9/11 Endo Plugger | RCP9/11 |
| 1 Glick Blade/Endo Plugger | RCPGL1 |
| Miller Articulating Paper Forceps | APF2 |
| CW Aspirating Anesthetic Syringe | SYRCW |
| Rubber Dam Forceps | RDF |
| #1 Rubber Dam Clamp | RDCM1 |
| #2 Rubber Dam Clamp | RCDM2 |
| #9 Rubber Dam Clamp | RDCM9 |
| #26N Rubber Dam Clamp | RDCM26N |
| Endo Stand, Holds 24 Files and Reamers | IMS-1275 |
| Small Parts Box | IMS-1271 |
| Bur Cushion Short Lid, Holds 12 | IMS-1372S |
| A/W Syringe Tip Clip | IM1005 |
| Also available in Infinity Series™ Cassettes and Infinity Series™ DIN Cassettes | IMN4128 or IMEDIN131 |

ENDODONTIC INFINITY KIT 2**

| | |
|--|---------------------------------|
| Large Infinity 12 Instrument Cassette – Gray, or Large Signature Series, 13 Instrument DIN Cassette – Gray | IMN4121 or IMEDIN131 |
| #6 Satin Steel Mirror Handle | MH6 |
| 4 Front Surface Mouth Mirror | MIR4 |
| 5 Explorer | EXD5 |
| CP-12 Probe | PCP12 |
| DG16 Endo Explorer | EXDG16 |
| 1 Locking Endo Pliers | EPL1 |
| 31L Endo Excavator | EXC31L |
| D11T Endo Spreader | RCSD11T |
| 5/7 Endo Plugger | RCP5/7 |
| 1 Glick Blade/Endo Plugger | RCPGL1 |
| Bur Cushion | IMS-1372S |
| Small Parts Box | IMS-1271 |
| #1 Rubber Dam Clamp | RDCM1 |
| #2 Rubber Dam Clamp | RCDM2 |
| #9 Rubber Dam Clamp | RDCM9 |
| #26N Rubber Dam Clamp | RDCM26N |
| Rubber Dam Forceps | RDF |
| Miller Articulating Paper Forceps | APF2 |
| Also available in Infinity Series™ Cassettes and Infinity Series™ DIN Cassettes | IMN4128 or IMEDIN131 |



For more information about
Hu-Friedy's Total Solutions visit
HU-FRIEDY.COM

FPO BOX

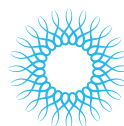
PERIODONTAL



RESTORATIVE



ORTHODONTIC



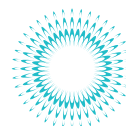
INSTRUMENT MANAGEMENT



ENDODONTIC



SURGICAL



ULTRASONIC SCALING



Hu-Friedy Mfg. Co., LLC: 3232 N. Rockwell St. | Chicago, IL 60618 | USA
Telephone: 1-800-Hu-Friedy (1-773-975-6100) | Website: Hu-Friedy.com

©2017 Hu-Friedy Mfg. Co., LLC. All rights reserved. The contents of this Product Catalog including, but not limited to, all text, photographs and graphics, are the sole and exclusive property of Hu-Friedy Mfg. Co., LLC and may not be copied, reproduced or distributed without prior written permission. HF-654/0617

Hu-Friedy