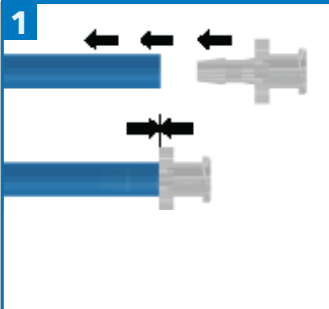


# Sterisil® Straw V2

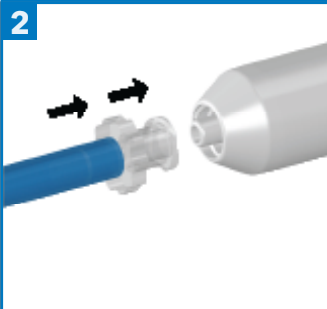
## Quick Install Guide

Remove dental bottle and cut pre-existing pick-up tube to length. Proper length is achieved when the Straw is connected to the pick-up tube and extends 1/4" from the bottom of the bottle.

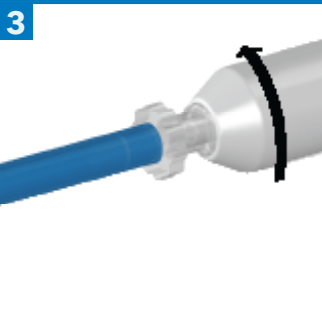
Push the barbed end of the Luer Lock into the pick-up tube



Insert the wide end of Luer Lock into the Straw.



Turn the Sterisil Straw to the right and hand tighten until connection is snug



**TO REMOVE:**  
Turn to the left.

