

---

# **ADC-01**

## **Portable Dental Chair**

---

**AseptiChair**



**OPERATION MANUAL &  
PARTS LIST**



## ! SAFETY PRECAUTIONS

*Aseptico accepts no liability for direct or consequential injury or damage resulting from improper use, arising in particular through the non-observance of the operating instructions, or improper preparation and maintenance of this product.*

To prevent injury to people and damage to property, please heed relevant warnings and remarks. They are marked as follows:

- **WARNING:** Serious injury or death may result if ignored.
- **CAUTION:** Damage to property or the environment may result if ignored.
- **NOTE:** Important additional information and hints.

▲ **WARNING:** Use for intended purposes only. Failure to observe the operating instructions may result in the patient or user suffering serious injury or the product being damaged, possibly beyond repair. Before using this product, make sure that you have studied and understood the operating instructions.

▲ **WARNING:** To avoid tipping hazard, never sit on the edge of the seat — always sit in the center of the seat.



▲ **WARNING:** Always use the chair on a hard flat surface.

▲ **WARNING:** The chair must be unoccupied when making height adjustments to the chair.

▲ **CAUTION:** Before using the Chair, ensure that the leg adjustment pins have been fully inserted through the adjustment holes in the legs.

▲ **CAUTION:** Do not alter the chair assembly.

▲ **CAUTION:** All repairs are to be performed by authorized service personnel only.



Advena Ltd  
Tower Business Centre, 2nd Flr,  
Tower Street, Swatar, BKR 4013  
Malta

## Congratulations!

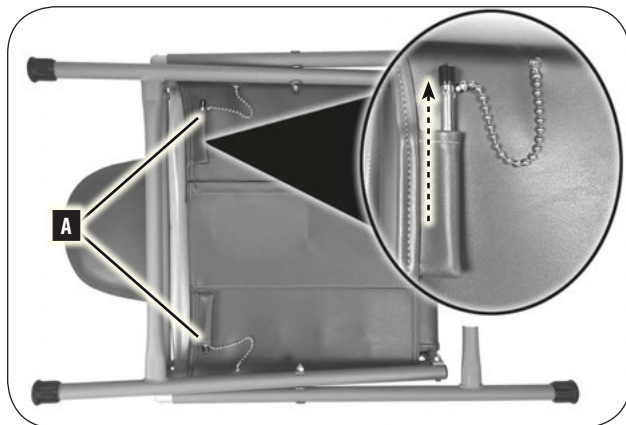
Your new Aseptico ADC-01 portable chair is the finest manually adjustable chair available to the dentistry and medical professions.

### Features include:

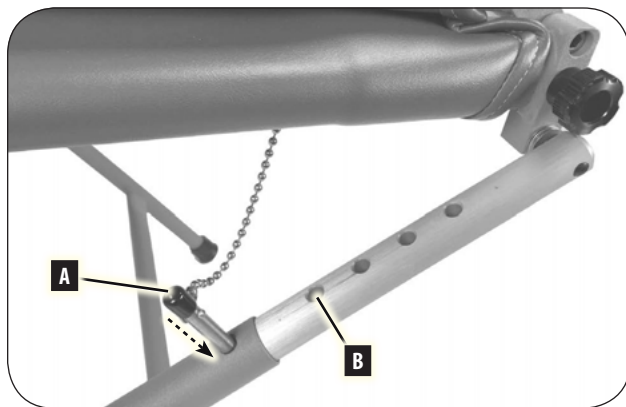
- Quick setup and disassembly
- Chair seat height adjustable from 11" to 22" (28 to 56 cm)
- Backrest and footrest each adjustable from vertical to horizontal
- High-strength steel frame
- Replaceable rugged vinyl covering
- Color option: Gray, Blue, or Red
- Chair is designed for a 300 lb (136 kg) maximum load
- Chair weighs 30 lb (13.6 kg)
- Padded carrying case with handles
- Made in the USA

## CHAIR SETUP

1. **ADJUSTMENT PINS** – Remove the leg adjustment pins from their storage pouches **A** underneath the chair seat, then place the chair feet down on the floor.



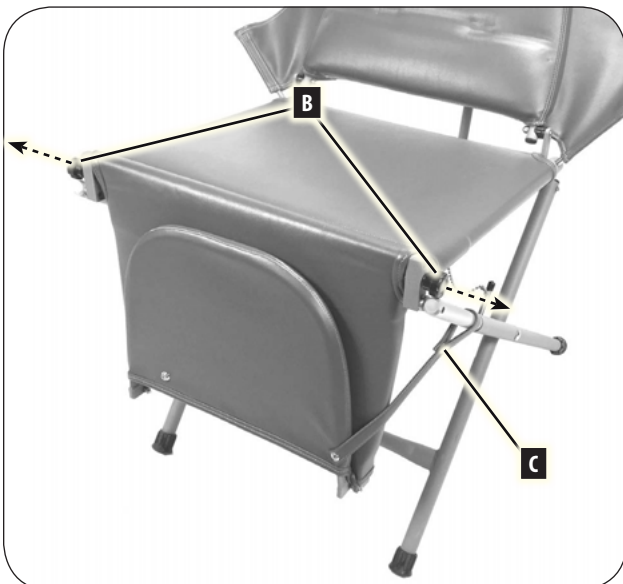
2. **CHAIR HEIGHT** – Put your toes on the tips of the chair legs to hold them down, then lift up on the chair to extend the legs to the desired height. Insert the leg adjustment pins **A** through chair leg tubes and into one of the 5 holes on the adjustment links **B** on both sides of the chair.



- 3. LEG PANELS (HORIZONTAL POSITION)** – Unfold the leg and foot panels **A** of the chair and they will automatically stop in the horizontal position.



- 4. LEG PANELS (VERTICAL POSITION)** – Start with the foot panel **A** folded closed on top of the leg panel. Pull out on the black knobs **B** on the sides of the chair to swing the panels down, then attach the strap **C** from the foot panel to the chair leg to keep the panels in place. Swing the panels up to lock back in the horizontal position.

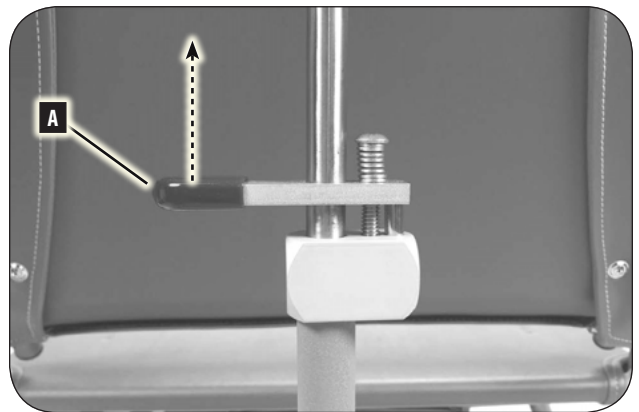


- 5. Insert right and left arm sling pins **A** into holes on the sides of the seat frame.**

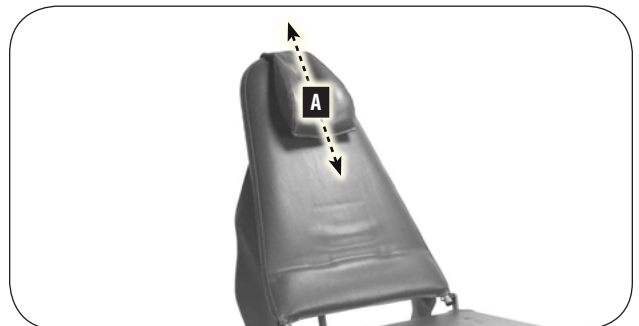


- 6. BACKREST** – To lower the backrest, lift up on the release lever **A** and push down on the backrest. To raise the backrest, simply lift up on the backrest.

**CAUTION:** Completely support the patient's weight before lowering the backrest.



- 7. HEADREST** – Adjust the headrest **A** by pulling on the straps from the rear.



## COLLAPSING THE CHAIR



**WARNING:** *Never force the chair into the collapsed position. Forcing the chair down without releasing the backrest adjustment lever may bend the adjustment assembly and will void the warranty.*

1. Fold toe and then leg panels onto seat as it was originally stored.
2. Pull arm slings out of the holes in the chair frame.
3. Put your toe onto one of the front chair legs and lift up slightly on the seat, then remove height adjustment pins. While supporting chair weight, let the chair fold down toward the floor.
4. As the chair folds down, release the backrest adjustment lever until the chair collapses completely. Rotate the chair up onto one side and insert the leg adjustment pins into their storage pouch underneath the chair seat.
5. Fold the arm slings and headrest onto the chair and place folded chair into carrying case.

## CLEANING

Although bleach, when diluted to <10% and wiped off immediately could be used, it is not recommended. The use of barrier covers and mild cleaning solutions is recommended as the primary asepsis approach on chair and stool upholstery instead of relying on chemicals. The use of barriers greatly extends the life of chair and stool upholstery and can be replaced between patients.

## WARRANTY

Aseptico Inc. warrants this product against defects in material or workmanship for a period of two (2) years, from date of original invoice. Some handpieces are warranted for one year under the same conditions. Other handpieces and expendable components, such as air turbines and light bulbs, are covered by shorter warranty periods, or have no warranty. Aseptico's sole obligation under product warranty is (at its sole option and discretion) to repair or replace any defective component or product in part or whole. Aseptico Inc. shall be the sole arbiter of such action.

In the event of alleged defect under warranty, the purchaser is to notify Aseptico's Customer Service Department promptly. Customer Service will provide instructions, usually directing that the product be returned for service. Shipment to Aseptico and the cost thereof is always the responsibility of the purchaser.

Accidental misuse, inappropriate installation, or failure to perform directed maintenance voids the warranty. Deliberately defacing, modifying, or removing the serial number voids the warranty.

Aseptico Inc. does not assume, under this warranty, any risks or liabilities arising from the clinical use of its products, whether or not such use involves coincidental utilization of products manufactured by others.

## SYMBOL DEFINITIONS



Consult Instructions For Use



Caution – Consult Accompanying Documents



Manufacturer



Authorized European Representative



Serial Number



Part Number

## SPECIFICATIONS

### Dimensions:

Chair (Folded): 37" W x 23" L x 9.5" H (94 cm W x 58.2 cm L x 24.1 cm H)

Chair (Extended): 72" W x 28" L x 46" H (182.9 cm W x 71.2 cm L x 116.8 cm H)

Soft carrying case: 38" W x 24" L x 11" H (96.5 cm W x 61 cm L x 27.9 cm H)

### Capacity:

300 lb (136 kg)

### Range of Seat Positions:

Minimum Seat Height: 11" (27.9 cm)

Maximum Seat Height: 22" (55.9 cm)

### Weight:

Chair only: 30 lb (13.6 kg)

Chair in soft carrying case: 34.5 lb (15.6 kg)

### Color Option:

Gray, Blue, or Red

### Manufacturer



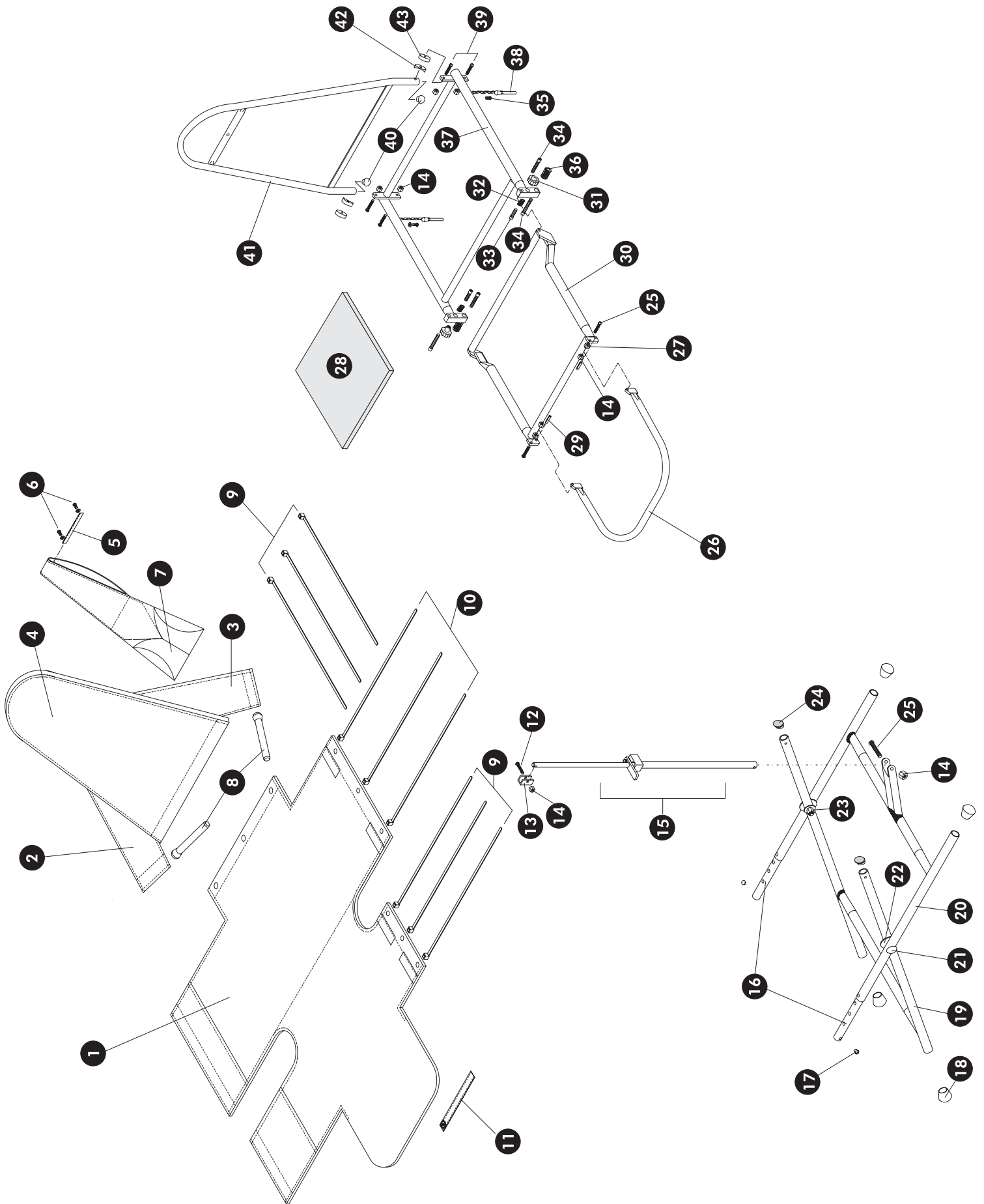
Aseptico Inc  
8333 216 St SE  
Woodinville  
WA 98072  
USA

INFORMATION CONCERNING THE ACCURACY AND PRECISION OF THIS PRODUCT MAY BE OBTAINED UPON REQUEST BY CONTACTING ASEPTICO AT THE ADDRESS SHOWN ON THIS PAGE.

# ADC-01

	PART	PART NUMBER	QTY
1	Seat Cover Assembly	460451 (Gray) 462551 (Blue) 460451-01 (Red)	1
2 3	Armrest Right/Left	460447 (Gray) 462550 (Blue) 460447-01 (Red)	2
4	Cover, backrest	460462 (Gray) 462537 (Blue) 462588 (Red)	1
5	Strap, headrest	460449 (Gray) 462538 (Blue) 461847 (Red)	1
6	Screw, #8x5/8" Chrome SEMS	510239	8
7	Headrest, pillow assembly	460450 (Gray) 462549 (Blue) 462589 (Red)	1
8	Armrest support rod assembly	460444-08	2
9	Tie Wrap, 30"	510135	6
10	Tie Wrap, 13"	510134	3
11	Strap, leg	460448	1
12	C/S, 1/4-20x1" BtnSoc S/S	510294	1
13	Hinge, back support	460382-08	1
14	Nut, 1/4-20 Nyloc S/S	510296	8
15	Back Support Assembly	330088	1
16	Leg adjustment link	460097-08	2
17	Hole plug, 1/4" black	510201	2
18	Endcap, 1" domed	850026	4
19	Leg Assembly, inside	330099	1
20	Leg Assembly, outside	330101	1
21	Bolt, 5/16-18 Grade 5 carriage	510242	2
22	Washer, 5/16 Flat S/S	510266	4
23	Nut, 5/16-18 Nyloc S/S	510126	2
24	Endcap, 1" insert	510204	2
25	C/S, 1/4-20x1-1/4" BtnSoc S/S	510295	3
26	Toe Frame Assembly	330091	1
27	Nut, 5/16-18 hex S/S	510103	2
28	Foam, seat pad	460576	1
29	Spring Pin, 1/4x3/4" S/S	510251	2
30	Leg Frame Assembly, cmpl	330093	1
31	Knob, 5/16-18 insert cornet	850025	2
32	Spring, .420Dx.038Wx.875L comp.	510233	2
33	C/S, 5/16-18x1-1/4" S/S	510050	2
34	C/S, 5/16-18x1" S/S	510048	4
35	SMS, PanPhl #6 x 5/8" Tapping	510362	2
36	Washer, 5/16 SAE S/S	510107	8
37	Seat Frame Assembly, cmpl	330097	1
38	Pin, leg adjustment assembly	460445-08	2
39	C/S, 1/4-20x1-3/4" BtnSoc S/S	510027	4
40	Hole plug, 3/4" black	510263	2
41	Backrest Frame Assembly	330089	1
42	Spacer, 1/4ID x 3/4OD Coved	510261	2
43	Spacer, 1/4ID x 3/4OD x .250 thick	510379	2
Not Shown	Case, carrying w/handles	410193	1
Not Shown	Backrest Assembly, cmpl	330090	1

# ADC-01





8333 216th Street S.E. Woodinville, WA 98072  
P.O. Box 1548 • Woodinville, WA 98072-1548  
(425) 487-3157 • (800) 426-5913  
[www.aseptico.com](http://www.aseptico.com) • [info@aseptico.com](mailto:info@aseptico.com)