

## Matrix Buttons instructions.



### Recommended Materials:

- Ethylacrylates
- Composites
- Light cure materials  
(methacrylates may also be used)

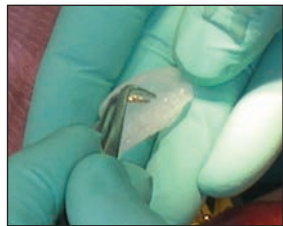
2

After anesthesia is administered, remove button from water bath. While using “wet” gloves to avoid sticking, roll button into an oblong ball. Press down on the occlusal surface. (Keep occlusal thin to enable flexing matrix to open later for removal of temp.) Then roll down to gingiva and press into undercuts.



Patient may also occlude in soft button. Buccal and lingual walls will need to be recompressed.

**Note:** Do not form occlusal, buccal and lingual sides at the same time.

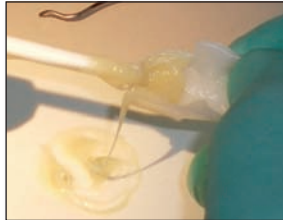


3

Remove button with cotton pliers... clean and dry.

4

After prepping, try on matrix. After seating has been checked, remove and inject bisacryl or hand mix and fill in with spatula; then seat.



## Get great results with MatrixTemp.

### When working with acrylics...

With powder and liquid acrylics, the separating medium must be lightly coated on internal surface of matrix to allow removal. Mix in dappen dish until doughy, place and seat. Remove in rubber phase or wait until final set, lifting it on and off the prep...then peel matrix away.



**Note:** If extra bulk is needed for margins, spring matrix open on buccal and lingual.

## How to use Matrix Buttons for anterior laminate temporaries.

1. Soften button, adapt over facial and incisal of tooth or teeth to be prepared (for multiple teeth two buttons may be joined.) Cool for 20 seconds or until white.
2. After laminate prep and impression are completed, lightly brush separating medium into matrix. Acid-etch spot on incisal facial, apply bonding liquid to that spot. Then place composite of choice in matrix, seat and lightly cure. Lift off matrix and remove flashing.

### Helpful Hints:

- If tooth is heavily fractured, reform with rope wax, Vaseline the area and adapt button.
- Use two buttons for bridges. Place red rope wax in pontic space, apply Vaseline and form matrix.
- After tooth is prepped and the matrix is filled with temporary material, have the patient bite down to ensure that the temporary is completely seated.

### Alternative Functions:



Insulate sensitive teeth



Anterior bruxing appliance

Go to [advantagedentalinc.com](http://advantagedentalinc.com) to see Dr. Joe Pelerin's instructional video on the Matrix Buttons procedure.  
Also, learn more about other Advantage Dental products:

- [MatrixTemp](#) • [ThermTray1](#)
- [Hemaseal & Cide with chlorhexidine](#)



**AdvantageDental Products, Inc.**

4498 Klais Dr., Clarkston, MI 48348 • 800.388.6319

B01.03 1009

[advantagedentalinc.com](http://advantagedentalinc.com)