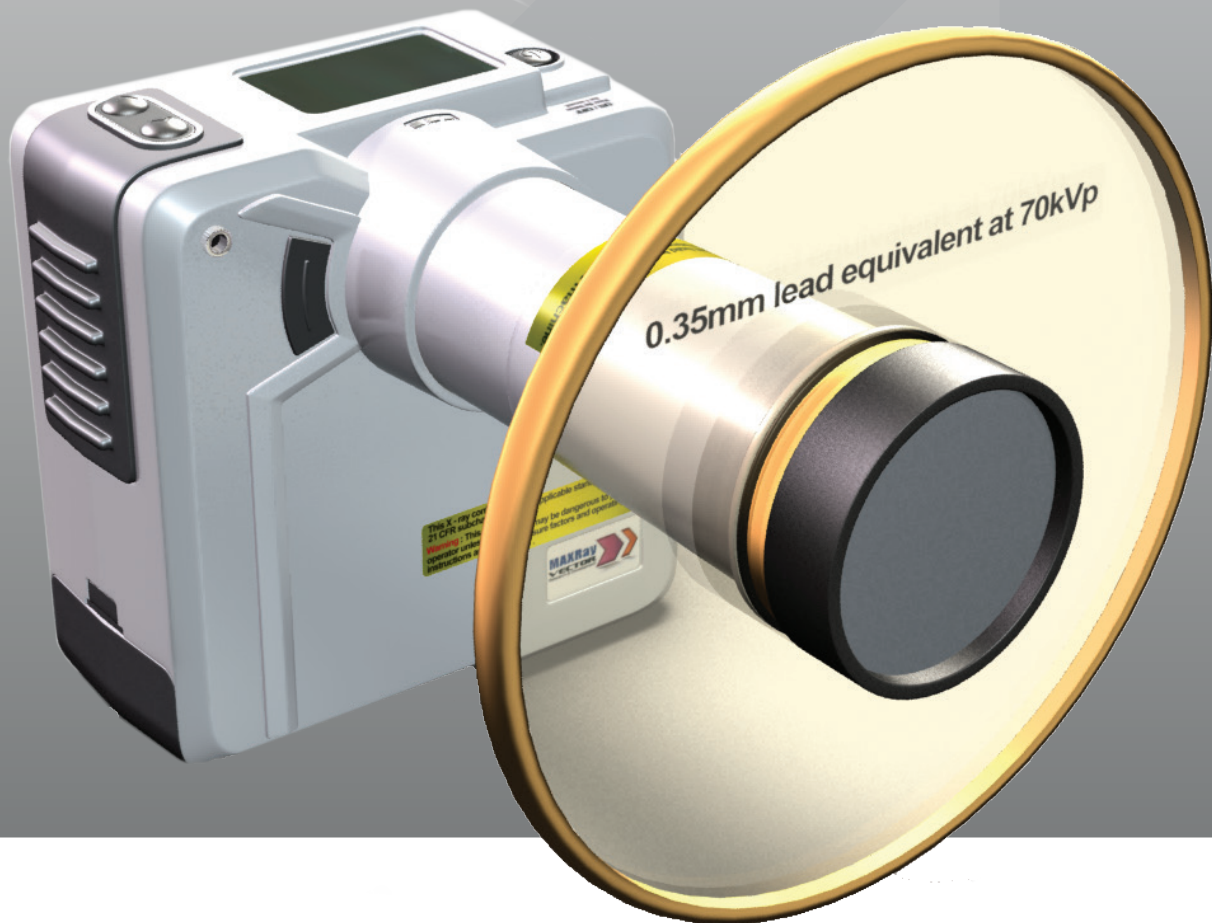




MAXRAY
MOBILE X-RAY SYSTEMS



IRIDIUM DENTAL



THE MAXRAY HAND-HELD X-RAY
TAKES DENTAL RADIOGRAPHY TO
A WHOLE NEW LEVEL.

MOBILITY. VALUE. SAFETY.

MOBILITY

THE X-RAY THAT GOES ANYWHERE

LIGHTWEIGHT

- At only 4.4lbs, MaxRay is lighter than the competitors



AVAILABLE OPTIONS:

TABLET PC MOUNT

- Create a full-self-contained digital system with X-Ray, Software, Sensor and Tablet PC. Take X-rays on the go—anywhere!

CARRYING CASE + STRAP

- Eliminate accidental drops with our exclusive optional carrying case and strap.
- Removes stress off user's arms for less user fatigue especially when doing FMX.

POWER TRANSFORMER

- Forgot to charge the battery? Plug in the optional power adapter directly into the power plug in and continue to take X-rays.

MOBILE STAND

- Make your hand-held into a mobile X-ray with our new rolling stand with tablet mount.



VALUE

THE INTERSECTION OF PRICE + QUALITY

LONG-LIFE LI BATTERY

- The best battery technology available. Take over 300 shots on one battery charge; compare to other systems that only take 100 per charge.

TOSHIBA X-RAY TUBE

- The best quality X-Ray tube available. Same tube as in many wall mount machines. Compare durability to lower quality tubes made in China.

OIL COOLED VS. AIR COOLED

- Just like your wall mount units, the MaxRay features an oil-cooled tube. Oil cooling provides faster disbursement providing for faster recovery and longer lasting tubes.

SAVE THOUSANDS

- Compared to national brands, our unit costs thousands less!

HAND-HELD vs. WALL MOUNT

Save thousands when equipping a new office with MaxRay hand-held X-Rays:

- **Eliminate multiple X-ray units**
- **Simplify your design and reduce your cabinet cost**
- **Eliminate between operator shielding***

*check with your state regulatory office

SAFETY

LOW DOSE SYSTEM

- The MaxRay produces significantly less radiation than wall mount units. Ideal for instances such as Pedo, Endo or Oral Surgery when the operator must be in the room to position the sensor or secure the patient.

FDA APPROVED

- Meets all FDA standards for hand-held use.

EXTRA LONG CONE

- Mandated by most states. The permanently attached, extra-long cone protects both the operator and the patient.

LEAD INFUSED BACK SCATTER SHIELD

- Mandated by most states. Shield prevents back-scatter to protect the operator.

DOUBLE LEAD SHIELDING

- Prevents X-ray leakage from the machine and tube area.

DENTAL X-RAY RADIATION COMPARISON

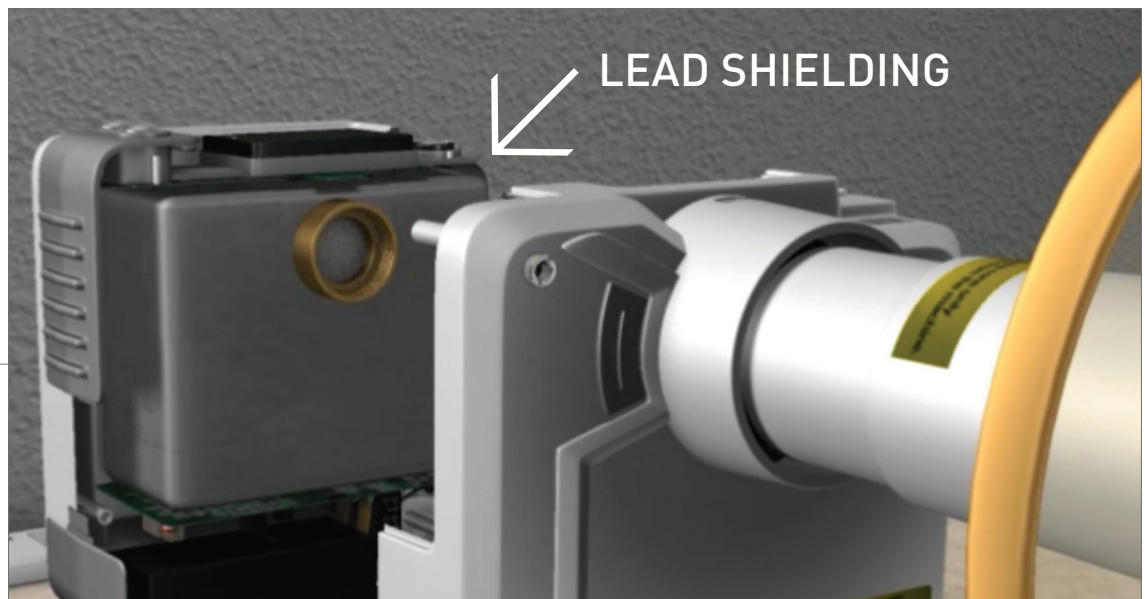
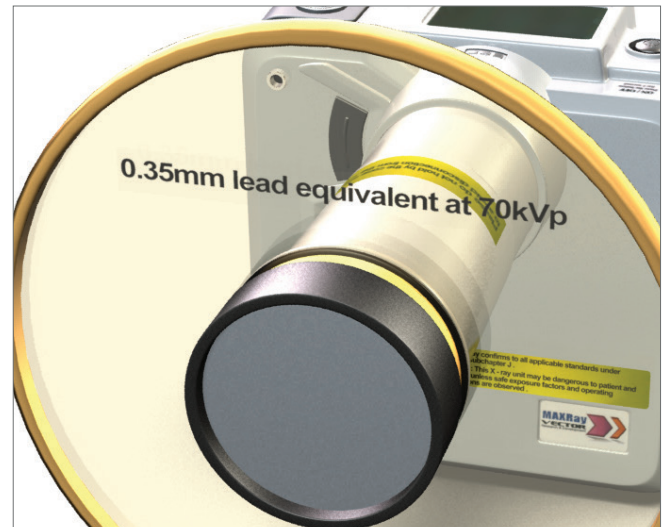
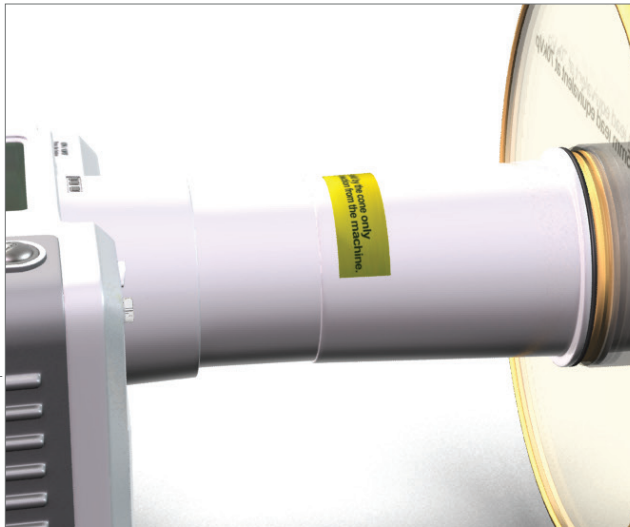
EXPOSURE IN MILLIREMS)

CHEST X-RAY: 10-40 mrem

5-HOUR AIRPLANE FLIGHT: 4 mrem

TRADITIONAL DENTAL X-RAY: 1 mrem

MAXRAY HAND-HELD: .09 mrem



ACCESSORIES



PICTURED:

1. LEAD-INFUSED SCATTER SHIELD
2. NECK STRAP WITH HOLSTER & BATTERY POUCH
3. AC ADAPTER FOR DIRECT CONNECTION
4. INTERNAL BATTERY & CHARGER

ALSO AVAILABLE:

- **STARTER PACK:** NECK STRAP WITH HOLSTER & BATTERY POUCH, ADDITIONAL BATTERY
- **MOBILE MASTER KIT:** INCLUDES SENSOR AND APTERYX SOFTWARE, MAXRAY X-RAY MACHINE, IRIIDIUM REX2 PREMIUM SENSOR (1.5), 8" LENOVO TABLET AND MOUNTING KIT, APTERYX UV LITE
- 8" LENOVO (OR EQUIVALENT) TABLET
- 8" TABLET MOUNTING KIT
- MOBILE ROLLING STAND
- REMOTE SWITCH WITH WIRE
- INTERNAL BATTERY ONLY
- OPERATOR X-RAY APRON & HOLSTER STRAP