



SPEED^{*} and POWER

Sani-Prime™

Next-generation Disinfectant

Protect your patients, staff, and facility with the only 1-minute surface disinfectant powered by ACCELOQUAT™ formulation.

Call on the **SPEED** and **POWER** of Prime at pdihc.com/Prime

*As compared to surface disinfectants that require longer than a 1-minute contact time to disinfect.



INTERVENTIONAL CARE PATIENT CARE ENVIRONMENT OF CARE

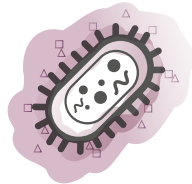
What is ACCELOQUAT

ACCELOQUAT formulation is a next-generation proprietary blend of quaternary ammonium, isopropyl alcohol, and ethanol that delivers **SPEED** and **POWER** in the fight against HAI's.

ACCELOQUAT formulation in action

Disrupts

Attaches to pathogen cell surface and disrupts the cell wall and inner membrane



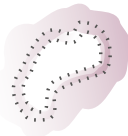
Penetrates

Pierces the cell's protective barrier, leading to intracellular protein leakage and dysfunction



Destroys

Lyses pathogen leading to cell death



Rapid disinfection and cleaning

Sani-Prime disinfectants offer a true 1-minute bactericidal, fungicidal, virucidal, and tuberculocidal that reduce the time to disinfect and turnover a room.

Power to protect

Effective against over 50 microorganisms, including:

17
MDROs

- 5 MRSA strains
- 8 CRE strains
- 1 VRE
- And 3 others

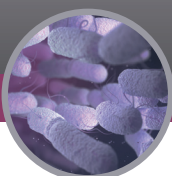


Estimated Annual HAIs: 722,000¹

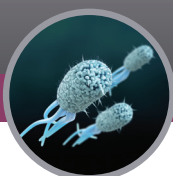
9 Pathogens Caused 2 of 3 HAIs²



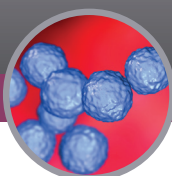
Staphylococcus aureus



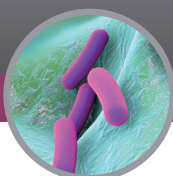
Klebsiella pneumoniae or *K. oxytoca*



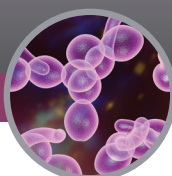
Escherichia coli



Enterococcus species



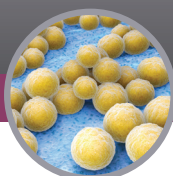
Pseudomonas aeruginosa



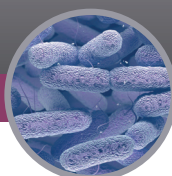
Candida species



Streptococcus species



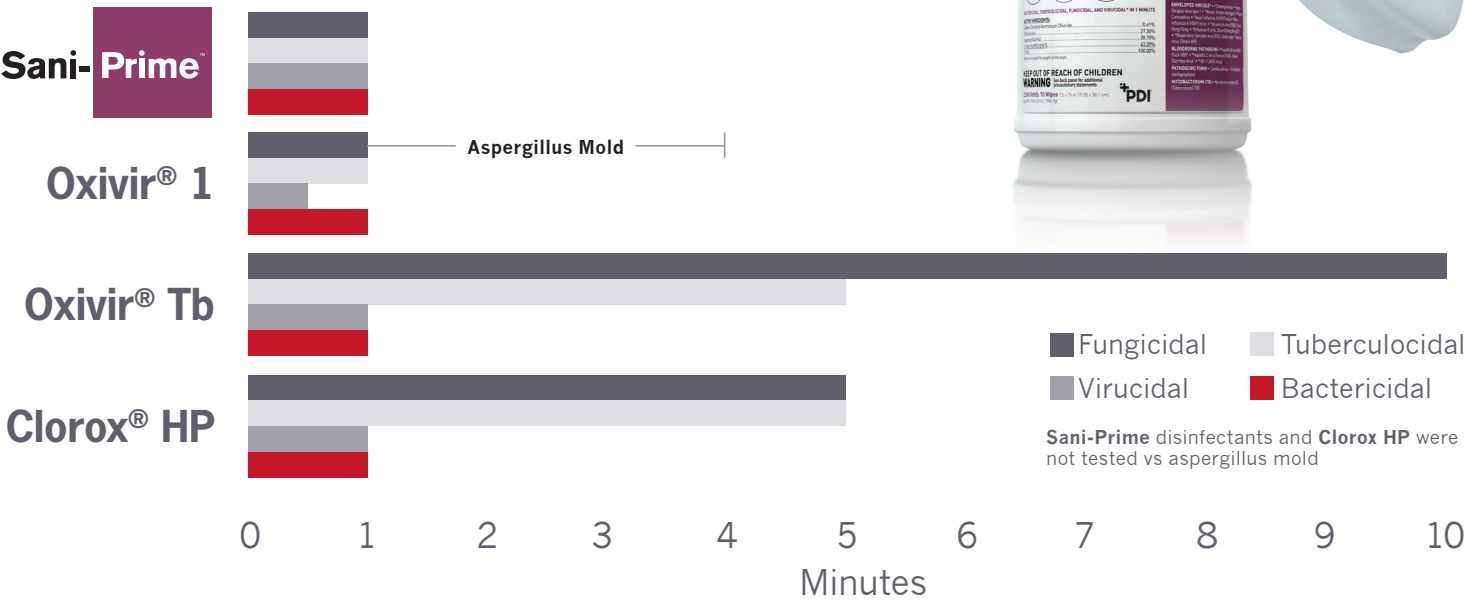
Coagulase-negative *Staphylococcus* species



Enterobacter species

Sani-Prime™ KILLS THEM ALL

True 1-Minute Overall Contact Time



Clorox Healthcare® and Clorox® HP are registered trademarks of The Clorox Company. Oxivir® is a registered trademark of Diversy, Inc.

References: 1. Centers for Disease Control and Prevention. Healthcare-associated infections (HAIs): Data and statistics. <http://www.cdc.gov/HAI/surveillance/index.html>. Updated January 12, 2015. Accessed June 11, 2015. 2. Magill SS, Edwards JR, Bamberg W, et al. Multistate point-prevalence survey of health care-associated infections. *N Engl J Med*. 2014;370:1198-1208.

Call on the SPEED and POWER of Prime at pdihc.com/Prime



INTERVENTIONAL CARE PATIENT CARE ENVIRONMENT OF CARE

Sani-Prime™

PROTECT YOUR PATIENTS, STAFF, AND FACILITY

Call on the SPEED and POWER of Prime
at pdihc.com/Prime

1-Minute Intermediate Level Disinfectant

	REORDER NO.	WIPE SIZE	WIPE COUNT	CASE PACK	TI/HI	CASE WEIGHT	CASE CUBE
Sani-Cloth® Prime Germicidal Disposable Wipe							
Large Canister	P25372	6 x 6.75"	160	160/can, 12 cans/case	10/3	16 lbs	1.410 ft³
Extra Large Canister	P24284	7.5 x 15"	70	70/can, 6 cans/case	10/4	27.84 lbs	1.010 ft³
Large Individual Packet	H06182	5 x 8"	50	50/box, 10 boxes/case	20/4	7.99 lbs	0.540 ft³
Extra Large Individual Packet	U13195	11.5 x 11.75"	50	50/box, 3 boxes/case	24/3	8.65 lbs	0.500 ft³
Sani-Prime™ Germicidal Spray							
Spray	X12309	n/a	n/a	32 oz/bottle, 9 bottles/case	12/4	19.24 lbs	0.828 ft³

Other formulations available.



Visit pdihc.com for more info.

©2018 PDI PDI05189927
Two Nice-Pak Park, Orangeburg, New York 10962
T: 800-444-6725 W: pdihc.com



INTERVENTIONAL CARE PATIENT CARE ENVIRONMENT OF CARE