

HANDLER



 REDWING BRAND SINCE 1920



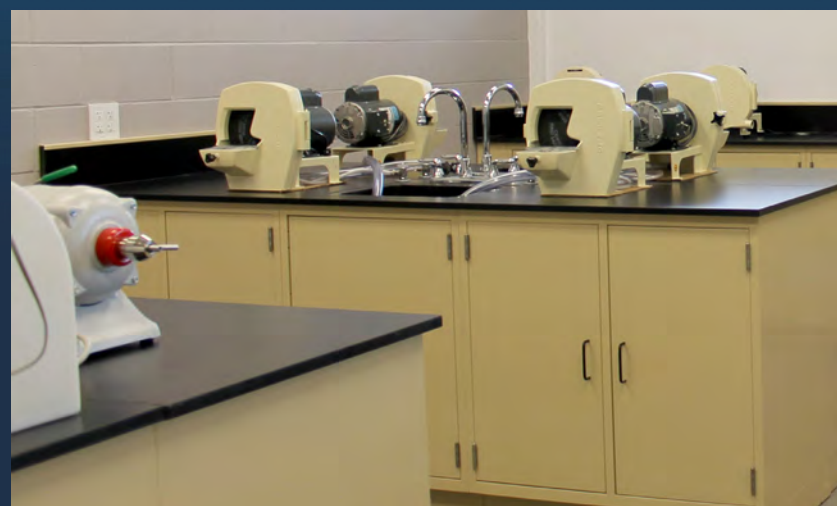
LABS

Layout & Technology
Solutions Guide



Complete workflow design
with work stations, cabinetry
and platforms for today's lab

COMMERCIAL
EDUCATIONAL
INSTITUTIONS
GOVERNMENT



TECHNOLOGY LABS
PRODUCTION LABS
DOCTOR'S OFFICE LABS
PRIVATE LABS

Catalog and custom work stations
built to your specifications. Contact
HANDLER for a free consultation.





SMALL FULL SERVICE LAB

Benches Specially Designed for Dental Lab Operations

Why HANDLER Products?

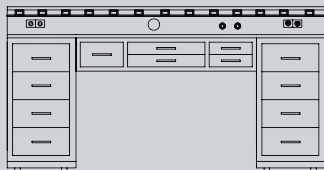
- ✓ Trusted & Reliable
- ✓ Little or no install on equipment
- ✓ Guaranteed
- ✓ Durable Products
- ✓ Well Known RED WING Brand

Why HANDLER Products?

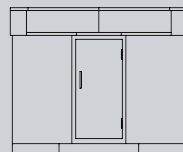
- ✓ Customer Service & Support
- ✓ American-Made
- ✓ Customized Solutions
- ✓ 96 Years of Lab Experience

VISIT HANDLERMFG.COM FOR
A FULL LINE OF DURABLE &
AFFORDABLE LAB BENCHES
& WORK STATIONS

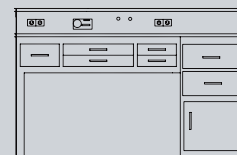
2-Technician Corner Work Station



311 BENCH



253 CORNER CABINET



213 CERAMIST BENCH

PRO TECH *Lite* PTL-215SP

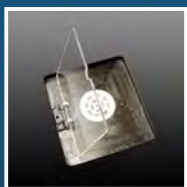
PTL-215SP is engineered to provide affordable and durable functionality with style and performance. Standard with the PTL-215SP is a full 24" deep work surface free of obstacles for maximum work area and a 16" x 12" work surface protector. The list of standard components is long.

The PTL-215SP Features:

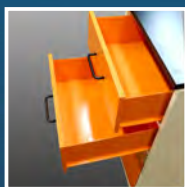
- All 18 gauge welded steel construction powder coated paint finish
- Spacious 6" riser or chase to run air, gas and electric lines
- Totally enclosed, powerful and pre-wired quiet 62-II Dust Collector
- Double tier shelf to hold cases conveniently
- Six outlet pre wired power strip
- 30" heavy duty swivel energy efficient 1800 lumens LED bench light consumes less than ¼ Amp of power
- Gas valve
- Retractable air line with pressure regulator and blow gun
- Removable 16" x 12" stainless steel work surface protector
- Laboratory grade solid, smooth Resistop© work surface
- Two suction inlet options
 - Bench top 3" suction inlet with blast gate
 - In-drawer suction complete with protective acrylic shield and padded comfort arm rest
- Four drawers for storing tools and equipment
- Easy set-up and assembly
- Dimensions: 42"W x 30"D x 32" H work surface



"THE POWER OF 1" PTL-1 WORK STATION For Any Lab Application



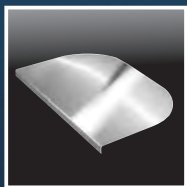
Down draft
dust collection
portal & shield



Deep draws
for storage



Pop-up duplex
power supply
with 2 USB ports



Stainless steel
surface protector



Powerful, quiet 550A
dust collector with
foot switch included.





211 TECH-RITE BENCH

A five-drawer technician's bench with resistop. Resistop is similar to man-made slate. Standard color for Resistop is black. Color tops are available at an additional cost. Built with four legs and leg levelers, duplex electrical outlet, suction inlet and knock-outs for air and gas valves. Finished in baked durable coating.

Shipping Weight: 170lbs (77.1Kg)

Unit Dimensions:

42" Wide x 24 1/2" Deep x 32"
[107cmx17cmx15cm], mounted rear.
to work surface.

Note: Gas & Air valves at additional charge.

213 Ceramist Bench

This seven drawer bench is designed particularly for the ceramist. In addition to the two larger side drawers which will accommodate large porcelain jars, its side cabinet contains a hinged door and compartment for a vacuum pump or other accessories. The side cabinet is shipped for assembly on the right side of the bench. Built of heavy gauge sheet steel, the Tech-Rite Ceramist Bench is shipped complete with legs, duplex electrical receptacle, suction inlet and knock-outs for air and gas valves. Finished in baked, durable coating with Resistop tops. Specify placement of side cabinet - Left or Right.

Shipping Weight: 270lbs (122.4Kg)

Unit Dimensions:

58" Wide x 24 1/2" Deep x 32"
to work surface.
[147cm x 62cm x 81cm], mounted rear.

Bench Includes a high riser:

58" Wide x 61/2" Deep x 6" High
[147cm x 17 cm x 15.2cm] mounted rear



215 Pedestal Bench

This unit containing a duplex receptacle, suction inlet and knock-outs for air and gas valves on both sides. Bench finished in baked, durable coating. A two technician pedestal bench contains five drawers for each technician. Benches are mounted fact to face, supported by 42" Wide x 17 3/4" deep pedestal with common 13" riser top [107cm x 45cm x 33cm]. Constructed of heavy gauge sheet steel. Supplied with Resistop tops.

Shipping Weight:: 370lbs (167.8Kg)

Unit Dimensions:

42" Wide x 49" Deep x 32"
to work surface.
[107cmx124cmx81cm], mounted rear.

Note: All benches may be combined with additional benches to form a free standing island.



215WS Pedestal Bench

A two technician pedestal bench containing five drawers for each technician, as above. Bench also includes a 60U dust collector for two technicians, 2 fishmouths, flexible ducting, clamps, blastgates and 2 lighted remote switches mounted on vertical risers. Finished in a baked, durable coating and supplied with Resistop tops.

Shipping Weight:: 470lbs (204.1Kg)
Unit Dimensions:
42" Wide x 49" Deep x 32"
to work surface.
[107cmx124cmx81cm], mounted rear.

Note: All benches may be combined with additional benches to form a free standing island.



215SP Single Pedestal Bench

Five drawer single technicians bench with Resistop tops. Bench is supported by a single 11" Deep x 42" Wide [28cm x 107cm] single pedestal. The single pedestal bench is 42" Wide x 24 1/2" Deep x 31 3/4" to work surface. [107cm x 62cm x 81cm]. The 215SP contains a 42" Wide x 6 1/2" Deep x 6" high riser [107cm x 17cm x 15cm] mounted rear with one duplex receptacle, suction inlet and knock-outs for air and gas valves in the vertical riser.

This bench may be secured to the wall of the laboratory or installed as a free standing bench. May be combined with additional benches to form a free standing or wall mounted island of benches. Constructed of heavy gauge sheet steel and finished in a baked, durable coating.

Shipping Weight:: 190lbs (86.2Kg)
Unit Dimensions:
42" Wide x 24 1/2" Deep x 32"
to work surface.
[107cm x 62cm x 81cm], mounted rear.



231 Plaster Bench

A seven foot bench built for use as plaster bench. Bench contains one 35" [89cm] double door cabinet, one 24" [61cm] single door cabinet and one 24" [61cm] four drawer cabinet combined.

Cabinet top covered with Resistop, built-in 14" x 14" x 6 1/2" deep [36cm x 36cm x 17cm] stainless steel sink with chrome plated mixing faucet, and adjacent plaster (waste) chute. Bench constructed of heavy gauge sheet steel finished in a durable, baked coating. 231 shown above with optional stainless steel work surface.

Size: 83 3/8" Wide x 24" Deep (with 6" [15cm] rear riser) x 36 3/4" high [213cm x 60cm x 93cm] to work surface. Available with 6" high [15cm] backsplash in lieu of riser making bench 23 3/4" in depth [62cm].

AVAILABLE WITH EXTENDED LENGTH AND ALL STAINLESS STEEL TOP



Custom Stainless Steel Benches with built in sinks.



Shipping Weight: 475lbs [215.4 Kg]
Unit Dimensions:
83 3/8" Wide x 24 1/2" Deep x 36 3/4" high
[213cm x 62cm x 109cm] to work surface.
Available with 6" high
Note: Gas & Air valves at additional charge.



235 Casting/Soldering Bench

A seven foot long bench designed for casting and soldering. This bench consists of one 35" [90cm] double door cabinet, one 24" [61cm] single door cabinet and one 24" [61cm] single door cabinet with tool area above door lined with transite for placement of torches and tools. This cabinet's work surface is covered with Resistop material and contains a cut-out with casting well. Cabinet size: 84" Wide x 23 3/4" deep x 36 3/4" high [213cm x 58cm x 93cm] to work surface. Available with 6" [15cm] high riser in lieu of backsplash making bench 29" [73cm] in depth. The casting well sits 18" wide and 14" deep [43cm x 36cm]. Constructed of heavy gauge sheet steel and finished in a durable baked coating.

Shipping Weight:

460lbs [208.6Kg]

Unit Dimensions:

84" Wide x 24 1/2" Deep x 36 3/4" High
[213cm x 58cm x 93cm] to work surface.

Note:

Gas & Air valves at additional charge.



241 Double Door Cabinet

A 35" [90cm] wide double door cabinet built of heavy gauge sheet steel and covered with Resistop work surface. Full size doors provide complete access to enclosed area. Finished in durable, baked coating.

Size: 35" Wide x 23" Deep x 36 3/4" high
[89cm x 58cm x 93cm] to work surface.

A 6" [15cm] high riser may be ordered in lieu of backsplash making bench 29" [74cm] in depth.

Shipping Weight: 185lbs [83.9Kg]

Unit Dimensions:

35" Wide x 23 3/4" Deep x 36 3/4" High
[89cm x 58cm x 92cm]

Note: Gas & Air valves at additional charge.



245 Single Door Cabinet

An 18" [46cm] wide single door cabinet constructed of heavy gauge sheet steel with Resistop work surface. Complete access to cabinet interior is afforded by full size door.

Size: 18 1/8" Wide x 23" Deep x 36 3/4" High
[46cm x 58cm x 93cm] to work surface. May be ordered with 6" [15cm] backsplash in lieu of 6" riser making bench 23 3/4" [62cm] in depth. Cabinet finished in a durable, baked finish.

Shipping Weight: 115lbs [52.2 Kg]

Unit Dimensions:

18 1/2" Wide x 30" Deep x 36 3/4" High
[46cm x 76cm x 92cm]

Note: Gas & Air valves at additional charge.



253 Corner Cabinet

A Single door corner cabinet designed to be placed in a corner or abut adjacent 32" [81cm] high technician benches. Built of heavy gauge sheet steel with Resistop and coated in a durable, baked finish. Wall side - 32" [81cm], abutment side - 22" [56cm], door side - 14" [35.5cm], height - 31" [79cm]

Shipping Weight: 165lbs [74.8Kg]

Unit Dimensions:

32" Long x 23 3/4" Deep
with backsplash x 32" high
[81cm x 61cm x 81cm]

311 Master Technicians Bench

The ultimate bench for the accomplished technician. Constructed of heavy gauge sheet steel, this bench is 74" Wide x 24 1/2" Deep x 32" High to the work surface [188cm x 62cm x 81cm]. This bench contains thirteen drawers, a 36" [91cm] electrical strip, 3" [7.6cm] suction inlet, air and gas valves and a Resistop work surface.

Finished in a baked, durable coating. The work area is designed to provide maximum work space for supervision and teaching. Unit contains a 74" Wide x 6 1/2" Deep x 6" High [188cm x 17cm x 15cm] vertical riser mounted in rear of the bench.

Shipping Weight: 350lbs [158.7Kg]

Unit Dimensions:

74" Wide x 24 1/2" Deep x 32" High

[188cm x 62cm x 96cm] to the work surface.



243 Single Door Cabinet

A 24" [61cm] Wide single door cabinet built of heavy gauge sheet steel with Resistop top. Full sized door allows complete access to inside of cabinet. Size: 24 1/8" Wide x 29" Deep x 36 3/4" High [61cm x 74cm x 93cm] to work surface.

A 6" [15cm] backsplash may be ordered in lieu of riser making bench 23 3/4" [74cm] in depth.

Please specify color.

Shipping Weight: 130lbs [59Kg]

Unit Dimensions:

24 1/8" Wide x 23 3/4" Deep x 36 3/4" High [61cm x 63cm x 92cm]



247 Four Drawer Cabinet

This four drawer cabinet is manufactured of heavy gauge sheet steel and finished in a durable, baked coating. Each drawer is equal in size. Cabinet is 24 1/8" Wide x 29" Deep x 36 3/4" High [61cm x 58cm x 93cm] to work surface. Work surface covered in Resistop material. A 6" [15cm] backsplash may be ordered in lieu of riser making cabinet 24 1/2" [62cm] deep.

Shipping Weight: 160lbs [72.6 Kg]

Unit Dimensions:

24 1/8" Wide x 23 3/4" Deep x 36 3/4" High [61cm x 58cm x 92cm]



251 Corner Cabinet

A single door cabinet designed to be placed in a corner and abut modular benches on either side. Constructed of heavy gauge sheet steel and finished in durable, baked coating, this corner bench is compatible with either a backsplash or riser. Please specify when ordering.

Wall Side - 32" [81cm],

Abutment side - 22" [56cm]

Door side - 14" [35.5cm]

Height - 36 2/3" [92cm]

Shipping Weight: 190lbs [86.2Kg]

Unit Dimensions:

45 1/4" Wide x 39 1/16" Deep x 36 2/4" High [115cm x 99cm x 109cm] to work surface.



MULTI-TECHNICIAN DENTURE WORK BENCH

Customized Solutions

Custom Benches and Cabinets Built to Your Specifications Stainless Steel Tops with Raised Edge to Prevent Water Runoff Special Shelving for Storage or Holding Burnout Ovens Slide Out Trays Installed for Cabinet Curing Units or Other Needs

Full Service Solutions

Benches built fully loaded with equipment and accessories for efficiency and best practice work flow.



241F LAB STORAGE CABINET

Lab Storage Cabinet for Flammable and Combustible Liquids.
Colors are White, Red or Yellow



241T TOOTH CABINET

Multiple drawers allow you to keep tooth storage organized and separated for easy inventory

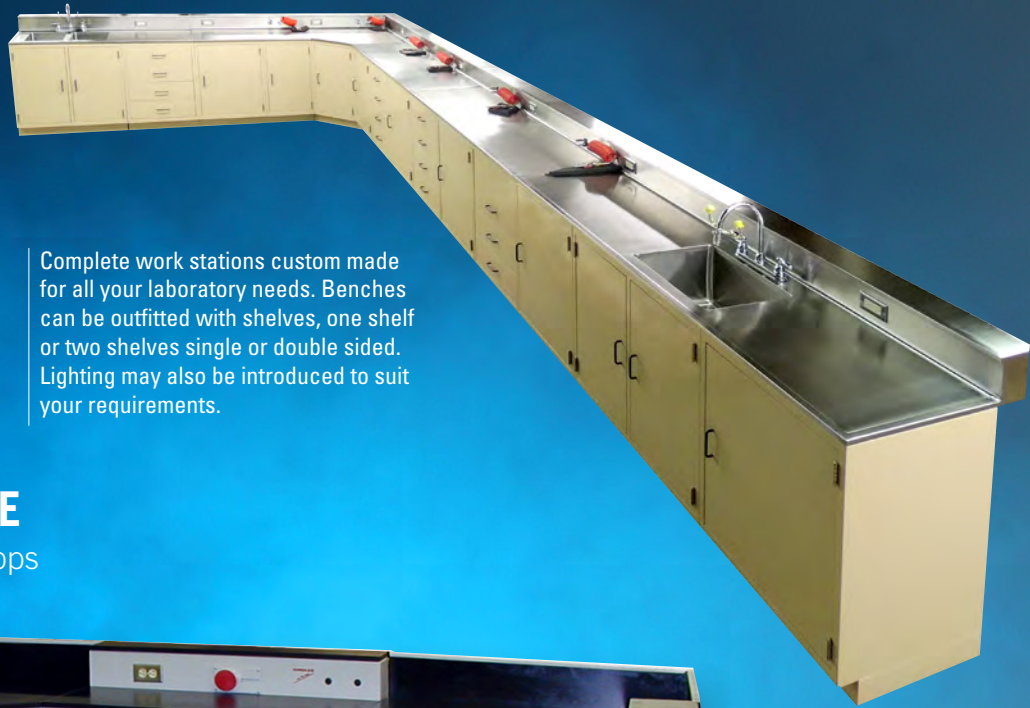
245TILT PLASTER CABINET

Tilt cabinet is the most safe and easy way to store and retrieve plaster cleanly and efficiently



CUSTOM AND UNIQUE LAB BENCH FEATURING IMPROVED WORK FLOW, SAFETY AND EFFICIENCY

Complete work stations custom made for all your laboratory needs. Benches can be outfitted with shelves, one shelf or two shelves single or double sided. Lighting may also be introduced to suit your requirements.



MULTI-STATION TECH RITE

Durable, Rugged Resistop® Countertops



CORNER WORK STATION

Model 213CWS

For added corner spaces in small labs.



Available in the following colors:





26105SSWC BOILOUT/CURING UNIT

Handler introduces a New Boilout/Washout/Curing Unit complete with powder coated cabinet. Built & designed by Handler THE NEW 26105SSWC will provide your prosthetics laboratory with years of service at almost 40% savings over competitive units. Vented cabinet with internal shield, Available with economical gas or electrical powered, Heavy duty recirculating pump, Four faucet washout-tank-turn on walk away de-wax dentures, partials and flasks. Additional faucet (P26105-30F) available to fill tanks. Curing unit holds 8 two flask compresses-16 flasks, Heavy gauge stainless steel for durability & functionality, Sinks built into stainless steel top with seamless design, Marine Edging keeps water from running off work surface, built by Handler in the U.S.A.

Shipping Wgt.: 350 lbs [158.8 Kg]

Unit Dimensions: 35" wide x 24" deep x 36 3/4" high [89 cm x 61cm x 93 cm]

FOR SPECIAL ORDER CURING, BOIL-OUT/WASHOUT UNITS built to your specifications, CALL HANDLER OR YOUR DISTRIBUTOR FOR DETAILS.

26101 - SINGLE CURING TANK

26103 - 3 CURING TANK CURING SYSTEM

26104 - SINGLE WASHOUT UNIT

26102SSWC CURING UNIT

The 26102SSWC is the ultimate curing device for processing multiple dentures properly and efficiently. This unit is manufactured of heavy gauge stainless steel with seamlessly integrated curing tanks, backsplash and marine edge to stop water from running off. The vented cabinet is heavy gauge steel with an oven cured powder coated finish. Each tank is insulated to retain heat and can hold up to 16 flasks for maximum productivity in the denture lab. The 26102SSWCEL model is electrically powered and has two 2Kw copper heating elements electrically controlled. Each heating element has a built in safety shut off. Please specify 208V, 220V or 240V when ordering. The unit can also be purchased for use with natural or propane gas, model 26102SSWCG. Each burner produces 7,500 BTU's. Also included with each unit is a lid for each tank and stainless steel flask trays.

Shipping Wgt.: 350 lbs [158.8 Kg]

Unit Dimensions: 35" W x 24" D x 36 3/4" H [89 cm x 61cm x 93 cm]



NEW!

26104 CURING & Wash out unit

- Denture curing, boil out and wash out in a single high grade stainless steel, seamlessly integrated tank and backsplash with marine edge to prevent water roll off
- This unit is manual fill, manual drain. Fill faucet is available, part number P26105-30F
- Must be installed by licensed electrician and licensed plumber.
- Exhaust hood model 236FH-2 available to extract fumes and odors out of the building
- Powder coated steel cabinet also available
- 26104 is powered by natural gas. Available in 220 volt electric also

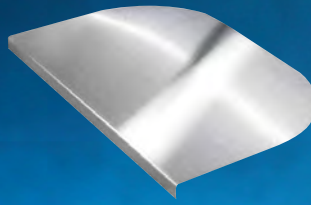


Shown in a stainless steel cabinet, sold separately



235CC CASTING WELL COVER

Increase your work space with a stainless steel cover over your casting well and keep your well covered when casting metals for added safety.



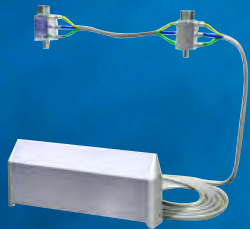
210SS WORK SURFACE

Sturdy stainless steel work surface protector.



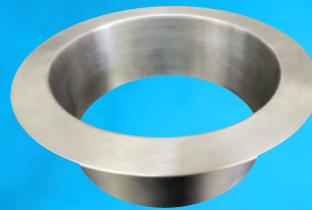
Ergonomic Arm Rest

Comfortable support to reduce fatigue.



231HF HANDS-FREE WATER CONTROL

keep your hands free of germs by using a kick plate to activate water flow in the lab



231WC WASTE CHUTE INSERT

Stainless steel waste chute insert helps direct the waste flow into the trash receptacle keeping the environment cleaner.

For over 90 years, Handler has not only been the source for durable, quality products, but it has established an excellent reputation for service as well. Over the years, our innovative products have saved technicians time and money and will continue to be Handler's future.

Handler has redesigned a hood to remove fumes and odors from laboratory processing. It is designed with a 610 CFM suction unit to remove all types of odors.

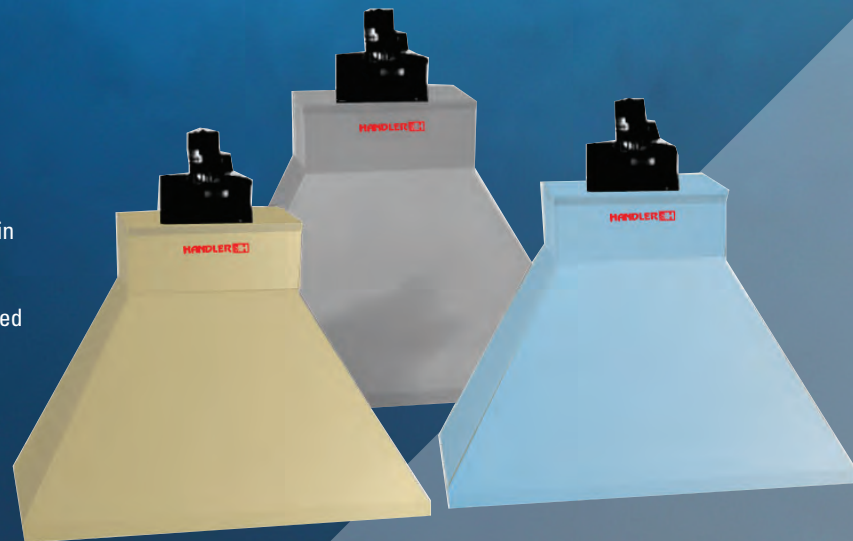
The Fume hood is built to be placed directly onto a studded wall, and the exhaust ducted into a suitable location outside your building. It's 18" deep by 42" wide by 39" high size makes it convenient to install in most laboratories.

The fume hood is constructed of heavy gauge sheet metal and finished in a silver grey baked coating.

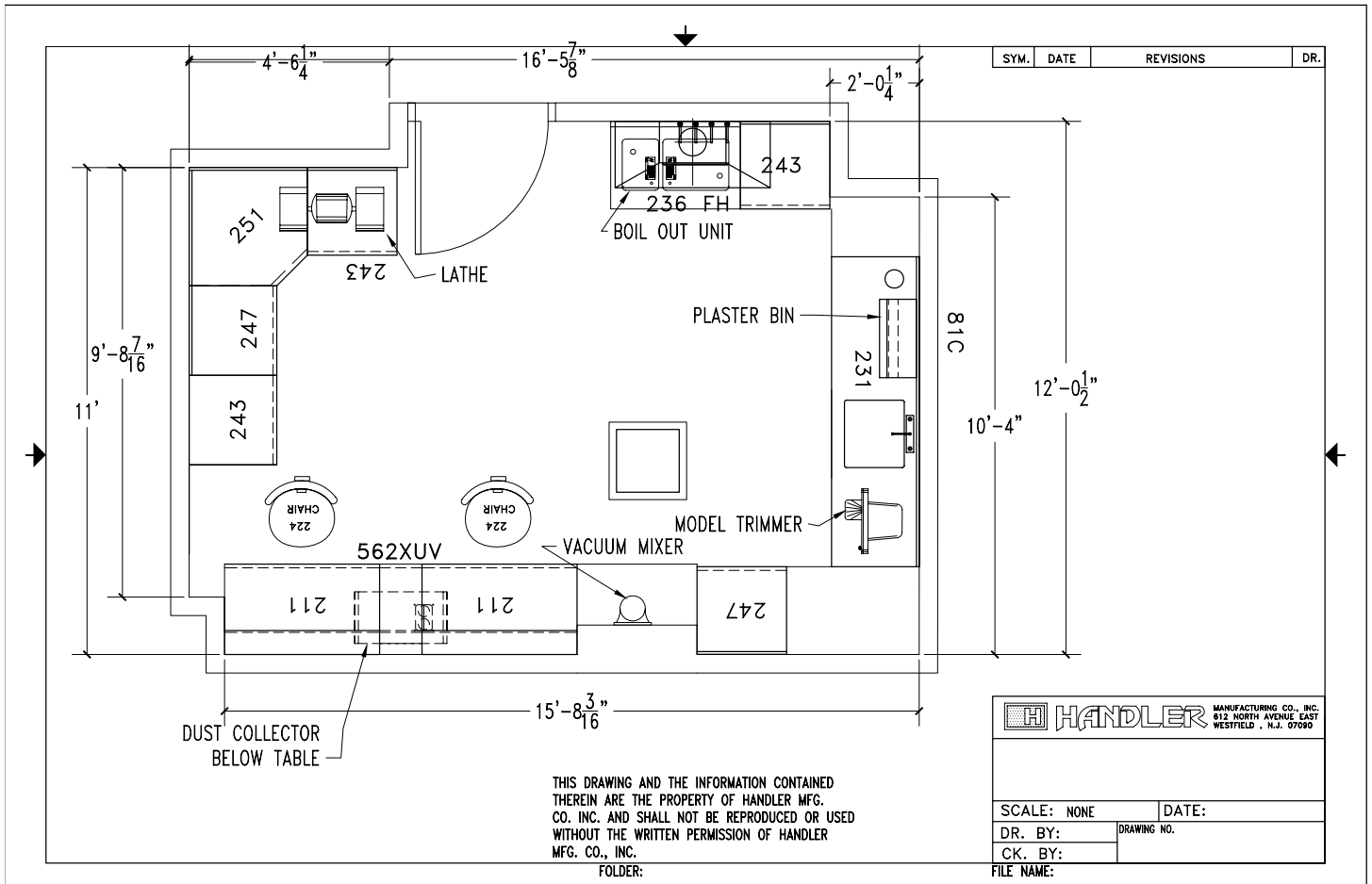
Shipping Weight: 100lbs [45.4Kg]
Unit Dimensions:
18" Deep x 42" Wide x 30" High
[46cm x 107cm x 99cm]

Note: Fume hoods with special dimensions and CFM ratings can be built to your specifications contact us for a quotation.

236 FUME HOOD

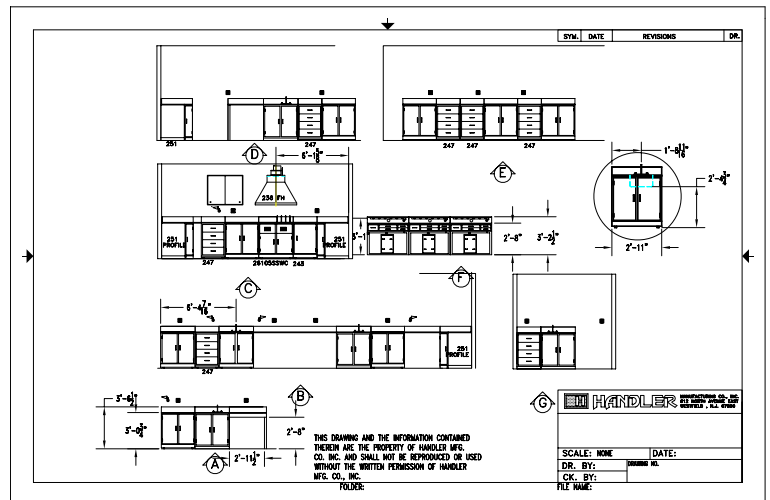


Laboratory Cut-Out Templates

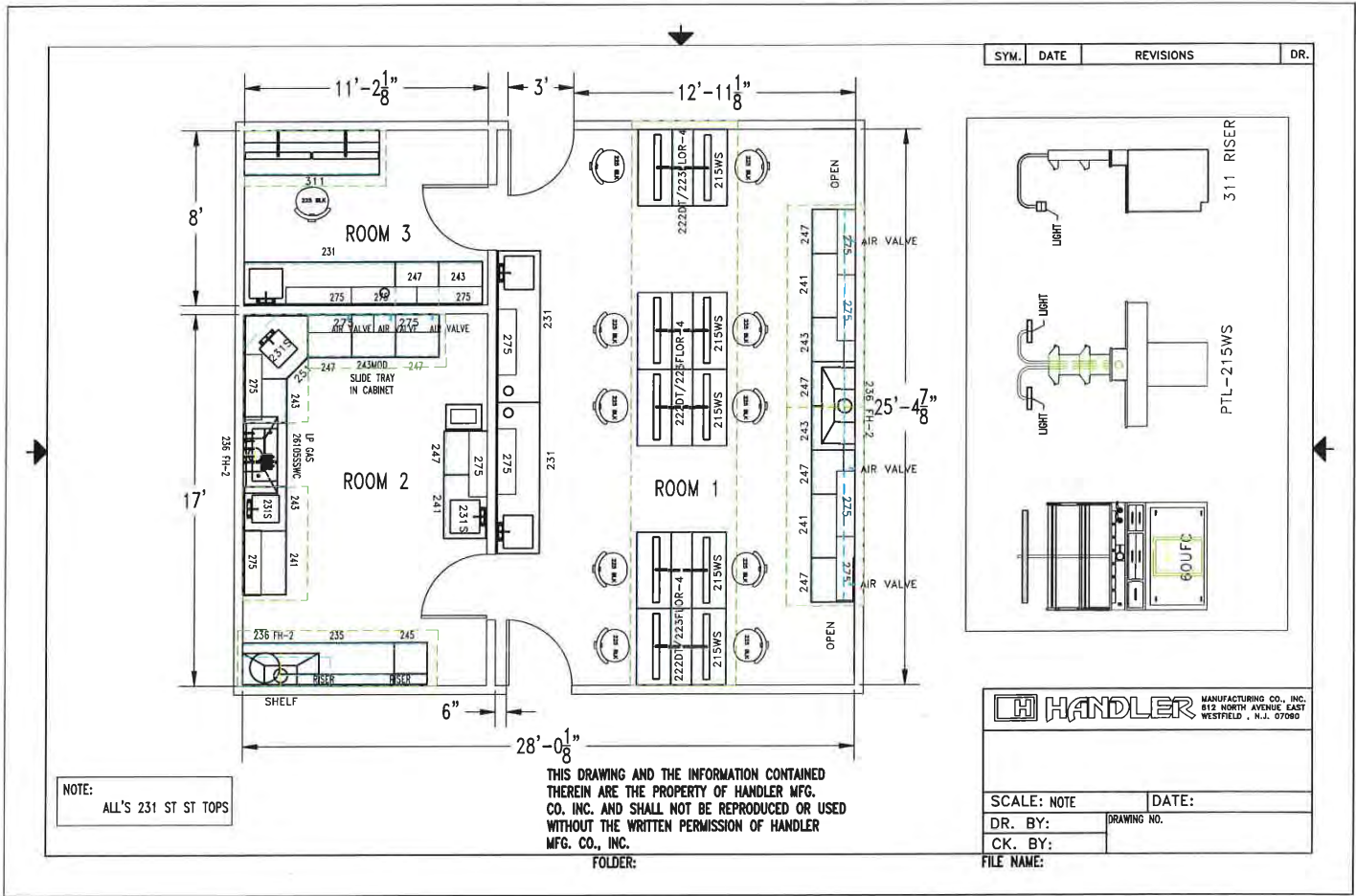


PLAN VIEW

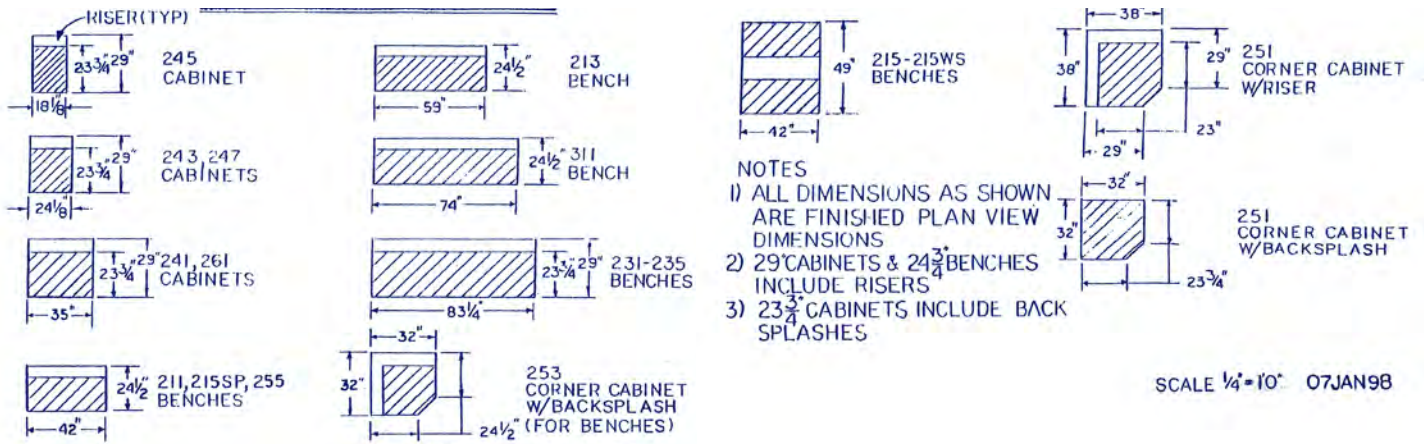
ELEVATION VIEW >



Laboratory Layout Examples



^ FULL SERVICE LAB



HANDLER



P.O. Box 520 • 612 North Ave. East • Westfield, N.J. • 07090-0520
Tel: (908) 233-7796 • Fax: (908) 233-7340
E-Mail: HANDENT@aol.com • Website: HANDLERMFG.com

Dear Laboratory Owner:

Thank you for contacting Handler Manufacturing Company, Inc. We appreciate the opportunity to assist you in your planned expansion or renovation of your dental laboratory.

This Laboratory Planning Kit contains useful information that will provide assistance to you in considering the functional and esthetic design of your laboratory.

Enclosed you will find reduced copies of blueprints illustrating some of the laboratory installations which have been previously designed. We have endeavored to show differentiation not only in size, but also in utilization of the areas available.

The enclosed sheet of graph paper, as well as the templates which are drawn to a 1/4" = 1 foot scale, may be useful to you in considering different layouts for the furniture you are contemplating. Of course, we hope to be able to provide you with our expert assistance in this regard.

Handler Manufacturing Company, Inc. is pleased to offer Laboratory Furniture Layouts, as well as Dust Collection System Layouts, at no charge. Please supply us with a sketch noting the location of doors, windows, plumbing, gas etc., specifying the exact dimensions, and also listing for us those functions which will be performed in that area. It will also be useful if we are provided with the number of technicians to be engaged in each area of processing, as well as a supervisor's and/or auxiliary spaces, such as lunch rooms, seminar rooms, etc., which may be required.

Upon receipt of the Preliminary Layout and Proposal from us we look forward to detailed discussions as to your particular requirements, so that all of the possibilities have been examined and properly judged in preparation for order placement.

Handler's stand-up cabinets and technicians' benches are modular in design and made with quality materials. Our advanced design allows for flexibility in completion, as well as ease of installation, thereby requiring a minimum of professional assistance. However, should you wish to obtain a quotation for site installation, we will be more than happy to provide that to you.

Our five standard colors are, Colonial White, White River, Sky Blue, Designer Beige and Warm Gray. Samples of these colors are readily available upon request. However, a custom color of your choice may be matched at an additional one-time matching charge. In this case, we would ask you to provide to us a sample of the color, minimum 3" x 5", so that we can accurately match the tone, texture and gloss of the sample.

Handler Manufacturing looks forward to assisting you in any way possible. Should you have questions at any time, please feel free to contact us on our toll free number, 1-800-274-2635. We appreciate your interest in our company, and our products. We hope that we will be given the opportunity to play an intricate part in the design of your new laboratory facility.

HANDLER MFG. CO., INC.



Manufacturing, Jewellers & Silversmiths of America



DENTAL MANUFACTURERS OF AMERICA



Fabricators & Manufacturers' Association, International

Resistop®

Resistop is a high pressure solid phenolic resin composite designed for laboratory work surfaces, fume hood decks, fume hood liner panels, pegboards (drying racks), reagent racks, commercial counter tops, cabinet drawer fronts, lock doors and shelving. Resistop provides chemical and stain resistance combined with superior physical characteristics.

Black Resistop is a composite consisting of multiple layer of selected papers impregnated with special phenolic resins, manufactured under heat and pressure to form a solid black chemical resistant composite throughout the entire thickness of the panel.

Resistop is:

1. Non-asbestos
2. Finished two sides, one textured, one smooth
3. Solid phenolic throughout
4. Corrosion and stain resistant
5. Non-porous
6. Durable and strong
7. Cost effective

8. A non-conductor
9. High impact and shock resistant

Special colors are available at additional cost.

Installation

Prior to installing Resistop, cabinetry must be level and secure. To secure counters to cabinets and provide liquid proof butt joints, a two part epoxy or silicone can be used.

Care and Maintenance

Resistop surfaces should be cleaned with warm water, soap, and/or with liquid glass polish. Rinse with clean water and wipe dry with a clean cloth. The use of steel wool and all abrasive cleansers should be avoided.

Specification and Information

Resistop products are generally specified in section 11600, or 12345 of most equipment specifications.

Laboratory Profile Sheet

HANDLER MFG. www.handlermfg.com – 800-274-2635

Fill in Your Company Information:	
Contact Name & Title:	
Laboratory:	
Telephone:	
Fax:	
Address:	
City/State/Zip:	
Country:	
Tell Us About Your Staff...	
Number of technicians employed:	Number of technicians of which the lab is to equipped for:
Is there a separate office area for shipping?	Number of current office workers:
Number of office workers for which the lab is to be planned for?	Please note any additional office requirements (computers, shade room, conference area, private offices, etc.):

In the function column put the letter "Y" if a procedure is performed in your lab.
In the number column put the correct count of technicians for each department.

Function (Y/N)	Number (Future/Present)	Function (Y/N)	Number (Future/Present)
Shipping & Receiving Dept.		Partial Denture Dept.	
Infection Control		Model	
Crown and Bridge Dept.		Waxing	
Plaster		Investing	
Waxing		Casting	
Investing		Finishing	
Casting		Polishing	
Finishing		Set-Up	
Polishing		Other	
Porcelain		Attachment & Implant Dept	
Other		Surveying	
Orthodontic Dept.		Waxing	
Plaster		Other	
Set-Up		Denture Dept.	
Acrylic		Plaster	
Finishing		Waxing & Set-up	
Other		Boilout & Curing Area	
		Acrylic Packing	
		Finishing	
		Other	

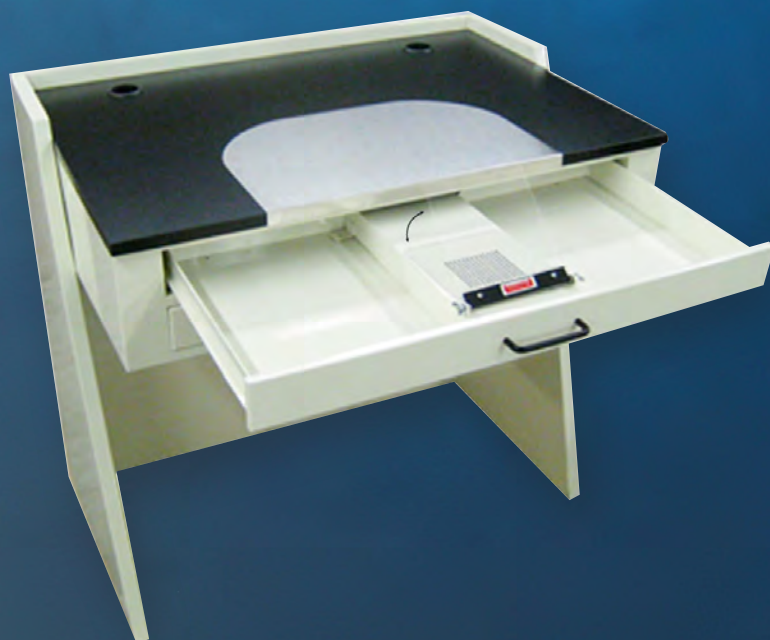
PTL-241 CAD/CAM MILLING PLATFORM SCALABLE, SOLID AND SAFE MILLING WORK STATION

- Leg levelers provide excellent stability & no vibration on uneven floors.
- 18" single door cabinet for dust collector, small compressor or PC tower.
- Four drawers with locks to securely store expensive inventory of pucks, blocks, burs & tools.
- Different locks can be used for each drawer upon request.
- Drawer inserts to efficiently store and organize inventory of supplies.
- 38" wide work surface with ample space for a milling machine, computer monitor and keyboard. 2" cable drop cut out on work surface.
- Esthetically pleasing neutral colors of Colonial White and Designer Beige.
- Unit dimension is 38" W x 27" D x 36 3/4" H
- Can customize to fit any space.



PTL-231 PETITE PLASTER BENCH

- Sturdy steel construction with Leg levelers
- Durable oven-cured powder coated finish
- Light weight – 35"W x 24"D work surface
- Resistop® sink and drain with Gooseneck lab faucet
- Optional in drawer plaster bin liner
- Optional kick plate hands free water activation
- Resistop© work surface
- Compact space design
- No assembly – easy install
- Affordable price
- Shipping weight: 185lbs
- Dimensions: 35" W x 36" H x 24" D



PTL-211 COMPACT WORK STATION

Shipping weight: 185lbs
Dimensions: 35" W x 36" H x 24" D

